

## How do I pay for CCS Services?

Since CCS is a Medicaid-funded program, consumers typically do not have a co-pay. You can also choose to pay for your services out of pocket if you do not have Medicaid.

Please bring your insurance cards to your assessment.

You can ask for Rock County's Payment Policy for more information about self-pay costs.

### 24 HOUR CRISIS INTERVENTION SERVICES

**(608)757-5025**



Available any time of day or night to provide mental health support, assessment, and referrals.

## Rock County Human Services Department Behavioral Health Division

### Mission

To deliver high-quality behavioral health services, in partnership with individuals and families, to promote recovery and improve quality of life.

### Vision

To create and sustain a welcoming system of high-quality care that is focused on respect for the dignity of each person served and the authentic belief in and hope for recovery.

### Core Values

Respecting the dignity of the people we serve.

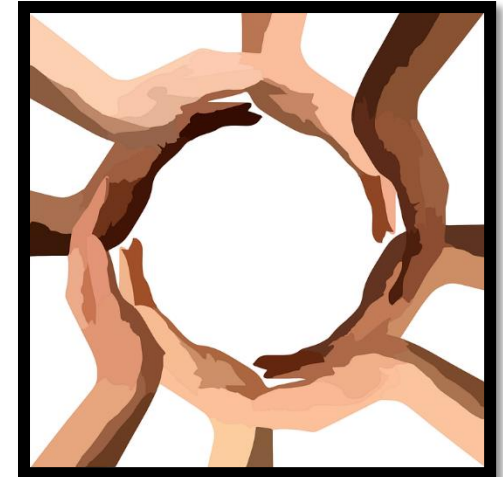
Strengths-based approaches

Instilling hope for our clients

Clients' rights to choose their own goals and priorities

Efficient use of resources

## Comprehensive Community Services (CCS) Program



*A community-based mental health and substance abuse rehabilitation program for children and adults.*



Rock County Human Services  
1900 Center Ave., Suite S1  
Janesville, WI 53546  
(608)741-3500

<http://www.co.rock.wi.us/hsd-bh/programs/ccs>

## Who is eligible for CCS?

Comprehensive Community Services is available to children and adults who meet the following criteria:

- *You must be a Rock County resident.*
- *You must have a mental health or substance abuse diagnosis.*
- *You must be determined to need psychosocial rehabilitation services per a state screen.*

## Guiding Principles:

People have a voice in decisions that affect them and their path of recovery.

Participants' support plan will reflect their needs, abilities, talents and resiliencies.

Support in recovery is accomplished in a community setting.

Together, consumers and providers develop recovery goals.

Each person's values, beliefs, customs and culture will be acknowledged and respected.

Consumers have a choice in who will be on their Recovery Team.

## What services does CCS provide?

Service Facilitation  
Psychotherapy  
Psychosocial Rehabilitation  
Assessments/Specialized Assessments  
Peer Support  
Recovery Education and Illness Management  
Medication Management  
Substance Abuse Counseling



## What can you expect?

The first step is completing an application. Then, a staff person will meet with you to explain the program and begin the assessment. CCS is a voluntary program, so you get to decide if you want to participate. The staff person will help you complete the assessment, develop a Recovery Team, and create a Recovery Plan. Your Recovery Team will include a Service Facilitator and a Mental Health Therapist. You can include anyone else on the team who will support your recovery.

## The Road to Recovery



Every six months, you will develop a Recovery Plan, also known as a Treatment or Service Plan. These plans will include your goals and will explain how the people on your Recovery Team can help you to meet these goals.

The plan will also include what you can do to help yourself meet your goals and move forward on your path to recovery.

Your Recovery Plan is also used as documentation for Medicaid, so your services can be reimbursed.



## How can I apply for CCS?

Anyone can apply by contacting the Rock County Behavioral Health Intake Line at:

**(608)757-5229**