

U.S. PUBLIC LAND SURVEY MONUMENT RECORD

For Public Land Survey Corners In:

WI ADMINISTRATIVE CODE A-E 7.08 REQUIREMENT

T. 3 N. R. 9 E. 4th P.M.

REV 10/23/2004

USMONREC.DWG

CORNER CODE INDEX

1	2	3	4	5	6	7	8	9	10	11	12	13	14	15	16	17	18	19	20	21	22	23	24	25	
A																									A
B																									B
C	6					5					4				3					2			1	C	
D																									D
E																									E
F																									F
G	7					8					9				10					11			12	G	
H																									H
J																									J
K	18					17					16				15					14			13	K	
L																									L
M																									M
N																									N
O																									O
P	19					20					21				22					23			24	P	
Q																									Q
R																									R
S																									S
T	30					29					28				27					26			25	T	
U																									U
V																									V
W																									W
X	31					32					33				34					35			36	X	
Y																									Y
Z																									Z

ALBANY TWP

~~ROCK COUNTY WI~~

GREEN IF AVAILABLE

ROCK COUNTY COORDINATES PREFERRED

North _____ Elev. _____

East _____

Hor. Datum _____ Vert. Datum _____

LATITUDE _____ ELLIPS. HT. _____

LONGITUDE _____

NAD83(91) _____ NETWORK ADJ. YR 2010

GPS (X) _____ TRAVERSE (X) X

BASED ON THE FOLLOWING CONTROL:

PLACE MONUMENT SYMBOL AT PROPER LOCATION ON ABOVE INDEX

CORNER MONUMENT

WITNESS MONUMENT

BEARINGS ARE BASED ON: ROCK COUNTY PROJECTION

SE COR SEC 1
T 3 N R 9 E

ALSO
NE 1/2 T 3 N R 9 E

FILE IN MAGNOLIA TWP

FIELD BOOK _____ PAGE # _____

OR OBSERVATION SHEET _____

SHEET 1 OF 3

SHOW A PLAN VIEW DRAWING DEPICTING THE CORNER MONUMENT AND SURROUNDING PHYSICAL FEATURES, INCLUDING THE EXCAVATION AREA AND DEPTH.

PLANNING & ZONING COMMITTEE ADOPTED THIS FORM ON 12/2/1982

CORNER CODE A/B-1

UN5533 NECORSEC 12 T3NR9E

(B) Describe any record evidence, monument evidence, occupational evidence, testimonial evidence or any other material evidence you considered, and whether the monument was found or placed.

- 1833 BRINK SEP 11 EAST BOUNDARY T3N R9E NORTH ON EAST SIDE SEC 12
- 528.00 WESTERN POINT OF A SAND STONE LEDGE
 - 990.00 DESCENT TO CREEK BOTTOMS
 - 1716.00 RAPID STREAM 16.5' CROSS WEST
 - 2508.00 LEAVE BOTTOM LAND
 - 2640.00 SET 1/4 SECTION POST BURR OAK 16 S41W 66.00' BUR OAK 16 N42W 45.54'
 - 3468.96 W. OAK 14
 - 5280.00 SET POST CORNER SECTIONS 1 & 12 W OAK 14 S26W 21.78' W. OAK 15 N1W 40.92' LAND ROLLING, SECOND RATE BLACK & BURR OAK, & ?/
- 1833 BRINK SEP 11 NORTH ON EAST SIDE SECTION 1
- 2640.00 ENTER PRAIRIE
 - 1676.40 A SMALL SPRING RUNNING EAST
 - 2640.00 SET 1/4 SECTION POST IN PRAIRIE AND MADE A MOUND & C?
 - 5280.00 INTERSECTED SOUTH BOUNDARY OF T4 AS RUN OUT FROM SUGAR CREEK. SET POST FOR CORNER TO TOWNSHIPS 3 & 4 NORTH, RANGE 9 EAST IN PRAIRIE AND MADE A MOUND, & C? LAND ROLLING SECOND RATE PRAIRIE HAZEL GRASS & ? LAND ROLLING SECOND RATE PRAIRIE HALE GRASS, & C. SEPTEMBER 11TH 1833
- 1833 BRINK (SEP 12) WEST ON SOUTH SIDE OF SECTION 31 T5N R10E
- 249.48 W OAK 14
 - 2640.00 SET QUARTER POST BURR OAK 7 N43E 55.44'; BURR OAK 6 N70W 65.34'
 - 5732.76 INTERSECTED RANGE LINE 924' NORTH OF CORNER TO SECTIONS 1 & 12. SET POST AT INTERSECTION FOR CORNER TO T3 & 4N R10E. W. OAK 16 N61E 15.18', W. OAK 18 S8E 75.9' LAND ROLLING SECOND RATE BURR OAK W. OAK HICKORY & HAZLE ???? SEP 12TH 1833
- 1833 HARRISON (DEC 9) SE COR SEC 1 T3N R9E EAST ON RAND. BET 1 & 12
- 1848.00 LEAVE TIMBER & ENTER MARSH
 - 2574.00 LEAVE MARSH & ENTER TIMBER
 - 2640.00 TEMPY 1/4 SEC CORNER
 - 5254.92 INT. E. BDY 237.60 NORTH OF P. LAND LEVEL 2ND RATE TIMBER BURR W.O. & RED OAK. ??? GRASS & WEEDS.
 - WEST COR. BET. SECS 1 & 12
 - 2627.46 QUARTER SEC. CORNER. {BURR O. 16 N20E 26.4' BURR OAK 13 S83E 36.96 BURR O 16, BURR O 13} MARKED
 - 5254.92 SEC COR.
- 1833 BRINK SOUTH BOUNDARY OF T5N R10E WEST ON SOUTH SIDE SECTION 31
- 186.12 BURR OAK 14
 - 2640.00 SET QUARTER SECTION POST BURR OAK 12 N83E 144.54'; BURR OAK 16 N43 1/2W 49.5'
 - 2962.08 W. OAK 16

SEAL
L. H. Barnes
Emboss
Sep 21, 2011

SHEET 1 OF 3

CORNER CODE A/B-1

UN5533 NECORSEC 12 T3NR9E

5602.08 INTERSECTED RANGE LINE 957.00' NORTH OF
CORNER SECTIONS 1 & 12 T4N R9E SET POST
AT INTERSECTION FOR CORNER TO T4 & 5N R10E
BURR OAK 12 N34E 5.28'; BURR OAK 16 S65E
81.84' LAND & C SAME.

1978 TALARCZK #2724 @ SE COR SEC 1 T3N R9E CAST ALUM.
MON. CORNER SET BY PROPORTIONATE MEASUREMENT &
EXISTING PHYSICAL EVIDENCE. REFERENCED SAME. 3'
SOUTH OF E/W CENTER PVMT.

1978 BARNES VOL 5 PG 459 @ SW COR SEC 31 UNION TWP SET
ALUM. MON. FD PK & 2.3' DEEP FD CUT LIMESTONE.
SOUTHERLY 929.18 TO FD ALUM @ NE COR SEC 12. 959
SOUTH OF NW COR SEC 6 T3N R10E DUG A 3' DEEP & 25'
WIDE HOLE SOUTHERLY 6" AT THE CENTER OF THE ROAD AND
FOUND NOTHING. ANGLE @ NE COR SEC 12 FROM NW COR
SEC 6 TO W 1/4 COR SEC 6 IS 179-58-17. SW COR SEC 31 TO
W 1/4 COR SEC 6 IS 2194.49

USED MY 1978 OBSERVATIONS TO COMPUTE POSITION OF SE COR
SEC 1, T3N R9E, WHICH IS IN HARMONY WITH TWO REFERENCE TIES.
TO THE SE 1/2 BENT 1 1/2 REROD TO THE SW AND 1 1/2 REROD
LAYING ON TOP OF THE GROUND. THERE IS NO RECORD OF THIS
REROD.

C) Was the corner restored through acceptance of (1) an obliterated evidence location, or, (2) a found perpetuated location?

TALARCZK DID NOT EXCAVATION FOR EVIDENCE. I DID NOT ACCEPT
NOR REJECT HIS MONUMENT.

D) Describe any material discrepancy between the location of the corner as restored or reestablished and the location of that corner as previously restored or reestablished by distance and direction. Show the discrepancy on the plan view drawing under (a), above. Show the distances between the corner as previously restored or reestablished and (1) the corner as restored or reestablished, and (2) to at least 4 of the witness monuments shown on the drawing in (a), above.

(E) Was the corner reestablished through lost corner proportionate methods? If so, show the method, including the directions and distances to other public land survey corners used as evidence or used for proportioning the corner location.

I, **Donald Barnes**, hereby certify that the corner location as identified by the corner code index was determined by me under my direction and control and that this U.S. Public Land Survey Monument Record is correct and complete to the best of my knowledge and belief.

 **Donald Barnes**
SEAL
Emboss

SHEET 2 OF 3

Sep 21, 2011

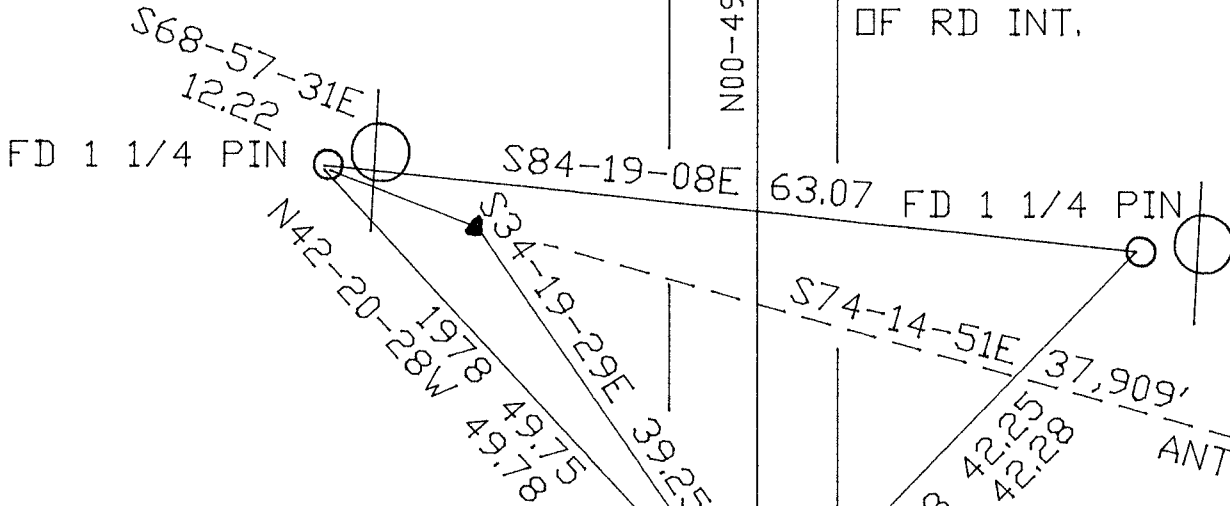
CORNER CODE A/B-1

A.E. 7.08 REQUIREMENT

SW COR
SEC 31
UNION TWP
FD ALUM
N00-49-32W 929.14

1978 TALARCZK MAP #2724
OBSERVATION SHEET #337
#337 IS DURA
NAIL; NW EDGE
OF RD INT.

1978 BARNES
VOL 5 PG 459
FD ALUM



ENGLISH
SETTLEMENT
RD

SEC 6
MAGNOLIA TWP
T3N R9E

DID NOT
LOCATE

STH 104

FD 1 1/4 PIN
LAYING ON TOP
OF GROUND

FD BENT 1 1/4
PIN

SE COR
SEC 1
T3N R9E
ALBANY TWP

SHEET 3 OF 3

A/B 1

Donald Barnes
EMBOSSSED
SEAL

Sep 21, 2011