

U.S.

# PUBLIC LAND SURVEY MONUMENT RECORD

For Public Land Survey Corners in:

WI ADMINISTRATIVE CODE A-E 7.08 REQUIREMENT

T. 1 N., R. 13 E

### CORNER CODE INDEX

	1	2	3	4	5	6	7	8	9	10	11	12	13	14	15	16	17	18	19	20	21	22	23	24	25
A																									
B																									
C	6																								
D																									
E																									
F																									
G	7																								
H																									
I																									
J																									
K	18																								
L																									
M																									
N																									
O																									
P	19																								
Q																									
R																									
S																									
T	30																								
U																									
V																									
W																									
X	31																								
Y																									
Z																									

TURTLE TWP  
ROCK COUNTY WI

IF AVAILABLE  
ROCK COUNTY COORDINATES PREFERRED

North \_\_\_\_\_ Elev. \_\_\_\_\_

East \_\_\_\_\_

Hor. Datum \_\_\_\_\_ Vert. Datum \_\_\_\_\_

LATITUDE \_\_\_\_\_ ELLIPS. HT. \_\_\_\_\_

LONGITUDE \_\_\_\_\_

GPS (X) \_\_\_\_\_ TRAVERSE (X) \_\_\_\_\_

BASED ON THE FOLLOWING CONTROL:

PLACE MONUMENT SYMBOL  AT PROPER LOCATION ON ABOVE INDEX

CORNER MONUMENT

WITNESS MONUMENT

(a)

BEARINGS ARE BASED ON: \_\_\_\_\_

FIELD BOOK \_\_\_\_\_ PAGE # \_\_\_\_\_

SHEET \_\_\_\_\_ OF \_\_\_\_\_

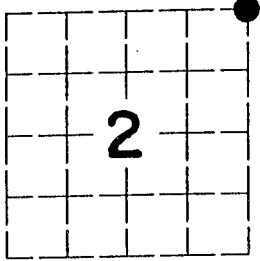
SHOW A PLAN VIEW DRAWING DEPICTING THE CORNER MONUMENT AND SURROUNDING PHYSICAL FEATURES, INCLUDING THE EXCAVATION AREA AND DEPTH.

PLANNING & ZONING COMMITTEE ADOPTED THE ABOVE FORM ON 12/2/1982

CORNER CODE 211/12(1)

**"MONUMENT RECORD"**

OF  
 LAND SURVEY MONUMENTS  
 SITUATED IN SECTION 2  
 TOWNSHIP 46 NORTH  
 RANGE 2 EAST, THIRD P.M.  
WINNEBAGO COUNTY, IL



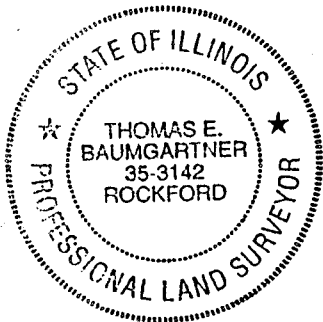
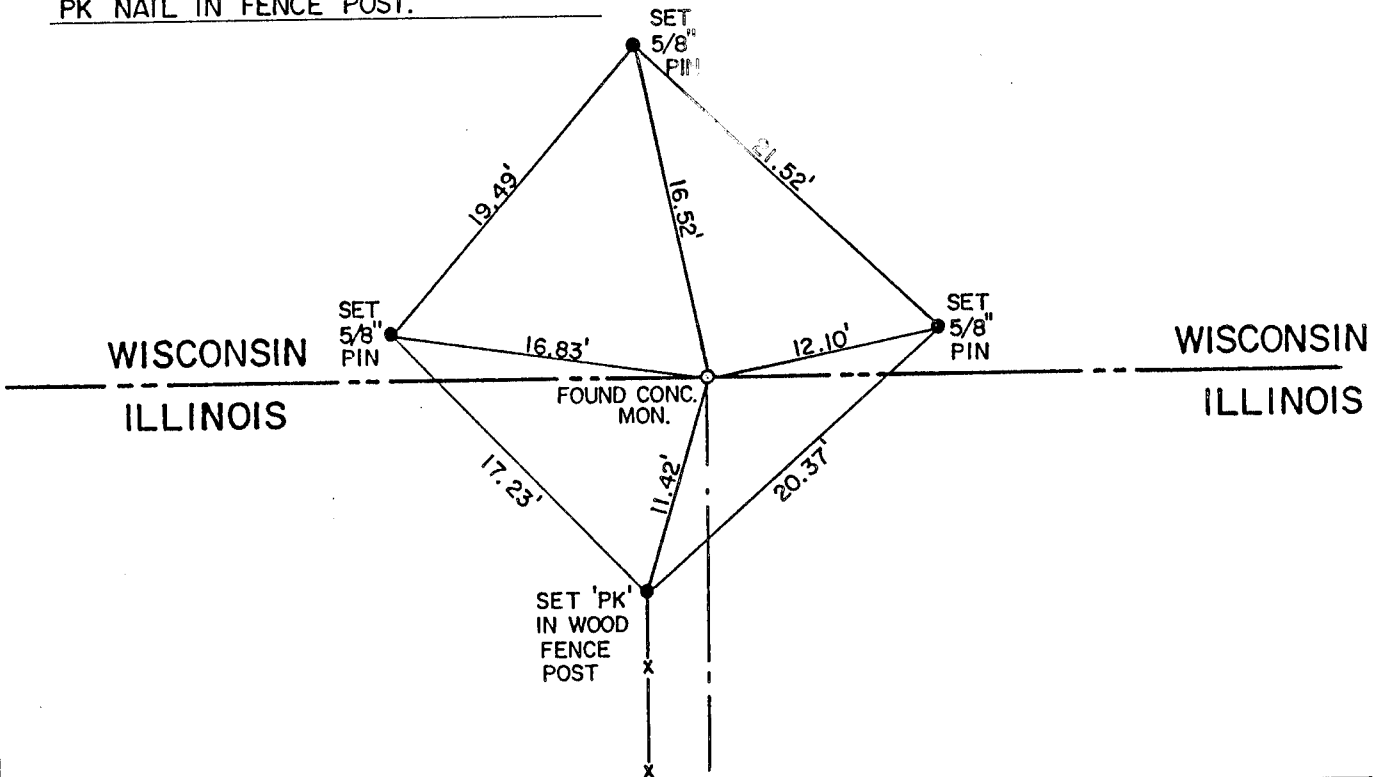
This space for Recorder's use only

MONUMENT DESCRIPTION AND REMARKS:

RECORDED TO BE DRAWN  
 (NOT TO SCALE)

30111

FND. CONC. MON., S.(3) 5/8" I. PINS, SET ROW 288 S.  
 'PK' NAIL IN FENCE POST.



STATE OF ILLINOIS } SS  
 COUNTY OF WINNEBAGO  
 I, THOMAS E. BAUMGARTNER HEREBY  
 CERTIFY THAT THIS DOCUMENT WAS PREPARED  
 UNDER MY DIRECTION IN ACCORDANCE WITH  
 THE PUBLIC ACT 765 ILCS 220 AND THE ABOVE  
 DATA IS GIVEN UNDER MY HAND AND SEAL THIS  
26th DAY OF July, 1996 A.D.

*Thomas E. Baumgartner*

ILLINOIS PROFESSIONAL  
 LAND SURVEYOR NO. 3142

SHEET 1 OF 4

*2 11/12 (1)*