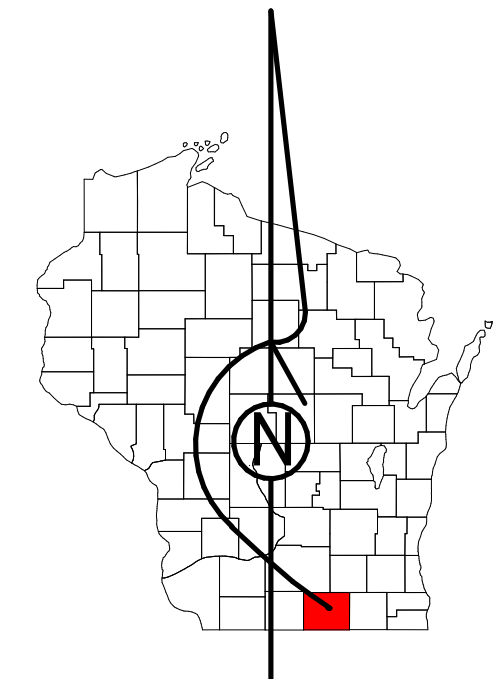


Property Division Map

City
of
Edgerton

T. 4 N. - R. 12 E.
Section 02 SW



STATE OF WISCONSIN
COUNTY OF ROCK

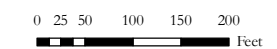
PREPARED BY

**REAL PROPERTY DESCRIPTION
DEPARTMENT**
USING
**ROCK COUNTY
GEOGRAPHIC INFORMATION SYSTEM**

DUPLICATION OF THIS MAP PROHIBITED
WITHOUT THE WRITTEN CONSENT OF THE
REAL PROPERTY DESCRIPTION DEPARTMENT.

THIS MAP WAS PREPARED PURSUANT
TO SECTION 70.09 WIS. STATS.
USING PUBLIC RECORDS. IT IS NOT INTENDED
TO BE A SUBSTITUTE FOR AN
ACTUAL FIELD SURVEY
AND IS ADVISORY ONLY.

DISTANCES SHOWN ON THIS
MAP WERE PRODUCED BY
THE GIS SYSTEM AND ARE
FOR REFERENCE ONLY.
SEE DOCUMENT OF RECORD
FOR ACTUAL DISTANCE.



- | | | | |
|--|----------------|--|--------------|
| | Gap | | dam |
| | Overlap | | easement |
| | Town of Fulton | | hydro |
| | CSM | | lots |
| | CSMHYDRO | | parcels |
| | CSMLOT | | parcelshydro |
| | CSMLOTHYDRO | | roadw |
| | MFL | | |

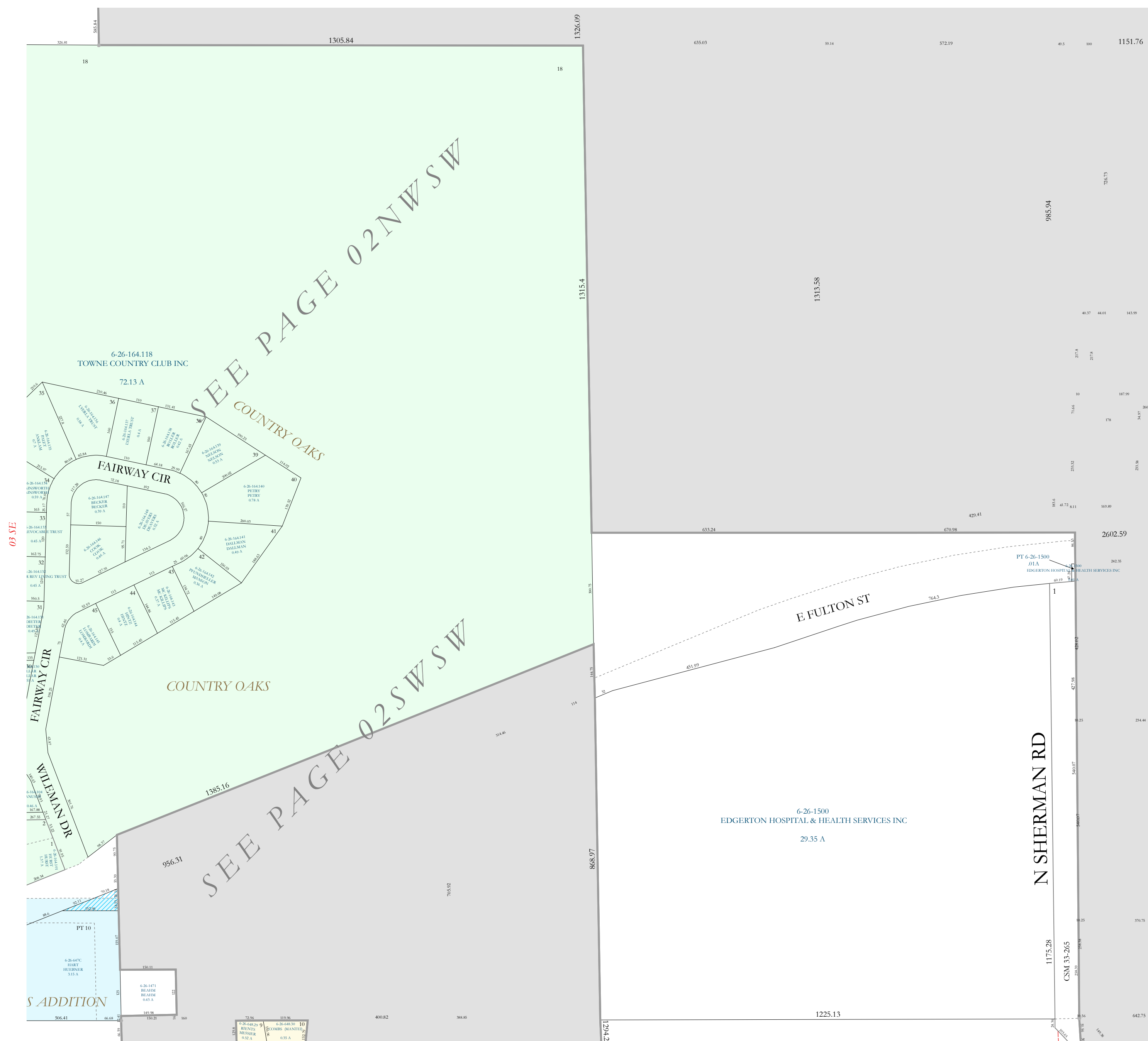
See Pages

January 1, 2022

02 SW

02 NW

11 NW



SEE PAGE 02NWSW

SEE PAGE 02SWSW

03 SE

Town of Fulton