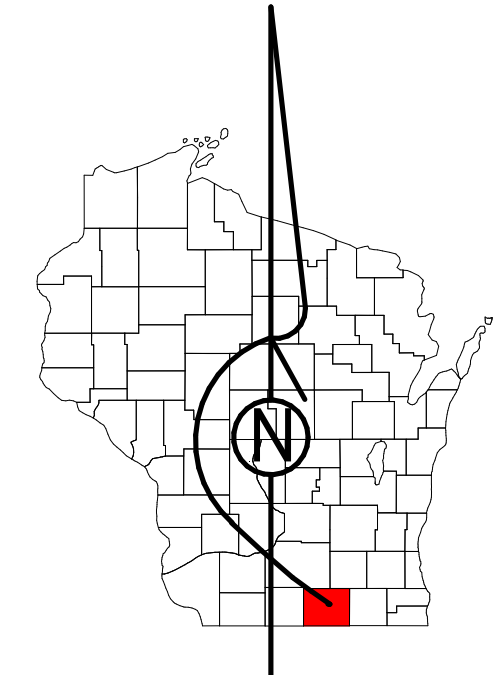


Property Division Map

City
of
Edgerton

T. 4 N. - R. 12 E.
Section 04 SW



STATE OF WISCONSIN
COUNTY OF ROCK

PREPARED BY

REAL PROPERTY DESCRIPTION
DEPARTMENT
USING
ROCK COUNTY
GEOGRAPHIC INFORMATION SYSTEM

DUPLICATION OF THIS MAP PROHIBITED
WITHOUT THE WRITTEN CONSENT OF THE
REAL PROPERTY DESCRIPTION DEPARTMENT.

THIS MAP WAS PREPARED PURSUANT
TO SECTION 7609 WIS. STATS.
USING PUBLIC RECORDS. IT IS NOT INTENDED
TO BE A SUBSTITUTE FOR AN
ACTUAL FIELD SURVEY
AND IS ADVISORY ONLY.

DISTANCES SHOWN ON THIS
MAP WERE PRODUCED BY
THE GIS SYSTEM AND ARE
FOR REFERENCE ONLY.
SEE DOCUMENT OF RECORD
FOR ACTUAL DISTANCE.

0 25 50 100 150 200
Feet

- Gap
- Overlap
- Town of Fulton
- CSM
- CSMHYDRO
- CSMLOT
- CSMLOTTHYDRO
- MFL
- dam
- casement
- hydro
- lots
- parcels
- parcelshydro
- roadrw

See Pages

January 1, 2022

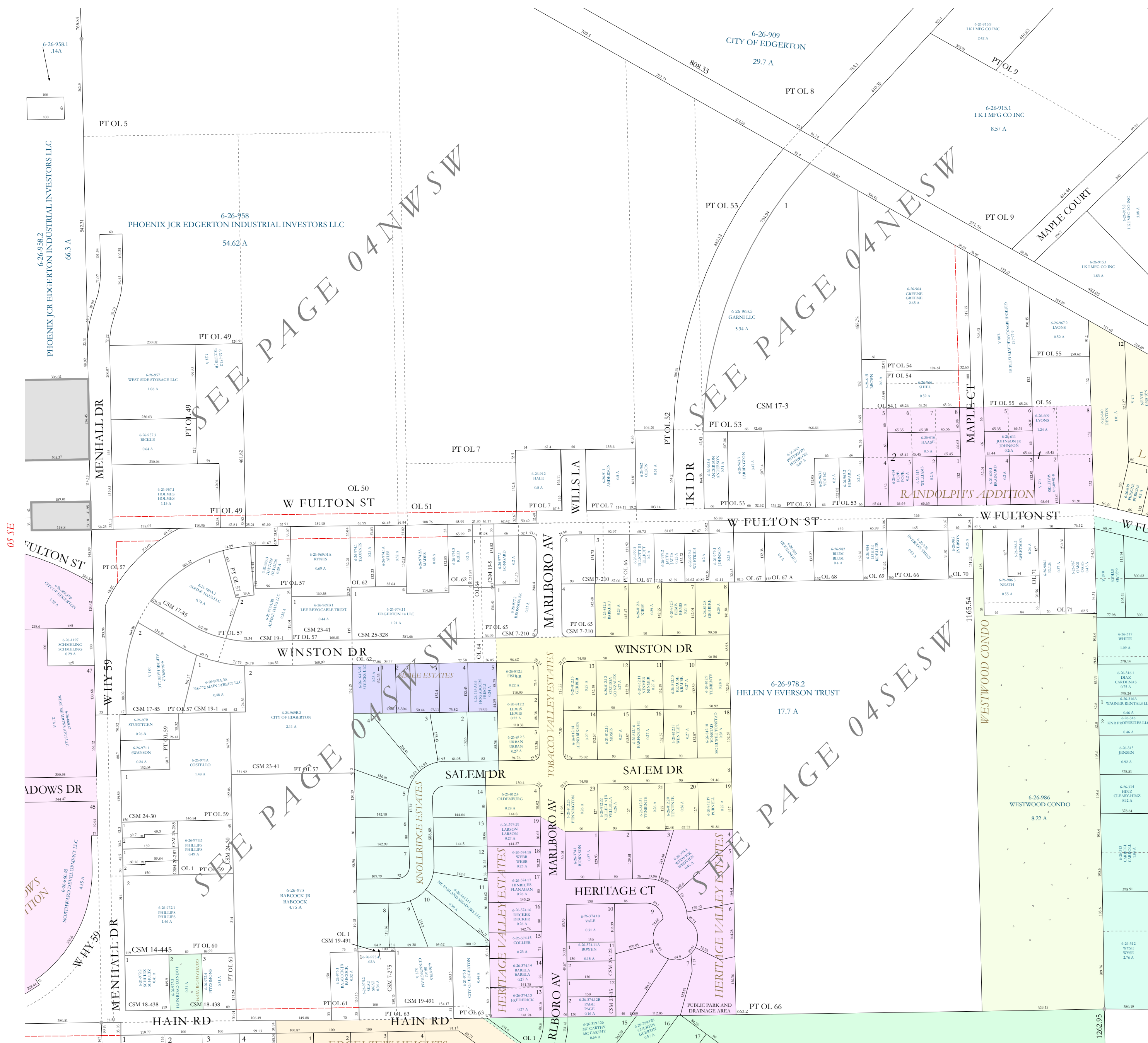
04 SW

04 NW

09 NW

04 SE

05 SE



SEE PAGE 04 NWSW

SEE PAGE 04 SWSW

SEE PAGE 04 SESW