

U.S. PUBLIC LAND SURVEY MONUMENT RECORD

For Public Land Survey Corners in:

WI ADMINISTRATIVE CODE A-E 7.08 REQUIREMENT

T. 3 N., R. 10 E

CORNER CODE INDEX

A	1	2	3	4	5	6	7	8	9	10	11	12	13	14	15	16	17	18	19	20	21	22	23	24	25
B																									
C																									
D																									
E																									
F																									
G																									
H																									
I																									
J																									
K																									
L																									
M																									
N																									
O																									
P																									
Q																									
R																									
S																									
T																									
U																									
V																									
W																									
X																									
Y																									
Z																									

MA GNOLIA TWP
ROCK COUNTY WI

IF AVAILABLE
ROCK COUNTY COORDINATES PREFERRED

North _____ Elev. _____

East _____

Hor. Datum _____ Vert. Datum _____

LATITUDE _____ ELLIPS. HT. _____

LONGITUDE _____

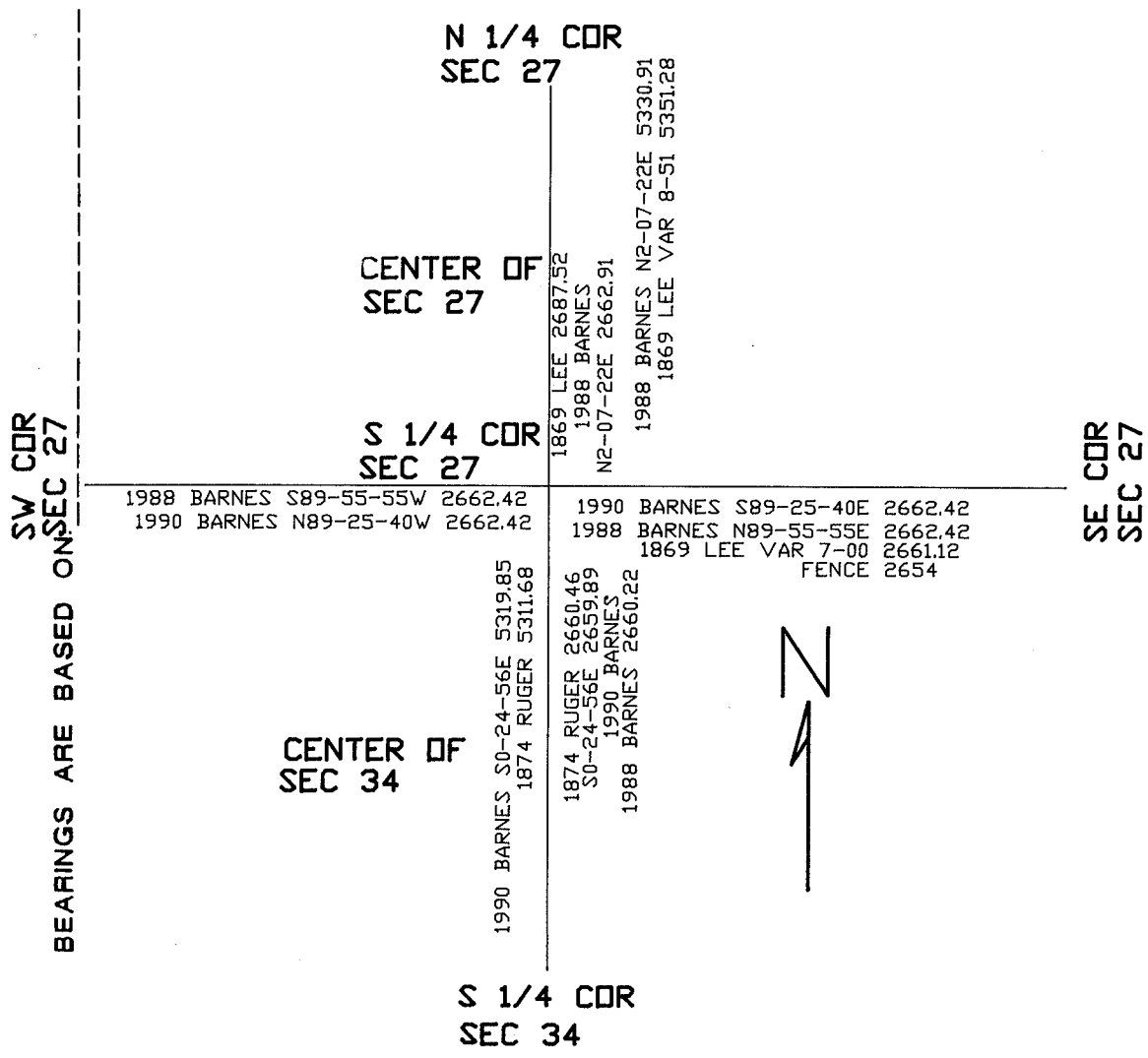
GPS (X) _____ TRAVERSE (X) _____

BASED ON THE FOLLOWING CONTROL:

PLACE MONUMENT SYMBOL \blacklozenge AT PROPER LOCATION ON ABOVE INDEX

\blacklozenge CORNER MONUMENT \circ WITNESS MONUMENT

(a)



FIELD BOOK _____ PAGE # _____

SHEET 1 OF 1

SHOW A PLAN VIEW DRAWING DEPICTING THE CORNER MONUMENT AND SURROUNDING PHYSICAL FEATURES, INCLUDING THE EXCAVATION AREA AND DEPTH.

PLANNING & ZONING COMMITTEE ADOPTED THE ABOVE FORM ON 12/2/1982

CORNER CODE V 15

11/12/99

(Please list any record evidence, monument evidence, occupational evidence, testimonial evidence or any other material evidence you considered, and whether the monument was found or placed.)

- 1859 LEE VOL. 1 PG 273 FOUND REMAINS OF MOUND AND PLACE OF OLD STAKE. NEW STAKE & SURROUNDED BY 5 ILL. 2661.42 VAR 7-00 TO SE COR SEC 27, 2687.52 VAR 8-51 TO CENTER OF SEC 27, & 5351.28 TO N 1/4 COR SEC 27.
- 1874 RUGER VOL. 2 PG 134 FOUND CORNER ESTABLISHED BY LEE. 2660.46 TO CENTER OF SIX 34 X 5311.68 TO S 1/4 COR SEC 34.
- 1883 BARNES VOL. 6 PG 391. N89-55-55E 2662.42 TO SW COR SEC 27, S89-35-55W 2662.42 TO SW COR SEC 27, N2-07-22E 2662.91 (LEE 2687.52) TO INT. OF 1/2 LINES IN SEC 27, N2-07-22E 5336.91 (LEE 5351.28) TO N 1/4 COR SEC 27, 2660.23 TO INT. OF 1/2 LINES IN SEC 34. ON LINE & MIDWAY BETWEEN SW & SE CORNERS OF SEC 27. 2683 FROM N/S FENCE NEAR S 1/4 COR SEC 27 TO SE COR SEC 27.
- 1898 BARNES VOL. 6 PG 410. N89-25-40W 2662.42 TO SW COR SEC 27, S89-25-40E 2662.42 TO SE COR SEC 27, S0-24-56E 2689.89 (RUGER 2660.46) TO INT. 1/2 LINES IN SEC 34. S0-24-56E 5319.85 (RUGER 5311.68)

IN THE 1970'S, THE VI DOT RECONSTRUCTED CHL "D". AT THIS LOCATION THERE IS AN EXTREMELY LARGE AMOUNT OF TALL PILE. THE PILE IS TO DEPT TO 100 FOR THE MONUMENT. PLACED THE CORNER MIDWAY AND ON LINE BETWEEN THE SE & SW CORNERS OF SEC 27. THIS IS IN HARMONY WITH RUGER'S DISTANCE TO THE 1/4 QUARTER LINE OF SECTION 34. DID NOT PLACE MONUMENT.

(1) Was the corner reestablished through comparison of (a) an obliterated evidence location, or (b) a former perpetuated location?

No. Describe any material discrepancy between the location of the corner as restored or reestablished and the location of that corner as previously restored or reestablished by distance and direction. Show the discrepancy on the plan sheet drawing under (1) above. Show the distances between the corner as previously restored or reestablished and (a) the corner as restored or reestablished, and (b) to at least 4 of the witnesses mentioned, shown on the drawing in (a) above.

(2) Was the corner reestablished through lost corner proportionate methods? If so, show the method, including the directions and distances to other public land survey corners used as evidence or used for proportioning the corner location.

I, Donald Barnes, hereby certify that the corner location as identified by the corner code index was determined by me under my direction and control and that this U.S. Public Land Survey Monument Record is correct and complete to the best of my knowledge and belief.

Signature

Donald Barnes

Number of included sheets 1

Date

11/12/1999

CORNER CODE V-15