

U.S. PUBLIC LAND SURVEY MONUMENT RECORD

For Public Land Survey Corners in:

WI ADMINISTRATIVE CODE A-E 7.08 REQUIREMENT

T. 3 N., R. 10 E

CORNER CODE INDEX

	1	2	3	4	5	6	7	8	9	10	11	12	13	14	15	16	17	18	19	20	21	22	23	24	25
A																									
B																									
C																									
D																									
E																									
F																									
G																									
H																									
I																									
J																									
K																									
L																									
M																									
N																									
O																									
P																									
Q																									
R																									
S																									
T																									
U																									
V																									
W																									
X																									
Y																									
Z																									

MAGNOLIA TWP
ROCK COUNTY WI

IF AVAILABLE
ROCK COUNTY COORDINATES PREFERRED

North _____ Elev. _____

East _____

Hor. Datum _____ Vert. Datum _____

LATITUDE _____ ELLIPS. HT. _____

LONGITUDE _____

GPS (X) _____ TRAVERSE (X) _____

BASED ON THE FOLLOWING CONTROL:

PLACE MONUMENT SYMBOL AT PROPER LOCATION ON ABOVE INDEX

CORNER MONUMENT

WITNESS MONUMENT

(a)

BEARINGS ARE BASED ON:

FIELD BOOK _____ PAGE # _____

SHEET 1 OF 2

SHOW A PLAN VIEW DRAWING DEPICTING THE CORNER MONUMENT AND SURROUNDING PHYSICAL FEATURES, INCLUDING THE EXCAVATION AREA AND DEPTH.

PLANNING & ZONING COMMITTEE ADOPTED THE ABOVE FORM ON 12/2/1982

CORNER CODE V1(1)

MA601

(B) Describe any record evidence, monument evidence, occupational evidence, testimonial evidence or any other material evidence you considered, and whether the monument was found or placed.

1833 MILLER WEST BET. SECS. 30 & 31

730.62 WO 30" IN DIAM.

2640 QUARTER SEC COR. BUR O 18 N28W 17.16', BUR O 12 S41W 66'
BUR O 18 & BUR O 12 MARKED

5334.12 INT W. BDY 1081.08' N OF COR. TO TOWNS 2 & 3 ? OF BDYS 9
& 10. W.O. 14 N82E 33', RED O 12 S50E 46.2'

1859 HIGHWAY RECORDS BOOK 1 PG 22 STATES THAT THE DISTANCE FROM THE SW
CORNER OF SECTION 31 TO THE NE CORNER OF SECTION 1 T2N R9E IS
4438.50. THE MEASURED DISTANCE IS 4134.76.

1873 LEE VOL 2 PG 96 FOUND W.O. B.T. & STUMP OF RED O B.T. DID NOT
STATE WHAT HE PLACED.

1937 SUNNY VOL 3 PG 344 DUG 5X54 DEEP HOLE & FOUND NOTHING.

1987 BARNES V-1 DID NOT RE-EXCAVATE FOR CORNER. DECLARED CORNER LOST &
PLACED POLY MONUMENT. 1081.08 TO NE CORNER SEC 1 & 1539.76 TO E
1/4 COR SEC 36.

FOUND POLY. MONUMENT & REFERENCED SAME. MONUMENT WILL BE DISTURBED BY
PAVING PROJECT.

C) Was the corner restored through acceptance of (1) an obliterated
evidence location, or, (2) a found perpetuated location?

D) Describe any material discrepancy between the location of the
corner as restored or reestablished and the location of that corner as
previously restored or reestablished by distance and direction. Show
the discrepancy on the plan view drawing under (a), above. Show the
distances between the corner as previously restored or reestablished
and (1) the corner as restored or reestablished, and (2) to at least 4
of the witness monuments shown on the drawing in (a), above.

(E) Was the corner reestablished through lost corner proportionate
methods? If so, show the method, including the directions and
distances to other public land survey corners used as evidence or used
for proportioning the corner location.

I, Donald Barnes, hereby certify that the corner location as identified
by the corner code index was determined by me under by direction and
control and that this U.S. Public Land Survey Monument Record is
correct and complete to the best of my knowledge and belief.

seal

Donald Barnes
emboss

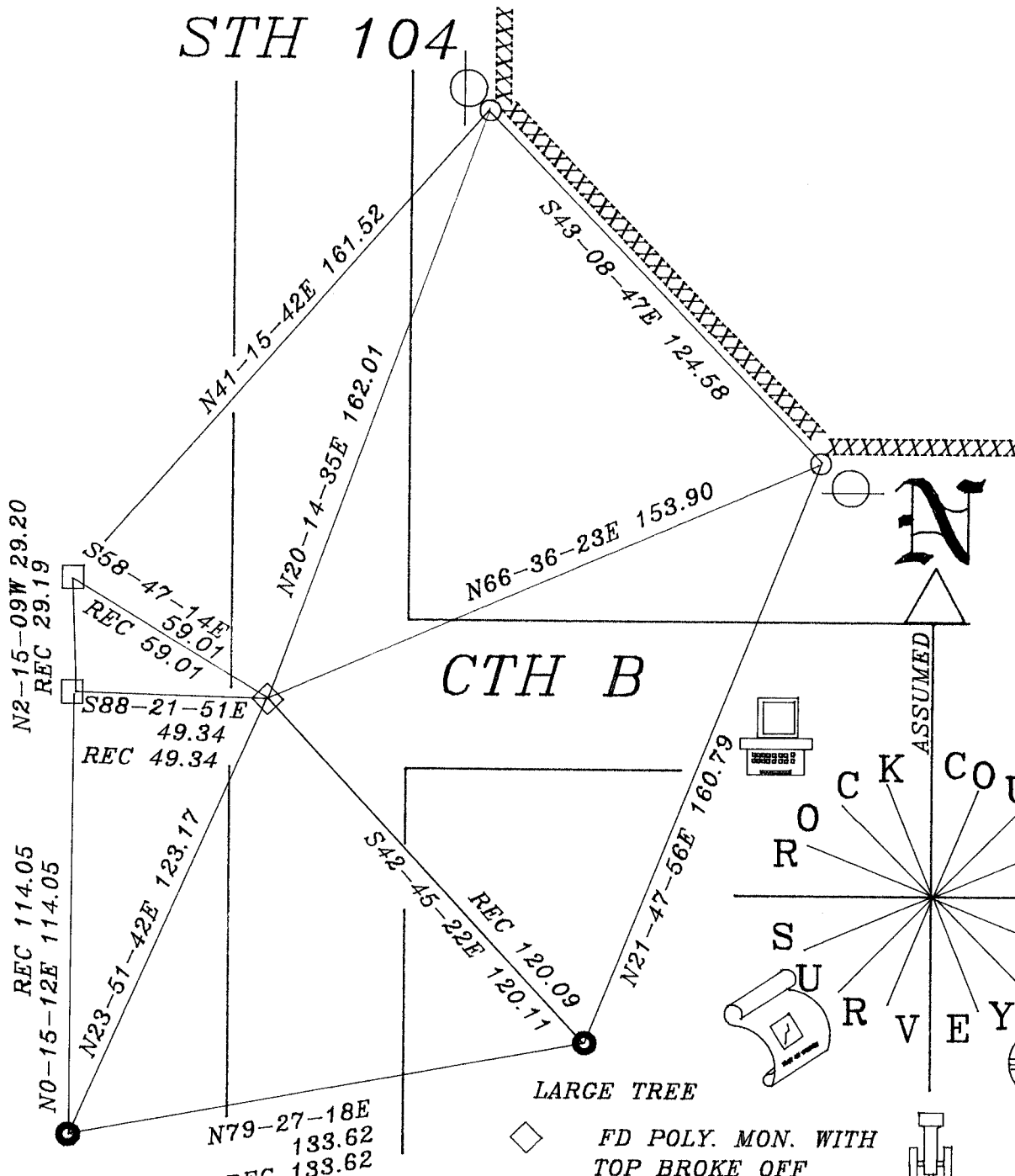
7/25/1996

A-E 7.08 REQUIREMENT

Number of included sheets 1

CORNER CODE

V-1 (1)



- ◆ FD POLY. MON. WITH TOP BROKE OFF
- IN CONCRETE FD DOT DISK
- FD 3/8 REROD FB #3 PG 31
- 3/4X24 REROD

Donald Barnes
7/25/1996

V1 (1)