

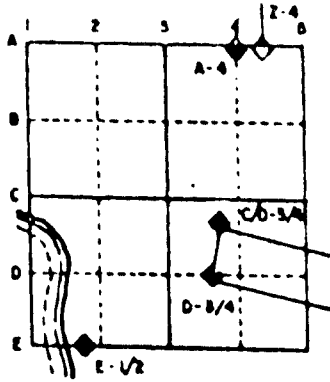
PUBLIC LAND SURVEY MONUMENT RECORD

For Public Land Survey Corners in the
T. 7 N., R. 9 E
CORNER CODE INDEX

	1	2	3	4	5	6	7	8	9	10	11	12	13	14	15	16	17	18	19	20	21	22	23	24	25
A																									
B																									
C	6																								
D		5																							
E			4																						
F				3																					
G					2																				
H	7																								
I		6																							
J			5																						
K				4																					
L					3																				
M						2																			
N							1																		
O	8																								
P		7																							
Q			6																						
R				5																					
S					4																				
T						3																			
U							2																		
V								1																	
W	9																								
X		8																							
Y			7																						
Z				6																					

PLACE MONUMENT SYMBOL (◊) AT PROPER LOCATION ON ABOVE INDEX

EXAMPLE



ALBANY TWP
 ROCK COUNTY WI

IF AVAILABLE
 STATE PLANE COORDINATES

North (Y) 282,705.71 Eleve. (Z) _____
 East (X) 400,444.97 Zone _____
 Hor. Datum _____ Vert. Datum _____

◊ CORNER MONUMENT

○ WITNESS MONUMENT

File IN MAGNOLIA TWP
 M 1

BEARINGS ARE BASED ON:

SHEET 1 OF 3

CORNER CODE: _____

AL580

(B) Describe any record evidence, monument evidence, occupational evidence, testimonial evidence or any other material evidence you considered, and whether the monument was found or placed.

1833 BRINK SET QUARTER SECTION POST BUR OAK 10 N31 1/2W 33 & BURR OAK 16 S20W 70. 2640 TO NE & SE CORNERS OF SEC 24.

1873 RUGER VOL 2 PG 109 FOUND HH STONE ON COR. & FOUND SW BT & WHERE STUMP OF NW BT HAD BEEN DUG UP. CALLS FOR CORNER TO BE 83.33' NORTH OF THE W 1/16TH CORNER OF THE SW 1/4 OF SEC 18.

1937 SUNNY VOL 3 PG 353 DUG 4X5 4' DEEP HOLE AND FOUND NO MONUMENT. MAP SHOWS HOLE IS AT CENTER OF N/S & E/W CENTER OF ROADS.

1977 TALARCZK- CORNER SET BY PROPORTIONATE MEASUREMENT & EXISTING PHYSICAL EVIDENCE. HE PLACED ALUM. MON. & REFERENCED SAME. CALLS FOR 2610.69 TO NE COR SEC 24, 2653.89 TO SE COR SEC 24 & AN ANGLE OF 180-00-00 FROM THE SE TO THE NE CORNERS AT THE E 1/4 CORNER OF SEC 24. DRAWING SHOWS MONUMENT IS 12 W OF THE EAST EDGE OF PAVEMENT, 10' EAST OF THE WEST EDGE OF THE PAVEMENT, 7 SOUTH OF THE NORTH EDGE OF PAVEMENT, & 14 NORTH OF THE SOUTH EDGE OF THE PAVEMENT.

FOUND ALUM. MON. ABOUT .3 DEEP. CORNER WAS paneled FOR AIRPHOTO PROJECT. THE PROJECT IS PART OF GREEN COUNTY'S GIS PROGRAM. CENTER OF PANEL IS A FEW TENTHS OFF FROM MONUMENT. MONUMENT IS AT CENTER OF N/S PAVEMENT & 2' SOUTH OF THE NORTH EDGE OF PAVEMENT PROJECTED FROM THE WEST. DID NOT ACCEPT FOUND ALUM. MONUMENT BECAUSE IT 15.54' FARTHER NORTH THAN RUGERS RECORD DISTANCE.

C) Was the corner restored through acceptance of (1) an obliterated evidence location, or, (2) a found perpetuated location?

DID NOT RESTORE CORNER BECAUSE THE HH THAT RUGER FOUND SHOULD STILL BE THERE. THIS OPINION IS BASED ON THE TERRAIN. EXCAVATION SHOULD BE NO-33-16W 83.33 OF THE FOUND W 1/16TH CORNER OF THE SW 1/4 OF SECTION 18.

D) Describe any material discrepancy between the location of the corner as restored or reestablished and the location of that corner as previously restored or reestablished by distance and direction. Show the discrepancy on the plan view drawing under (a), above. Show the distances between the corner as previously restored or reestablished and (1) the corner as restored or reestablished, and (2) to at least 4 of the witness monuments shown on the drawing in (a), above.

(E) Was the corner reestablished through lost corner proportionate methods? If so, show the method, including the directions and distances to other public land survey corners used as evidence or used for proportioning the corner location.

NO

I, Donald Barnes, hereby certify that the corner points as identified by the corner code index were, in a field survey on, APRIL 24, 1995, established, re-established, monumented, re-monumented, recovered or restored as expressed below and in conformance with the regulations and rules as required in the current manual of survey instructions of the United States Department of Interior, Bureau of Land Management.

COUNTY SURVEYOR FILING DATA

Date of computer entry _____

Date microfilmed _____

Number of included sheets _____
CORNER CODE

seal

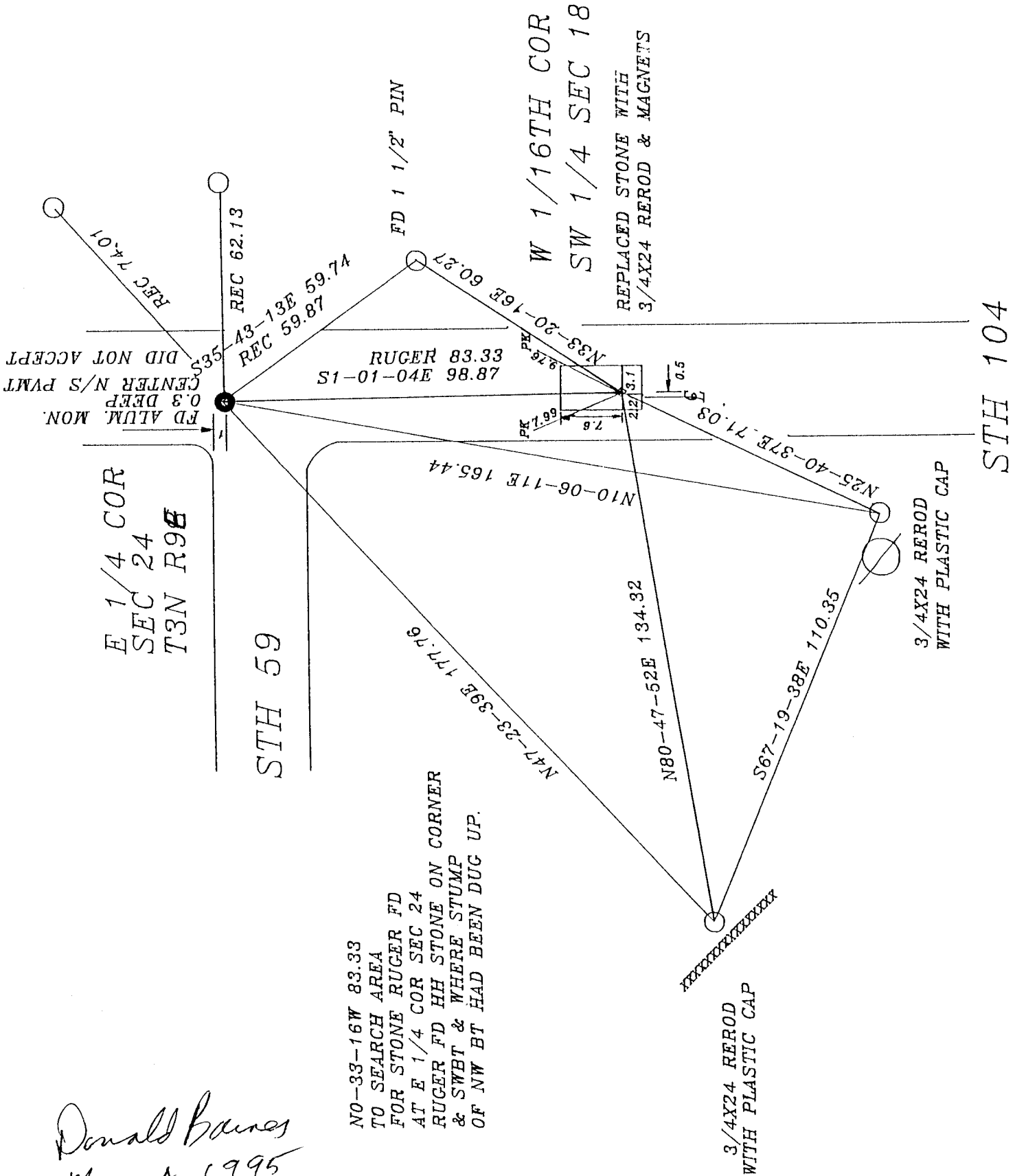
Donald Barnes
May 4 1995

EMBOSS LAND SURVEYOR SEAL

M(11)

~~225~~

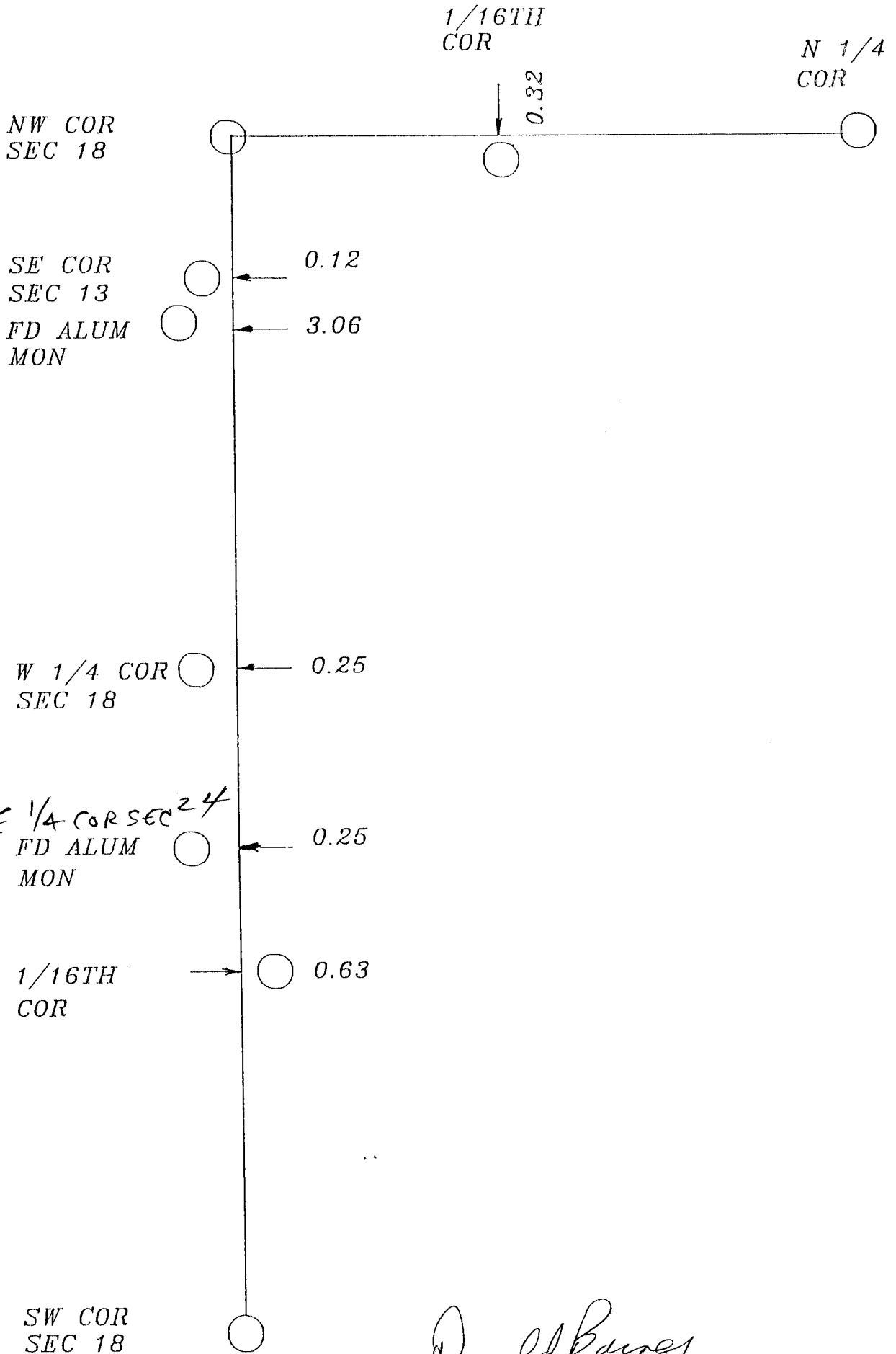
Donald Barnes
May 4 1995



FB #4 PC 62,67,68 &

STH 104

M 1 ~~177~~



Donald Barnes
 May 4, 1995

M 1 (1)
~~N 25~~