

PUBLIC LAND SURVEY MONUMENT RECORD

For Public Land Survey Corners in the

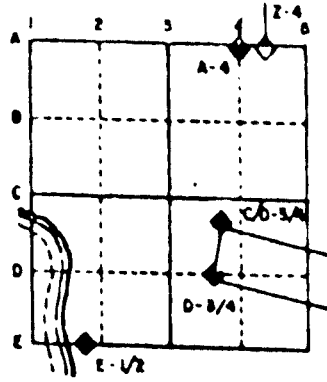
T. 3 N., R. 10 E.

CORNER CODE INDEX

1	2	3	4	5	6	7	8	9	10	11	12	13	14	15	16	17	18	19	20	21	22	23	24	25	
A																									
B	6																								
C		5																							
D			4																						
E				3																					
F					2																				
G	7																								
H		8																							
I			9																						
J				10																					
K					11																				
L						12																			
M							13																		
N								14																	
O									15																
P										16															
Q											17														
R												18													
S													19												
T														20											
U															21										
V																22									
W																	23								
X																		24							
Y																			25						
Z																				26					
																					27				
																						28			
																							29		
																								30	
																									31
																									32
																									33
																									34
																									35
																									36

PLACE MONUMENT SYMBOL (●) AT PROPER LOCATION ON ABOVE INDEX

EXAMPLE



MAGNOLIA TWP
ROCK COUNTY WI

IF AVAILABLE
STATE PLANE COORDINATES

North (Y) 285,278.15 Eleve. (Z) _____
 East (X) 400,421.89 Zone _____
 Hor. Datum _____ Vert. Datum _____
 16TH COR SE COR 285,323.69
 400,418.62 SEC 13 400,421.49

◆ CORNER MONUMENT

○ WITNESS MONUMENT

BEARINGS ARE BASED ON:

w1/6ofnw1/4 ma

(B) Describe any record evidence, monument evidence, occupational evidence, testimonial evidence or any other material evidence you considered, and whether the monument was found or placed.

1873 RUGER VOL 2 PG 109 DROVE STAKE DEEP & PUT ON TOP OF IT SANDSTONE 12X9X5. CALLS FOR 1333.10 TO THE W 1/4 & NW CORNERS OF SEC 18. ALSO CALLS FOR 45.54 TO THE SE CORNER OF SEC 23 T3N R9E. AT THE SE CORNER OF SEC 23 FOUND REMAINS OF OLD STAKE ALSO NW BT & REMAINS OF STUMP OF S.W.B.T. DROVE NEW STAKE DEEP & PUT ON TOP OF IT SANDSTONE 17X12X7.

DUG 6' DEEP & FOUND NOTHING. SOIL INDICATES AREA MAY HAVE BEN CUT FOR ROAD CONSTRUCTION. ESTABLISHED CORNER ON LINE WITH NW & W 1/4 CORNERS OF SEC 18 AT MID POINT.

C) Was the corner restored through acceptance of (1) an obliterated evidence location, or, (2) a found perpetuated location?

RESTORED CORNER THROUGH ACCEPTANCE OF OBLITERATED EVIDENCE LOCATION.

D) Describe any material discrepancy between the location of the corner as restored or reestablished and the location of that corner as previously restored or reestablished by distance and direction. Show the discrepancy on the plan view drawing under (a), above. Show the distances between the corner as previously restored or reestablished and (1) the corner as restored or reestablished, and (2) to at least 4 of the witness monuments shown on the drawing in (a), above.

(E) Was the corner reestablished through lost corner proportionate methods? If so, show the method, including the directions and distances to other public land survey corners used as evidence or used for proportioning the corner location.

NO

I, Donald Barnes, hereby certify that the corner points as identified by the corner code index were, in a field survey on, April 21, 1995, established, re-established, monumented, re-monumented, recovered or restored as expressed below and in conformance with the regulations and rules as required in the current manual of survey instructions of the United States Department of Interior, Bureau of Land Management.

seal

Donald Barnes
4/24/95

EMBOSS LAND SURVEYOR SEAL

COUNTY SURVEYOR FILING DATA

Date of computer entry _____

Date microfilmed _____

Number of included sheets _____

CORNER CODE

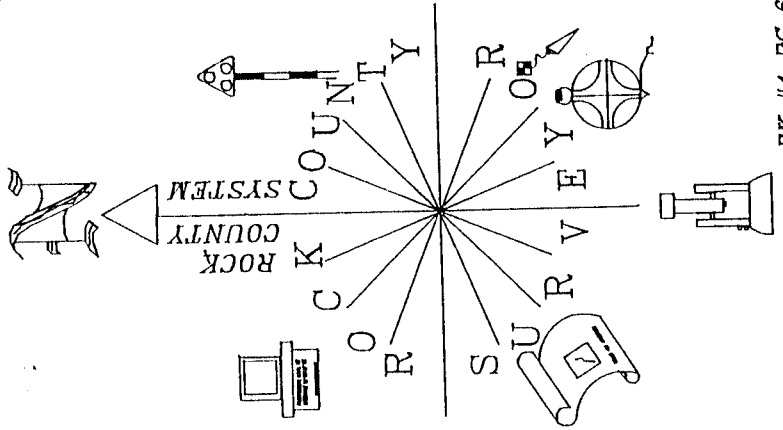
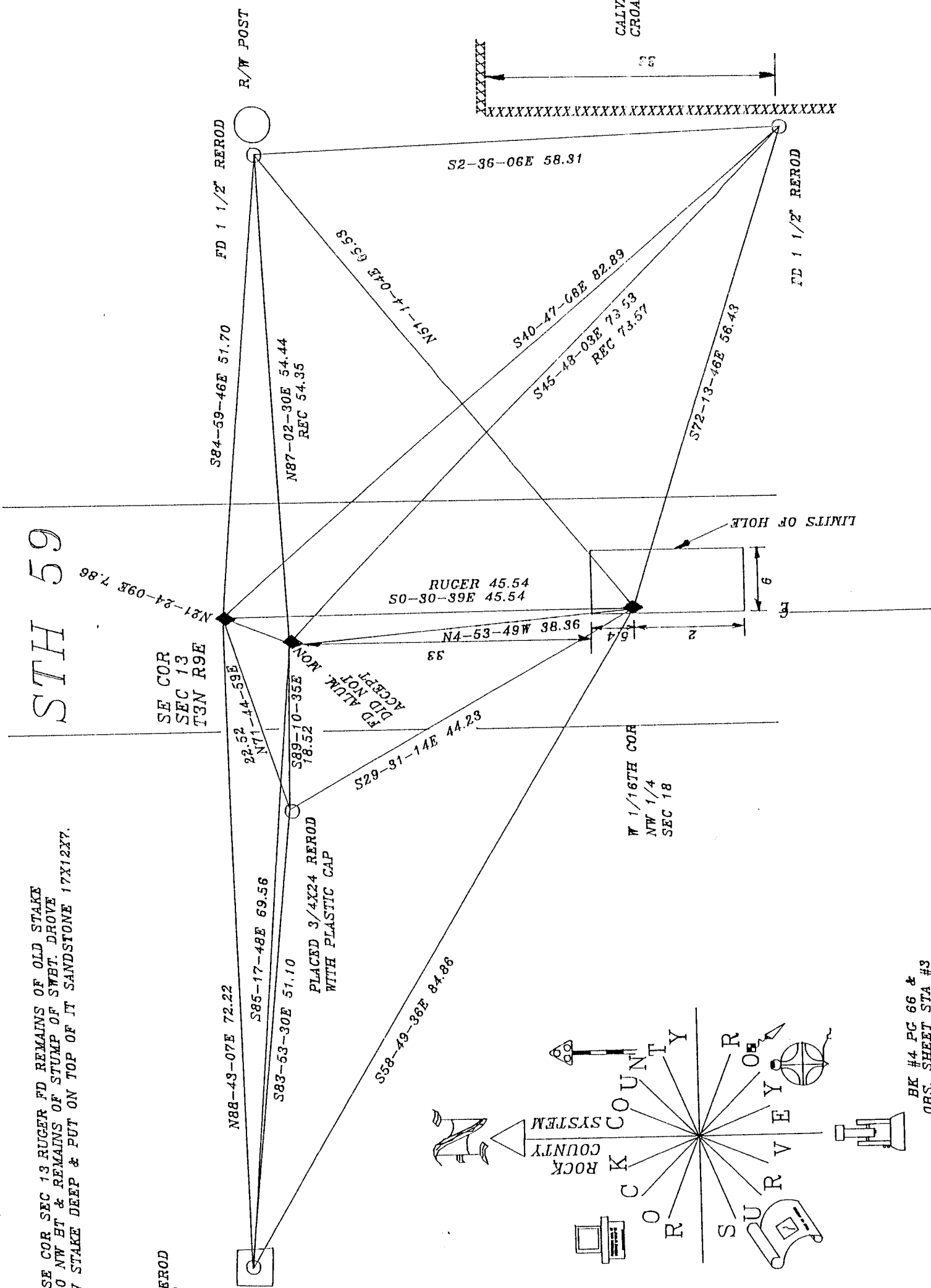
K1 (1)

STH 59

AT SE COR SEC 13 RUGER FD REMAINS OF OLD STAKE
 ALSO NW BT & REMAINS OF STUMP OF SWBT. DROVE
 NEW STAKE DEEP & PUT ON TOP OF IT SANDSTONE 17X12X7.

PLACED 3/4X24 REROD
 WITH PLASTIC CAP

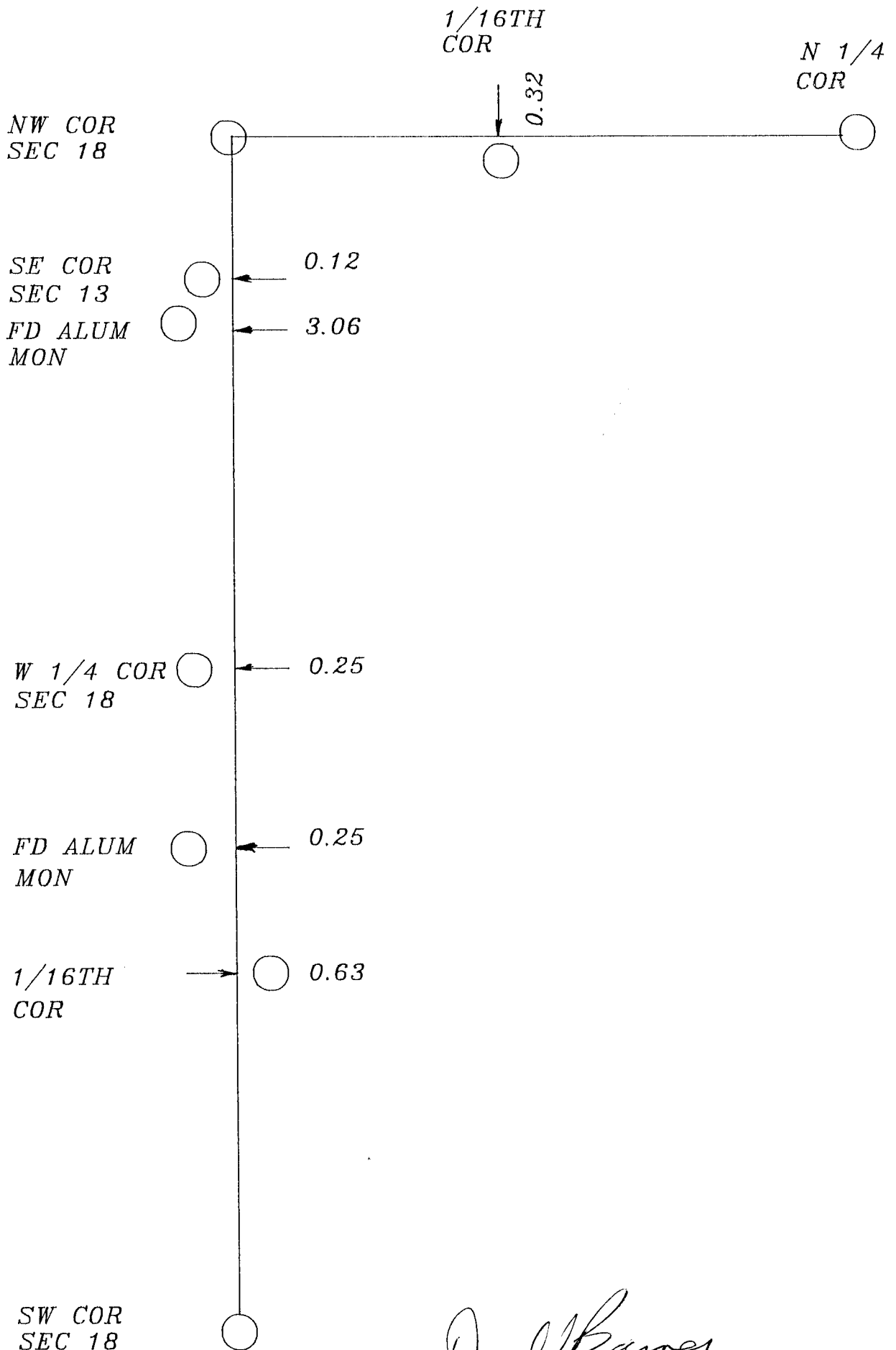
HSE SIGN
 HSE #N6099



BK #4 PG 66 &
 OBS. SHEET STA #3
 FILE #MA2573

Donald Barnes
 May 4 1995

K1(1)
~~4/4/95~~



Donald Barnes
May 4, 1995