

# U.S. PUBLIC LAND SURVEY MONUMENT RECORD

For Public Land Survey Corners in:

WI ADMINISTRATIVE CODE A-E 7.08 REQUIREMENT

T. 2N., R. 9E

### CORNER CODE INDEX

A	1	2	3	4	5	6	7	8	9	10	11	12	13	14	15	16	17	18	19	20	21	22	23	24	25
B																									
C	6						5					4						3							1
D																									
E																									
F																									
G	1						8					9						10						11	12
H																									
J																									
K																									
L	18						17					16						15						14	13
M																									
N																									
O																									
P	19						20					21						22						23	24
Q																									
R																									
S																									
T	30						29					28						27						26	25
U																									
V																									
W																									
X	31						32					33						34						35	36
Y																									
Z																									

Decatur TWP  
~~ROCK~~ COUNTY WI  
 Green IF AVAILABLE  
 ROCK COUNTY COORDINATES PREFERRED

North \_\_\_\_\_ Elev. \_\_\_\_\_  
 East \_\_\_\_\_  
 Hor. Datum \_\_\_\_\_ Vert. Datum \_\_\_\_\_  
 LATITUDE \_\_\_\_\_ ELLIPS. HT. \_\_\_\_\_  
 LONGITUDE \_\_\_\_\_  
 GPS (X) \_\_\_\_\_ TRAVERSE (X) \_\_\_\_\_  
 BASED ON THE FOLLOWING CONTROL:

PLACE MONUMENT SYMBOL  AT PROPER LOCATION ON ABOVE INDEX

CORNER MONUMENT       WITNESS MONUMENT

(a)

KHADER ABU AL-EIS WITH THE WISCONSIN DEPARTMENT OF TRANSPORTATION WAS THE PROJECT ENGINEER FOR THE STH 104 PROJECT. HE REVISED EXISTING TIE SHEETS OF GREEN COUNTY'S PLSS CORNERS AND SENT THEM TO THE ROCK COUNTY SURVEYOR. THE REVISED SHEET IS TAPED TO THE BACK SIDE.

AUGUST 13, 1996      DONALD BARNES, ROCK COUNTY SURVEYOR

BEARINGS ARE BASED ON:

FIELD BOOK \_\_\_\_\_ PAGE # \_\_\_\_\_ SHEET \_\_\_\_\_ OF \_\_\_\_\_

SHOW A PLAN VIEW DRAWING DEPICTING THE CORNER MONUMENT AND SURROUNDING PHYSICAL FEATURES, INCLUDING THE EXCAVATION AREA AND DEPTH.

PLANNING & ZONING COMMITTEE ADOPTED THE ABOVE FORM ON 12/2/1982

CORNER CODE Y-001 (1)

Filed: Magnolia Twp., Rock County

# SECTION CORNER TIES

TO THE EAST 1/4 CORNER OF SECTION 1, TOWN 2 NORTH, RANGE 9 EAST,  
GREEN COUNTY, WISCONSIN.

NOTE: TOP OF MONUMENT AT GRADE.

LEGEND



CAST ALUMINUM MONUMENT



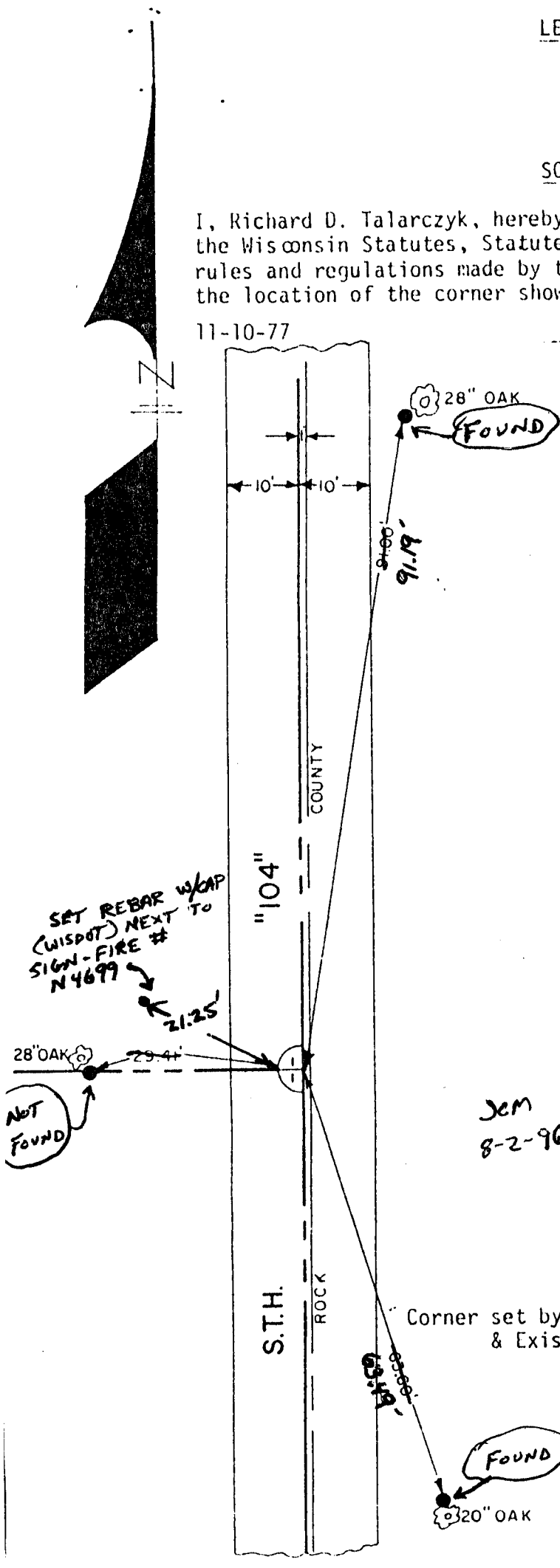
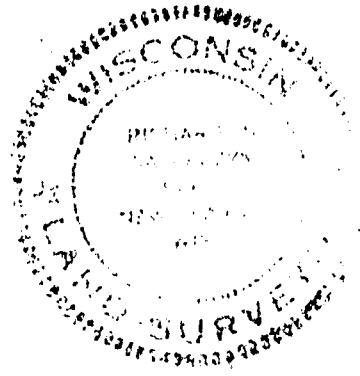
#10 x 30" IRON ROD

SCALE 1" = 20'

I, Richard D. Talarczyk, hereby certify that I have complied with the Wisconsin Statutes, Statutes of the United States, and the rules and regulations made by the Secretary of the Interior in the location of the corner shown below.

11-10-77

*Richard D. Talarczyk*  
Richard D. Talarczyk



Corner set by Proportionate Measurement & Existing Physical Evidence.

6-20

DRAWN BY	RM	<b>DICK TALARCZYK</b> <b>LAND SURVEYING</b> RT. 1 NEW GLARUS, WISC. 53574 PHONE (608) 527-5216
CHECKED	RPT	
JOB NO.	174	
BOOK	PAGE	

Y-001(1)