

U.S. PUBLIC LAND SURVEY MONUMENT RECORD

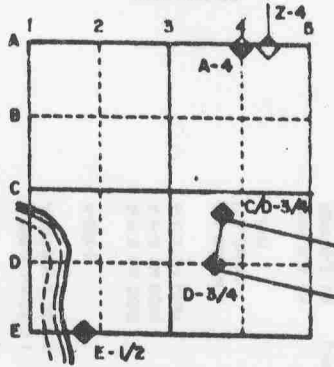
For Public Land Survey Corners in the
T. 1 N., R. 12 E.

CORNER CODE INDEX

1	2	3	4	5	6	7	8	9	10	11	12	13	14	15	16	17	18	19	20	21	22	23	24	25
A																								
B	6	5	4	3	2																			
C																								
D																								
E																								
F																								
G	7	8	9	10	11	12																		
H																								
I																								
J																								
K	18	17	16	15	14	13																		
L																								
M																								
N																								
O																								
P	19	20	21	22	23	24																		
Q																								
R																								
S																								
T	30	29	28	27	26	25																		
U																								
V																								
W																								
X																								
Y	31	32	33	34	35	36																		
Z																								

PLACE MONUMENT SYMBOL (◆) AT PROPER LOCATION ON ABOVE INDEX

EXAMPLE



BELOIT TWP
ROCK COUNTY WI

IF AVAILABLE STATE PLANE COORDINATES

North (Y) _____ Eleve. (Z) _____
 East (X) _____ Zone _____
 Hor. Datum _____ Vert. Datum _____

◆ CORNER MONUMENT

○ WITNESS MONUMENT

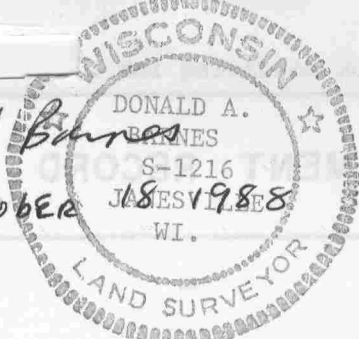
BEARINGS ARE BASED ON:

MICROFILMED

SHEET 1 OF 4

CORNER CODE: Z 13 (2)

Donald Barnes
October 18 1988



Since different surveys are based on the aluminum monument and also the gas pipe, I did some additional field work and investigation. In 1940 Shimeall states on his map that before placing any points a thorough search for old corners was made. He placed a gas pipe at the North 1/4 corner of section 1 T 46 N R1E by using Tissandies' old notes which were done in 1907. He shows that this corner is 9.15' south of a line that is between the NW corner of section 1 and the NE corner of section 1. At the NE corner of section 1, he found a stone. He placed the SW corner of section 34 on line between the NW corner of section 1 and the North 1/4 corner of section 1. In 1954 Shimeall established and installed many property corners in the SW quarter of the section. Also in 1971 he surveyed and mapped a Certified Survey Map, volume 2 page 48. It appears from using his record distances and bearings with some of his pipes that I found, he used the gas pipe which is S13-32-17E 2.67' of the aluminum monument at the SW corner of section 34. It also appears that he surveyed the south line of the SW quarter of section 34 as a straight line between the pipe and the South quarter corner of section 34. La-Mor subdivision which was surveyed and mapped by R. Batterman in 1947 appears by using record bearings and distances to have used the gas pipe which is South of the aluminum monument. A computed angle from the computed center, a point on line with the gas pipe at record distance from the South quarter corner, and the South quarter corner is 90-29-49. This is the same as Batterman's record angle.

Bearings and distances that supports that the aluminum monument replaced the gas pipe which Shimeall installed in 1940.

- 1) The distances between this corner and the 1/16th corner to the North and that corner and the West quarter corner of section 34 are within .7' of his record distances.
- 2) His map showed that the gas pipe is 7.77' South of a straight line between the NW corner of section 1 and the NE corner of section 1. Because of extensive road improvements at this particular portion of the road I did not find the stone nor did I search for it. In order to establish this line, I established the line 1.37' north of the South quarter corner of section 34 as Shimeall mapped. Using this line, the distance between it and the aluminum monument is 7.64' which is within .13' of Shimeall's distance.
- 3) The distance between the NW corner of section 1 and the aluminum monument is within 1.03' of Shimeall's distance.
- 4) The angle from the West 1/16th corner of the SW quarter of section 34 and the aluminum monument to the found rerod near the North quarter corner of section 1 does not agree by one degree. In my opinion this is because the rerod is not at the location that Shimeall established. I searched for his gas pipe and also

Z 13(2)

the gas pipe that is 9.15' North and on the line between the NW corner of section 1 and the NE corner of section 1. If his distances to the aluminum monument and to the NW to NE corner line is used to compute a point, then the computed angle is 179-

36-24 which is within 30 seconds of Shimeall's record angle.

5) I used Shimeall's record distances and bearings to compute the center of section 34 from the W 1/16th corner of the SW corner of section 34 and the aluminum monument. The computed distance to the line between the computed position of the South quarter corner of section 34 and the North quarter corner of section 1 is 1329.56 which is within .84' of Shimeall's distance and is 5.90' South of the line between the NW corner of section 1 and a point 1.37' North of the South quarter corner of section 34. Shimeall recorded this distance as 5.93'.

Bearings and distances that support that the gas pipe which is S13-32-17E 2.67' is the monument that Shimeall used in his 1954 survey, Certified Survey, and other surveys. Also this appears to be the monument that was used in the 1947 La-Mor subdivision.

1) The angle between the W 1/16th corner of the SW 1/4, the gas pipe, and the S 1/4 corner of section 34 is within 2 seconds of Shimeall's record angle.

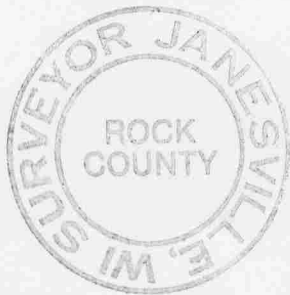
2) The distance between the gas pipe and the 1/64th corner to the North is within a tenth of the distance that is between that 1/64th corner and the W 1/16th corner of the SW 1/4.

3) The distance from the SW corner of the CSM to the line between the gas pipe and the S 1/4 corner of section 34 is? and the record is 40.00'.

In my opinion the aluminum monument which replaced Shimeall's first gas pipe should remain the corner. This will probably be in conflict with most of the surveys. However there are other surveys that used the gas pipe which was installed in 1940. I found a pin which is about 992.10 East of the aluminum monument and 31.21 North of a line between the SW and South quarter corners of section 34. Just 1.96' South of the pin is a pipe. This pin is also about 604.34' East of the computed North quarter corner of Section 1 and 32.96' North of a line between the computed North quarter corner of section 1 and the South quarter corner of section 34. It is 31.21' North of a line between the SW and South quarter corners of Section 34, and 32.83' North of a line between the gas pipe and the South quarter corner of section 34.

The previously computed South 1/16th corner of the South West quarter of section 34 is .1' South of a line between the gas pipe and the South quarter corner of section 34. The gas pipe may have been placed by projecting this line.

Therefore, it was his opinion that such authorizations must be



secured before a lost state Shimeall established the N 1/4 corner of section 1 by using Tissandie's old notes which perpetuated the state boundary line. His placement of the SW corner of section 34 on a line between the NW corner and N 1/4 corner of section 1 was proper. His reason for the placement of the second pipe south of his first was never documented. It is possible that he placed it because he could not find his original pipe and he intended the location to be the same as the first. Regardless, the second gas pipe is South of the NW corner and the N 1/4 corners of section 1 T46N R1E as Shimeall determined in 1940. Thus this location would be in conflict with the North line of the Illinois line.

Z 13(2)

Also Attorney General opinion dated October 18, 1983 should be

considered. Basically that opinion stated that since Wisconsin has adopted the Manual of Instructions for the Survey of the Public Lands of the United States (1973) for such surveys. Section 5-19 of the Manual requires an order of the United States Supreme Court or authorization of the adjoining states plus congressional approval to replace a lost state boundary monument. Therefore, it is his opinion that such authorizations must be secured before a lost state boundary marker can be reset. Thus if Shimeal's first gas pipe was not the perpetuation of the section corner or if the second corner is the corner than authority is required as indicated by the Attorney General.



18 November 1988



MICROFILMED

(2) 13 (2)

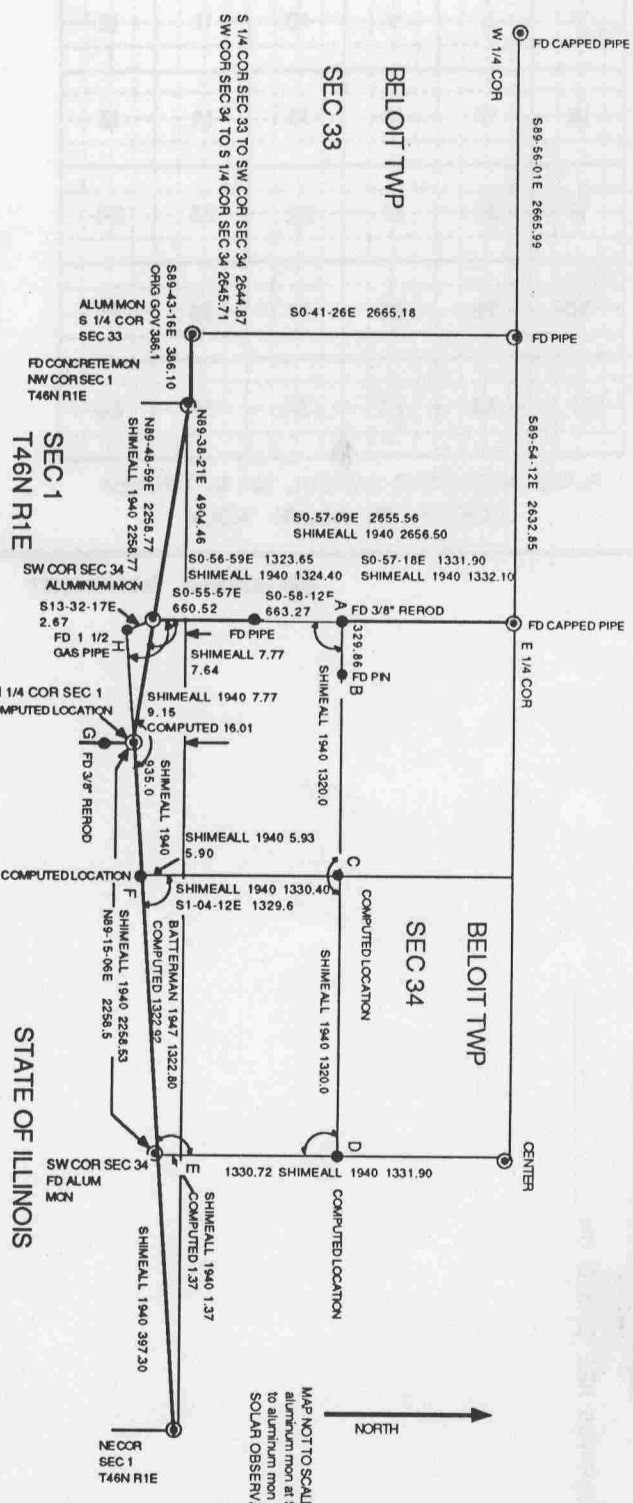
POWER CODE 518 (2)

CORNER CODE INDEX

BELOIT TWP
ROCK COUNTY, WI

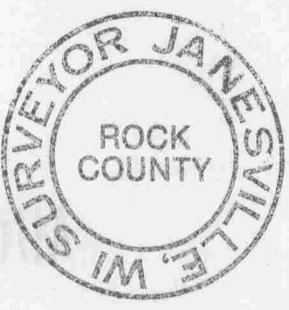
ANGLE	OBSERVER	DATE	DEG.	MIN.	SEC
A-SW-N 1/4 COR 1	SHIMEALL	1940	90	48	
A-SW-N 1/4 COR 1	COMPUTED		90	47	33
A-SW-E	COMPUTED		90	24	33
A-H-S 1/4 COR	SHIMEALL	1954	90	24	30
A-H-S 1/4 COR	SHIMEALL	1971	90	24	30
A-H-S 1/4 COR	COMPUTED		90	24	22
B-A-SW 34	SHIMEALL	1940	89	45	
B-A-SW 34	MEASURED		89	44	58
C-A-H	MEASURED		89	43	28
NW1-C-S 1/4	SHIMEALL	1940	179	37	
NW1-C-S 1/4	COMPUTED		179	36	24
C-F-S 1/4	BATTERMAN	1947	90	32	
C-F-S 1/4	COMPUTED		90	29	49
H-E-D	SHIMEALL	1940	89	19	
H-E-D	BATTERMAN	1947	89	20	
H-E-D	COMPUTED		89	24	09
SW34-E-D	COMPUTED		89	20	46
SW34-S1/4-D	COMPUTED		89	19	00

ANGLE	OBSERVER	DATE	DEG.	MIN.	SEC
E-D-C	SHIMEALL	1940	90	39	
D-C-A	SHIMEALL	1940	179	52	
C-F-E	R.H. BATTERMAN	1947	90	32	
C-F-E	COMPUTED		90	29	49
NW1-SW34-N1/4SEC1	COMPUTED		180	01	29
NW1-H-N1/4SEC1	COMPUTED		179	34	30
SW34-N1/4SEC1-S1/4SEC34	COMPUTED		179	35	08
SW34-N1/4SEC1-S1/4SEC34	SHIMEALL	1940	179	37	
NW1-N1/4SEC1-S1/4SEC 34	COMPUTED		179	36	24
NW1-N1/4SEC1-S1/4SEC 34	SHIMEALL	1940	179	37	



MAP NOT TO SCALE
aluminum mon at SW COR OF SEC 34
to aluminum mon at S 1/4 COR OF SEC 34
SOLAR OBSERVATION S89-39-45E

NORTH



713(2)