

# U.S. PUBLIC LAND SURVEY MONUMENT RECORD

For Public Land Survey Corners In: WI ADMINISTRATIVE CODE A-E 7.08 REQUIREMENT

T. 3 N. - R. 10 E. of the 4th P.M.

CORNER CODE INDEX

MAGNOLIA TWP

ROCK COUNTY WI

(PLACE "◆" SYMBOL AT PROPER PLSS CORNER LOCATION)

	1	2	3	4	5	6	7	8	9	10	11	12	13	14	15	16	17	18	19	20	21	22	23	24	25		
A																											A
B																											B
C																											C
D																											D
E																											E
F																											F
G																											G
H																											H
J																											J
K																											K
L																											L
M																											M
N																											N
O																											O
P																											P
Q																											Q
R																											R
S																											S
T																											T
U																											U
V																											V
W																											W
X																											X
Y																											Y
Z																											Z
	1	2	3	4	5	6	7	8	9	10	11	12	13	14	15	16	17	18	19	20	21	22	23	24	25		

**COORDINATES**

(GNSS DERIVED VIA WISCORS)

NORTHING: 270574.68      ELEV: N/A  
 EASTING: 421937.96

Hor. Datum: WCCS-ROCK, (NA2011)

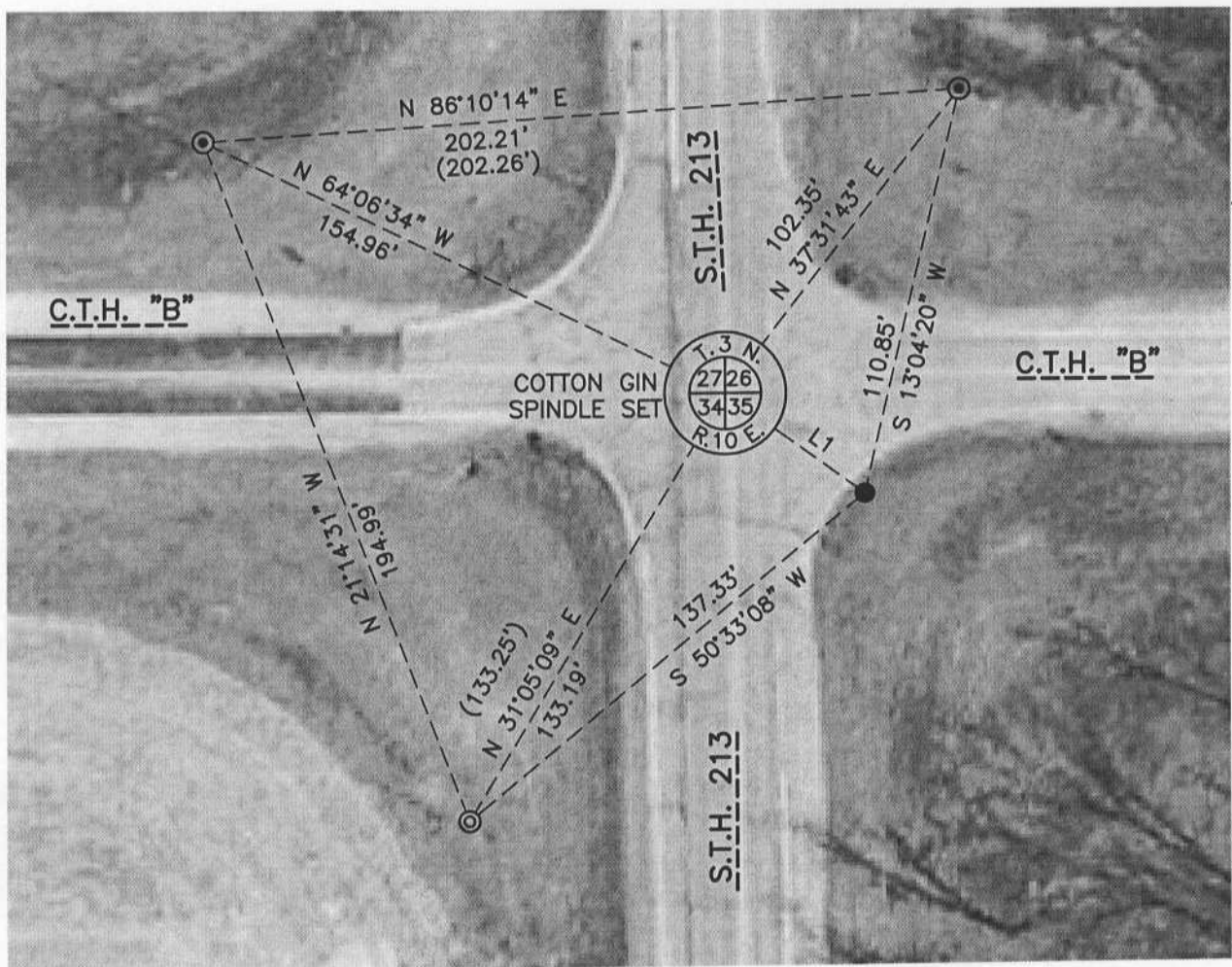
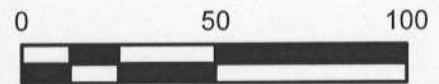
Vertical Datum: NAVD 88, (if applicable)

**(a) LEGEND**

- - 3/4" x 24" REBAR SET, (RED CAP W/"PLSS WITNESS")
- ⊙ - 1/2" IRON REBAR FOUND
- ⊙ - IRON PIPE FOUND
- (#) - PREVIOUS TIE-SHEET DIMENSION

LINE TABLE:

LINE	BEARING	DISTANCE
L1	S 54°16'39" E	45.91'



**B) Describe any record evidence, monument evidence, occupational evidence, testimonial evidence or any other material evidence you considered, and whether the monument was found or placed.**

I found a plowed/bent over railroad spike at the PLSS corner and three of the four witnesses on the V-17(2) tie-sheet prepared by Lathrop, (2013); the fourth witness was found to be disturbed. I calculated the corner location by distance/distance intersection from the two northerly ties; the dimension to the 3<sup>rd</sup> tie, (Southwest), checks to 0.06'. I set a cotton gin spindle at the PLSS corner location and a 4<sup>th</sup> witness per the sketch.

**C) Was the corner restored through acceptance of (1) an obliterated evidence location, or, (2) a found perpetuated location?**

This PLSS corner was obliterated and restored from record witnesses.

**D) Describe any material discrepancy between the location of the corner as restored or reestablished and the location of that corner as previously restored or reestablished by distance and direction. Show the discrepancy on the plan view drawing under (a), above. Show the distances between the corner as previously restored or reestablished and (1) the corner as restored or reestablished, and (2) to at least 4 of the witness monuments shown on the drawing in (a), above.**

I did not find a discrepancy between the corner restored and a previously documented corner location. *Discrepancy* being defined as *disagreeing* with a corner location, *not* as noting dimensional differences between current/former tie sheets due to measuring methods. The current and *most recent* tie-sheet dimensions filed for the corner are noted, (Lathrop, 2013).

**(E) Was the corner reestablished through lost corner proportionate methods? If so, show the method, including the directions and distances to other public land survey corners used as evidence or used for proportioning the corner location.**

N/A

I, **Jason R. Houle**, hereby certify that the corner location as identified by the corner code index was determined by me under my direction and control and that this U.S. Public Land Survey Monument is correct and complete to the best of my knowledge and belief.

**CORNER CODE: V-17**  
**(A.E. 7.08 REQUIREMENT)**

