

U.S. PUBLIC LAND SURVEY MONUMENT RECORD

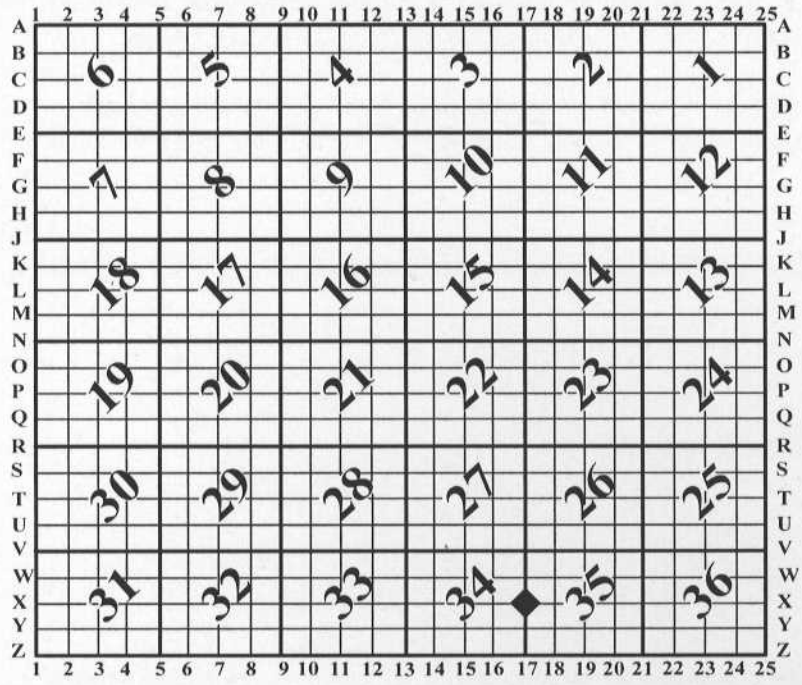
For Public Land Survey Corners In: WI ADMINISTRATIVE CODE A-E 7.08 REQUIREMENT
T. 3 N. - R. 10 E. of the 4th P.M.

CORNER CODE INDEX

MAGNOLIA TWP

ROCK COUNTY WI

(PLACE "◆" SYMBOL AT PROPER PLSS CORNER LOCATION)



COORDINATES

(GNSS DERIVED VIA WISCORS)

NORTHING: 267920.87 ELEV: N/A
 EASTING: 421949.59

Hor. Datum: WCCS-ROCK, (NA2011)

Vertical Datum: NAVD 88, (if applicable)

(a) LEGEND

- - 3/4" x 24" REBAR SET, (RED CAP W/"PLSS WITNESS, S-2331")
- ⊙ - CAPPED WDOT REBAR FOUND
- ⊙ - IRON PIPE FOUND
- (#) - PREVIOUS TIE-SHEET DIMENSION

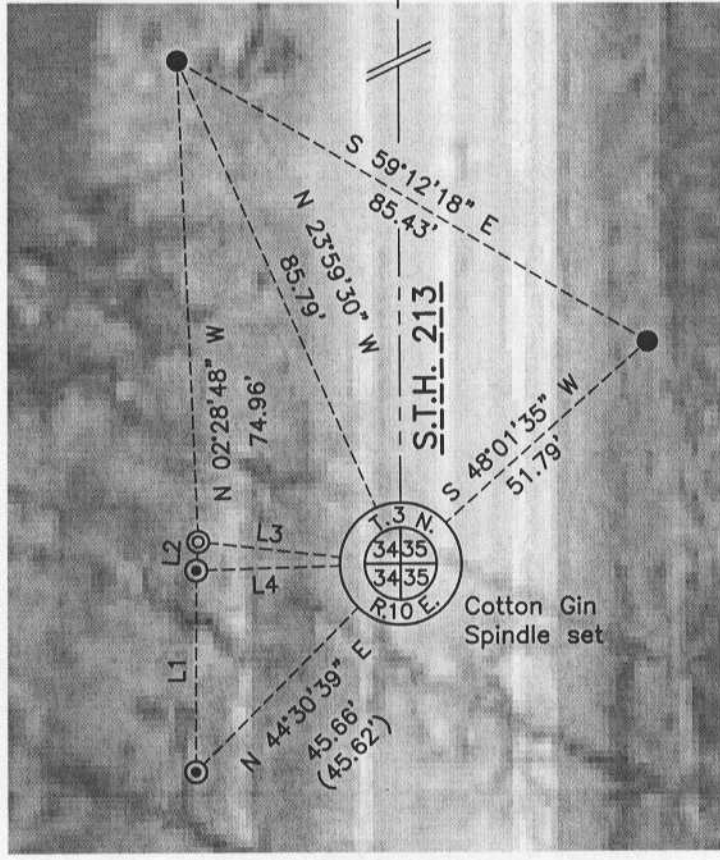
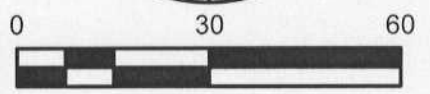
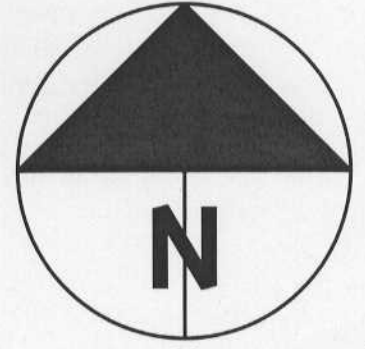


Cotton Gin Spindle found

LINE TABLE:

LINE	BEARING	DISTANCE	
L1	N 00°06'48" E	31.59'	(31.57')
L2	N 03°57'56" E	4.46'	
L3	S 83°42'44" E	31.83'	(31.86')
L4	S 88°16'01" W	31.96'	(32.04')

W
N 00°15'04" W
2653.84'
N



Field book: Magnolia 2013-2014

Page: 58

Page 1 of 2

Corner code: X-17

B) Describe any record evidence, monument evidence, occupational evidence, testimonial evidence or any other material evidence you considered, and whether the monument was found or placed.

I found three witnesses from the most recent tie-sheet for this corner, (Barnes 1999). Based on aerial photos and missing/disturbed monuments, tree line clearing and fence removal occurred on the east side of STH 213. Also, the most recent tie-sheet accepts a PK nail at the corner location; a previous tie-sheet, (Barnes 1988), shows dimensions that I used for this tie-sheet. The PK nail contained dimensional differences that I can replicate however, are too large to ignore; The 1988 vs. 1999 tie-sheet contain differences up to 0.18 feet.

I calculated the PLSS corner from the most northerly and southerly witnesses by way of distance/distance intersection from the 1988 tie-sheet. A cotton gin spindle was set at the corner along with two additional witnesses per the sketch.

C) Was the corner restored through acceptance of (1) an obliterated evidence location, or, (2) a found perpetuated location?

This PLSS corner was obliterated and restored from record witnesses.

D) Describe any material discrepancy between the location of the corner as restored or reestablished and the location of that corner as previously restored or reestablished by distance and direction. Show the discrepancy on the plan view drawing under (a), above. Show the distances between the corner as previously restored or reestablished and (1) the corner as restored or reestablished, and (2) to at least 4 of the witness monuments shown on the drawing in (a), above.

I did not disagree with an in-place monument and the corner was calculated from found witnesses per question A.

An undisturbed, subsurface monument may or may not exist at this location. Given the proximity of in-place witnesses and the location of the PLSS corner, (roughly centered in the Southbound 213 lane), I did not dig.

(E) Was the corner reestablished through lost corner proportionate methods? If so, show the method, including the directions and distances to other public land survey corners used as evidence or used for proportioning the corner location.

N/A

I, **Jason R. Houle**, hereby certify that the corner location as identified by the corner code index was determined by me under my direction and control and that this U.S. Public Land Survey Monument Record is correct and complete to the best of my knowledge and belief.

CORNER CODE: X-17
(A.E. 7.08 REQUIREMENT)

