

# U.S. PUBLIC LAND SURVEY MONUMENT RECORD

For Public Land Survey Corners in:

WI ADMINISTRATIVE CODE A-E 7.08 REQUIREMENT

T. 2 N., R. 13 E

### CORNER CODE INDEX

A	1	2	3	4	5	6	7	8	9	10	11	12	13	14	15	16	17	18	19	20	21	22	23	24	25
B																									
C	6																								
D																									
E																									
F	1	8																							
G																									
H																									
J																									
K	18	11																							
L																									
M																									
N																									
O																									
P	19	20																							
Q																									
R																									
S	30	29																							
T																									
U																									
V																									
W																									
X	31	32																							
Y																									
Z																									

KOSH KONONG TWP  
ROCK COUNTY WI

IF AVAILABLE  
ROCK COUNTY COORDINATES PREFERRED

North \_\_\_\_\_ Elev. \_\_\_\_\_

East \_\_\_\_\_

Hor. Datum \_\_\_\_\_ Vert. Datum \_\_\_\_\_

LATITUDE \_\_\_\_\_ ELLIPS. HT. \_\_\_\_\_

LONGITUDE \_\_\_\_\_

GPS (X) \_\_\_\_\_ TRAVERSE (X) \_\_\_\_\_

BASED ON THE FOLLOWING CONTROL:

PLACE MONUMENT SYMBOL  $\blacklozenge$  AT PROPER LOCATION ON ABOVE INDEX

$\blacklozenge$  CORNER MONUMENT

$\circ$  WITNESS MONUMENT

(a)

THOMAS WOLLIN, JEFFERSON COUNTY SURVEYOR,  
PROVIDED THE STATE PLANE COORDINATES FOR  
CORNER CODE #8701.4 COR MP SEC 33 T 5 N R 13 E

STATE PLANE COORDINATES N/S 310,086.708  
NAD 1983/91 OF RECORD E/W 2,244,691.822

I DONALD BARNES CONVERTED THE ABOVE  
COORDINATES TO THE FOLLOWING:

LATITUDE 42-50-45.97992  
LONGITUDE 88-58-12.40384  
MERIDIAN CONV. 0-42-27.5  
SCALE FACTOR 0.999979131

ROCK COUNTY COORDINATES (NAD 1983/91)  
N/S 328,627,396  
E/W 507,385.715  
SCALE 0.9999968568  
CONVERGENCE: THE ANGULAR DIFFERENCE  
BETWEEN THE GEODETIC NORTH & THE ROCK  
COUNTY MERCATOR NORTH

$\oplus$  ~~0~~ DEG ~~04~~ MIN 10 SEC

*Donald Barnes*  
02/12/03

BEARINGS ARE BASED ON:

FIELD BOOK \_\_\_\_\_ PAGE # \_\_\_\_\_

SHEET 1 OF 1

SHOW A PLAN VIEW DRAWING DEPICTING THE CORNER MONUMENT AND SURROUNDING  
PHYSICAL FEATURES, INCLUDING THE EXCAVATION AREA AND DEPTH.

PLANNING & ZONING COMMITTEE ADOPTED THE ABOVE FORM ON 12/2/1982

File in M. LTON TWP

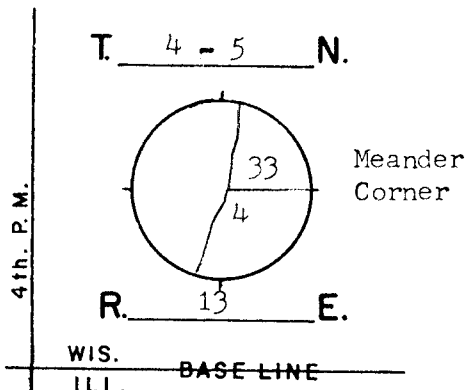
CORNER CODE A-10

# GOVERNMENT LAND CORNER RECORD

## JEFFERSON COUNTY

CORNER NO. 8701.4

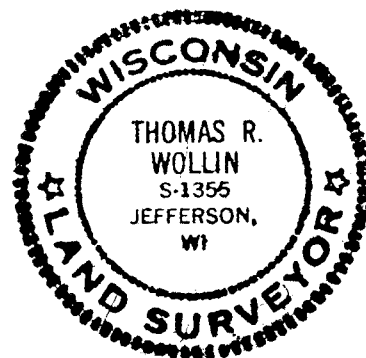
TYPE OF MONUMENT Iron Pipe  
 STATE PLANE COORDINATES N. 310086.708 Meander  
NAD 1983/91 E. 2244691.822 Corner  
 ELEVATION M.S.L. DATUM: \_\_\_\_\_  
Grid-Ground 1.0000528  
 FIELD BOOK Koshkonong p. 286  
 DRAWN BY TRW



### BASIS FOR MONUMENTATION

Original Survey, 1834-37, Wood Post set in marsh  
 1871, Resurvey of Milton Township, Limestone Monuments  
 were set. Ref. Rock County Surveyors Office.  
 1886, Resurvey of Koshkonong Township, Limestone  
 Monuments were set, Milton Stone was found. Field  
 notes recorded in Reg. of Deeds, Misc. Vol 1, p.389-412  
 1990's, The meander corner was searched for but not  
 found. The Lake has expanded about 500' since the  
 Resurveys.  
 2/2002, I re-established corner position by projecting  
 the Bearing between S $\frac{1}{4}$ -34 and SW-34 to the Lake.  
 The stone to N $\frac{1}{4}$ -33 has not been found, being under  
 water. I set an Iron Pipe Meander Corner on the west  
 side of a gravel road. Also set an iron pipe on the  
 Township line on the eastside of the road. Assigned  
 G.P.S coordinates, using a Topcon GP-SX1, single-  
 frequency receiver.

SEAL:



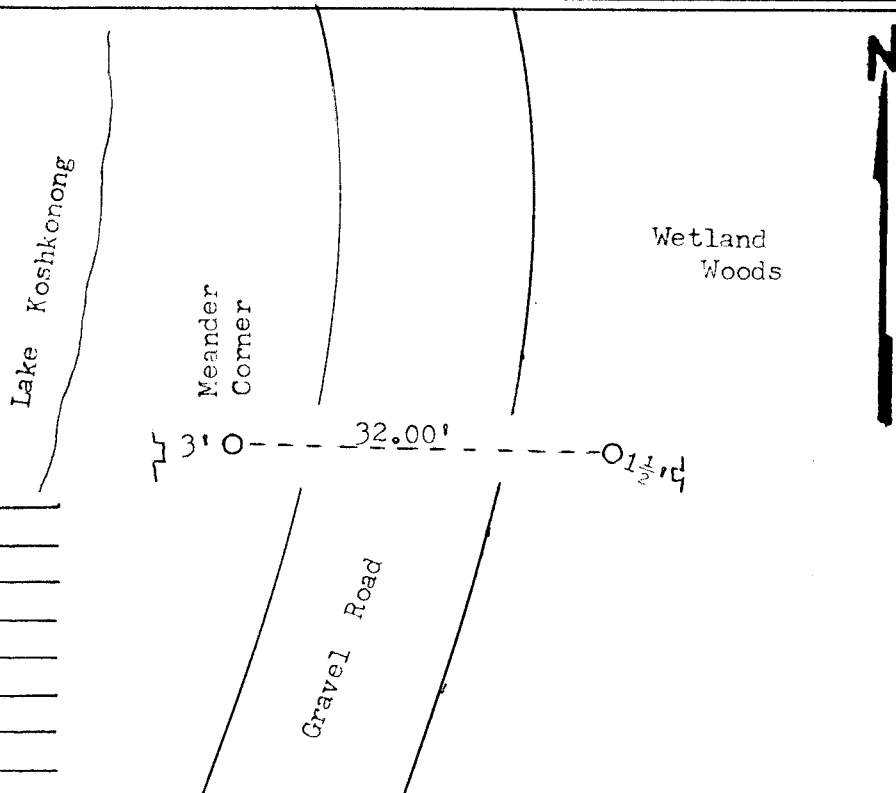
DATA SHOWN HERE ON  
 CERTIFIED CORRECT:

*Thomas R. Wollin*  
 REGISTERED LAND SURVEYOR

DATED 2/19/2002

### LOCATION SKETCH

- SQUARE CUT LIMESTONE
- CONCRETE / BRASS CAP
- ALUMINUM MAGNETIZED
- IRON PIPE 1 $\frac{1}{4}$ " by 30"
- STEEL "T" BAR STAKE
- PK NAIL
- FENCE
- UTILITY POLE
- Plastic Sign Post



### MAINTENANCE RECORD

DATE	INIT.	REMARKS