

U.S. PUBLIC LAND SURVEY MONUMENT RECORD

For Public Land Survey Corners In: WI ADMINISTRATIVE CODE A-E 7.08 REQUIREMENT

T. 3 N. - R. 10 E. of the 4th P.M.

CORNER CODE INDEX

(PLACE "◆" SYMBOL AT PROPER PLSS CORNER LOCATION)

	1	2	3	4	5	6	7	8	9	10	11	12	13	14	15	16	17	18	19	20	21	22	23	24	25		
A																											A
B																											B
C																											C
D																											D
E																											E
F																											F
G																											G
H																											H
J																											J
K																											K
L																											L
M																											M
N																											N
O																											O
P																											P
Q																											Q
R																											R
S																											S
T																											T
U																											U
V																											V
W																											W
X																											X
Y																											Y
Z																											Z
	1	2	3	4	5	6	7	8	9	10	11	12	13	14	15	16	17	18	19	20	21	22	23	24	25		

MAGNOLIA TWP
ROCK COUNTY WI

COORDINATES

(GNSS DERIVED VIA WISCORS)

NORTHING: 291648.52 ELEV: _____

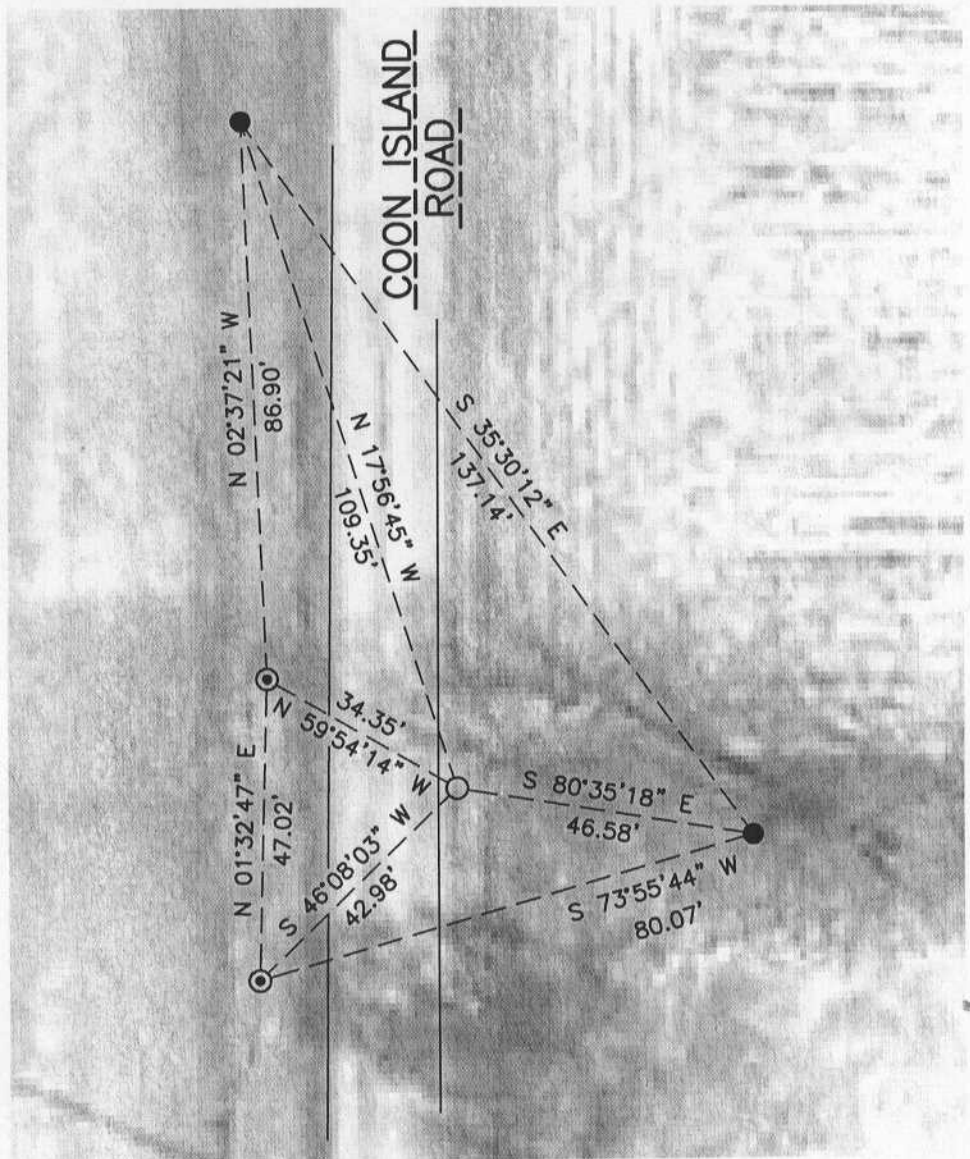
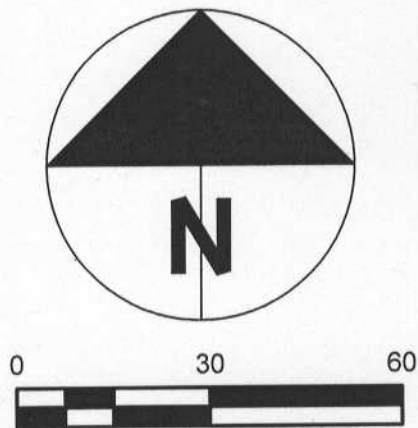
EASTING: 429663.09

Hor. Datum: WCCS-ROCK, NAD83 (NA2011)

Vertical Datum: NAVD 88, (If applicable)

(a) LEGEND

- - 5/8" x 24" REBAR SET, (RED CAP W/"PLSS WITNESS")
- - ALUMINUM MONUMENT SET. REPLACES BROKEN MONUMENT FOUND/SURVEYED/REMOVED
- ⊙ - DISTURBED IRON REBAR FOUND & RESET



SHEET 1 OF 2

MAGNOLIA 3
FIELD BOOK 2013 PAGE # _____

CORNER CODE E-23(1)

B) Describe any record evidence, monument evidence, occupational evidence, testimonial evidence or any other material evidence you considered, and whether the monument was found or placed.

I found the aluminum monument near the edge of pavement and listened for the magnetic pull of the erroneous monument to the East. The correct monument has been disturbed and is also broken off. Upon excavating, the base of the monument was found to be intact. The "T" of the broken monument was surveyed and I set a new aluminum monument in its place. Much work has occurred in this area since the 1994 tie-sheet, (E-23), and all ties were either missing or disturbed. The new aluminum was set 2-3" below grade and witnessed per the sketch.

C) Was the corner restored through acceptance of (1) an obliterated evidence location, or, (2) a found perpetuated location?

Accepted found location of the base of a broken aluminum monument.

D) Describe any material discrepancy between the location of the corner as restored or reestablished and the location of that corner as previously restored or reestablished by distance and direction. Show the discrepancy on the plan view drawing under (a), above. Show the distances between the corner as previously restored or reestablished and (1) the corner as restored or reestablished, and (2) to at least 4 of the witness monuments shown on the drawing in (a), above.

N/A

(E) Was the corner reestablished through lost corner proportionate methods? If so, show the method, including the directions and distances to other public land survey corners used as evidence or used for proportioning the corner location.

N/A

I, Jason R. Houle, hereby certify that the corner location as identified by the corner code index was determined by me under my direction and control and that this U.S. Public Land Survey Monument Record is correct and complete to the best of my knowledge and belief.

CORNER CODE: E-23(1)
(A.E. 7.08 REQUIREMENT)

