

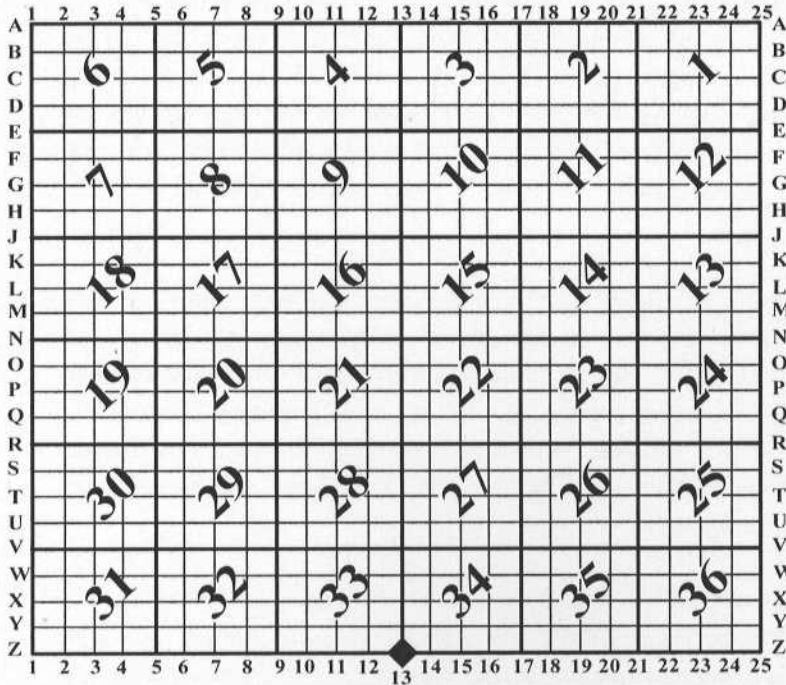
# U.S. PUBLIC LAND SURVEY MONUMENT RECORD

For Public Land Survey Corners In: WI ADMINISTRATIVE CODE A-E 7.08 REQUIREMENT

T. 3 N. - R. 10 E. of the 4th P.M.

CORNER CODE INDEX

(PLACE "◆" SYMBOL AT PROPER PLSS CORNER LOCATION)



MAGNOLIA TWP  
ROCK COUNTY WI

**COORDINATES**

(GNSS DERIVED VIA WISCORS)

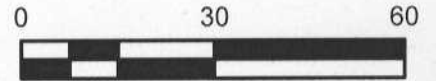
NORTHING: 265296.89      ELEV: N/A  
EASTING: 416684.97

Hor. Datum: WCCS-ROCK, (NA2011)

Vertical Datum: NAVD 88, (If applicable)

**(a) LEGEND**

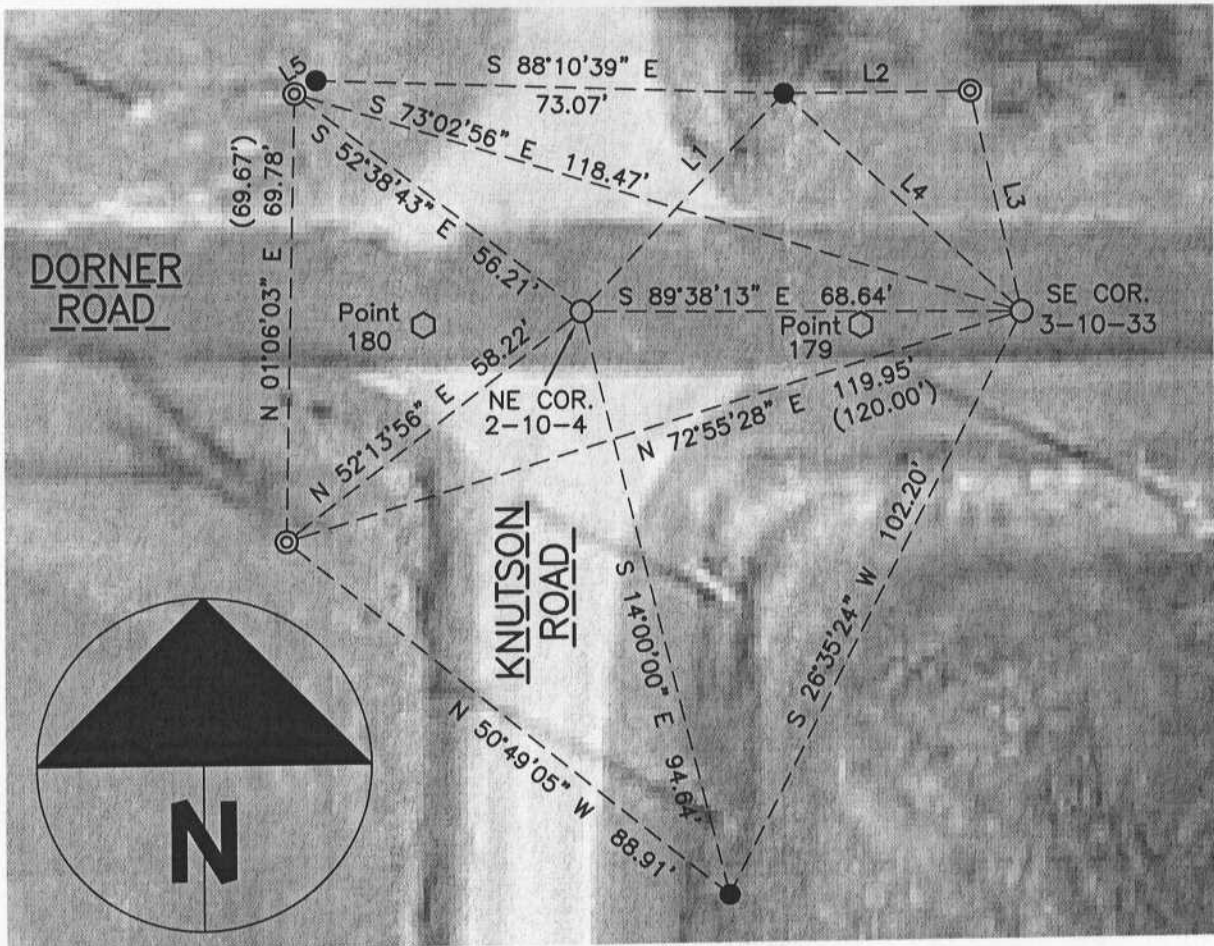
- - 5/8" x 24" REBAR SET, (RED CAP W/"PLSS WITNESS")
- - COTTON GIN SPINDLE SET
- ⊙ - IRON PIPE FOUND
- (#) - PREVIOUS TIE-SHEET DIMENSION
- ⬡ - ALUMINUM MON. FOUND



LINE	BEARING	DISTANCE
L1	N 43°06'28" E	46.34'
L2	N 89°29'50" E	28.95'
L3	S 13°04'50" E	35.44'
L4	S 47°10'29" E	50.41'
L5	N 58°16'59" E	3.90'

POINT TABLE

Point	Northing	Easting	Notes
179	265294.97	416660.00	ALUM, (LEE)
180	265295.32	416591.63	ALUM CORRODED, (LEE)



Field book: Magnolia 2013

Page: 28

Page 1 of 2

Corner code: Z-13(2)

***B) Describe any record evidence, monument evidence, occupational evidence, testimonial evidence or any other material evidence you considered, and whether the monument was found or placed.***

The most recent tie-sheet filed for this corner is Z-13(1) filed on January 13, 2011, (Barnes). That particular sheet was essentially the verification of information shown on a 1990 tie-sheet for the same, (Barnes). The 1990 tie-sheet disagrees with found aluminum monuments that were tied off by Lee in 1973. The basis of Barnes interpretation is found stones at the NE corner of Section 4, Spring Valley, (Ruger 1874). Based on Barnes finding Ruger stones, I (1) tied together the monuments on the Z-13(1) tie-sheet, (2) computed the corner locations and (3) set cotton gin spindles at the corners, (SE 33 – Magnolia, NE 4 – Spring Valley). Three additional offsets were set in addition to those found.

During the course of fieldwork for the preparation of both of his tie-sheets, Barnes never set any corners on the surface at either the SE of 33 or NE of 4. The number of surveys that this impacts is not known; additionally, Barnes indicates his belief that one of his random traverse nails was used as a section corner, (NE – 4), on a survey filed in 1992. A review of the most recent tie-sheet reveals the fact that no new fieldwork was completed in 2011; the 2011 sheet reviews and details the situation and uses old traverse data to compute locations of the corners. The Barnes positions more closely match the location of the N/S roads and ROW in the area.

Regarding the SE corner of 33-3-10, I contemplated the options for establishing this corner. The fact that a corner has never existed, (modern times), introduced the temptation to accept the Lee monuments. However, Barnes finding Ruger's stones at the NE of Section 4 gave me the confidence to set a cotton gin spindle at the corner and supports my opinion that it is based on the best available evidence of the original PLSS corner, (1833).

***C) Was the corner restored through acceptance of (1) an obliterated evidence location, or, (2) a found perpetuated location?***

A found perpetuated location based on Barnes finding Ruger's stones from 1833.

***D) Describe any material discrepancy between the location of the corner as restored or reestablished and the location of that corner as previously restored or reestablished by distance and direction. Show the discrepancy on the plan view drawing under (a), above. Show the distances between the corner as previously restored or reestablished and (1) the corner as restored or reestablished, and (2) to at least 4 of the witness monuments shown on the drawing in (a), above.***

I accepted the most recent tie-sheets rationale for the section corner location. Past tie-sheets detail the history of the corner in depth and explain the substantial differences in corner locations.

***(E) Was the corner reestablished through lost corner proportionate methods? If so, show the method, including the directions and distances to other public land survey corners used as evidence or used for proportioning the corner location.***

N/A

*I, Jason R. Houle, hereby certify that the corner location as identified by the corner code index was determined by me under my direction and control and that this U.S. Public Land Survey Monument Record is correct and complete to the best of my knowledge and belief.*

**CORNER CODE: X-5**  
**(A.E. 7.08 REQUIREMENT)**

