

U.S. PUBLIC LAND SURVEY MONUMENT RECORD

For Public Land Survey Corners in:

WI ADMINISTRATIVE CODE A-E 7.08 REQUIREMENT

T. 3 N., R. 10 E

CORNER CODE INDEX

A	1	2	3	4	5	6	7	8	9	10	11	12	13	14	15	16	17	18	19	20	21	22	23	24	25
B	6																								
C		5																							
D																									
E																									
F																									
G	1																								
H		8																							
J																									
K																									
L	18																								
M		17																							
N																									
O																									
P	19																								
Q		20																							
R																									
S																									
T	30																								
U		29																							
V																									
W																									
X	31																								
Y		32																							
Z																									

MAGNOLIA TWP

ROCK COUNTY WI

IF AVAILABLE
ROCK COUNTY COORDINATES PREFERRED

North _____ Elev. _____

East _____

Hor. Datum _____ Vert. Datum _____

LATITUDE _____ ELLIPS. HT. _____

LONGITUDE _____

GPS (X) _____ TRAVERSE (X) _____

BASED ON THE FOLLOWING CONTROL:

PLACE MONUMENT SYMBOL AT PROPER LOCATION ON ABOVE INDEX

CORNER MONUMENT

WITNESS MONUMENT

(a)

BEARINGS ARE BASED ON: _____

FIELD BOOK _____ PAGE # _____

SHEET 1 OF 3

SHOW A PLAN VIEW DRAWING DEPICTING THE CORNER MONUMENT AND SURROUNDING PHYSICAL FEATURES, INCLUDING THE EXCAVATION AREA AND DEPTH.

PLANNING & ZONING COMMITTEE ADOPTED THE ABOVE FORM ON 12/2/1982

CORNER CODE 2-19(2)

MA630

(B) Describe any record evidence, monument evidence, occupational evidence, testimonial evidence or any other material evidence you considered, and whether the monument was found or placed.

1858 CHURCH VOL 1 PG 84 STATES NOTHING ABOUT CORNER. USED TO SUBDIVIDE SEC 35. CALLS FOR 2646.93 TO CENTER OF SEC 35, 5294.19 TO N 1/4 COR SEC 35 & 2601.72 TO SW COR SEC 35.

1881 LEE VOL 2 PG 335 1/4 COR LOST. ESTABLISHED IT MIDWAY & ON LINE BETWEEN THE SE & SW CORNERS OF SEC 35. SET A HH 14X12X9.

1968 BATTERMAN VOL 4 PG 362 FOUND HH 14X12X9 3' DEEP & REFERENCED SAME.

1988 BARNES Z-19 PLACED REFERENCE MONUMENTS. REPLACED ONLY FOUND SE REFERENCE PIPE WITH REROD.

PLACED 3/4X24 REROD MIDWAY & ON LINE WITH SW & SE CORNERS OF SEC 35. THIS IS IN HARMONY WITH LEE'S 1881 SURVEY AND BATTERMAN'S SE REFERENCE MONUMENT.

C) Was the corner restored through acceptance of (1) an obliterated evidence location, or, (2) a found perpetuated location?

ACCEPTED OBLITERATED EVIDENCE LOCATION.

D) Describe any material discrepancy between the location of the corner as restored or reestablished and the location of that corner as previously restored or reestablished by distance and direction. Show the discrepancy on the plan view drawing under (a), above. Show the distances between the corner as previously restored or reestablished and (1) the corner as restored or reestablished, and (2) to at least 4 of the witness monuments shown on the drawing in (a), above.

(E) Was the corner reestablished through lost corner proportionate methods? If so, show the method, including the directions and distances to other public land survey corners used as evidence or used for proportioning the corner location.

I, Donald Barnes, hereby certify that the corner location as identified by the corner code index was determined by me under my direction and control and that this U.S. Public Land Survey Monument Record is correct and complete to the best of my knowledge and belief.

Donald Barnes
seal

April 21, 1998

Number of included sheets _____

emboss

A-E 7.08 REQUIREMENT

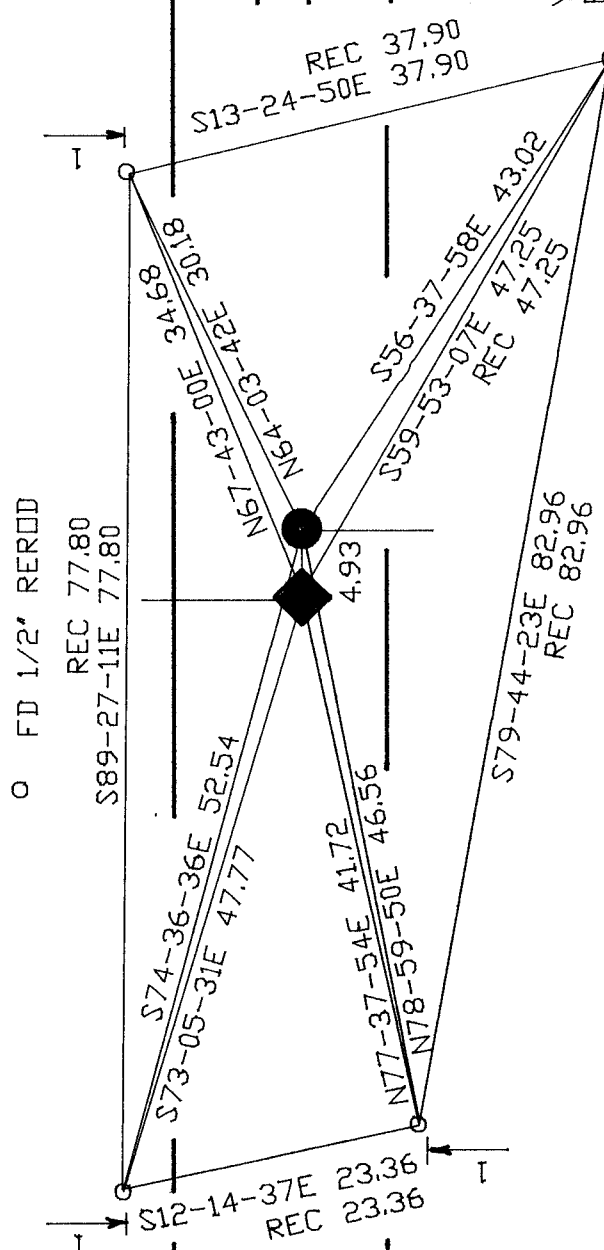
CORNER CODE

2-19(2)

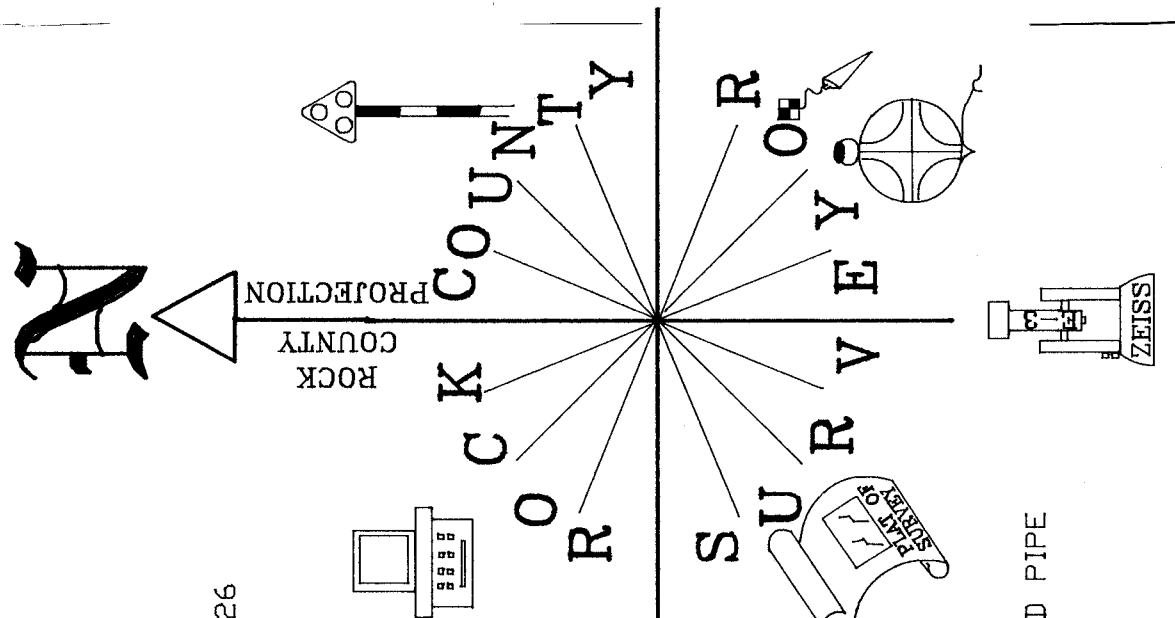
Dwight Barnes
 EMBOSSED SEAL
 APRIL 21, 1998

MAGNOLIA TWP Z-19
 MAGNOLIA TWP BK 3 PG 26
 SPRING VALLEY BK # 3
 PG 16, & 71

- N 1/4 COR SEC 2 3/4X24 REROD
- ◆ S 1/4 COR SEC 35 3/4X24 REROD
MAGNOLIA TWP
- FD 1/2" REROD

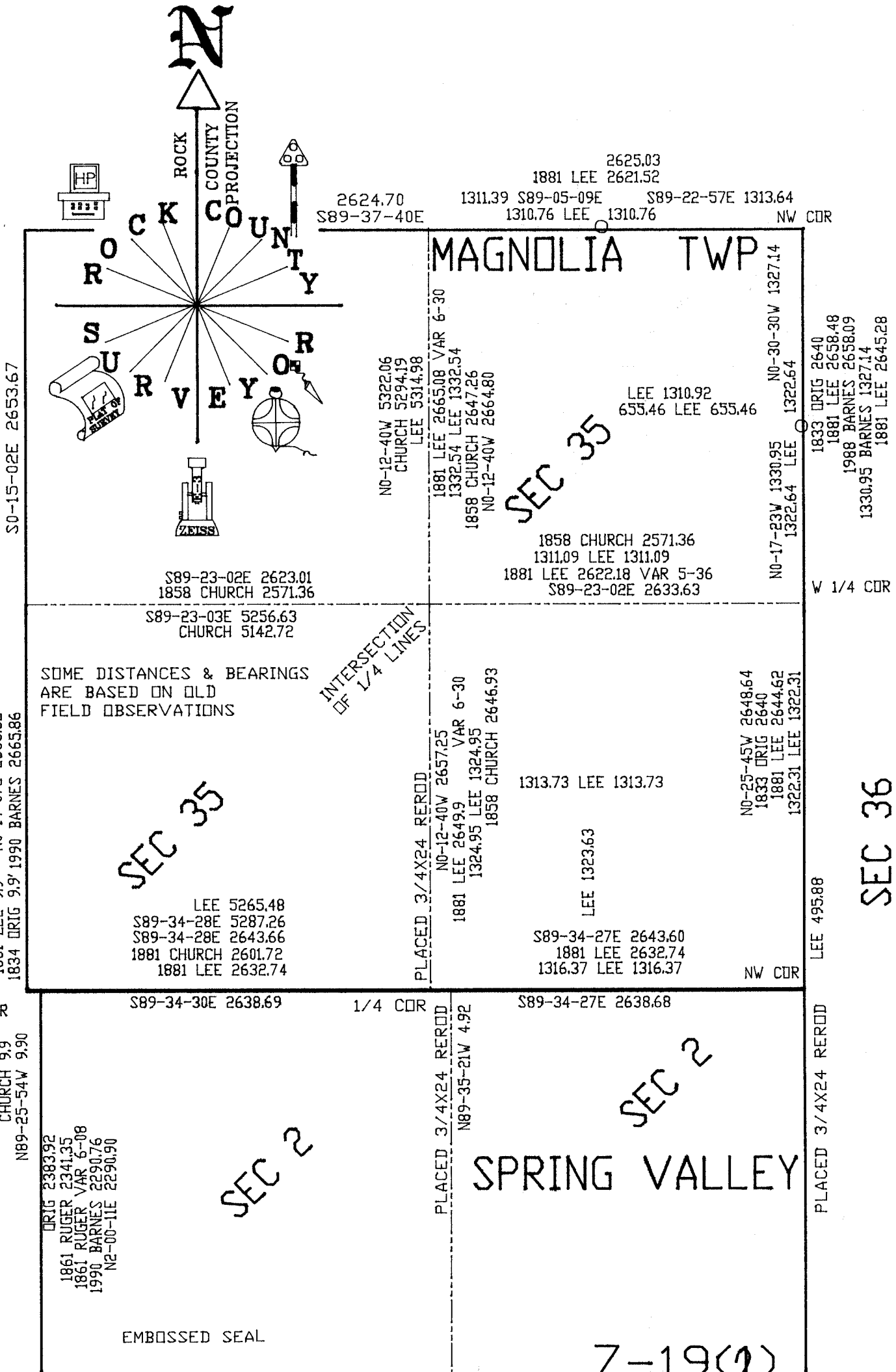


YEARS AGO FOUND DISTURBED PIPE
 REPLACED WITH REROD
 UP #4B2W1



DORNER RD

Z-19(2)



S0-15-02E 2653.67

1881 LEE 9.9 NO-14-07E 2665.82
1834 ORIG 9.9 1990 BARNES 2665.86

SW COR

NW COR

ORIG 9.9
CHURCH 9.9
N89-25-54W 9.90

ORIG 2383.92
1861 RUGER 2341.35
1861 RUGER VAR 6-08
1990 BARNES 2290.76
N2-00-11E 2290.90

EMBOSSSED SEAL

SEC 35

LEE 5265.48
S89-34-28E 5287.26
S89-34-28E 2643.66
1881 CHURCH 2601.72
1881 LEE 2632.74

SOME DISTANCES & BEARINGS
ARE BASED ON OLD
FIELD OBSERVATIONS

S89-23-03E 5256.63
CHURCH 5142.72

S89-23-02E 2623.01
1858 CHURCH 2571.36

INTERSECTION
OF 1/4 LINES

2624.70 S89-37-40E
2625.03 1881 LEE 2621.52
1311.39 S89-05-09E S89-22-57E 1313.64
1310.76 LEE 1310.76 NW COR

MAGNOLIA TWP

NO-12-40W 5322.06
CHURCH 5294.19
LEE 5314.98

1881 LEE 2665.08 VAR 6-30
1332.54 LEE 1332.54
1858 CHURCH 2647.26
NO-12-40W 2664.80

SEC 35

LEE 1310.92
655.46 LEE 655.46

1858 CHURCH 2571.36
1311.09 LEE 1311.09
1881 LEE 2622.18 VAR 5-36
S89-23-02E 2633.63

NO-30-30W 1327.14
NO-17-23W 1330.95
1322.64 LEE 1322.64

1833 ORIG 2640
1881 LEE 2658.48
1988 BARNES 2658.09
1330.95 BARNES 1327.14
1881 LEE 2645.28

W 1/4 COR

PLACED 3/4X24 REROD

NO-12-40W 2657.25
VAR 6-30
1881 LEE 2649.9
1324.95 LEE 1324.95
1858 CHURCH 2646.93

1313.73 LEE 1313.73

LEE 1323.63

S89-34-27E 2643.60
1881 LEE 2632.74
1316.37 LEE 1316.37

NO-25-45W 2648.64
1833 ORIG 2640
1881 LEE 2644.62
1322.31 LEE 1322.31

LEE 495.88

PLACED 3/4X24 REROD

S89-34-30E 2638.69

1/4 COR

S89-34-27E 2638.68

SEC 2

PLACED 3/4X24 REROD

N89-35-21W 4.92

SEC 2

SPRING VALLEY

Z-19(2)