

U.S. PUBLIC LAND SURVEY MONUMENT RECORD

For Public Land Survey Corners in:

WI ADMINISTRATIVE CODE A-E 7.08 REQUIREMENT

T. 3 N., R. 10 E

CORNER CODE INDEX

A	1	2	3	4	5	6	7	8	9	10	11	12	13	14	15	16	17	18	19	20	21	22	23	24	25
B																									
C	6																								
D																									
E																									
F																									
G	7																								
H																									
I																									
J																									
K																									
L	13																								
M																									
N																									
O																									
P	19																								
Q																									
R																									
S																									
T	30																								
U																									
V																									
W																									
X	31																								
Y																									
Z																									

MAGNOLIA TWP

ROCK COUNTY WI

IF AVAILABLE
ROCK COUNTY COORDINATES PREFERRED

North _____ Elev. _____

East _____

Hor. Datum _____ Vert. Datum _____

LATITUDE _____ ELLIPS. HT. _____

LONGITUDE _____

GPS (X) _____ TRAVERSE (X) _____

BASED ON THE FOLLOWING CONTROL:

PLACE MONUMENT SYMBOL AT PROPER LOCATION ON ABOVE INDEX

CORNER MONUMENT

WITNESS MONUMENT

(a)

BEARINGS ARE BASED ON:

FIELD BOOK _____ PAGE # _____

SHEET 1 OF 3

SHOW A PLAN VIEW DRAWING DEPICTING THE CORNER MONUMENT AND SURROUNDING PHYSICAL FEATURES, INCLUDING THE EXCAVATION AREA AND DEPTH.

PLANNING & ZONING COMMITTEE ADOPTED THE ABOVE FORM ON 12/2/1982

CORNER CODE 2-21(2)

MA631

(B) Describe any record evidence, monument evidence, occupational evidence, testimonial evidence or any other material evidence you considered, and whether the monument was found or placed.

- 1833 MULLETT VAR 7-40E
WEST ON SOUTH SIDE SEC 36
2640 SET QUARTER SEC POST
BUR OAK 9 N29W 70.62'
RUB OAK 6 N42E 163.02'
2970 ENTER PRAIRIE
5280 SET POST CORNER SECTIONS 35 & 36
IN PRAIRIE AND MADE A MOUND
ON EAST SIDE SEC 35
2640 SET QUARTER SEC POST IN PRAIRIE & MADE A MOUND
5280 SET POST CORNER SECTS 34 & 35 IN PRAIRIE & MADE A MOUND.
- 1833 HARRISON NORTH BETWEEN SEC 35 & 36
990 LEAVE PRAIRIE
1987.92 BROOK 3 CRS E
2277 RED OAK
2640 QUARTER SEC COR.
HICKY 8 S87E 9.9'
WHITE OAK 20 S67W 52.8'
3109.92 RED OAK 12 IN DIA
5280 COR TO SECS 25 26 35 36
BUR OAK 12 N46E 172.26'
BUR OAK 12 S68E 116.16'
BUR OAK 12 N45W 310.2'
RED OAK 10 S88W 283.14'
- 1868 LOCKE VOL 1 VOL 322 STATES NOTHING ABOUT CORNER. CALLS FOR
2616.90 TO N 1/4 COR SEC 1 & 2302.74 TO W 1/4 COR SEC 1.
- 1874 RUGER VOL 2 PG 130 FOUND COR SET BY LOCKE. 1120.52 SOUTH TO
PROPERTY COR., 2232.78 TO W 1/4 COR W 1/4 COR SEC 1, & 2610.92 TO
N 1/4 COR SEC 1.
- 1880 LEE VOL 2 PG 313 FOUND COR SET BY LOCKE. 1729.53 SOUTH TO
PROPERTY COR & 2306.04 TO W 1/4 COR SEC 1.
- 1881 LEE VOL 2 PG 335 FOUND STAKE & STONES SET BY LOCKE CALLS FOR
495.88 NORTH TO PROPERTY COR., 2632.74 TO S 1/4 COR SEC 35 &
2644.62 TO E 1/4 COR SEC 35.
- 1988 BARNES VOL 6 PG CALLS FOR LEE'S SURVEY 1881 & DISTANCE 2632.74 TO
S 1/4 COR SEC 35 AND 2644.62 TO E 1/4 COR SEC 35.
- 1989 BARNES Z-21(1) LIMITS OF 3' DEEP HOLE. FOUND OLD REMAINS OF
EXCAVATION OF SOUTH SIDE OF HOLE. 2645.3 FROM CENTER OF HOLE TO W
1/4 COR SEC 36 & 5281.2 FROM CENTER TO NE COR SEC 1.

ESTABLISHED CORNER AT INTERSECTION OF PAVEMENT. THIS IS IN HARMONY
WITH RECORD DISTANCES AND OCCUPATION AS SHOWN IN SECTION DIAGRAM.

C) Was the corner restored through acceptance of (1) an obliterated
evidence location, or, (2) a found perpetuated location?

RESTORED CORNER THROUGH ACCEPTANCE OF OBLITERATED EVIDENCE LOCATION.

D) Describe any material discrepancy between the location of the
corner as restored or reestablished and the location of that corner as
previously restored or reestablished by distance and direction. Show
the discrepancy on the plan view drawing under (a), above. Show the
distances between the corner as previously restored or reestablished
and (1) the corner as restored or reestablished, and (2) to at least 4
of the witness monuments shown on the drawing in (a), above.

(E) Was the corner reestablished through lost corner proportionate
methods? If so, show the method, including the directions and
distances to other public land survey corners used as evidence or used
for proportioning the corner location.

I, Donald Barnes, hereby certify that the corner location as identified
by the corner code index was determined by me under my direction and
control and that this U.S. Public Land Survey Monument Record is
correct and complete to the best of my knowledge and belief.

seal

Donald Barnes

emboss

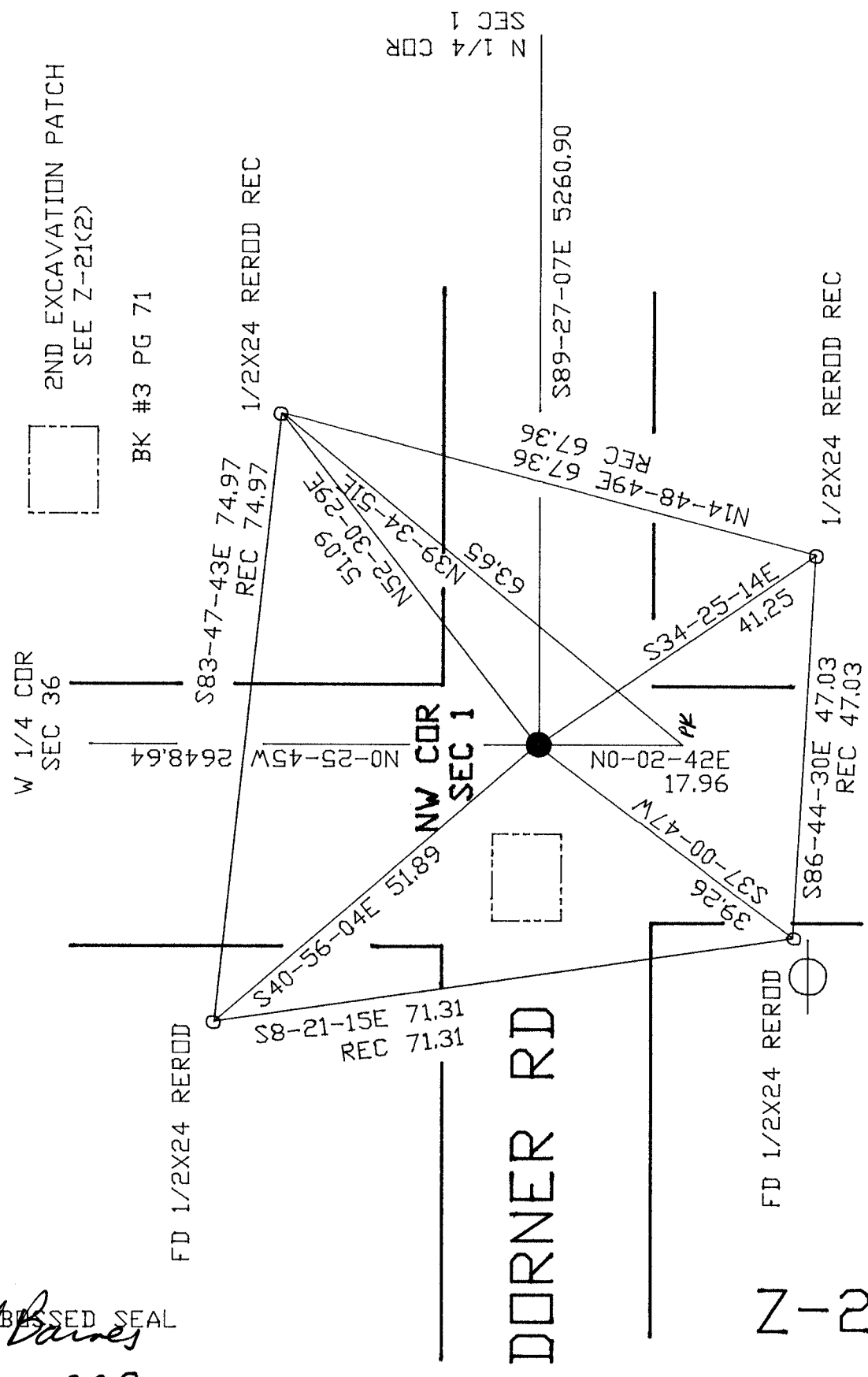
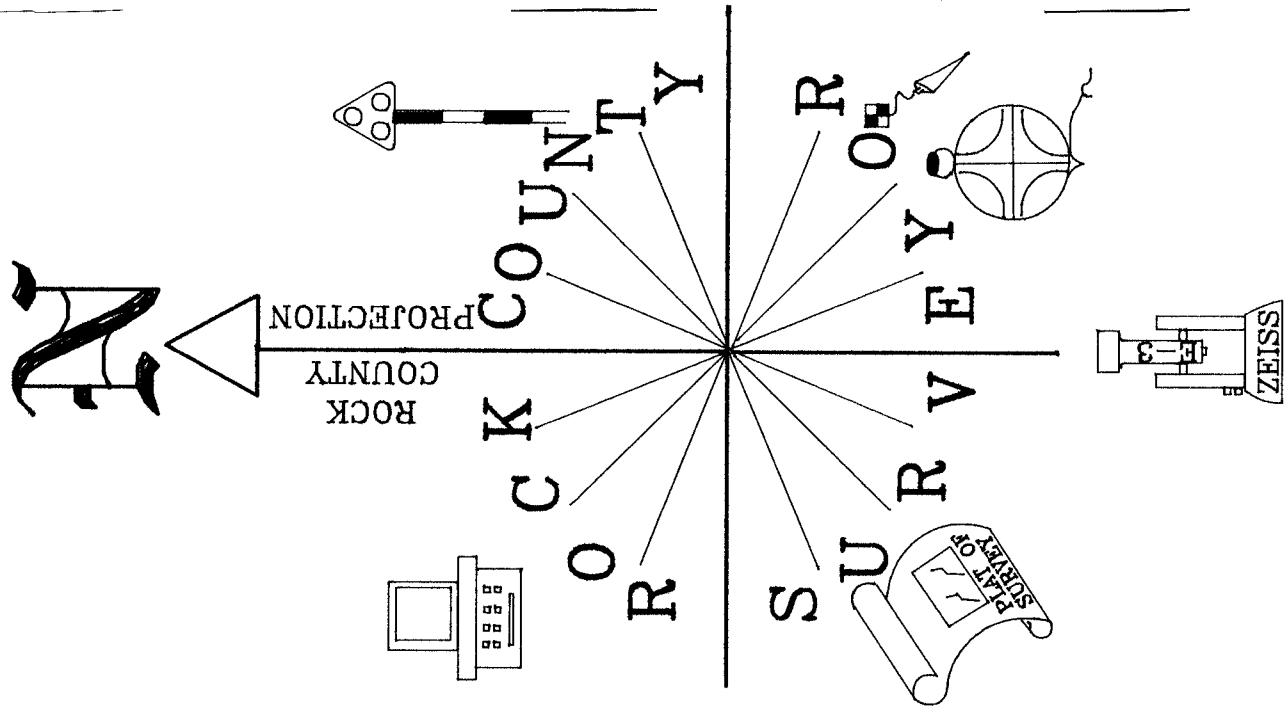
APRIL 22, 1995

Number of included sheets _____

A-E 7.08 REQUIREMENT

CORNER CODE Z-21(2)

Donald Barnes
 EMBOSSED SEAL
 APRIL 22, 1998



TOLLEFSON RD

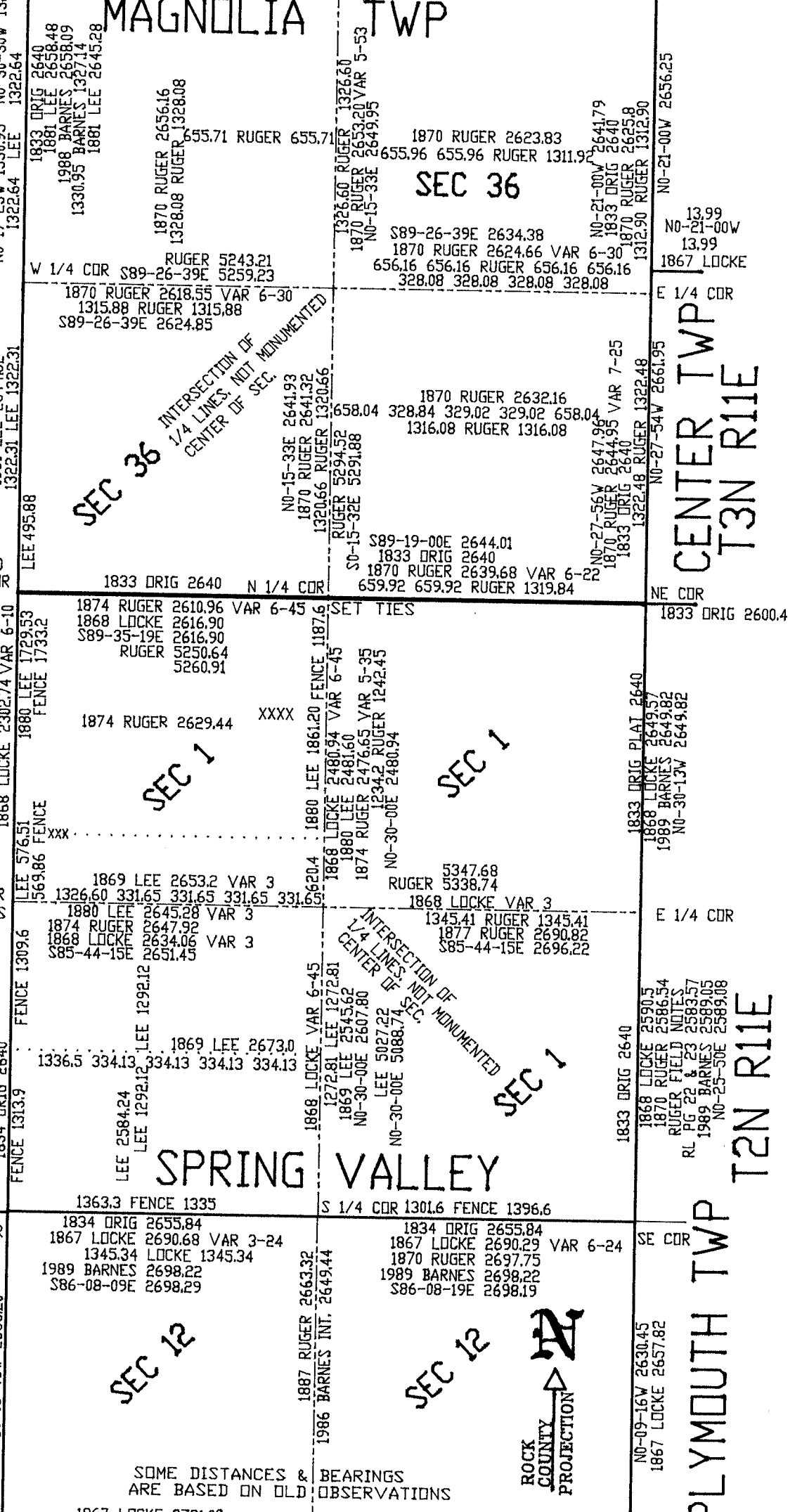
DORNER RD

Z-21(2)

S89-16-10E 2631.46
 1833 DRIG 2610.3
 1870 RUGER 2620.2
 1310.10 RUGER 655.05 655.05

S89-15-55E 2630.32
 1833 DRIG 2610.3
 1870 RUGER 2625.8
 656.45 656.45 RUGER 1312.90

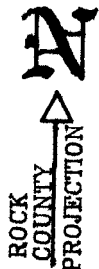
LOCKE 28.38
 NO-20-57W 28.45
 1833 DRIG 28.38'



SEC 35
 SEC 35
 SEC 2
 SEC 1
 SEC 1
 SEC 1
 SEC 12
 SEC 12

MAGNOLIA TWP
 CENTER TWP
 T3N R1E
 CENTER TWP
 T2N R1E
 PLYMOUTH TWP

SOME DISTANCES & BEARINGS ARE BASED ON OLD OBSERVATIONS



EMBOSSED SEAL

Donald Barnes
 Apr. 22, 1998

Z-21(2)