

U.S. PUBLIC LAND SURVEY MONUMENT RECORD

For Public Land Survey Corners in:

WI ADMINISTRATIVE CODE A-E 7.08 REQUIREMENT

T. 3 N., R. 10 E

CORNER CODE INDEX

MAGNOLIA TWP

ROCK COUNTY WI

IF AVAILABLE
ROCK COUNTY COORDINATES PREFERRED

A	1	2	3	4	5	6	7	8	9	10	11	12	13	14	15	16	17	18	19	20	21	22	23	24	25
B																									
C	6																								
D																									
E																									
F	1																								
G		8																							
H																									
I																									
J																									
K	18																								
L		11																							
M																									
N																									
O																									
P	19																								
Q		20																							
R																									
S																									
T	30																								
U		29																							
V																									
W																									
X	31																								
Y		32																							
Z																									

North _____ Elev. _____

East _____

Hor. Datum _____ Vert. Datum _____

LATITUDE _____ ELLIPS. HT. _____

LONGITUDE _____

GPS (X) _____ TRAVERSE (X) _____

BASED ON THE FOLLOWING CONTROL:

PLACE MONUMENT SYMBOL AT PROPER LOCATION ON ABOVE INDEX

CORNER MONUMENT

WITNESS MONUMENT

(a)

BEARINGS ARE BASED ON:

FIELD BOOK _____ PAGE # _____

SHEET 1 OF 7

SHOW A PLAN VIEW DRAWING DEPICTING THE CORNER MONUMENT AND SURROUNDING PHYSICAL FEATURES, INCLUDING THE EXCAVATION AREA AND DEPTH.

PLANNING & ZONING COMMITTEE ADOPTED THE ABOVE FORM ON 12/2/1982

CORNER CODE V-21(1)

MA611

(B) Describe any record evidence, monument evidence, occupational evidence, testimonial evidence or any other material evidence you considered, and whether the monument was found or placed.

- 1867 LOCKE VOL 1 PG 279 FD BTS. SET SANDSTONE 8X8X4. VAR 6-40 2625.48 TO S 1/4 COR SEC 25 & VAR 8-05 2660.46 TO W 1/4 COR SEC 25
- 1868 LOCKE VOL 1 PG 326 FD BTS AND CORNER AS SET BY SELF. SEE SEC 25. VAR 6-35 2622.84 TO S 1/4 COR SEC 26.
- 1868 LOCKE #2787 2625.48 TO S 1/4 COR SEC 26.
- 1870 RUGER VOL 2 PG 36 FD CORNER ESTABLISHED BY LOCKE. 2620.86 TO N 1/4 COR SEC 36.
- 1880 VOL 6 G 332 TERRITORIAL ROAD RECORDS N88 30W 1699.5' TO CENTER OF RD
- 1881 LEE VOL 2 PG 335 FD A SANDSTONE SET BY LOCKE
- 1938 SUNNY VOL 3 PG 392 DUG 5X5X3 DEEP AND FOUND NOTHING. ESTABLISHED CORNER BY PROPORTIONATE MEASUREMENT AND SET 2X36 PIPE.
- 1938 SUNNY #6297 SECTION CORNERS ORDERED BY ROCK COUNTY WY DEPARTMENT. SET 2X30 PIPE & REFERENCE TIES. SAME TIES AS IN VOL 3 PG 392
- 1938 SUNNY VOL 3 PG 392 EST. CORNER BY PROPPORTIONATE MEASUREMENT. SET 2X36" PIPE FOR COR. REF. SAME. REFERENCE TIES ARE TREES, UTILITY POLE, & 41.4 TO NE COR OF NEW CONC. BRIDGE & 47.9 TO SE COR OF NEW CONC. BRIDGE TO THE WEST. 34' NORTH OF E/W FENCE LINE & 31' SOUTH OF E/W FENCE LINE
- 1957 BATTERMAN VOL 3 PG 512 DUG & FD 8X8X5 SANDSTONE 2' DEEP. SET 2" PIPE
- 1967 BATTERMAN VOL 4 PG 303 FD PIPE 1329 +/- TO E 1/16TH COR OF NE 1/4 SEC 35 & 2658 +/- TO E 1/4 COR SEC 35.
- 1967 BATTERMAN VOL 4 PG 304 2640 +/- TO E 1/4 COR SEC 26.
- 1967 BATTERMAN VOL 4 PG 336 FD PIPE AND REFERENCED.
- 1986 BARNES VOL 6 PG 361 S89-54-25E 2630.76 TO S 1/4 COR SEC 25 & N1-16-49E 2666.52 TO E 1/4 COR SEC 26. CALLS FOR PRO 2631.8 TO S 1/4 COR SEC 25. STATES NOTHING ABOUT MON.
- 1988 BARNES VOL 6 PG 390 STATES NOTHING ABOUT MON. N1-15-14W 2666.52 TO E 1/4 COR SEC 26, S89-59-00W 1313.63 TO 1/16TH COR, 2624.99 TO S 1/4 COR SEC 26, S1-08-34E 1327.14 TO 1/16TH COR, & 2658.09 TO E 1/4 COR SEC 35
- 1988 BARNES V-21 COORDINATES 251,089.08; 2,196,684.22. FD 2" PIPE INSIDE MON. BOX
- 1996 LATHROP #9082 IRON PIPE. 2658.30 TO E 1/4 COR SEC 35 (PK)

FD 2" PIPE IN MON. BOX. BOX COVER IS GONE. TOP OF PIPE IS 0.8' BELOW PVMT. BOX IS ON LINE WITH CENTER LINE OF PVMT TO THE NORTH & SOUTH & 3.0 SOUTH OF THE CENTER LINE OF THE E/W PVMT. SET 1/2X9" REROD IN PIPE. TOP OF REROD IS AT THE SURFACE OF THE PVMT.

D. Barnes

6-9-04

SHEET 1 OF 4

CORNER CODE **V-21(1)**

MA611

C) Was the corner restored through acceptance of (1) an obliterated evidence location, or, (2) a found perpetuated location?

ACCEPTED FOUND BATTERMAN'S PERPETUATED LOCATION. SUNNY'S PIPE WAS PLACED BY PROPORTIONATE MEASUREMENT.

D) Describe any material discrepancy between the location of the corner as restored or reestablished and the location of that corner as previously restored or reestablished by distance and direction. Show the discrepancy on the plan view drawing under (a), above. Show the distances between the corner as previously restored or reestablished and (1) the corner as restored or reestablished, and (2) to at least 4 of the witness monuments shown on the drawing in (a), above.

THERE IS A DISCREPANCY WITH THE 2" PIPE THAT SUNNY PLACED IN 1938 AND THE 2" PIPE THAT BATTERMAN PLACED IN 1957. I ACCEPTED BATTERMAN'S PIPE BECAUSE HE FOUND THE STONE WHICH PERPETUATES THE LOCATION OF THE ORIGINAL GOVERNMENT POSITION.

(E) Was the corner reestablished through lost corner proportionate methods? If so, show the method, including the directions and distances to other public land survey corners used as evidence or used for proportioning the corner location.

NO

I, **Donald Barnes**, hereby certify that the corner location as identified by the corner code index was determined by me under my direction and control and that this U.S. Public Land Survey Monument Record is correct and complete to the best of my knowledge and belief.

Donald Barnes

Seal

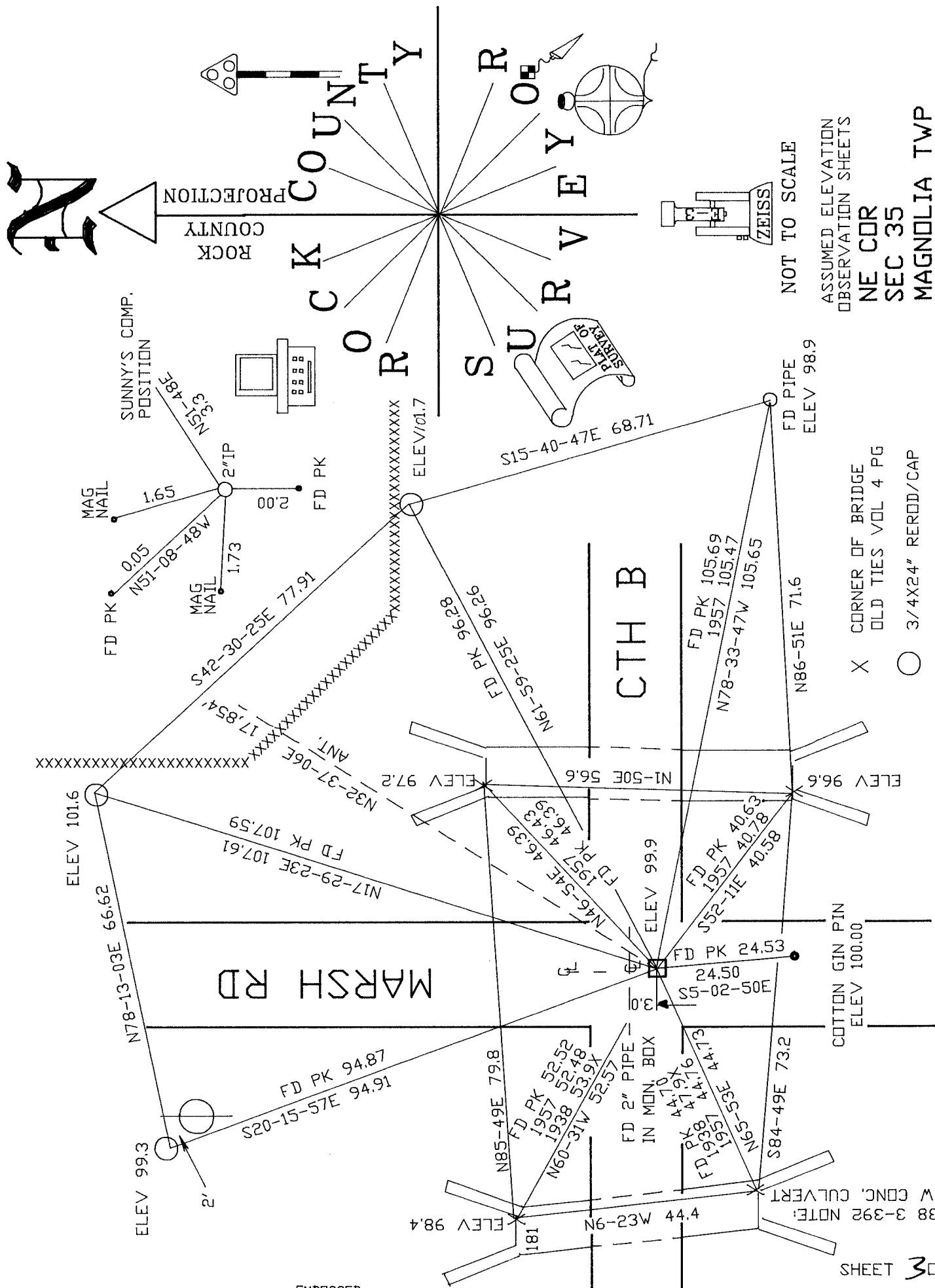
6-09-04

Emboss

SHEET 2 OF 4

CORNER CODE **V-21(1)**

A.E. 7.08 REQUIREMENT

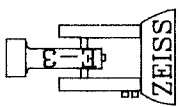


A

ROCK COUNTY PROJECTION

ROCK COUNTY

SURVEY



NOT TO SCALE

ASSUMED ELEVATION OBSERVATION SHEETS

NE CDR
SEC 35
MAGNOLIA TWP

X CORNER OF BRIDGE
OLD TIES VOL 4 PG
O 3/4X24" REROD/CAP

EMBOSSED SEAL
Dave Barnes
6-09-04

V-21(1)

SHEET 3 OF 4

1938 3-392 NOTE:
NEW CONC. CULVERT



ASSUMED NORTH

1/4 COR

1988 BARNES 6-390 N1-15-14W 2666.52
1986 BARNES 6-361 N1-16-49E 2666.52
1867 LOCKE 1-279 2660.46

SEC 26

1988 BARNES 6-390 179-42-04

1/4 COR

N89-43-04W 1311.36 1988 BARNES 6-390 S89-59-00W 1313.63
1868 LOCKE #2787 2625.48
1881 LEE 2-335 2621.52
1868 LOCKE 1-326 2622.84
1988 BARNES 6-390 2624.95

SEC 35

● 1/16TH COR

EMBOSSED SEAL *Donald E. ...*

6-09-04

SHEET 4 OF 4
V-21(1)

SEC 25
1988 BARNES V-21 251,089,081 2,196,684,22

1/4 COR

1870 RUGER 2-36 2620.86
1986 BARNES 6-361 S89-54-25E 2630.76
1986 BARNES 6-361 PRD 2631.8

SEC 36

1881 LEE 2658.48
1967 BATTERMAN 2658
1988 BARNES 2658.09
1996 LATHROP #9082 2658.30
S0-23-55E 2658.09

1988 BARNES 6-390 180-13-07
OLD PK DATA 180-13-08
INT. 180-12-46

1/4 COR

SHEET 4 OF 4