

# U.S. PUBLIC LAND SURVEY MONUMENT RECORD

For Public Land Survey Corners in:

WI ADMINISTRATIVE CODE A-E 7.08 REQUIREMENT

T. 3N., R. 10E

CORNER CODE INDEX

MAGNOLIA TWP

ROCK COUNTY WI

IF AVAILABLE  
ROCK COUNTY COORDINATES PREFERRED

A	1	2	3	4	5	6	7	8	9	10	11	12	13	14	15	16	17	18	19	20	21	22	23	24	25
B																									
C	6					5					A				3						2			1	
D																									
E																									
F																									
G	1					8					9				10						11			12	
H																									
I																									
J																									
K																									
L	18					11					16				15					14				13	
M																									
N																									
O																									
P	19					20					21				22					23				24	
Q																									
R																									
S																									
T	30					29					28				27					26				25	
U																									
V																									
W																									
X	31					32					33				34					35				36	
Y																									
Z																									

PLACE MONUMENT SYMBOL  AT PROPER LOCATION ON ABOVE INDEX

North \_\_\_\_\_ Elev. \_\_\_\_\_

East \_\_\_\_\_

Hor. Datum \_\_\_\_\_ Vert. Datum \_\_\_\_\_

LATITUDE \_\_\_\_\_ ELLIPS. HT. \_\_\_\_\_

LONGITUDE \_\_\_\_\_

GPS (X) \_\_\_\_\_ TRAVERSE (X) \_\_\_\_\_

BASED ON THE FOLLOWING CONTROL:

CORNER MONUMENT

WITNESS MONUMENT

(a)

BEARINGS ARE BASED ON:

FIELD BOOK \_\_\_\_\_ PAGE # \_\_\_\_\_

SHEET 1 OF 2

SHOW A PLAN VIEW DRAWING DEPICTING THE CORNER MONUMENT AND SURROUNDING PHYSICAL FEATURES, INCLUDING THE EXCAVATION AREA AND DEPTH.

PLANNING & ZONING COMMITTEE ADOPTED THE ABOVE FORM ON 12/2/1982

CORNER CODE 4-17(1)

MA558

(B) Describe any record evidence, monument evidence, occupational evidence, testimonial evidence or any other material evidence you considered, and whether the monument was found or placed.

1871 FOUND LIMESTONE AT CORNER. USED IT TO SUBDIVIDE SECTION 15.  
1930 BATTERMAN VOL 3 PG 167 FOUND LIMESTONE BY RUGER. LIMESTONE 4X8X12.  
REFERENCED SAME.  
1932 SUNNY VOL 3 PG 142 RESET MON IN CONC. PVMT. REFERENCES SAME. 18'  
CONC. HWY. 4.2' WEST OF CENTER OF PVMT. REFERENCED SAME.  
1968 BATTERMAN VOL 4 PG 360 FOUND 1" PIPE & REFERENCED SAME.  
1980 BARNES VOL 6 PG 49 N0-24-56W 2650.66 TO NW COR SEC 14 & S89-15-02E  
5276.61 TO E ¼ COR SEC 14.  
1985 DOT L-17 FD 1 INCH PIPE & REFERENCED SAME

0.8' DEEP FOUND 1 ¼ PIPE IN CONC. PVMT. PAVEMENT WILL BE DESTROYED.

(C) Was the corner restored through acceptance of (1) an obliterated evidence location, or, (2) a found perpetuated location?

ACCEPTED FOUND PIPE

(D) Describe any material discrepancy between the location of the corner as restored or reestablished and the location of that corner as previously restored or reestablished by distance and direction. Show the discrepancy on the plan view drawing under (a), above. Show the distances between the corner as previously restored or reestablished and (1) the corner as restored or reestablished, and (2) to at least 4 of the witness monuments shown on the drawing in (a), above.

(E) Was the corner reestablished through lost corner proportionate methods? If so, show the method, including the directions and distances to other public land survey corners used as evidence or used for proportioning the corner location.

I, Donald Barnes, hereby certify that the corner location as identified by the corner code index was determined by me under my direction and control and that this U.S. Public Land Survey Monument Record is correct and complete to the best of my knowledge and belief.

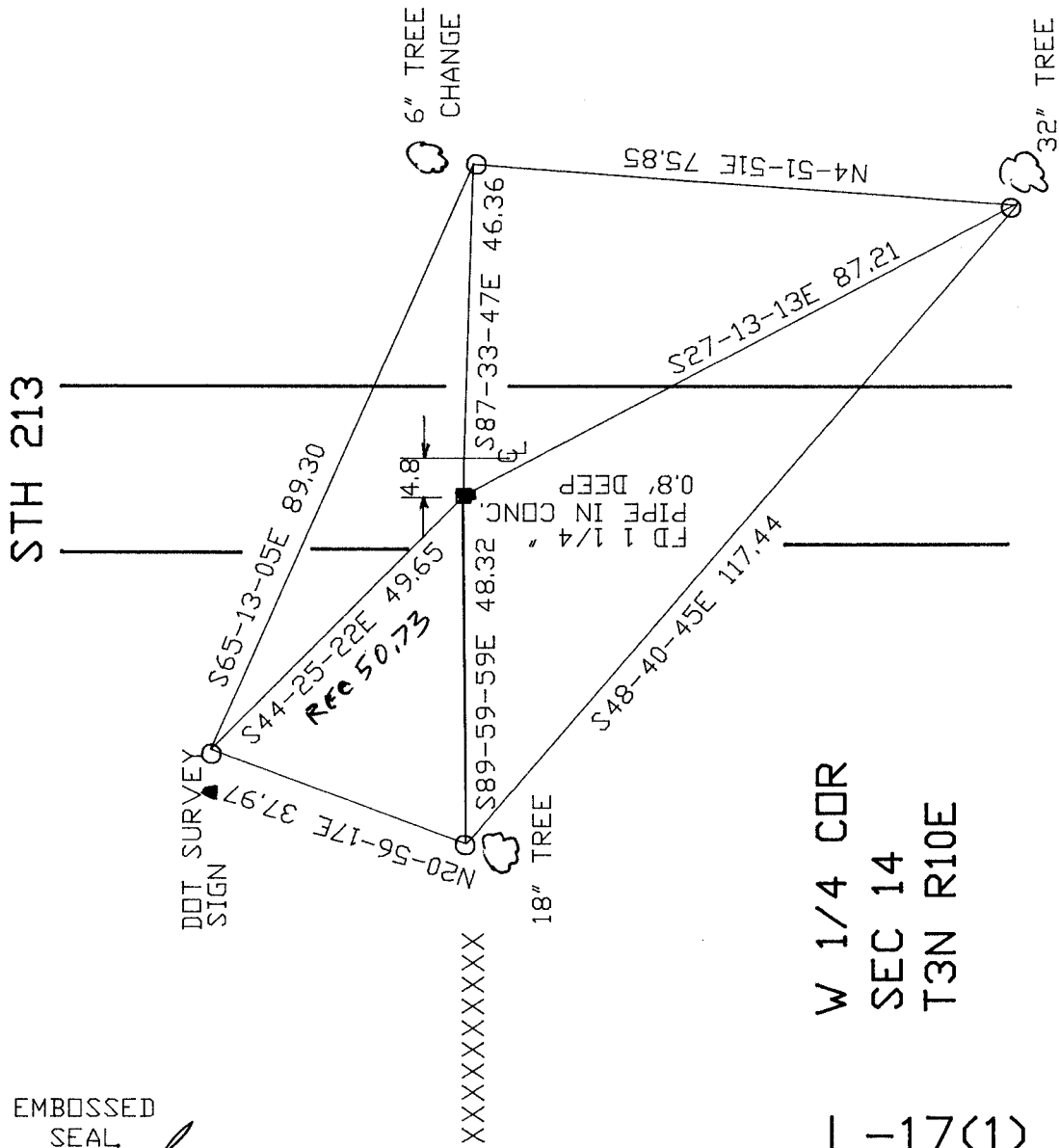
Seal  
Donald Barnes  
May 15, 20 00  
Emboss

Number of included sheets 1

CORNER CODE **L-17(1)**

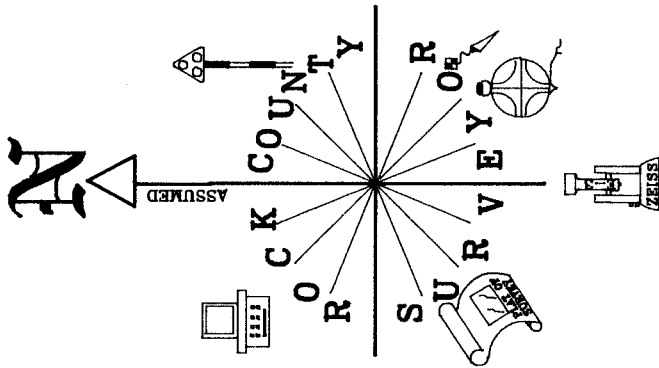
A-E 7.08 REQUIREMENT

EMBOSSSED  
SEAL  
*Ronald Barnes*  
May 15, 2000



W 1/4 CDR  
SEC 14  
T3N R10E

L-17(1)



OBSERVATION SHEET