

U.S. PUBLIC LAND SURVEY MONUMENT RECORD

For Public Land Survey Corners In:

WI ADMINISTRATIVE CODE A-E 7.08 REQUIREMENT

T. 3 N. R. 13 E.

CORNER CODE INDEX

A	1	2	3	4	5	6	7	8	9	10	11	12	13	14	15	16	17	18	19	20	21	22	23	24	25	A
B																										B
C	6						5				4				3			2				1				C
D																										D
E																										E
F																										F
G	7						8			9			10			11			12							G
H																										H
J																										J
K	18						17			16			15			14			13							K
L																										L
M																										M
N																										N
O																										O
P	19						20			21			22			23			24							P
Q																										Q
R																										R
S																										S
T	30						29			28			27			26			25							T
U																										U
V																										V
W	31						32			33			34			35			36							W
X																										X
Y																										Y
Z																										Z

HARMONY TWP
ROCK COUNTY WI

IF AVAILABLE
ROCK COUNTY COORDINATES PREFERRED

North _____ Elev. _____

East _____

Hor. Datum _____ Vert. Datum _____

LATITUDE _____ ELLIPS. HT. _____

LONGITUDE _____

GPS (X) _____ TRAVERSE (X) _____

BASED ON THE FOLLOWING CONTROL:

PLACE MONUMENT SYMBOL AT PROPER LOCATION ON ABOVE INDEX

CORNER MONUMENT

WITNESS MONUMENT

BEARINGS ARE BASED ON: _____

FIELD BOOK _____ PAGE # _____

SHEET 1 OF 3

SHOW A PLAN VIEW DRAWING DEPICTING THE CORNER MONUMENT AND SURROUNDING PHYSICAL FEATURES, INCLUDING THE EXCAVATION AREA AND DEPTH.

PLANNING & ZONING COMMITTEE ADOPTED THE ABOVE FORM ON 12/2/1982

CORNER CODE Z-9(5)

HA625

(B) Describe any record evidence, monument evidence, occupational evidence, testimonial evidence or any other material evidence you considered, and whether the monument was found or placed.

- 1835 MULLETT CALLS FOR 2640 TO S 1/4 CORNERS OF SECTIONS 32 & 33.
- 1859 RUGER VOL 1 PG 119 POST SURROUNDED BY 5 LIMESTONES. CALLS FOR 2625.48 TO S 1/4 COR SEC 32.
- 1860 RUGER VOL 1 PG 127 CALLS FOR VAR 6-18 2625.48 TO S 1/4 COR SEC 32
- 1870 RUGER REMONUMENTATION FIELD NOTES. WEST ON SOUTH LINE OF SW 1/4 OF SEC 33 ON A VAR 5-25 AT 2648.58 INTERSECTED WEST BOUNDARY LINE AT CORNER. FOUND STAKE SET BY SELF SURROUNDED BY LIMESTONES. PLACED BUT LIMESTONE. CALLS FOR VAR 5-37 2638.02 TO S 1/4 COR SEC 32 & 2626.14 TO E 1/4 COR SEC 32.
- 1877 RUGER VOL 3 PG 228 CALLS FOR STONE MONUMENT.
- 1883 RUGER VOL 2 PG 360 CALLS FOR 2661.34 TO W 1/4 COR SEC 4 LA PRAIRIE TWP.
- 1901 KERCH VOL 3 PG 5 FOUND MONUMENT & CALLS FOR 2648.8 TO S 1/4 COR SEC 33 & 2629 TO E 1/4 COR SEC 32.
- 1935 B.J. SUNNY VOL 3 PG 273. SET 1"X30" PIPE THRU CONG. PAVEMENT FOR CORNER. 15' EAST OF EAST FENCE ON NORTH RD, 89' SOUTH TO 30" MAPLE, 87.6' TO BOX ELDER.
- 1964 BATTERMAN VOL 4 PG 106 FOUND PIPE IN PAVEMENT SET BY SUNNY. REFERENCED MONUMENT.
- 197? HURD MAPPING CO. ESTABLISHED NAD27 COORDINATES.
- 1984 BARNES Z-9 DUG AND FOUND NOTHING. SET POLY MONUMENT. THE CORNER WAS ESTABLISHED USING KERCH & SUNNY'S RECORD DISTANCES. THIS WAS IN HARMONY WITH THE BENT REFERENCE PIPE TO THE SE. REFERENCED CORNER. HURD 246,298.59; 2,276,192.52 NAD 27. 246,299.58; 2,276,190.76. PAGE VOIDED.
- 1985 BARNES TWP PROJECT. CALLS FOR N88-35-56W 2640.05 TO S 1/4 COR SEC 32, S88-38-20E 2648.72, & N0-04-00W 2629.57 TO W 1/4 COR SEC 33.
- 1988 BARNES Z-9(1) WITHIN TWO MONTHS, I FOUND THE SCHONSTEDT WAS NOT WORKING PROPERLY AND WAS SENT IN FOR REPAIR. BASED ON INFORMATION SUPPLIED BY RON COMBS, IF FOUND A 1" PIPE AND DROVE IT DEEP AND PLACED AN ALUMINUM MONUMENT. I REMOVED THE POLY MONUMENT THAT I INSTALLED IN 1984 & REFERENCED CORNER. NAD27 HARMONY TWP COORDINATES 246,299.39; 2,276,192.11. HURD 246,298.59; 2,276,192.52 NAD 27. 246,299.01; 2,276,190.82. REFERENCED COR.
- 1988 DOT MADE ROAD IMPROVEMENTS & INSTALLED ROUND MONUMENT BOX AROUND EXISTING ALUM. MONUMENT.
- 1988 BARNES Z-9(2) FOUND ALUM MONUMENT IN ROUND DOT MONUMENT BOX & REFERENCED SAME.
- 1994 WIDOT Z-9(3) DOT ESTABLISHED NAD83(91) COORDINATES. THEY ESTABLISHED THE COORDINATES BY TRAVERSING FROM GPS STATIONS THAT THEY ESTABLISHED PRIOR TO THE ROCK COUNTY GPS NETWORK. I TRANSCRIBED THERE INFORMATION TO THIS SHEET. I ALSO CONVERTED THE STATE PLACE COORDINATES TO THE LATITUDE/LONGITUDE AND ROCK COUNTY COORDINATES THAT ARE SHOWN. NAD83(91) 246,305.70; 2,244,654.77
LAT 42-40-16.02671 LONG. 88-58-23.44371
COUNTY SYSTEM N/S 264,848.255; E/W 506,638.100
- 1998 BARNES Z-9(4) HISTORY OF CORNER. ACCEPTED TIES. ALUM. MON. WAS LEANING SO I USED TIES TO COMPUTE POSITION.

SHEET 1 OF 3

Z-9(5)

Donald Barnes
5/31/02

HA 625

ROAD WAS RECONSTRUCTED AND ALUM. MON. & BOX WERE DESTROYED.
FD TIES AND RESET MONUMENT FROM TIES.

COUNTY COORDINATES BASED ON MAY 2002 ADJUSTMENT:
264,848.66;506,637.92

C) Was the corner restored through acceptance of (1) an obliterated evidence location, or, (2) a found perpetuated location?

ACCEPTED TIES. DRILLED HOLE IN CONCRETE ROAD SURFACE &
CEMENTED STEEL SURVEY SPIKE STAMPED "SURVEY MARK" BY USING
TIES.

D) Describe any material discrepancy between the location of the corner as restored or reestablished and the location of that corner as previously restored or reestablished by distance and direction. Show the discrepancy on the plan view drawing under (a), above. Show the distances between the corner as previously restored or reestablished and (1) the corner as restored or reestablished, and (2) to at least 4 of the witness monuments shown on the drawing in (a), above.

(E) Was the corner reestablished through lost corner proportionate methods? If so, show the method, including the directions and distances to other public land survey corners used as evidence or used for proportioning the corner location.

I, Donald Barnes, hereby certify that the corner location as identified by the corner code index was determined by me under my direction and control and that this U.S. Public Land Survey Monument Record is correct and complete to the best of my knowledge and belief.

seal

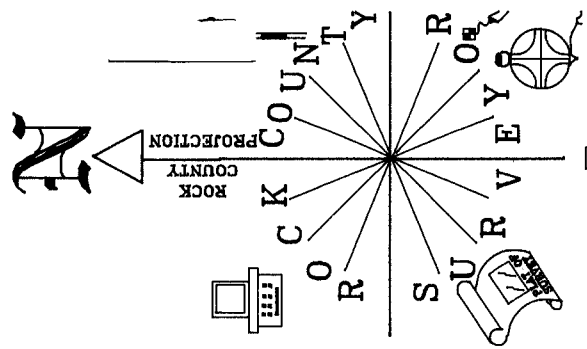
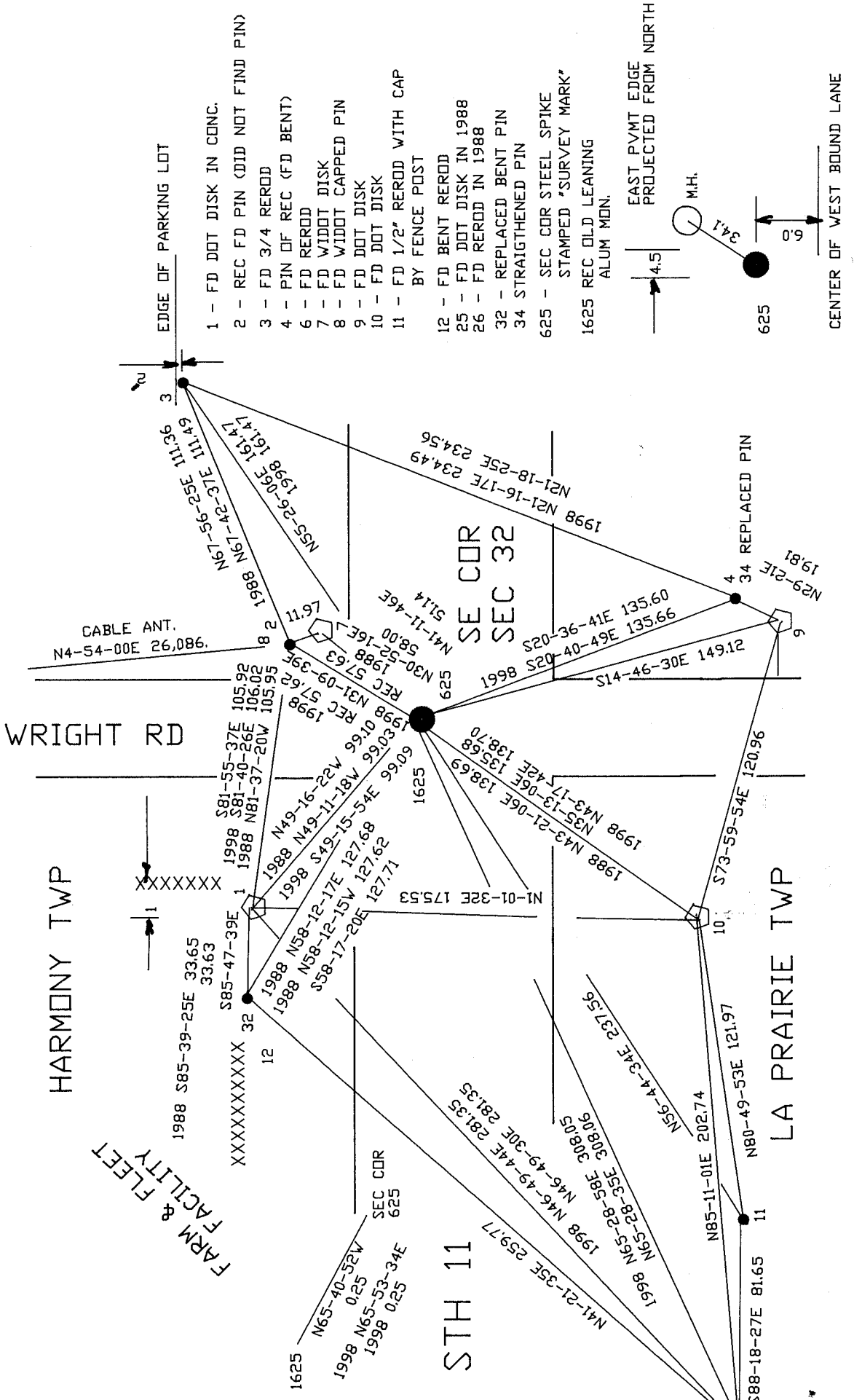
Donald Barnes

emboss 5/31/02

SHEET 2 OF 3

CORNER CODE Z-9(5)

A-E 7.08 REQUIREMENT



NOT TO SCALE
OBSERVATION SHEET

Donald Barnes
EMBOSSSED SEAL
5-31/02

2-9(5)