

U.S. PUBLIC LAND SURVEY MONUMENT RECORD

For Public Land Survey Corners in:

WI ADMINISTRATIVE CODE A-E 7.08 REQUIREMENT

T. 3 N., R. 13 E

CORNER CODE INDEX

A	1	2	3	4	5	6	7	8	9	10	11	12	13	14	15	16	17	18	19	20	21	22	23	24	25
B	6																								
C																									
D																									
E																									
F																									
G	7																								
H																									
I																									
J																									
K																									
L	8																								
M																									
N																									
O																									
P	9																								
Q																									
R																									
S	10																								
T																									
U																									
V																									
W																									
X	11																								
Y																									
Z																									

HARMONY TWP

ROCK COUNTY WI

IF AVAILABLE
ROCK COUNTY COORDINATES PREFERRED

North _____ Elev. _____

East _____

Hor. Datum _____ Vert. Datum _____

LATITUDE _____ ELLIPS. HT. _____

LONGITUDE _____

GPS (X) _____ TRAVERSE (X) _____

BASED ON THE FOLLOWING CONTROL:

PLACE MONUMENT SYMBOL AT PROPER LOCATION ON ABOVE INDEX

CORNER MONUMENT

WITNESS MONUMENT

(a)

BEARINGS ARE BASED ON:

FIELD BOOK _____ PAGE # _____

SHEET 1 OF 2

SHOW A PLAN VIEW DRAWING DEPICTING THE CORNER MONUMENT AND SURROUNDING PHYSICAL FEATURES, INCLUDING THE EXCAVATION AREA AND DEPTH.

PLANNING & ZONING COMMITTEE ADOPTED THE ABOVE FORM ON 12/2/1982

CORNER CODE J 5 (3)

HA543

(B) Describe any record evidence, monument evidence, occupational evidence, testimonial evidence or any other material evidence you considered, and whether the monument was found or placed.

DUG & FOUND BOTTOM 7" OF POLY. MON. ON TOP OF STONE. CUT LIMESTONE IS 2.0' BELOW GRADE. PLACED 2 MAGNETS ON SOUTH SIDE OF STONE. ALSO PLACED THREE 7" ALUM. RISERS WITH CAP ON TOP OF STONE. PLACED MAGNET ABOUT 15" DEEP. MONUMENT IS ABOUT 10' NORTH OF E/W UTILITY POWER LINE, 7' NORTH OF EDGE OF ASPHALT PARKING LOT, & ABOUT 17' EAST OF EAST SIDE OF BUILDING PROJECTED SOUTH.

C) Was the corner restored through acceptance of (1) an obliterated evidence location, or, (2) a found perpetuated location?

ACCEPTED FOUND PERPETUATED LOCATION.

D) Describe any material discrepancy between the location of the corner as restored or reestablished and the location of that corner as previously restored or reestablished by distance and direction. Show the discrepancy on the plan view drawing under (a), above. Show the distances between the corner as previously restored or reestablished and (1) the corner as restored or reestablished, and (2) to at least 4 of the witness monuments shown on the drawing in (a), above.

(E) Was the corner reestablished through lost corner proportionate methods? If so, show the method, including the directions and distances to other public land survey corners used as evidence or used for proportioning the corner location.

I, _____, hereby certify that the corner location as identified by the corner code index was determined by me under by direction and control and that this U.S. Public Land Survey Monument Record is correct and complete to the best of my knowledge and belief.

Donald Barnes
seal

12-15-97

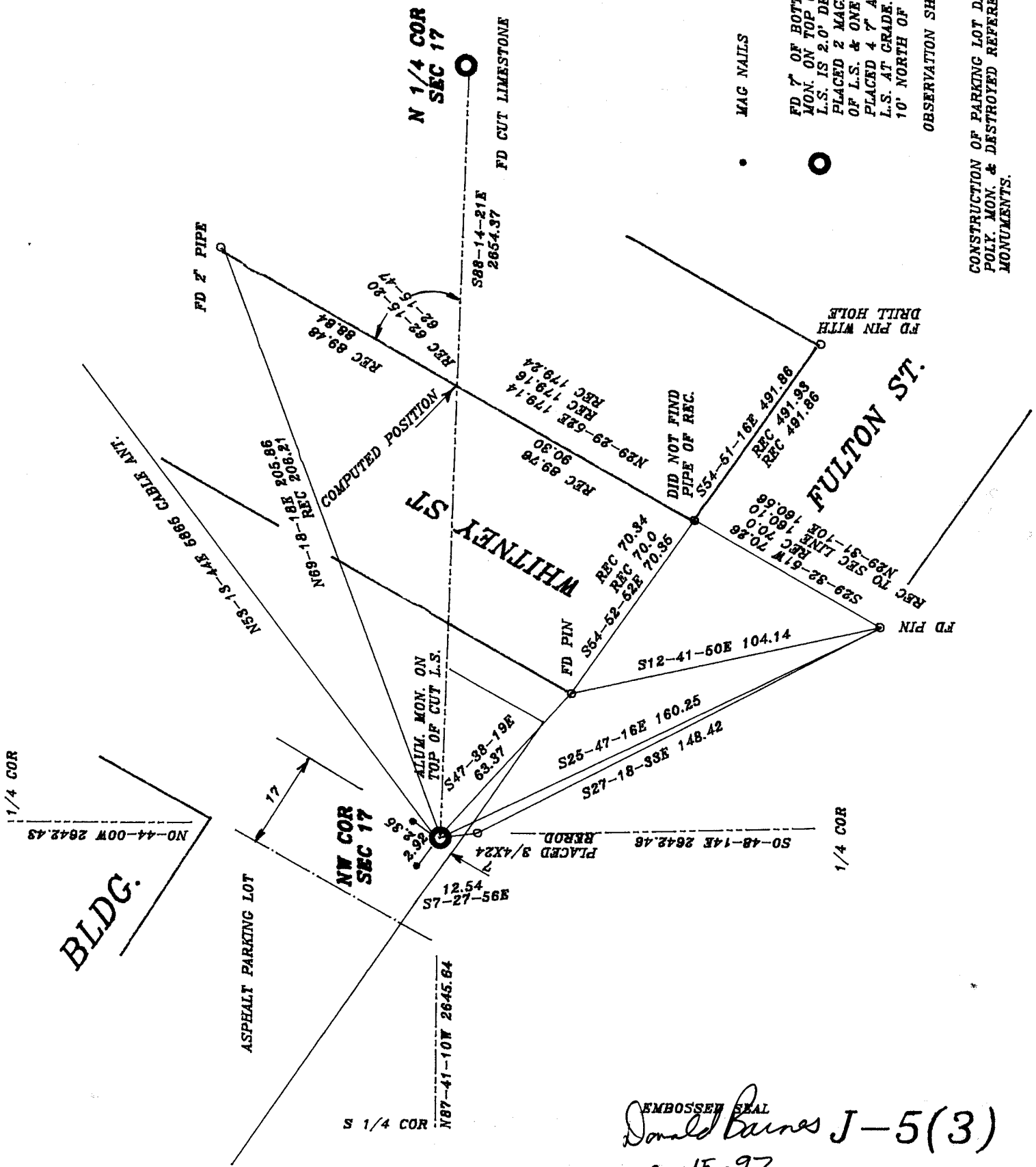
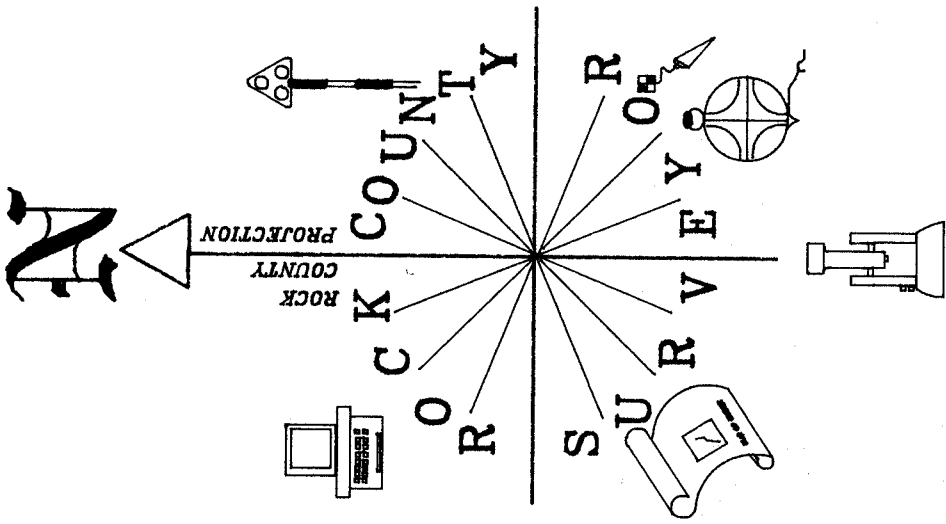
Number of included sheets _____

emboss/stamped

CORNER CODE

A-E 7.08 REQUIREMENT

55(3)



MAG NAILS

FD 7' OF BOTTOM OF POLY. MON. ON TOP OF CUT LIMESTONE L.S. IS 2.0' DEEP PLACED 2 MAGNETS ON SOUTH SIDE OF L.S. & ONE 15" FROM GRADE. PLACED 4 7' ALUM. RISERS ON TOP OF L.S. AT GRADE. MON IS 10' NORTH OF E/W POLE LINE

OBSERVATION SHEET #316

CONSTRUCTION OF PARKING LOT DAMAGED POLY. MON. & DESTROYED REFERENCE MONUMENTS.

EMBOSSED SEAL
 Donald Barnes J-5(3)
 12-15-97