

U. S. PUBLIC LAND SURVEY MONUMENT RECORD

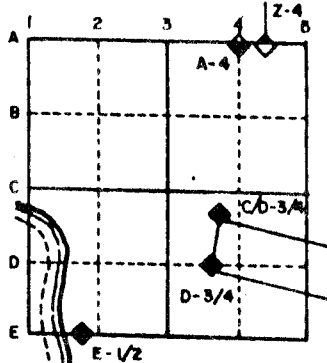
For Public Land Survey Corners in the
T. 3 N., R. 13 E.

CORNER CODE INDEX

	1	2	3	4	5	6	7	8	9	10	11	12	13	14	15	16	17	18	19	20	21	22	23	24	25
A																									
B																									
C	6																								
D		5																							
E			4																						
F				3																					
G					2																				
H																									
I																									
J																									
K																									
L																									
M																									
N																									
O																									
P																									
Q																									
R																									
S																									
T																									
U																									
V																									
W																									
X																									
Y																									
Z																									

PLACE MONUMENT SYMBOL (◆) AT PROPER LOCATION ON ABOVE INDEX

EXAMPLE



HARMONY TWP
ROCK COUNTY WI

IF AVAILABLE
STATE PLANE COORDINATES

North (Y) _____ Eleve. (Z) _____
East (X) _____ Zone _____
Hor. Datum _____ Vert. Datum _____

(a.)

◆ CORNER MONUMENT

○ WITNESS MONUMENT



FIELD BOOK _____ PAGE # _____

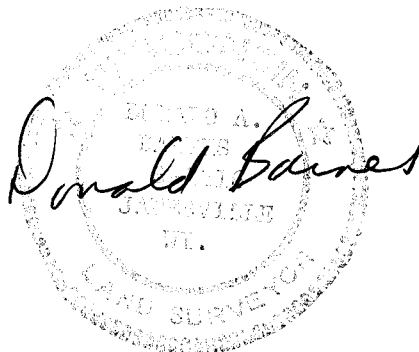
SHOW A PLAN VIEW DRAWING DEPICTING THE CORNER MONUMENT AND SURROUNDING PHYSICAL FEATURES, INCLUDING THE EXCAVATION AREA AND DEPTH. THE CORNER MONUMENT SHALL HAVE THE FOLLOWING CHARACTERISTICS: 1) HAVE AT LEAST TWO PREDETERMINED BREAK-OFF POINTS. 2) IF BROKEN, LEAVE A PERMANENTLY MAGNETIZED REMNANT AT THE ORIGINAL POINT. 3) MUST BE EXTENDABLE. 4) THE CAP IS INSCRIBED: ROCK COUNTY SURVEY MONUMENT - PENALTY FOR DISTURBING MARKER. 5) OR AN EXISTING CUT LIMESTONE. AN IRON PIPE 1 1/2" x 4'0" (MINIMUM) MAY BE USED IN AREAS WHERE GROUND WATER IS WITHIN ONE FOOT OF THE SURFACE. IF THE CORNER IS OCCUPIED BY AN IMPROVEMENT (MANHOLE, BURIED CABLE, ETC.) ANY DURABLE, DISTINCT MONUMENT MAY BE USED. CORNERS SHALL BE REFERENCED WITH AT LEAST 4 DURABLE WITNESS MONUMENTS. WITNESS MONUMENTS SHALL BE MADE OF CONCRETE, NATURAL STONE, IRON OR OTHER EQUALLY DURABLE MATERIAL, EXCEPT WOOD. DESCRIBE THE CORNER AND THE WITNESS MONUMENTS.

MICROFILMED

CORNER CODE:
R3(1)

(B) Describe any record evidence, monument evidence, occupational evidence, testimonial evidence or any other material evidence you considered, and whether the monument was found or placed.

- 1836 LYON ORIGINAL SURVEYOR SET QUARTER SECTION POST & MADE MOUND OF EARTH & SOD. CALLS FOR 2640 TO SE CORNER OF SECTION 19 AND 2574.66 TO SW CORNER OF SECTION 19.
- 1856 MILLER. BOOK #3 PG 21 SUB "SD SMITH'S ADD". CALLS FOR POST. PLAT WAS REPLATTED.
- 1868 LOCKE VOL 1 PG 313 FOUND STAKE AND WHITE BRICK SET BY RUGER. CALLS FOR 2648.91' TO CENTER OF SECTION 19.
- 1870 RUGER REMONUMENTATION FIELD NOTES. FOUND WHITE BRICK PLANTED BY SELF. CALLS FOR A VAR 5-02 2573.01' TO SW AND VAR 5-07 2635.55' TO SE CORNERS OF SECTION 19. PLACED CUT LIMESTONE.
- 1872 LEE VOL 2 PG 86 CALLS FOR 2636.54 TO THE SE CORNER OF SECTION 19 BUT STATES NOTHING ABOUT THE MONUMENT.
- 1874 RUGER VOL 2 PG 126 CALLS FOR A STONE MONUMENT AND USED IT TO SUBDIVIDE SECTION 19.
- 1879 RUGER VOL 2 PG 266 CALLS FOR A MONUMENT BUT STATES NOTHING ABOUT IT. USED IT TO SUBDIVIDE SECTION 30.
- 1881 LEE VOL 2 PG 323 FOUND MONUMENT AND USED IT FOR THE N/S LINE OF SECTION 30. STATED NOTHING ABOUT MONUMENT.
- 1884 RUGER VOL 2 PG 178 CALLS FOR A STONE MONUMENT AND 2635.38 TO SE CORNER OF SECTION 19 AND 2647.59 TO CENTER OF SECTION 19.
- 1908 KERCH VOL 3 PG 49 USED MONUMENT BUT STATES NOTHING ABOUT IT.
- 1932 SUNNY VOL 3 PG 206 CALLS FOR A FOUND STONE AND PIPE 1054.72 TO THE NORTH.
- 1932 SUNNY MAP #1835. CALLS FOR A STONE MONUMENT AND A PIPE 1054.72' TO THE EAST.
- 1937 SUNNY MAP #1851. CALLS FOR A STONE MONUMENT. POB FOR A SURVEY THAT IS 66' NORTH OF THE STONE.
- 1937 SUNNY VOL 3 PG 342 FOUND STONE MONUMENT. CALLS FOR A PIPE 66.00 TO THE NORTH.
- 1938 SUNNY BOOK #12 PG 15 SUB "SIRON'S SUBDIVISION" CALLS FOR STONE MONUMENT.
- 1950 SUNNY BOOK 15 PG 22A SUB "O'HARA'S SUBDIVISION". DOESN'T STATE ANYTHING ABOUT THE MONUMENT BUT CALLS FOR A PIPE 991.88 TO THE SOUTH OF THE CORNER.
- 1954 KAKUSKE BOOK #16 PG 30 & 31 SUB "SECOND HAWTHORNE PARK". STATED NOTHING ABOUT THE MONUMENT. CALLS FOR AN ANGLE OF 87-32 FROM THE SE CORNER OF SECTION 19 TO THE CENTER OF SECTION 30.
- 1955 BATTERMAN BOOK #17 PG 20 STATES NOTHING ABOUT THE MONUMENT. CALLS FOR A PIPE 263.76 EAST OF THE CORNER. STATES THAT THE PROPERTY LINE IS 4' FROM THE NORTH LINE OF THE NE 1/4 OF SECTION 30 AND 4' FROM THE N/S CENTERLINE OF SECTION 30. THE COMPUTED DISTANCE FROM THE LOT CORNER TO THE N 1/4 CORNER OF SECTION 30 IS 5.78'.
- 1957 KAKUSKE BOOK # PG SUB "BOYNTON" CALLS FOR STONE AND A IRON PIPE 66.06 TO THE WEST.
- 1974 COMBS CSM VOL 4 PG 241 STATES NOTHING ABOUT THE MONUMENT. CALLS FOR A PIPE 66.07 TO THE NORTH.
- 1984 BARNES R3 FOUND DRILL HOLE INSIDE CUT "X". INSTALLED BRASS DISK. CORNER IS OVER UNDERGROUND ELECTRIC LINES. THE TOWNSHIP PROJECT DISTANCE TO THE SW CORNER OF SECTION 19 IS 2573.95 AND THE DISTANCE TO THE SE CORNER OF SECTION 19 IS 2637.30.
- 1992 RON COMBS CSM VOL 15 PG 507 CALLS FOR A CROSS IN CONCRETE AND A PIPE 847.45 TO THE NORTH.



10F 3

R3(1)

DISK WAS BROKEN OFF. FOUND THE STEM OF THE DISK. DUG AND FOUND CUT LIMESTONE ABOUT 1' BELOW SIDEWALK GRADE. TOP PART OF STONE WAS BROKEN. REMOVED PIECES AND FOUND REMAINING PART OF STONE IN EXCELLENT CONDITION. ELECTRIC LINE IN PIPE LAYS IN A NE&SW DIRECTION AND IS ABOUT 3" NORTHWESTERLY OF STONE. THE PIPE IS ABOVE THE STONE. PLACED MAGNETS 1.5 DEEP ON SOUTH SIDE OF STONE. PLACED 7" ALUMINUM RISER WITH CAP IN NEW CONCRETE SIDEWALK RAMP. THE STEM OF THE DISK WAS .04 NORTH AND .02 EAST OF THE CUT LIMESTONE.

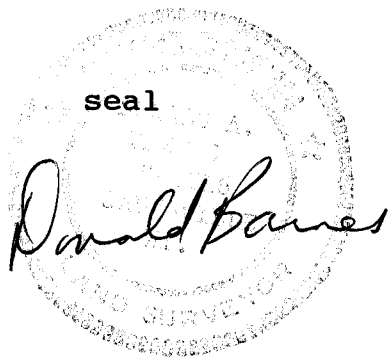
C) Was the corner restored through acceptance of (1) an obliterated evidence location, or, (2) a found perpetuated location?

ACCEPTED FOUND CUT LIMESTONE.

D) Describe any material discrepancy between the location of the corner as restored or reestablished and the location of that corner as previously restored or reestablished by distance and direction. Show the discrepancy on the plan view drawing under (a), above. Show the distances between the corner as previously restored or reestablished and (1) the corner as restored or reestablished, and (2) to at least 4 of the witness monuments shown on the drawing in (a), above.

(E) Was the corner reestablished through lost corner proportionate methods? If so, show the method, including the directions and distances to other public land survey corners used as evidence or used for proportioning the corner location.

I, Donald Barnes, hereby certify that the corner points as identified by the corner code index were, in a field survey on, April 28, 1993, established, re-established, monumented, re-monumented, recovered or restored as expressed below and in conformance with the regulations and rules as required in the current manual of survey instructions of the United States Department of Interior, Bureau of Land Management.



COUNTY SURVEYOR FILING DATA

Date of computer entry _____

Date microfilmed _____

Number of included sheets 2

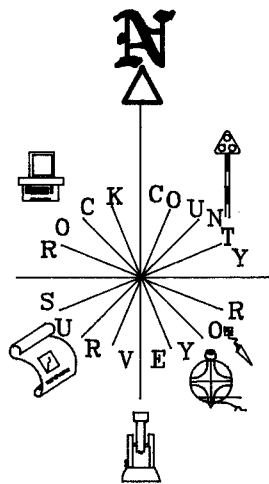
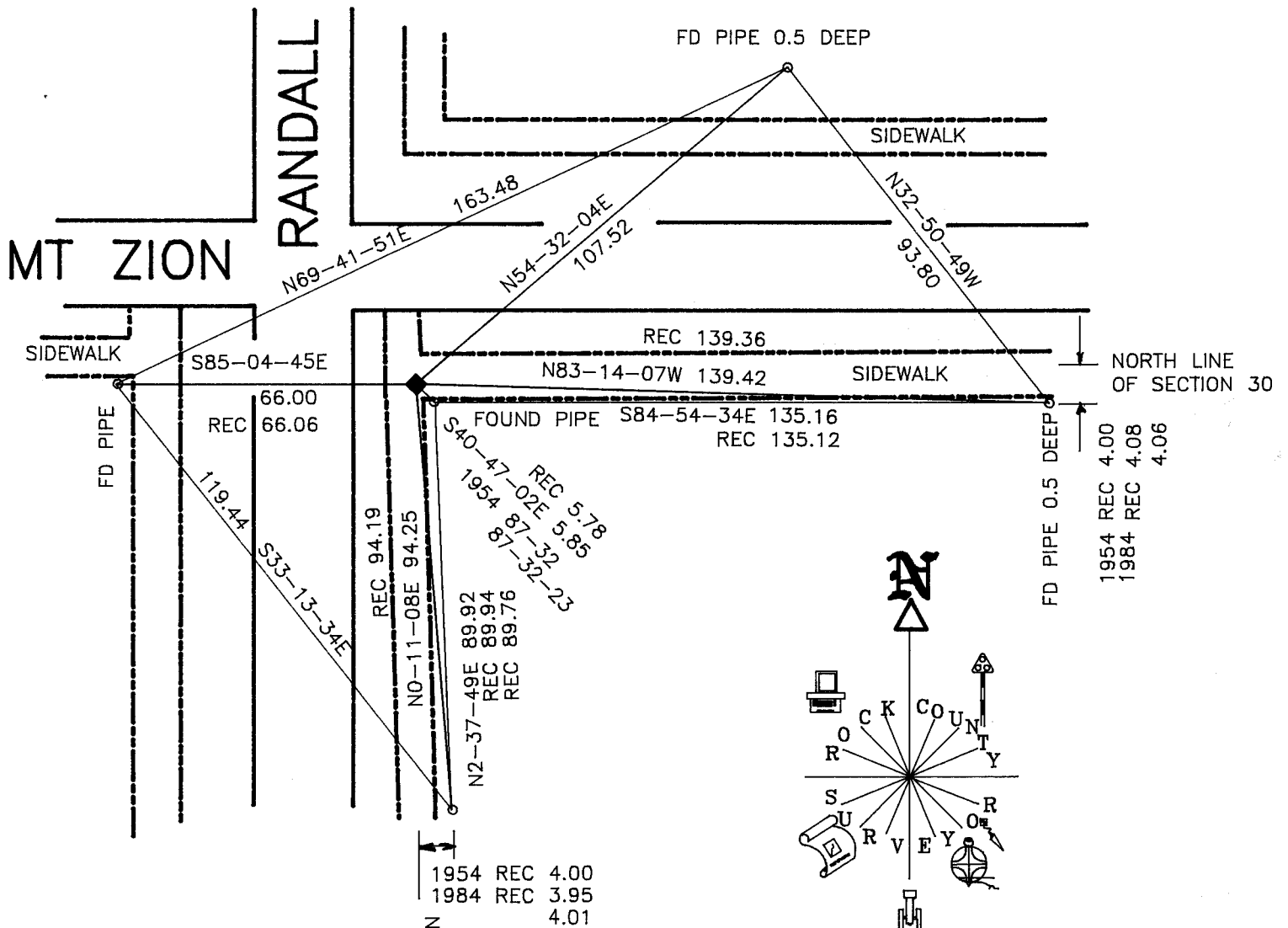
CORNER CODE

AFFIX YOUR LAND SURVEYOR SEAL

2 OF 3

R3(1)

Donald Barnes



OBSERVATION SHEET #582

DISK STEM WAS REMOVED FOR INSTALLATION OF SIDEWALK RAMP.*
 FOUND CUT LIMESTONE ABOUT 1' BELOW
 SIDEWALK GRADE. TOP PART OF MONUMENT WAS BROKEN OFF.
 PLACED MAGNETS ON SOUTH SIDE OF CUT
 LIMESTONE ABOUT 1.5' BELOW SIDEWALK GRADE.
 ELECTRIC LINE IN PIPE IS ABOUT 3" NORTH OF STONE.
 THE PIPE LAYS IN A NE/SW DIRECTION. PIPE
 IS ABOVE TOP GRADE OF STONE.

R3(1)
 3 OF 3