

U.S. PUBLIC LAND SURVEY MONUMENT RECORD

For Public Land Survey Corners in:

WI ADMINISTRATIVE CODE A-E 7.08 REQUIREMENT

T. 3 N., R. 13 E

CORNER CODE INDEX

A	1	2	3	4	5	6	7	8	9	10	11	12	13	14	15	16	17	18	19	20	21	22	23	24	25
B																									
C	6																								
D																									
E																									
F																									
G	1																								
H																									
I																									
J																									
K																									
L	18																								
M																									
N																									
O																									
P	19																								
Q																									
R																									
S	30																								
T																									
U																									
V																									
W																									
X	31																								
Y																									
Z																									

HARMONY TWP

ROCK COUNTY WI

IF AVAILABLE
ROCK COUNTY COORDINATES PREFERRED

North _____ Elev. _____

East _____

Hor. Datum _____ Vert. Datum _____

LATITUDE _____ ELLIPS. HT. _____

LONGITUDE _____

GPS (X) _____ TRAVERSE (X) _____

BASED ON THE FOLLOWING CONTROL:

PLACE MONUMENT SYMBOL AT PROPER LOCATION ON ABOVE INDEX

CORNER MONUMENT

WITNESS MONUMENT

(a)

BEARINGS ARE BASED ON:

FIELD BOOK _____ PAGE # _____

SHEET 1 OF 2

SHOW A PLAN VIEW DRAWING DEPICTING THE CORNER MONUMENT AND SURROUNDING PHYSICAL FEATURES, INCLUDING THE EXCAVATION AREA AND DEPTH.

PLANNING & ZONING COMMITTEE ADOPTED THE ABOVE FORM ON 12/2/1982

CORNER CODE J7(3)

Ha544

(B) Describe any record evidence, monument evidence, occupational evidence, testimonial evidence or any other material evidence you considered, and whether the monument was found or placed.

1861 RUGER VOL 1 PG 155 VAR 5-40 2625.81 TO SE COR SEC 8

1870 RUGER REMONUMENTATION. PG 26 EAST ON SOUTH LINE OF SW ¼ SEC 8 ON A
VAR 4-45

OFFSET SOUTH TO AVOID JOSEPH SPAULDING HOUSE 121.77', OFFSET NORTH
AFTER PASSING HOUSE 126.23' @ 2652.21' INTERSECTED ¼ LINE 18.48' SOUTH
OF ¼ COR FD STAKE SURROUNDED BY STONES ON COR & STUMPS OF BOTH
BTS. COR VAR 5-15

EAST ON SOUTH LINE OF SE ¼ SEC 8 ON A VAR 5-30

AT 2637.03' INTERSECTED EAST BOUNDARY LINE 3.3' SOUTH OF COR. FD
STAKE SURROUNDED BY HH STONES ON COR. SET BY SELF. COR VAR 5-34

1886 RUGER VOL 2 PG 289 FD STONE MON SET BY SELF, VAR 3-33 2641.32 TO SE COR
SEC 8, VAR 5-16 2650.56 TO SW COR SEC 8 VAR 5-47 2643.63 TO CENTER OF SEC 8,
VAR 5-4 2637.03 TO CEN SEC 17, & 5273.18 TO S ¼ COR SEC 17.

1893 BLEEDHORN VOL 2 PG 446 CALLS FOR "MON"

18?? SURVEYOR?? VOL 2 PG 283 FD STONE MON. 2637.03 TO CENTER OF SEC 17 &
5273.18 TO S ¼ COR SEC 17.

1902 SURVEYOR? VOL 3 PG 14 MON. @ ¼ SEC COR BETWEEN SEC 8 & 17, 561.0' TO
STONE 18X10X5 (SOUTH).

197? HURD MAPPING CO. VOL 5 PG 518 267,423.025'; 2,273,027.536'

1984 BARNES VOL 6 PG 321 LOCAL DATUM N88-10-22W 2654.48 TO SW COR SEC 8 &
S88-19-17E 2641.93 TO SE COR SEC 8.

1984 BARNES J-7 FOUND CUT L.S. 0.5' ABOVE GROUND. SET CARSONITE &
REFERENCED SAME.

1988 BARNES VOL 6 PG 392 N0-45-28W 2645.74 TO CENTER OF SEC 8, S88-19-17E 2641.93
TO SE COR SEC 8, N0-45-28W 2645.82 FROM CENTER OF SEC 8 TO N ¼ COR SEC 8,
& N88-10-23W 2654.47 TO SW COR SEC 8.

1996 WOOD VOL 6 PG 451 FOR WIDOT PROJECT 1390-03-21 CUT LIMESTONE
267,438.87; 2,241,490.56' NAD83(1991).

1996 BARNES J-7(1) USED WOOD'S COORDINATES TO COMPUTE TO COUNTY
SYSTEM; 286,015.95; 503,709.44; CONV. ANGLE +0-03-35.5

2000 BARNES J-7(2) FOUND CUT L.S. AND REFERENCED SAME FOR ROAD
RELOCATION.

FOUND TIES & PLACED ALUM. MON. WITH MAGNETS ABOUT 24" DEEP. MON. IS
ABOUT 0.6' SOUTH OF CENTER OF PVMT. COORDINATE FROM MOST RECENT
ADJUSTMENT 286,016.387; 503,709.194 GPS

C) Was the corner restored through acceptance of (1) an obliterated evidence location, or, (2) a found
perpetuated location?

ACCEPTED FOUND OBLITERATED EVIDENCE LOCATION.

D) Describe any material discrepancy between the location of the corner as restored or reestablished and the
location of that corner as previously restored or reestablished by distance and direction. Show the discrepancy
on the plan view drawing under (a), above. Show the distances between the corner as previously restored or
reestablished and (1) the corner as restored or reestablished, and (2) to at least 4 of the witness monuments
shown on the drawing in (a), above.

I, Donald Barnes, hereby certify that the corner location as identified by the corner code index was
determined by me under my direction and control and that this U.S. Public Land Survey Monument Record
is correct and complete to the best of my knowledge and belief.

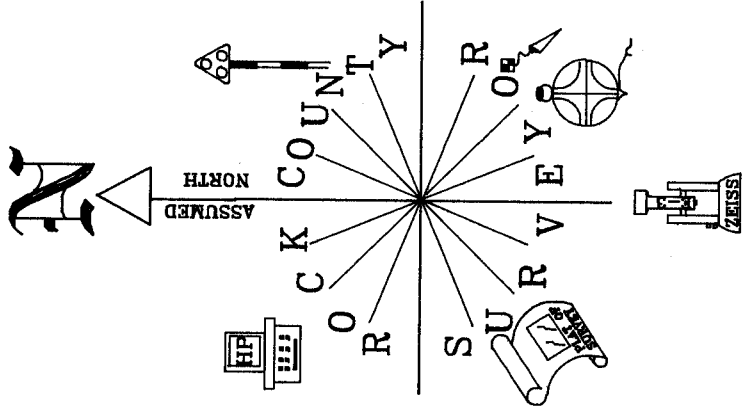
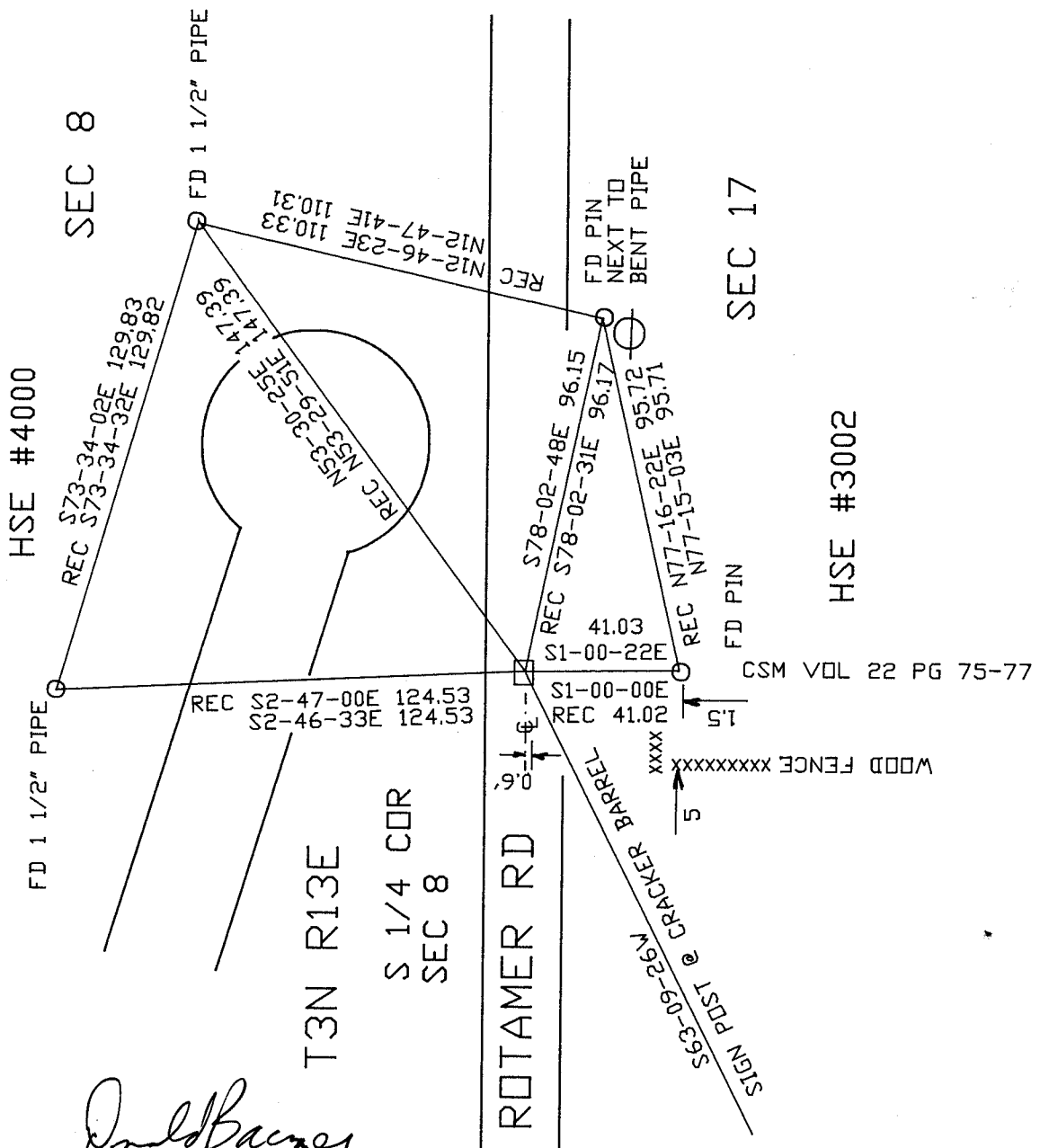
seal

Number of included sheets 1

emboss
Donald Barnes
Nov 29, 2000

CORNER CODE J-7(3)

A-E 7.08 REQUIREMENT



OBSERVATION SHEET
 PLACED ALUM. MON.

Donald Barnes

EMBOSSSED SEAL
 NOV 29 2000

J-7(3)