

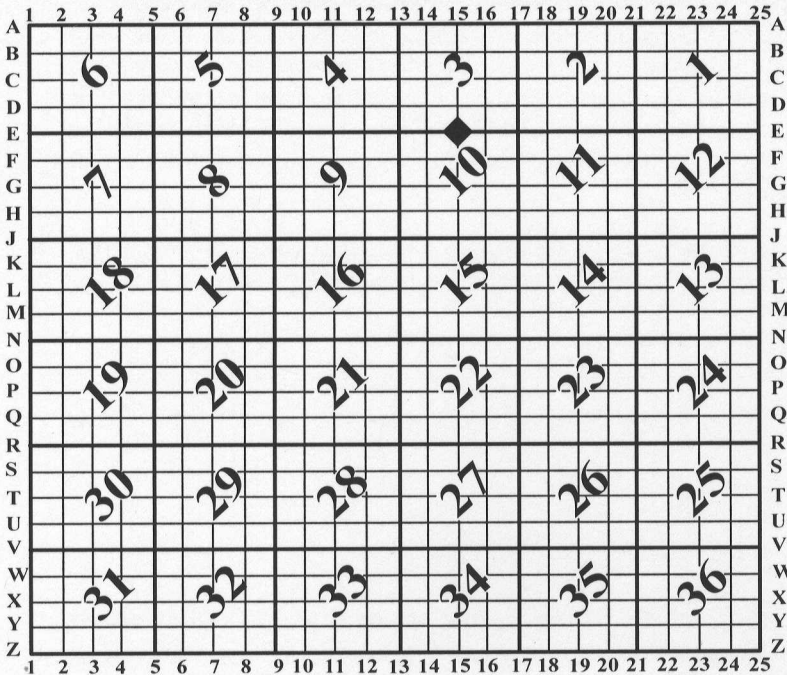
# U.S. PUBLIC LAND SURVEY MONUMENT RECORD

For Public Land Survey Corners In: WI ADMINISTRATIVE CODE A-E 7.08 REQUIREMENT

T. 3 N. - R. 10 E. of the 4th P.M.

### CORNER CODE INDEX

(PLACE "◆" SYMBOL AT PROPER PLSS CORNER LOCATION)



MAGNOLIA TWP  
ROCK COUNTY WI

### COORDINATES

(GNSS DERIVED VIA WISCORS)

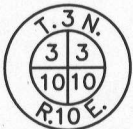
NORTHING: 291865.71      ELEV: N/A  
EASTING: 419081.65

Hor. Datum: WISCRS-ROCK, (NA2011)

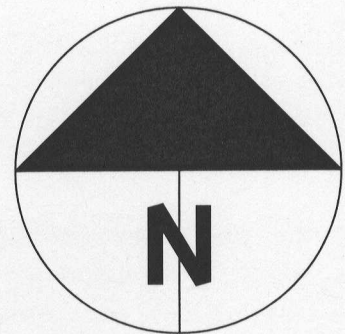
Vertical Datum: NAVD 88, (If applicable)

(a) LEGEND

- - 3/4" x 24" REBAR SET W/RED CAP
- - ALUMINUM MONUMENT FOUND
- (#) - PREVIOUS TIE-SHEET DIMENSION
- d/d - USED AS CONTROL FOR DISTANCE/DISTANCE CALCULATION, SEE PAGE 2 FOR DETAILS.

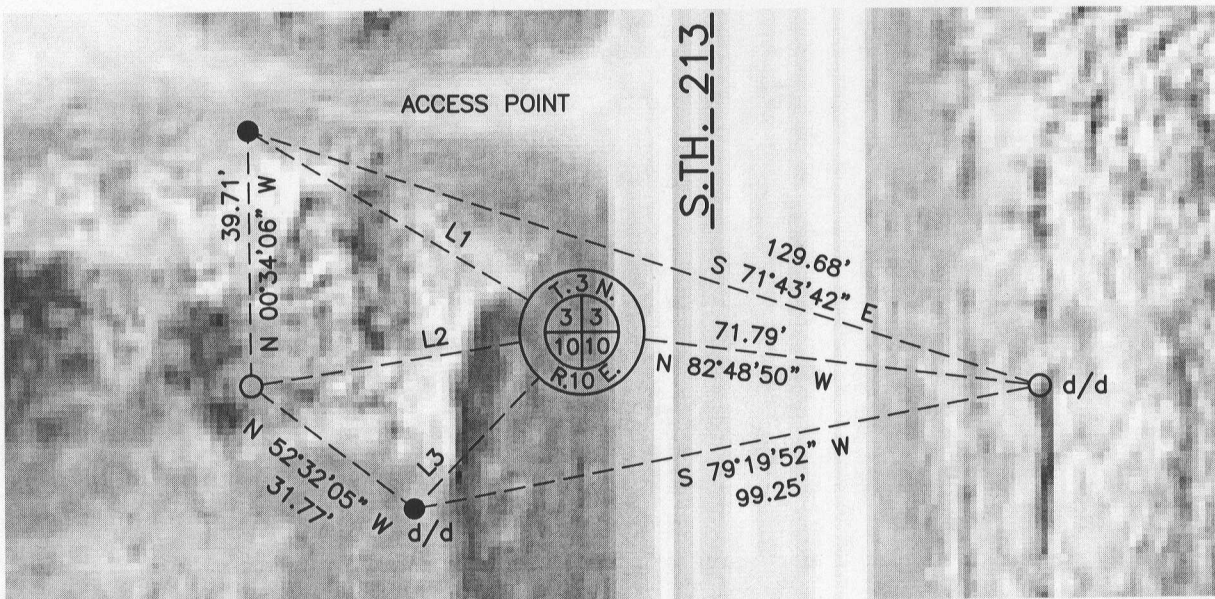
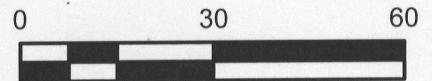


— SET A BERNTSEN 30" ALUMINUM BREAK-OFF PIPE MONUMENT WITH POLYSTRENE BASE. SEE PG. 2 FOR ADDL. DETAILS



LINE TABLE

LINE	BEARING	DISTANCE	
L1	S 58°36'35" E	60.82'	
L2	N 81°08'34" E	52.14'	(52.72') See pg. 2
L3	N 43°52'48" E	37.95'	



**B) Describe any record evidence, monument evidence, occupational evidence, testimonial evidence or any other material evidence you considered, and whether the monument was found or placed.**

I found two aluminum witnesses, (G-1 Piston Mon), referenced on the V. 5, Pg. 163 record, (Barnes, 1976). In addition, I found a 3<sup>rd</sup> witness that was disturbed however, I was able to spin the monument out as the bottom 2/3 was straight; I set a capped 3/4" x 24" iron rebar in its place. At the PLSS monument location, I found a corroded aluminum monument, corroded to the point that it is dissolved into a gray material absent any solid parts other than fragments.

Two of the three witnesses check well between each other. The replaced monument, (Southerly witness), checks to 0.02' to the easterly witness on the opposite side of S.T.H. 213. A distance to the 3<sup>rd</sup> witness, (westerly), is not given from either of the other 2 that were recovered. The westerly monument is 1 foot, +/-, out of the ground and appears to be leaning northeasterly. I computed the PLSS corner location by distance/distance intersection from the southerly & easterly witnesses. The solution lands in the middle, more or less, of the corroded monument material however, checks the 3<sup>rd</sup> witness to 0.56 feet; Given the 3<sup>rd</sup> witness is leaning to the NE and the solution is in the corroded material, I accept the distance/distance solution as the PLSS corner location.

I set a Berntsen 30" break-off pipe monument w/cap at the PLSS corner location. It is stamped with a "+", "PUBLIC LAND SURVEY SYSTEM CORNER" & "ROCK COUNTY SURVEYOR S-2331". One additional witness was set per the map.

**C) Was the corner restored through acceptance of (1) an obliterated evidence location, or, (2) a found perpetuated location?**

Found perpetuated location.

**D) Describe any material discrepancy between the location of the corner as restored or reestablished and the location of that corner as previously restored or reestablished by distance and direction. Show the discrepancy on the plan view drawing under (a), above. Show the distances between the corner as previously restored or reestablished and (1) the corner as restored or reestablished, and (2) to at least 4 of the witness monuments shown on the drawing in (a), above.**

I did not find a discrepancy between the corner restored and a previously documented corner location. *Discrepancy* being defined as *disagreeing* with a corner location, *not* as noting dimensional differences between current/former tie sheets due to measuring methods. The current and *most recent* tie-sheet dimensions filed for the corner are noted.

**(E) Was the corner reestablished through lost corner proportionate methods? If so, show the method, including the directions and distances to other public land survey corners used as evidence or used for proportioning the corner location.**

N/A

I, **Jason R. Houle**, hereby certify that the corner location as identified by the corner code index was determined by me under my direction and control and that this U.S. Public Land Survey Monument Record is correct and complete to the best of my knowledge and belief.

CORNER CODE: E-15  
(A.E. 7.08 REQUIREMENT)

