

Paper weight-110# (minimum)

Black nonfading ink required

U.S. PUBLIC LAND SURVEY MONUMENT RECORD

For Public Land Survey Corners In:

WI ADMINISTRATIVE CODE A-E 7.08 REQUIREMENT

T. 3 N. R. 10 E. 4th P.M.

REV 10/23/2004

USMONREC.DWG

CORNER CODE INDEX

MAGNOLIA TWP

ROCK COUNTY WI

IF AVAILABLE

ROCK COUNTY COORDINATES PREFERRED

A	1	2	3	4	5	6	7	8	9	10	11	12	13	14	15	16	17	18	19	20	21	22	23	24	25	A
B			6				5				4				3			2				1				B
C																										C
D																										D
E																										E
F																										F
G																										G
H																										H
J																										J
K																										K
L																										L
M																										M
N																										N
O																										O
P																										P
Q																										Q
R																										R
S																										S
T																										T
U																										U
V																										V
W																										W
X																										X
Y																										Y
Z																										Z

North _____ Elev. _____

East _____

Hor. Datum _____ Vert. Datum _____

LATITUDE _____ ELLIPS. HT. _____

LONGITUDE _____

NAD83(91) _____ NETWORK ADJ. YR _____

GPS (X) _____ TRAVERSE (X) _____

BASED ON THE FOLLOWING CONTROL:

PLACE MONUMENT SYMBOL AT PROPER LOCATION ON ABOVE INDEX

CORNER MONUMENT

WITNESS MONUMENT

(a)

ROCK COUNTY PROJECTION

BEARINGS ARE BASED ON:

FIELD BOOK _____ PAGE # _____

OR OBSERVATION SHEET _____

SHEET 1 OF 3

SHOW A PLAN VIEW DRAWING DEPICTING THE CORNER MONUMENT AND SURROUNDING PHYSICAL FEATURES, INCLUDING THE EXCAVATION AREA AND DEPTH.

PLANNING & ZONING COMMITTEE ADOPTED THIS FORM ON 12/2/1982

CORNER CODE P-5(1)

MA575 E1/4CORSEC19T3NR10E

(B) Describe any record evidence, monument evidence, occupational evidence, testimonial evidence or any other material evidence you considered, and whether the monument was found or placed.

1833 HARRISON DEC 6TH NORTH BET SECS 19 & 20
2640.00 QUARTER SEC COR {BURR O 12" S43? 580.8';
BURR O 18" N87W 31.02' BURR O 12" & BURR O
18"} MARKED
5280.00 COR TO SEC 17,18,19,20
{BURR O 12" N31W 46.86'; BURR O 14" N45E
39.60'; BURR O 10" S62E 27.72'; BURR O 14"
S78W 112.86'

LAND ROLLING 2ND RATE TIMBER BURR &
WHITE OAK UNDERGROWTH GRASS & WEEDS
(RAIN & SNOW)

1852 RD REC BK1 PG 15 COMMENCING AT THE SE CORNER OF
SECTION 19 AND RUNNING THENCE NORTH ON SECTIONAL
LINES TO THE QUARTER POST BETWEEN SECTIONS 17 & 18.
IN WITNESS WHERE OF WE HAVE HEREUNTO SET OUR HANDS
"SEP 1852"

1978 TALARCZYK CSM VOL 8 PG 45 DOES NOT STATE ANYTHING
ABOUT THE MON. N89-25-11W TO W 1/4 COR SEC 19

1978 BARNES VOL 5 PG 423 ALUM MON 2664.94 TO NE COR SEC
19, 1329.87 TO IP @ E 1/16TH COR OF SE 1/4 COR SEC 19,
2659.14 TO ALUM @ SE COR SEC 19

1978 PHILLIPSON CSM VOL 8 PG 208 STATES NOTHING ABOUT
MON. N89-25-11W TO W 1/4 COR SEC 19

1978 TALARCZYK #02766 STATES NOTHING ABOUT MON.

1980 TALARCZYK CSM VOL 10 PG 117 ALUM 2665.79 TO ALUM @
SW COR SEC 19.

1995 TALARCZYK #09560 CORNER COMPUTED TO FROM OUR
PREVIOUS JOB #5478 5242.64 TO CORNER COMPUTED TO
FROM OUR PREVIOUS JOB #5478 @ W 1/4 COR SEC 29

1995 TALARCZYK VOL 18 PG 163 CORNER COMPUTED TO FROM
OUR JOB #5478 5242.64 TO W 1/4 COR SEC 19

2009 COMBS CSM 33 PG 248 ALUM NO-29-30W 2664.94 TO SET PK
@ NE COR SEC 19

2009 COMBS P-5 FD ALUM OF RECORD AND SET 4 REF
MONUMENTS.

FD ALUM MON 0.15' DEEP, SW REFERENC MON, & PIPE LAYING ON
TOP OF GROUND @ NW REFERENCE MON.

C) Was the corner restored through acceptance of (1) an obliterated evidence location, or, (2) a found
perpetuated location?

ACCEPTED FD ALUM. MON.

D) Describe any material discrepancy between the location of the corner as restored or reestablished
and the location of that corner as previously restored or reestablished by distance and direction. Show
the discrepancy on the plan view drawing under (a), above. Show the distances between the corner as
previously restored or reestablished and (1) the corner as restored or reestablished, and (2) to at least 4
of the witness monuments shown on the drawing in (a), above.

NONE

(E) Was the corner reestablished through lost corner proportionate methods? If so, show the method,
including the directions and distances to other public land survey corners used as evidence or used for
proportioning the corner location.

NO

I, Donald Barnes, hereby certify that the corner location as identified by the corner code index
was determined by me under my direction and control and that this U.S. Public Land Survey
Monument Record is correct and complete to the best of my knowledge and belief.

SEAL

SHEET 1 OF 3

Donald Barnes

Sep 20, 2012

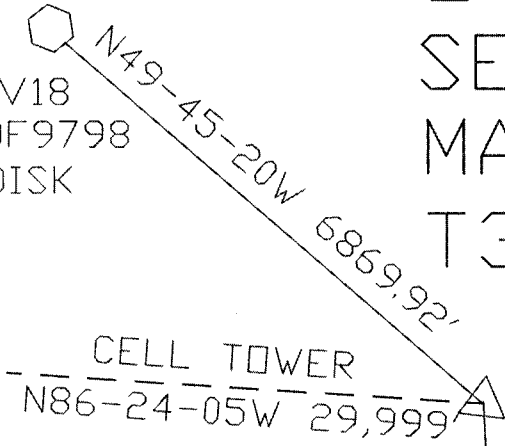
CORNER CODE

P-5(1)

A.E. 7.08 REQUIREMENT

E 1/4 COR
 SEC 19
 MAGNOLIA TWP
 T3N R10E

1V18
 DF9798
 DISK

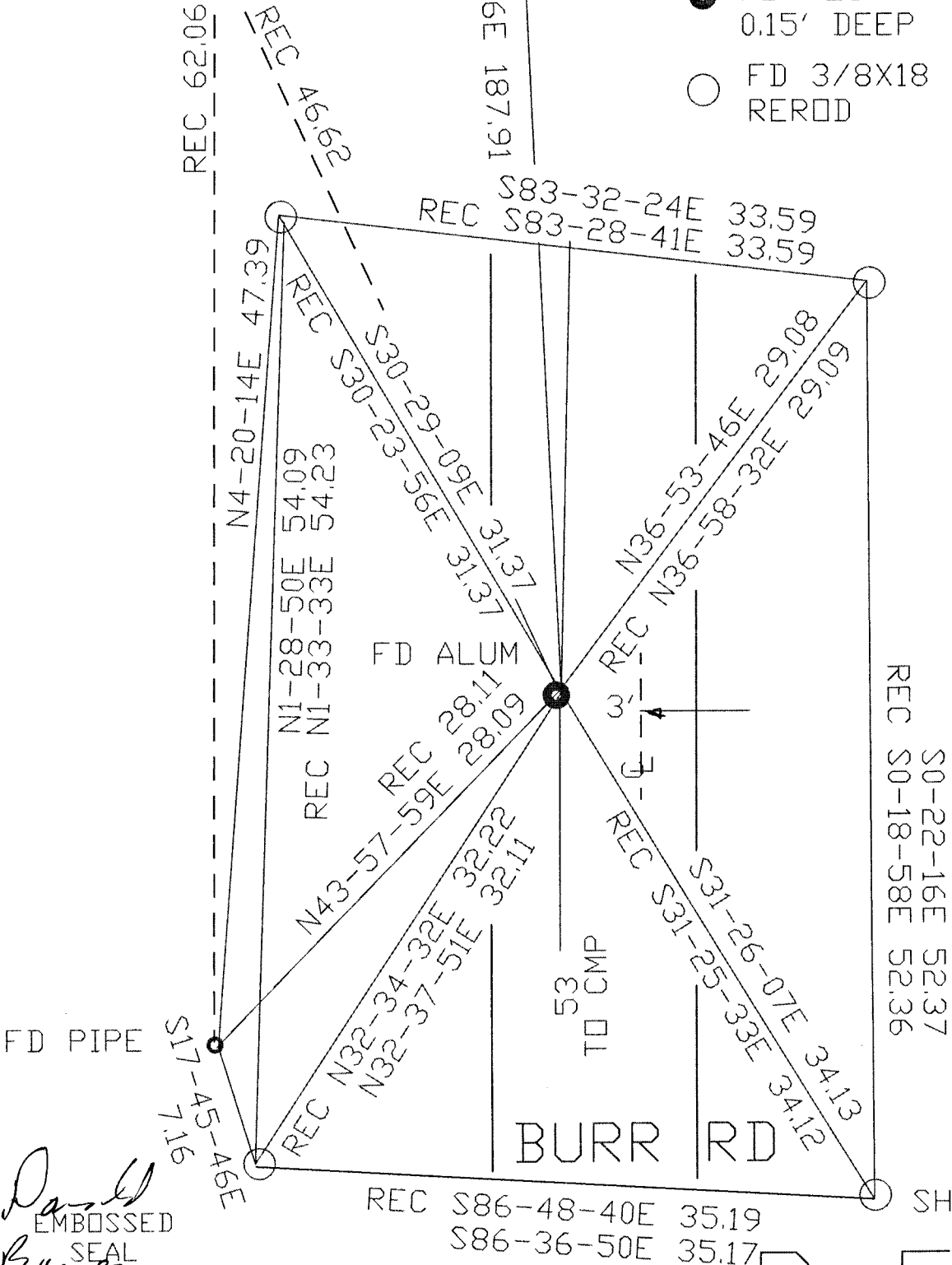


COTTON GIN
 PIN .6' EAST
 OF WEST PVMT
 EDGE

1978 BARNES VOL 5 PG 413
 2009 COMBS P-5

FD PIPE
 LAYING ON TOP
 OF GROUND

- FD ALUM.
0.15' DEEP
- FD 3/8X18
REROD



David Barnes
 EMBOSSED
 SEAL
 Sep 20, 2012

Donald Barnes
Sep 20, 2012

1833 HARRISON FN 2724.48
1873 RUGER VAR6-18 2589.35
1978 BARNES 6-443 2581.96
1995 BARNES NE S89-44-58E 2581.78

1833 HARRISON 5364.48
1978 BARNES 5241.10

180

SW

1833 HARRISON 2640
1855 CHURCH 1-55 VAR N82-30E
1855 CHURCH 1-55 2640.00
1978 BARNES 6-443 2659.14
2009 COMBS CSM33-248 N89-57-48E 2659.14
2009 LATHROP N-3 N89-57-48E 2659.14
N89-52-59E 2659.74

NO-36-12E 2657.13
1985 BARNES N1-08-48E 2657.17
1870 RUGER 2652.21
1833 HARRISON 2640.00

SEC CDR

1355.57 BARNES 1978 1355.57

1349.12 1870 RUGER 1349.12

1978 BARNES 6-362 2711.14
1870 RUGER 2706.66
1833 HARRISON 2656.50

17

SW

1833 HARRISON 2640.00

1978 BARNES 5-423 2664.94
2009 LATHROP N-3 NO-29-30W 2664.94
1870 RUGER 2-28 VAR7-03 2652.21
1855 CHURCH 1-55 2650.56

1978 BARNES 5-423 1329.87
SO-49-58E 1330.06
1986 BARNES 6-362 NO-07-42E 2660.18
2011 BARNES 6-479 NO-48-03W 2660.18

1/4 COR

1995 TALARCZYK CSM8-163 5242.64

1833 HARRISON 5280
2012 5315.3

583

sheet 3 of 3
P-5(1)

~~SS~~

SW

1978 BARNES 5-423 1329.87
SO-49-58E 1330.06