

U.S. PUBLIC LAND SURVEY MONUMENT RECORD

For Public Land Survey Corners In: WI ADMINISTRATIVE CODE A-E 7.08 REQUIREMENT

T. 3 N. - R. 10 E. of the 4th P.M.

CORNER CODE INDEX

MAGNOLIA TWP

ROCK COUNTY WI

(PLACE "◆" SYMBOL AT PROPER PLSS CORNER LOCATION)

A	1	2	3	4	5	6	7	8	9	10	11	12	13	14	15	16	17	18	19	20	21	22	23	24	25	A
B			6																							B
C																										C
D																										D
E																										E
F																										F
G																										G
H																										H
J																										J
K																										K
L																										L
M																										M
N																										N
O																										O
P																										P
Q																										Q
R																										R
S																										S
T																										T
U																										U
V																										V
W																										W
X																										X
Y																										Y
Z																										Z
	1	2	3	4	5	6	7	8	9	10	11	12	13	14	15	16	17	18	19	20	21	22	23	24	25	

COORDINATES

(GNSS DERIVED VIA WISCORS)

NORTHING: 270600.87 ELEV: N/A

EASTING: 419286.75

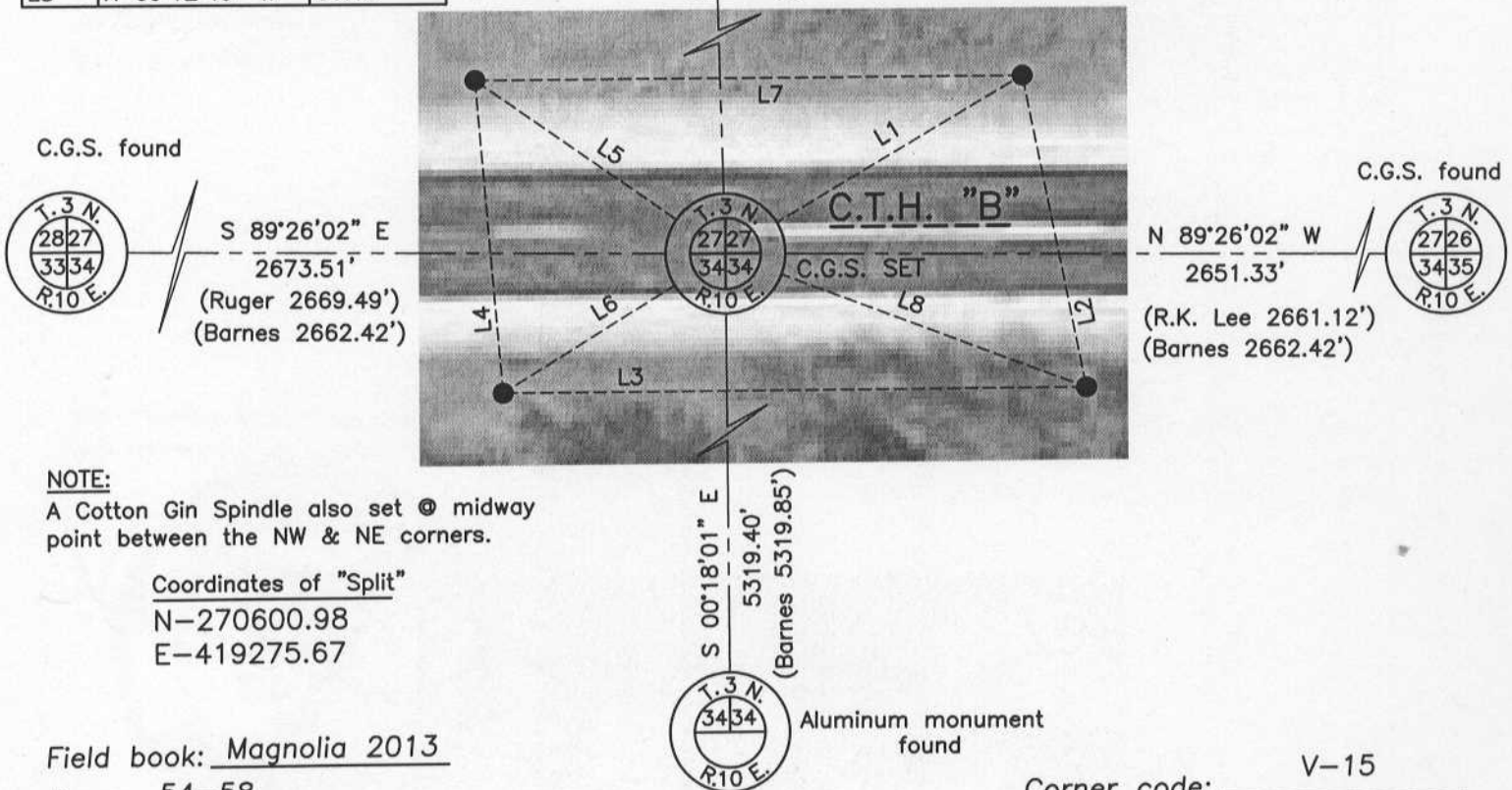
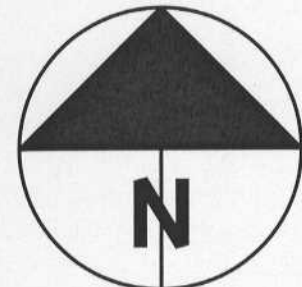
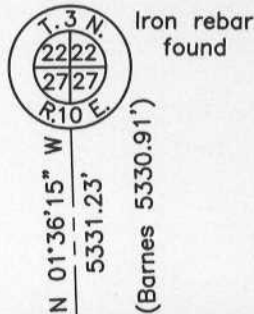
Hor. Datum: WCCS-ROCK, (NA2011)

Vertical Datum: NAVD 88, (If applicable)

(a) **LEGEND**

- - 3/4" x 24" REBAR SET, (RED CAP W/"PLSS WITNESS, S-2331")
- C.G.S. - COTTON GIN SPINDLE
- (B/D) - PREVIOUS TIE-SHEET

LINE	BEARING	DISTANCE
L1	N 59°22'40" E	54.82'
L2	S 11°21'38" E	50.61'
L3	S 89°57'13" W	92.52'
L4	N 04°55'54" W	49.71'
L5	S 55°00'18" E	48.40'
L6	S 58°23'41" W	41.54'
L7	N 89°53'19" E	86.83'
L8	N 69°12'49" W	61.13'



NOTE:

A Cotton Gin Spindle also set ⊙ midway point between the NW & NE corners.

Coordinates of "Split"
N-270600.98
E-419275.67

Field book: Magnolia 2013

Page: 54-58

Corner code: V-15

B) Describe any record evidence, monument evidence, occupational evidence, testimonial evidence or any other material evidence you considered, and whether the monument was found or placed.

The most recent tie-sheet for this corner shows section line distances only, (Barnes, 1999). This is a deep fill section of C.T.H. "B" and no record indicates a corner being found at the location after 1869. The most recent Barnes tie-sheet indicates that the corner is at the mid-way point between the NW & NE corners. This method is per the manual of instruction, (hereafter "manual"), however, results in a position far out of harmony with existing fences. Given this area is hilly and C.T.H. "B" has large areas of "Cuts" & "Fills", discrepancies between modern measuring technologies and those employed in the 1800's should be expected. In addition to the lack of a corner, modern era witnesses were not set nearby for reference. I tied in fencing North and South at this location and projected from the North & South quarter-corners of Sections 27 & 34 through said fencing, to the section line. The resultant positions were 2.56 feet apart; I set a cotton gin spindle midway between the fence projection points on the section line and believe that best represents the most probable PLSS corner position.

I consider the fencing to be the best evidence of the PLSS corner location. The manual method, or pro-rating other 1800 measurements, fall 7-11 feet West of my location creating occupation issues in sections 27 & 34.

NOTE: I also set a cotton gin spindle at the resultant manual method point for reference. It is 11.09' West of my accepted PLSS corner location. Coordinates for the "split" are on the map page.

C) Was the corner restored through acceptance of (1) an obliterated evidence location, or, (2) a found perpetuated location?

Obliterated evidence location, (fencing)

D) Describe any material discrepancy between the location of the corner as restored or reestablished and the location of that corner as previously restored or reestablished by distance and direction. Show the discrepancy on the plan view drawing under (a), above. Show the distances between the corner as previously restored or reestablished and (1) the corner as restored or reestablished, and (2) to at least 4 of the witness monuments shown on the drawing in (a), above.

My location disagrees with no corners of record. Although the most recent tie-sheet and others before that indicate the PLSS corner being at the "split" point, a corner was never recovered or set after 1869. Question A details my rationale and the map page shows distance discrepancies.

In addition to surveying fences, I searched for a Ruger 1/16 corner South of the PLSS corner in Section 34. Old fencing exists at the corner and what appears to be years of silt/accumulated soil near the fence line. In addition, it appears that a swale may have been constructed South of the "40" line. I believe Ruger's stone to be gone.

(E) Was the corner reestablished through lost corner proportionate methods? If so, show the method, including the directions and distances to other public land survey corners used as evidence or used for proportioning the corner location.

N/A

I, Jason R. Houle, hereby certify that the corner location as identified by the corner code index was determined by me under my direction and control and that this U.S. Public Land Survey Monument Record is correct and complete to the best of my knowledge and belief.

CORNER CODE: V-15
(A.E. 7.08 REQUIREMENT)

