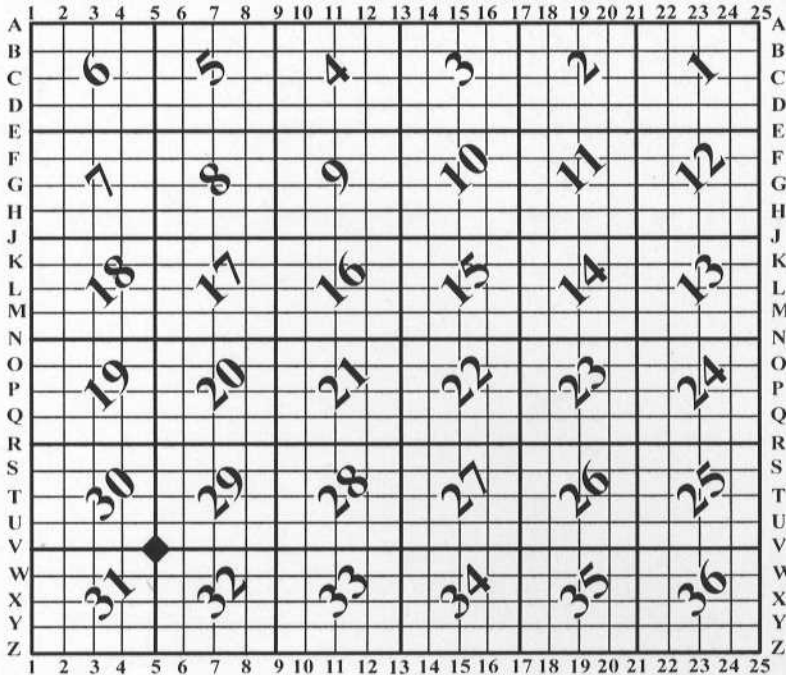


U.S. PUBLIC LAND SURVEY MONUMENT RECORD

For Public Land Survey Corners In: WI ADMINISTRATIVE CODE A-E 7.08 REQUIREMENT
T. 3 N. - R. 10 E. of the 4th P.M.

CORNER CODE INDEX

(PLACE "◆" SYMBOL AT PROPER PLSS CORNER LOCATION)



MAGNOLIA TWP
ROCK COUNTY WI

COORDINATES

(GNSS DERIVED VIA WISCORS)

NORTHING: 270633.39 ELEV: N/A
 EASTING: 405956.66

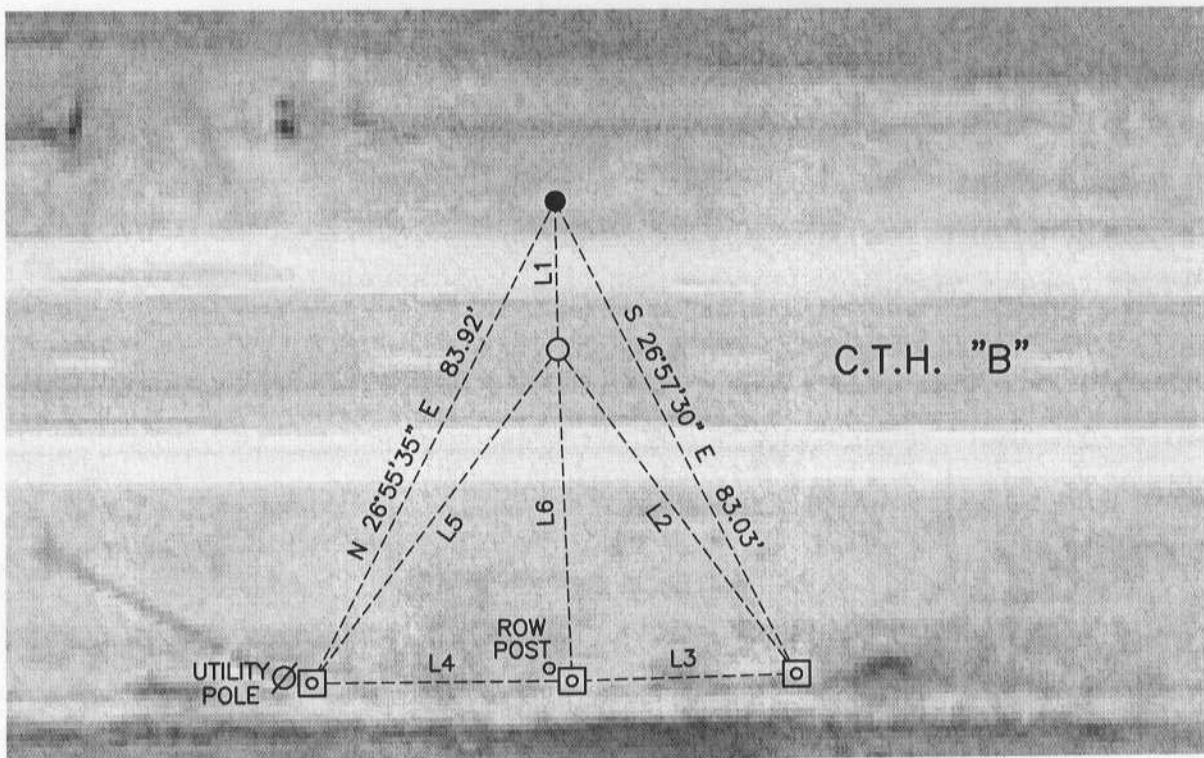
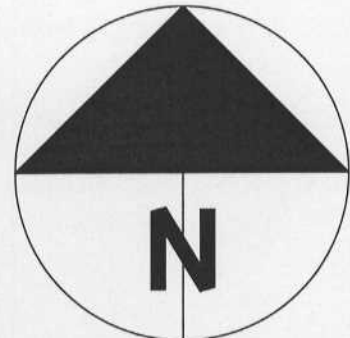
Hor. Datum: WCCS-ROCK, (NA2011)

Vertical Datum: NAVD 88, (If applicable)

(a) LEGEND

- - 5/8" x 24" REBAR SET, (RED CAP W/"PLSS WITNESS")
- - "DURANAIL" ASPHALT NAIL SET
- ◻ - CONCRETE MONUMENT WITH BRASS DISK FOUND
(MONUMENTS ARE ROUGHLY 1 FOOT NORTH OF FENCE)
- (#) - PREVIOUS TIE-SHEET DIMENSION

LINE	BEARING	DISTANCE	
L1	S 01°02'21" E	23.12'	
L2	S 36°10'49" E	63.05'	(63.05')
L3	S 88°40'12" W	35.11'	(35.11')
L4	S 89°59'31" W	40.54'	(40.46')
L5	N 36°36'49" E	64.42'	(64.37')
L6	S 02°20'50" E	51.75'	(51.75')



Field book: Magnolia 2013

Page: 40

Page 1 of 2

Corner code: V-5(1)

B) Describe any record evidence, monument evidence, occupational evidence, testimonial evidence or any other material evidence you considered, and whether the monument was found or placed.

I found three concrete WDOT monuments with brass caps as shown on tie-sheet V-5 filed in 1985; no monument or magnetic pull was found at the PLSS corner. Based on the two easterly WDOT monuments, the PLSS corner was calculated by a distance/distance intersection; a duranail asphalt nail was set at the corner. One additional witness was set per the sketch and ties to the third WDOT monument is within reasonable tolerances.

C) Was the corner restored through acceptance of (1) an obliterated evidence location, or, (2) a found perpetuated location?

An obliterated evidence location

D) Describe any material discrepancy between the location of the corner as restored or reestablished and the location of that corner as previously restored or reestablished by distance and direction. Show the discrepancy on the plan view drawing under (a), above. Show the distances between the corner as previously restored or reestablished and (1) the corner as restored or reestablished, and (2) to at least 4 of the witness monuments shown on the drawing in (a), above.

I did not find a discrepancy between the corner restored and a previously documented corner location. *Discrepancy* being defined as *disagreeing* with a corner location, *not* as noting dimensional differences between current/former tie sheets due to measuring methods. The current and *most recent* tie-sheet dimensions filed for the corner are noted.

(E) Was the corner reestablished through lost corner proportionate methods? If so, show the method, including the directions and distances to other public land survey corners used as evidence or used for proportioning the corner location.

N/A

I, Jason R. Houle, hereby certify that the corner location as identified by the corner code index was determined by me under my direction and control and that this U.S. Public Land Survey Monument Record is correct and complete to the best of my knowledge and belief.

CORNER CODE: V-5(1)
(A.E. 7.08 REQUIREMENT)

