

U.S. PUBLIC LAND SURVEY MONUMENT RECORD

For Public Land Survey Corners in:

WI ADMINISTRATIVE CODE A-E 7.08 REQUIREMENT

T. 3 N., R. 13 E

CORNER CODE INDEX

1	2	3	4	5	6	7	8	9	10	11	12	13	14	15	16	17	18	19	20	21	22	23	24	25
A																								
B	6																							
C		5																						
D			A																					
E				3																				
F					2																			
G						1																		
H	1																							
I		8																						
J			9																					
K				10																				
L					11																			
M						12																		
N	18																							
O		17																						
P			16																					
Q				15																				
R					14																			
S						13																		
T	19																							
U		20																						
V			21																					
W				22																				
X					23																			
Y						24																		
Z							25																	
								26																
									27															
										28														
											29													
												30												
													31											
														32										
															33									
																34								
																	35							
																		36						

Harmony TWP
ROCK COUNTY WI

IF AVAILABLE
ROCK COUNTY COORDINATES PREFERRED

North _____ Elev. _____

East _____

Hor. Datum _____ Vert. Datum _____

LATITUDE _____ ELLIPS. HT. _____

LONGITUDE _____

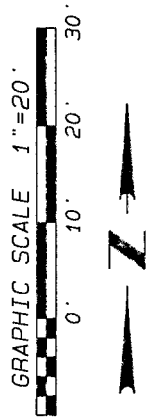
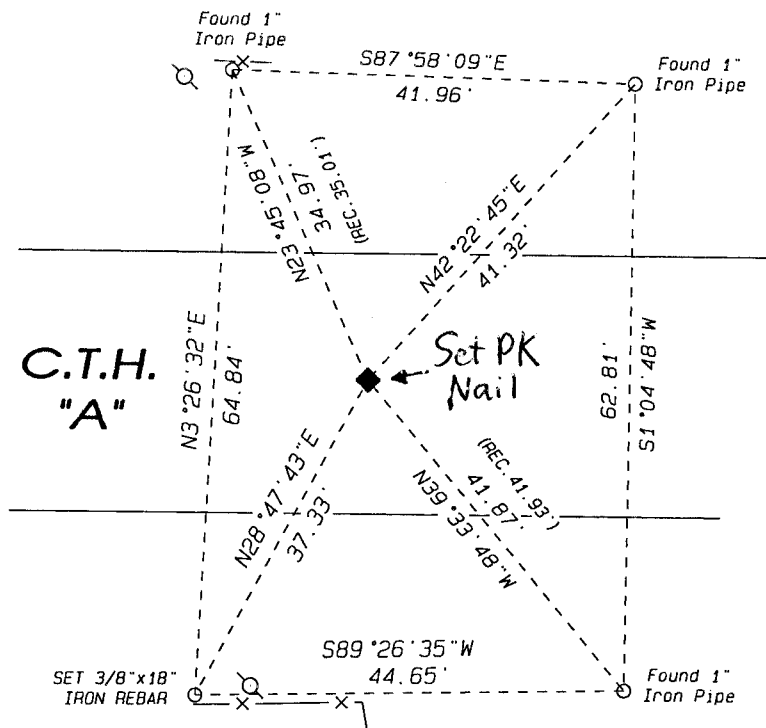
GPS (X) _____ TRAVERSE (X) _____

BASED ON THE FOLLOWING CONTROL:

PLACE MONUMENT SYMBOL \blacklozenge AT PROPER LOCATION ON ABOVE INDEX

\blacklozenge CORNER MONUMENT \circ WITNESS MONUMENT

(a)
BEARINGS ARE BASED ON: Assumed Datum
Assumed N0°40'31"W along the North-South Centerline of Section 23-3-13.



FIELD BOOK _____ PAGE # _____

SHEET 1 OF 2

SHOW A PLAN VIEW DRAWING DEPICTING THE CORNER MONUMENT AND SURROUNDING PHYSICAL FEATURES, INCLUDING THE EXCAVATION AREA AND DEPTH.

PLANNING & ZONING COMMITTEE ADOPTED THE ABOVE FORM ON 12/2/1982

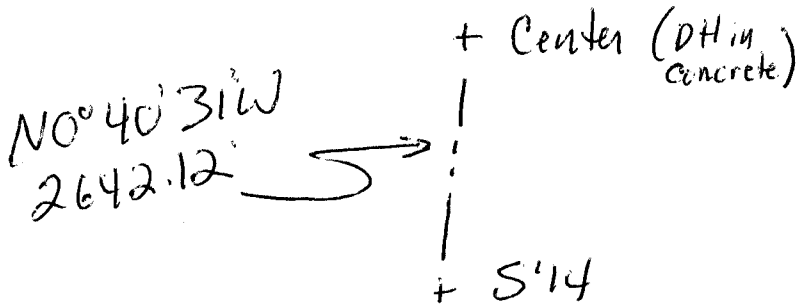
CORNER CODE

R-19(1)

(B) Describe any record evidence, monument evidence, occupational evidence, testimonial evidence or any other material evidence you considered, and whether the monument was found or placed.

Set PK Nail from witness monuments of Record.

C) Was the corner restored through acceptance of (1) an obliterated evidence location, or, (2) a found perpetuated location?



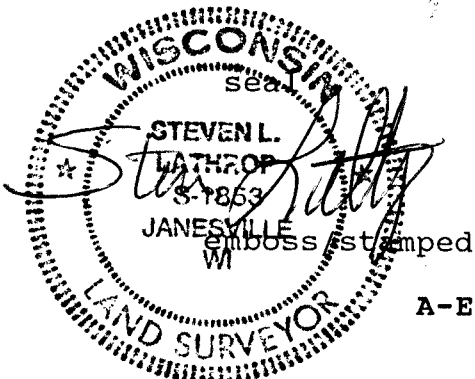
D) Describe any material discrepancy between the location of the corner as restored or reestablished and the location of that corner as previously restored or reestablished by distance and direction. Show the discrepancy on the plan view drawing under (a), above. Show the distances between the corner as previously restored or reestablished and (1) the corner as restored or reestablished, and (2) to at least 4 of the witness monuments shown on the drawing in (a), above.

Set 4th witness Monument

(E) Was the corner reestablished through lost corner proportionate methods? If so, show the method, including the directions and distances to other public land survey corners used as evidence or used for proportioning the corner location.

Steven

I, Lathrop, hereby certify that the corner location as identified by the corner code index was determined by me under by direction and control and that this U.S. Public Land Survey Monument Record is correct and complete to the best of my knowledge and belief.



7-15-13

Number of included sheets _____

A-E 7.08 REQUIREMENT

CORNER CODE

R-19(1)