

U.S. PUBLIC LAND SURVEY MONUMENT RECORD

For Public Land Survey Corners in:
T. 3 N., R. 13 E 4th P.M.

WI ADMINISTRATIVE CODE A-E 7.08 REQUIREMENT

CORNER CODE INDEX

A	1	2	3	4	5	6	7	8	9	10	11	12	13	14	15	16	17	18	19	20	21	22	23	24	25
B																									
C	6																								
D																									
E																									
F																									
G	7																								
H																									
I																									
J																									
K																									
L	18																								
M																									
N																									
O																									
P	19																								
Q																									
R																									
S																									
T																									
U	30																								
V																									
W																									
X																									
Y																									
Z																									

Harmony TWP
ROCK COUNTY, WI

IF AVAILABLE
ROCK COUNTY COORDINATES PREFERRED

North 262,046.41 Elev. _____

East 2,249,562.25

Hor. Datum _____ Vert. Datum _____

LATITUDE _____ ELLIPS. HT. _____

LONGITUDE _____

ELLIPS. DATUM _____

NAD83(91) COUNTY _____ LIST _____

GPS (X) TRAVERSE (X) _____

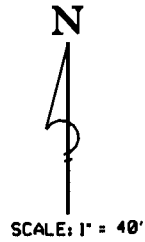
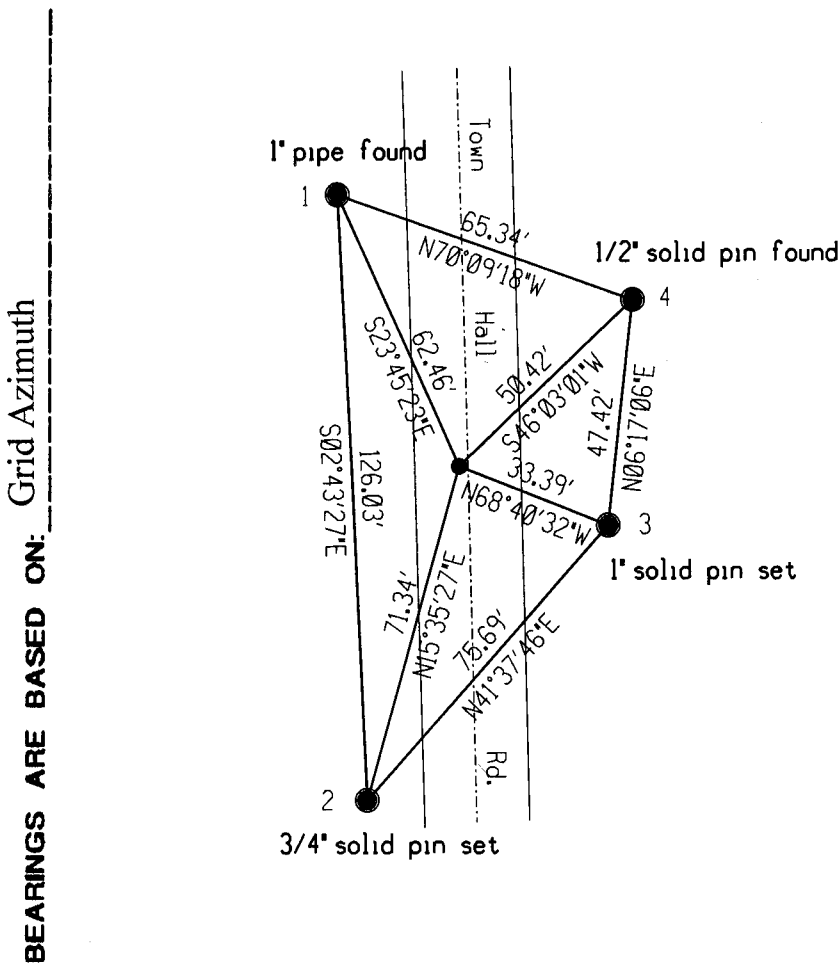
BASED ON THE FOLLOWING CONTROL: _____

PLACE MONUMENT SYMBOL  AT PROPER LOCATION ON ABOVE INDEX

 CORNER MONUMENT

WITNESS MONUMENT

(a)



1. 262,103.58; 2,249,537.08
2. 261,977.69; 2,249,543.08
3. 262,034.27; 2,249,593.36
4. 262,081.40; 2,249,598.55

FIELD BOOK _____ PAGE # _____

SHEET 1 OF 2

SHOW A PLAN VIEW DRAWING DEPICTING THE CORNER MONUMENT AND SURROUNDING PHYSICAL FEATURES, INCLUDING THE EXCAVATION AREA AND DEPTH.

PLANNING & ZONING COMMITTEE ADOPTED THE ABOVE FORM ON 12/2/1982

CORNER CODE N-13 (1)

(B) Describe the record evidence, monument evidence, occupational evidence, testimony evidence or any other material evidence you considered and whether the monument was found or placed.

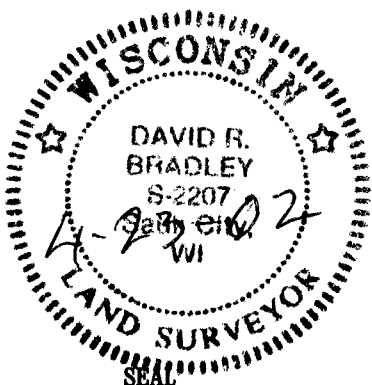
Aluminum capped monument found.

(C) Was the corner restored through acceptance of (1) an obliterated evidence location, or (2) a found perpetuated location?

(D) Describe any material discrepancy between the location of the corner as restored or reestablished and the location of that corner as previously restored or reestablished by distance and direction. Show the discrepancy on the plan view drawing under (a), above. Show the distances between the corner as previously restored or reestablished and (1) the corner as restored or reestablished, and (2) to at least 4 of the witness monuments shown on the drawing in (a) above.

(E) Was the corner reestablished through lost corner proportionate methods? If so, show the method, including the directions and distances to other public land survey corners used as evidence or used for proportioning in determining the corner location.

I, David R Bradley, hereby certify that the corner location as identified by the control code index was determined by me or under my direction and control and that this U.S Public Land Survey Monument Record is correct and complete to the best of my knowledge and belief.



Number of included Sheets 2