

Paper weight-110# (minimum)

Black nonfading ink required

# U.S. PUBLIC LAND SURVEY MONUMENT RECORD

For Public Land Survey Corners In:

WI ADMINISTRATIVE CODE A-E 7.08 REQUIREMENT

T. 3N. R. 13E. 4th P.M.

REV 10/23/2004

USMONREC.DWG

CORNER CODE INDEX

	1	2	3	4	5	6	7	8	9	10	11	12	13	14	15	16	17	18	19	20	21	22	23	24	25
A																									
B																									
C																									
D																									
E																									
F																									
G																									
H																									
J																									
K																									
L																									
M																									
N																									
O																									
P																									
Q																									
R																									
S																									
T																									
U																									
V																									
W																									
X																									
Y																									
Z																									

HARMONY TWP  
ROCK COUNTY WI

IF AVAILABLE  
ROCK COUNTY COORDINATES PREFERRED

North \_\_\_\_\_ Elev. \_\_\_\_\_

East \_\_\_\_\_

Hor. Datum \_\_\_\_\_ Vert. Datum \_\_\_\_\_

LATITUDE \_\_\_\_\_ ELLIPS. HT. \_\_\_\_\_

LONGITUDE \_\_\_\_\_

NAD83(91) \_\_\_\_\_ NETWORK ADJ. YR \_\_\_\_\_

GPS (X) \_\_\_\_\_ TRAVERSE (X) \_\_\_\_\_

BASED ON THE FOLLOWING CONTROL:

PLACE MONUMENT SYMBOL  AT PROPER LOCATION ON ABOVE INDEX

CORNER MONUMENT

WITNESS MONUMENT

BEARINGS ARE BASED ON: \_\_\_\_\_

FIELD BOOK \_\_\_\_\_ PAGE # \_\_\_\_\_

SHEET 41 OF 2

SHOW A PLAN VIEW DRAWING DEPICTING THE CORNER MONUMENT AND SURROUNDING PHYSICAL FEATURES, INCLUDING THE EXCAVATION AREA AND DEPTH.

PLANNING & ZONING COMMITTEE ADOPTED THIS FORM ON 12/2/1982

CORNER CODE J-13(1)

HA547

(B) Describe any record evidence, monument evidence, occupational evidence, testimonial evidence or any other material evidence you considered, and whether the monument was found or placed.

1984 BARNES J-13 FD CUT LIMESTONE 12" DEEP. SET SHORT ALUM. MON. ON TOP OF STONE.

CONTACTED BY JANESVILLE CITY ENGINEERING DEPT. MANHOLE WAS SCHEDULED TO BE PLACED AT CORNER LOCATION. SEWER CONSTRUCTION WAS CLOSE TO RD INTERSECTION. CONTRACTOR AND CITY DECIDED ON SITE NOT TO EXTEND THE PIPE TO THE CENTER OF INTERSECTION BECAUSE THE INTERSECTION WOULD BE DISBURBED IN ABOUT 2 YEARS FOR WATER LINE INSTALLATION. FD ALUM. MON. 0.3' DEEP; 1.0' SOUTH OF E/W PVMT CENTER LINE; 1.0' WEST OF N/S PVMT CENTER LINE

C) Was the corner restored through acceptance of (1) an obliterated evidence location, or, (2) a found perpetuated location?

ACCEPTED FD ALUM. MON. WHICH IS HARMONY WITH FD REFERENCE MONUMENTS.

D) Describe any material discrepancy between the location of the corner as restored or reestablished and the location of that corner as previously restored or reestablished by distance and direction. Show the discrepancy on the plan view drawing under (a), above. Show the distances between the corner as previously restored or reestablished and (1) the corner as restored or reestablished, and (2) to at least 4 of the witness monuments shown on the drawing in (a), above.

NONE

(E) Was the corner reestablished through lost corner proportionate methods? If so, show the method, including the directions and distances to other public land survey corners used as evidence or used for proportioning the corner location.

NO

I, **Donald Barnes**, hereby certify that the corner location as identified by the corner code index was determined by me under my direction and control and that this U.S. Public Land Survey Monument Record is correct and complete to the best of my knowledge and belief.

Seal  
*Donald Barnes*  
Embloss  
June 25, 2008

SHEET 1 OF 2

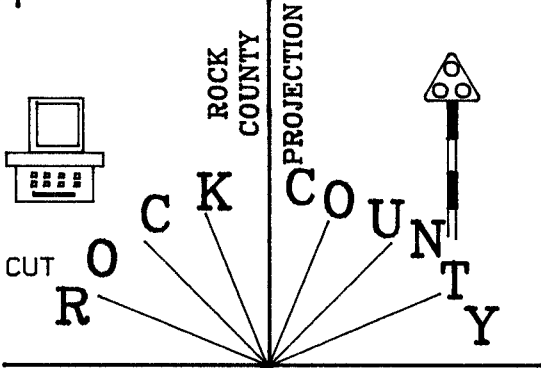
CORNER CODE **J-13(1)**

A.E. 7.08 REQUIREMENT

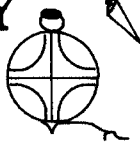
NW COR SEC 15  
HARMONY TWP  
T3N R13E



1984- FD 1' PIPE, FD CUT  
LIMESTONE 12" DEEP,  
SET SHORT ALUM. MON  
ON TOP OF STONE



FD 1' PIN  
PROPERTY COR.  
MARKED WITH METAL  
FENCE POST  
ELEV 902.7  
PHOTO 904



NOT TO SCALE

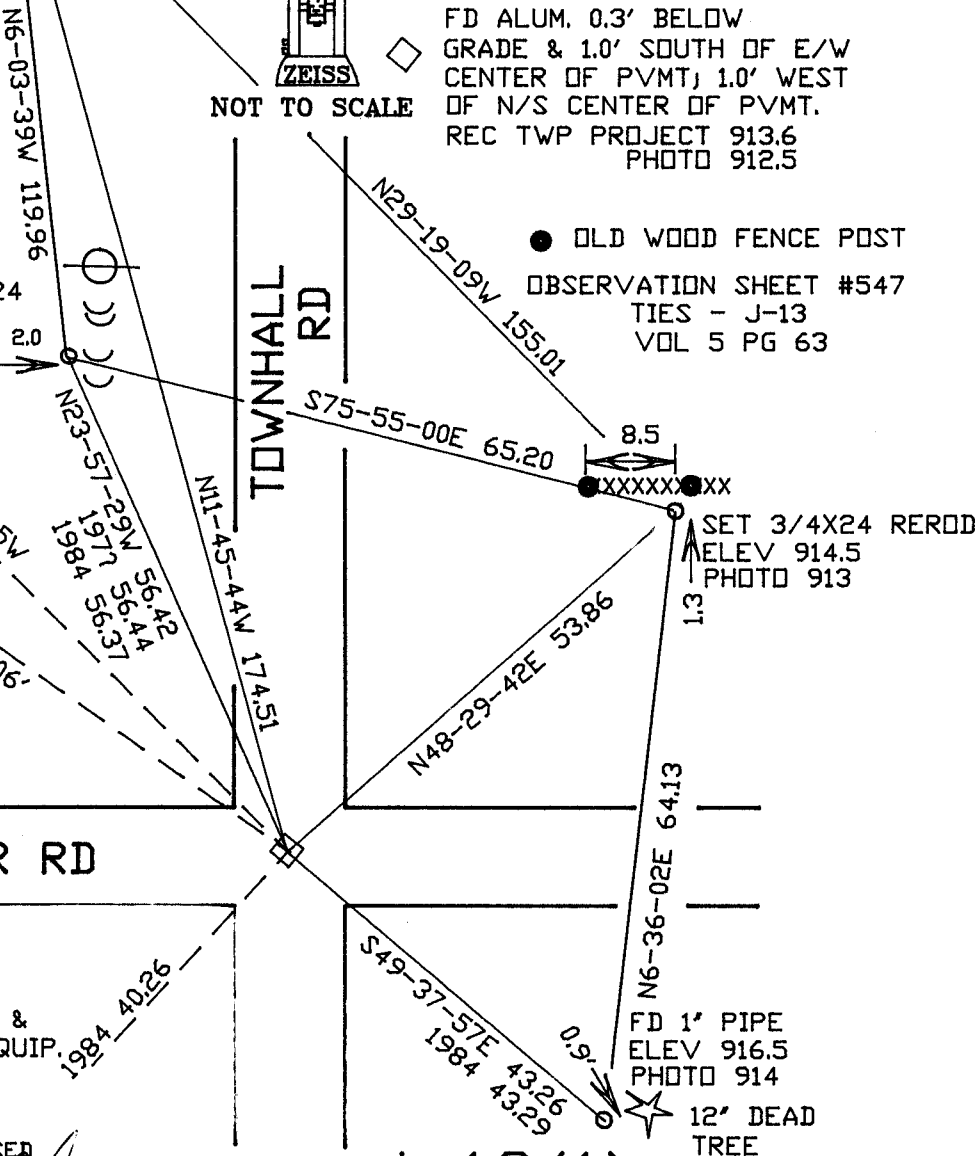
FD ALUM. 0.3' BELOW  
GRADE & 1.0' SOUTH OF E/W  
CENTER OF PVMT; 1.0' WEST  
OF N/S CENTER OF PVMT.  
REC TWP PROJECT 913.6  
PHOTO 912.5

ELEV 909.4  
PHOTO 908

FD BENT 1' PIPE  
REPLACED WITH 3/4X24  
REROD IN PIPE HOLE;  
TOP IS 0.6 BELOW  
GRADE

● OLD WOOD FENCE POST  
OBSERVATION SHEET #547  
TIES - J-13  
VOL 5 PG 63

N44-43-25W  
CELL TOWER  
N54-46-30W 8,806'  
CABLE TV ANT.



1985 1"X24 PIPE  
NEXT TO STOP  
AREA DISTURBED &  
CONSTRUCTION EQUIP.  
@ LOCATION  
SIGN.

EMBOSSER SEAL  
*Ronald*  
*Banas*  
June 25 2008