

Paper weight-110# (minimum)

Black nonfading ink required

# U.S. PUBLIC LAND SURVEY MONUMENT RECORD

For Public Land Survey Corners In:

WI ADMINISTRATIVE CODE A-E 7.08 REQUIREMENT

T. 3 N. R. 13 E. 4th P.M.

REV 10/23/2004

USMONREC.DWG

CORNER CODE INDEX

A	1	2	3	4	5	6	7	8	9	10	11	12	13	14	15	16	17	18	19	20	21	22	23	24	25	A
B																										B
C	6																									C
D																										D
E																										E
F																										F
G	7																									G
H																										H
I																										I
J																										J
K																										K
L	18																									L
M																										M
N																										N
O																										O
P																										P
Q	19																									Q
R																										R
S																										S
T																										T
U																										U
V																										V
W																										W
X	30																									X
Y																										Y
Z																										Z

PLACE MONUMENT SYMBOL  $\blacklozenge$  AT PROPER LOCATION ON ABOVE INDEX

Harmony TWP  
ROCK COUNTY WI

IF AVAILABLE  
ROCK COUNTY COORDINATES PREFERRED

North \_\_\_\_\_ Elev. \_\_\_\_\_

East \_\_\_\_\_

Hor. Datum \_\_\_\_\_ Vert. Datum \_\_\_\_\_

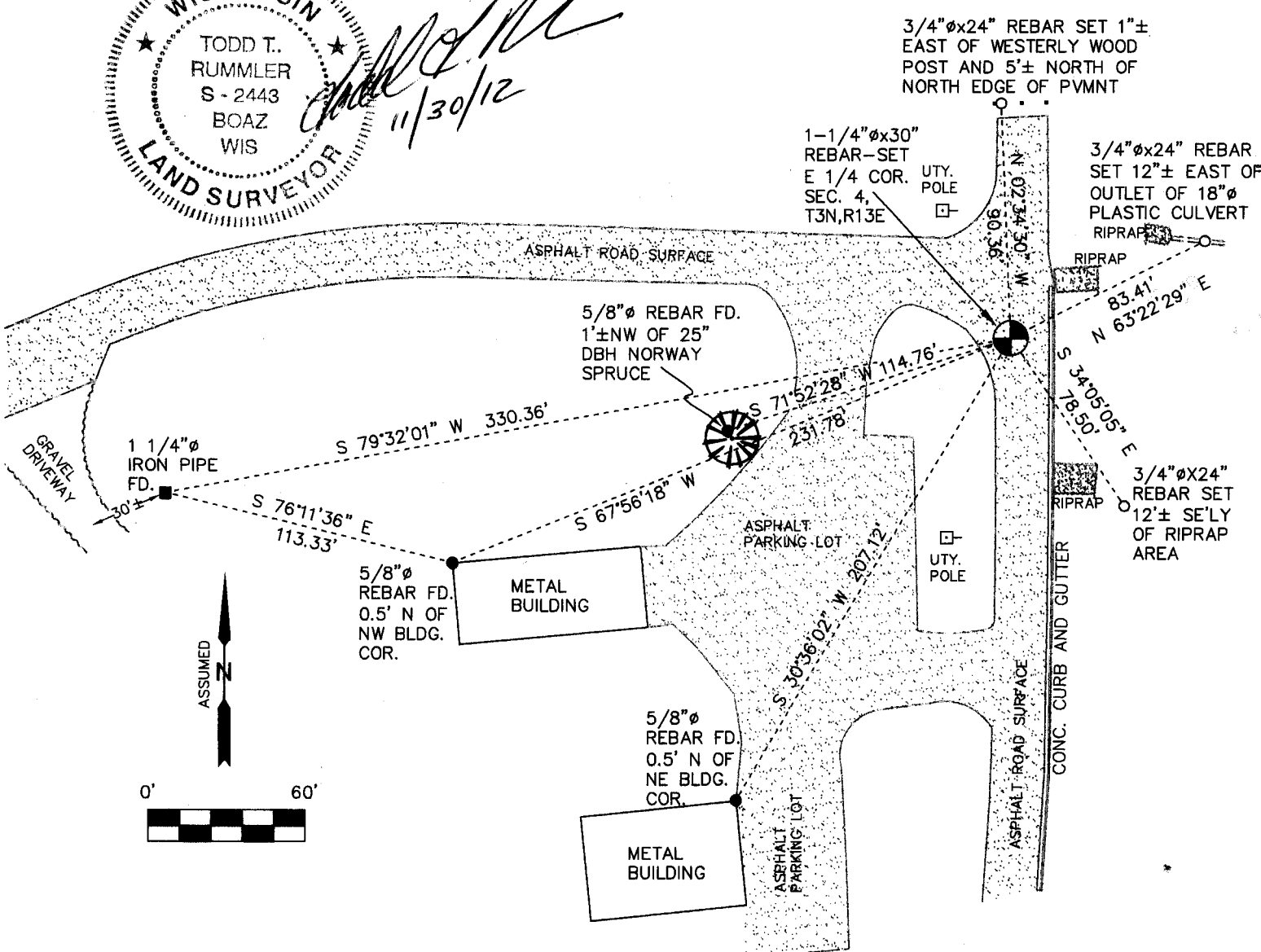
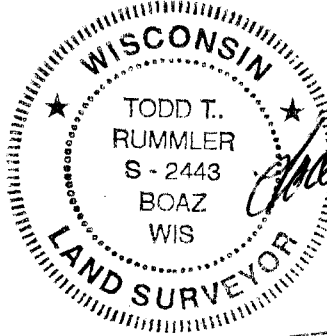
LATITUDE \_\_\_\_\_ ELLIPS. HT. \_\_\_\_\_

LONGITUDE \_\_\_\_\_

NAD83(91) \_\_\_\_\_ NETWORK ADJ. YR \_\_\_\_\_

GPS (X) \_\_\_\_\_ TRAVERSE (X) \_\_\_\_\_

BASED ON THE FOLLOWING CONTROL:



FIELD BOOK \_\_\_\_\_ PAGE # \_\_\_\_\_  
OR OBSERVATION SHEET \_\_\_\_\_

SHEET 1 OF 2

SHOW A PLAN VIEW DRAWING DEPICTING THE CORNER MONUMENT AND SURROUNDING PHYSICAL FEATURES, INCLUDING THE EXCAVATION AREA AND DEPTH.

PLANNING & ZONING COMMITTEE ADOPTED THIS FORM ON 12/2/1982

CORNER CODE C-13(2)3

- (B) DESCRIBE ANY RECORD EVIDENCE, MONUMENT EVIDENCE, OCCUPATIONAL EVIDENCE, TESTIMONIAL EVIDENCE OR ANY OTHER MATERIAL EVIDENCE YOU CONSIDERED, AND WHETHER THE MONUMENT WAS FOUND OR PLACED.

THE HISTORY OF THIS CORNER IS THOROUGHLY DOCUMENTED ON THE TIE SHEET BY ROCK COUNTY SURVEYOR DONALD BARNES DATED MAY 15, 2012. THIS CORNER WAS LOCATED WITHIN THE DISTURBANCE AREA OF THE S.T.H. 26 RECONSTRUCTION PROJECT, SO MR. BARNES ESTABLISHED REFERENCE TIES THAT WOULD SURVIVE CONSTRUCTION ACTIVITIES IN THE AREA. I VISITED THE SITE IN JUNE, 2012 AND FOUND THE CORNER MONUMENT TO BE A 1" DIAMETER IRON PIPE IN A SQUARE CAST IRON MONUMENT BOX APPROXIMATELY 1/2' BELOW THE SURFACE OF THE ASPHALT PAVEMENT. I ACCEPTED THE PIPE AS THE CORNER AND ALSO LOCATED ALL OF MR. BARNES' REFERENCE TIES. I RETURNED TO THE SITE, FOLLOWING COMPLETION OF CONSTRUCTION ACTIVITIES IN THE AREA, IN OCTOBER, 2012. I FOUND THAT THE PIPE IN THE MONUMENT BOX HAD BEEN COMPLETELY REMOVED DURING THE REPAVEMENT OF THE ROAD. I THEN RECOVERED ALL OF THE PREVIOUS REFERENCE TIES AND DOUBLE CHECKED THEM FOR LOCATION WITH MY TOTAL STATION. I THEN DETERMINED THE ORIGINAL LOCATION OF THE 1" DIAMETER IRON PIPE FROM THE REFERENCE TIES. I DROVE A 1-1/4" DIAMETER X 30" LONG REBAR THROUGH THE NEW ASPHALT ROAD SURFACE AT SAID LOCATION. I ALSO ESTABLISHED THREE ADDITIONAL REFERENCE TIES TO FURTHER PERPETUATE THE CORNER LOCATION.

- (C) WAS THE CORNER RESTORED THROUGH ACCEPTANCE OF (1) AN OBLITERATED EVIDENCE LOCATION, OR (2) A FOUND PERPETUATED LOCATION?

2.) A FOUND PERPETUATED LOCATION

- (D) DESCRIBE ANY MATERIAL DISCREPANCY BETWEEN THE LOCATION OF THE CORNER AS RESTORED OR REESTABLISHED AND THE LOCATION OF THAT CORNER AS PREVIOUSLY RESTORED OR REESTABLISHED BY DISTANCE AND DIRECTION. SHOW THE DISCREPANCY ON THE PLAN VIEW DRAWING UNDER (A), ABOVE. SHOW THE DISTANCES BETWEEN THE CORNER AS PREVIOUSLY RESTORED OR REESTABLISHED AND (1) THE CORNER AS RESTORED OR REESTABLISHED, AND (2) TO AT LEAST 2 OF THE WITNESS MONUMENTS AS SHOWN ON THE DRAWING IN (A), ABOVE.

NONE

- (E) WAS THE CORNER REESTABLISHED THROUGH LOST CORNER PROPORTIONATE METHODS? IF SO SHOW THE METHOD, INCLUDING THE DIRECTION AND DISTANCED TO OTHER PUBLIC LAND SURVEY CORNERS USED AS EVIDENCE OR USED FOR PROPORTIONING IN DETERMINING THE CORNER LOCATION.

NO.

AFFIX LAND SURVEYOR SEAL

- (F) I, TODD T. RUMMLER, RLS-2443 CERTIFY THAT THE CORNER LOCATION SHOWN ON THIS RECORD WAS DETERMINED BY ME OR UNDER MY DIRECTION AND CONTROL AND THAT THIS U.S. PUBLIC LAND SURVEY MONUMENT RECORD IS CORRECT AND COMPLETE TO THE BEST OF MY KNOWLEDGE AND BELIEF.



A handwritten signature in black ink, appearing to read "Todd T. Rummeler".

SIGNATURE

11-30-12

DATE

SHEET 2 OF 2 3  
CORNER CODE C-13(12)