

U.S. PUBLIC LAND SURVEY MONUMENT RECORD

For Public Land Survey Corners In:

WI ADMINISTRATIVE CODE A-E 7.08 REQUIREMENT

T. 3 N. - R. 13 E. of the 4th P.M.

CORNER CODE INDEX

(PLACE "◆" SYMBOL AT PROPER PLSS CORNER LOCATION)

	2	3	4	5	6	7	8	9	10	11	12	13	14	15	16	17	18	19	20	21	22	23	24	25		
A																										A
B																										B
C																										C
D																										D
E																										E
F																										F
G																										G
H																										H
I																										I
J																										J
K																										K
L																										L
M																										M
N																										N
O																										O
P																										P
Q																										Q
R																										R
S																										S
T																										T
U																										U
V																										V
W																										W
X																										X
Y																										Y
Z																										Z

HARMONY TWP
ROCK COUNTY WI

ROCK COUNTY COORDINATES
(GNSS DERIVED VIA WISCORS)

North 264735.14 Elev.

East 511933.19

Hor. Datum NAD83 (NA2011)

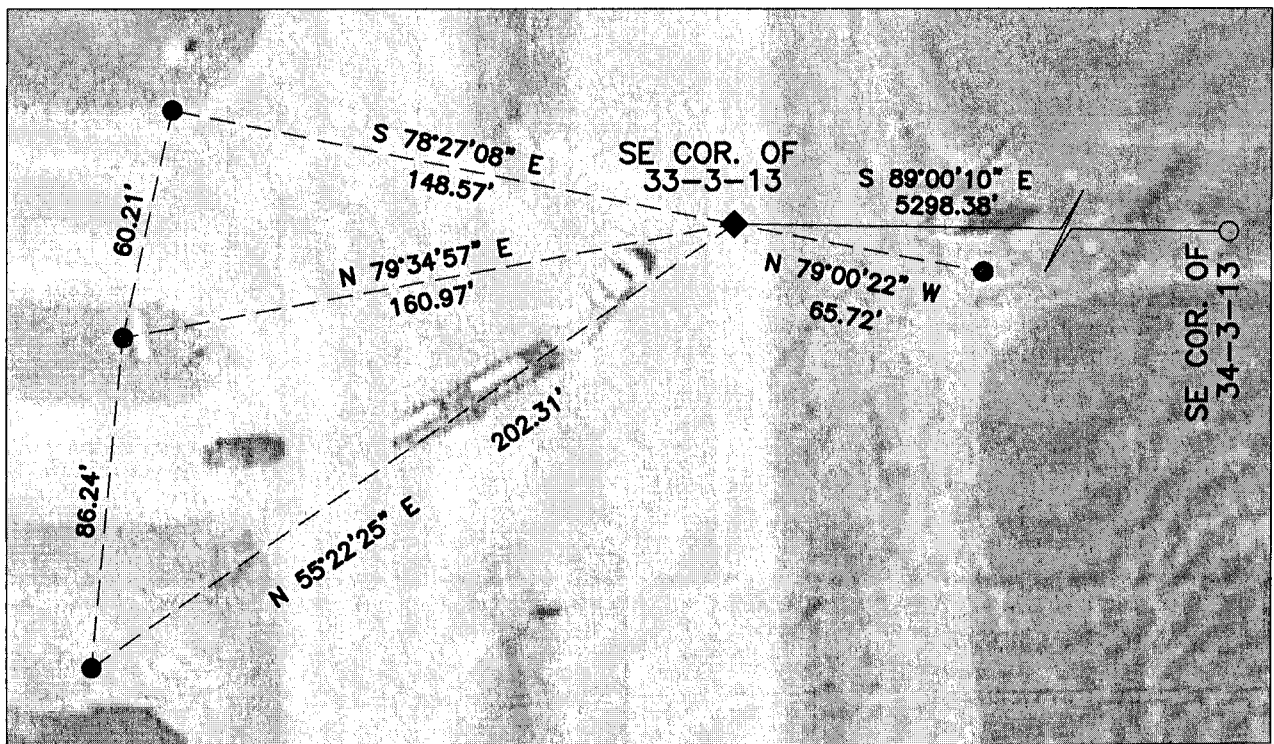
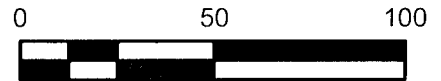
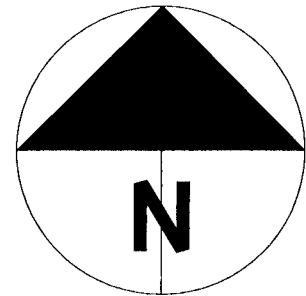
Vert. Datum

BASIS OF BEARINGS

Wisconsin County Coordinate System
Rock County Datum

(a) LEGEND

- - 5/8" REBAR SET, (RED CAP W/"PLSS WITNESS")
- - ALUMINUM MONUMENT FOUND
- ⊙ - IRON REBAR FOUND
- ⊗ - IRON PIPE FOUND
- ⊕ - IRON PIPE IN MONUMENT BOX FOUND
- - STONE FOUND
- - LIMESTONE FOUND
- △ - RAILROAD SPIKE FOUND
- ⬡ - CAST IRON MON. FOUND, (BROKEN)
- ◆ - SURVEY NAIL SET, (DURANAIL)



SHEET 1 OF 2

FIELD BOOK 2013 PAGE # 9

CORNER CODE Z-13 (3)

B) Describe any record evidence, monument evidence, occupational evidence, testimonial evidence or any other material evidence you considered, and whether the monument was found or placed.

Corner location based on previous County Coordinates for corners in the area as ties are gone. The location is established from the W1/4 corner of Section 33, W1/4 of Section 4 and SE corner of Section 34, all in the Town of Harmony. A survey nail, (Duranaïl), was set in the asphalt shoulder abutting the concrete pavement.

C) Was the corner restored through acceptance of (1) an obliterated evidence location, or, (2) a found perpetuated location?

An obliterated evidence location.

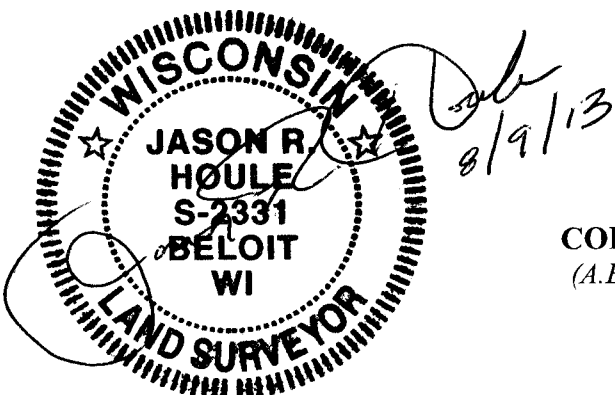
D) Describe any material discrepancy between the location of the corner as restored or reestablished and the location of that corner as previously restored or reestablished by distance and direction. Show the discrepancy on the plan view drawing under (a), above. Show the distances between the corner as previously restored or reestablished and (1) the corner as restored or reestablished, and (2) to at least 4 of the witness monuments shown on the drawing in (a), above.

N/A

(E) Was the corner reestablished through lost corner proportionate methods? If so, show the method, including the directions and distances to other public land survey corners used as evidence or used for proportioning the corner location.

N/A

I, Jason R. Houle, hereby certify that the corner location as identified by the corner code index was determined by me under my direction and control and that this U.S. Public Land Survey Monument Record is correct and complete to the best of my knowledge and belief.



CORNER CODE: Z-13(3)
(A.E. 7.08 REQUIREMENT)