

Paper weight-110# (minimum)

Black nonfading ink required

# U.S. PUBLIC LAND SURVEY MONUMENT RECORD

For Public Land Survey Corners In:

WI ADMINISTRATIVE CODE A-E 7.08 REQUIREMENT

T. 3 N. R. 10 E. 4th P.M.

REV 10/23/2004

USMONREC.DWG

CORNER CODE INDEX

A	1	2	3	4	5	6	7	8	9	10	11	12	13	14	15	16	17	18	19	20	21	22	23	24	25	A
B		6				5				4				3			2				1					B
C																										C
D																										D
E																										E
F																										F
G																										G
H																										H
J																										J
K																										K
L																										L
M																										M
N																										N
O																										O
P																										P
Q																										Q
R																										R
S																										S
T																										T
U																										U
V																										V
W																										W
X																										X
Y																										Y
Z																										Z

Magnolia TWP  
ROCK COUNTY WI

IF AVAILABLE  
ROCK COUNTY COORDINATES PREFERRED

North \_\_\_\_\_ Elev. \_\_\_\_\_

East \_\_\_\_\_

Hor. Datum \_\_\_\_\_ Vert. Datum \_\_\_\_\_

LATITUDE \_\_\_\_\_ ELLIPS. HT. \_\_\_\_\_

LONGITUDE \_\_\_\_\_

NAD83(91) \_\_\_\_\_ NETWORK ADJ. YR \_\_\_\_\_

GPS (X) \_\_\_\_\_ TRAVERSE (X) \_\_\_\_\_

BASED ON THE FOLLOWING CONTROL:

PLACE MONUMENT SYMBOL  AT PROPER LOCATION ON ABOVE INDEX

CORNER MONUMENT

WITNESS MONUMENT

(a)

BEARINGS ARE BASED ON: ROCK COUNTY PROJECTION

FIELD BOOK \_\_\_\_\_ PAGE # \_\_\_\_\_

OR OBSERVATION SHEET \_\_\_\_\_

SHEET 1 OF 5

SHOW A PLAN VIEW DRAWING DEPICTING THE CORNER MONUMENT AND SURROUNDING PHYSICAL FEATURES, INCLUDING THE EXCAVATION AREA AND DEPTH.

PLANNING & ZONING COMMITTEE ADOPTED THIS FORM ON 12/2/1982

CORNER CODE L-5(2)

MA555 E1/4CORSEC18T3NR10E

(B) Describe any record evidence, monument evidence, occupational evidence, testimonial evidence or any other material evidence you considered, and whether the monument was found or placed.

1833 HARRISON DEC 6 NORTH BET SECS 17 & 18

858.0 ENTER MARSH

1980.00 LEFT SAME

2640.00 QUARTER SEC COR. {BURR O 10" N21W 31.02';  
BURR O 12" S68W 22.44' BURR O 20 & BURR O  
12"} MARKED

5280.00 COR TO SECS 7,8,17,18 {LBURR O 12" S82W  
19.14'; BURR O 12" N57W 99'; BURR O 14" N83E  
81.81'; BURR O 12" S9E 23.76' LAND BROKEN  
2ND RATE MOSTLY TIMBER OF BURR & WHITE OAK  
UNDERGROWTH ?? GRASS & WEEDS DEC 6TH  
1833

1848 VAUGH TWP RD BK 1 PG 6A COMMENCING IN THE CENTER OF THE HIGHWAY RUNNING FROM JANESVILLE TO MINERAL POINT AT THE SE CORNER OF SECTION 16 T3N R10E, AND RUN THENCE WEST ALONG SOUTH LINE OF SAID SEC 16 20 CHAINS & 28 LINKS (1338.48') TO THE SOUTH CORNER OF THE EAST HALF OF THE SE 1/4 OF SAID SECTION 16; THENCE N68W 37 CHAINS 67 LINKS (2486.22') TO A STAKE STANDING N30E 39 LINKS (25.74') FROM A DOUBLE BUR OAK TREE 20 INCHES THROUGH; THENCE N55W 26 CHAINS 32 LINKS (1737.12') TO THE CENTER OF A HIGHWAY RUNNING NORTHERLY TO OR NEAR NORTONS SAW MILL; THENCE N31W ALONG THE CENTER OF SAID HIGHWAY TO THE WEST LINE OF SAID SECTION 16 AND A CONTINUATION OF THE SAME FROM SAID SECTION LINE 5 CHAINS 81 LINKS (383.46') TO THE CENTER LINE RUNNING EAST AND WEST THROUGH THE CENTER OF SECTION 17, 2 CHAINS 98 LINKS (196.68') WEST OF THE QUARTER POST ON THE EAST LINE OF SAID SEC 17; THENCE WEST ALONG SAID CENTER LINE 78 CHAINS 68 LINKS (5192.88') TO THE QUARTER POST UPON THE SECTION LINE BETWEEN SECTIONS 17 & 18 THE LINE BEING THE CENTER OF THE HIGHWAY. VARIATION OF THE MAGNETIC NEEDLE 8 MINUTES EAST FROM THE TRUE MERIDIAN. SEP 7 1848 ALANSON B. VAUGH SURVEYOR. WE THE COMMISSIONERS OF HIGHWAYS TO THIS DAY LAY OUT AND ESTABLISH THE ABOVE SURVEY AS A PUBLIC HIGHWAY OF 66' IN WIDTH THE SAME BEING THE CENTER OF THE ROAD SEP 7 1848.

1850 MILLER TWP RD REC BK 1 PG 9 & 10 IT WAS ORDERED THAT THE FOLLOWING ALTERATION BE MADE IN SAID RD TO WIT; COMMENCING AT A POINT S89 1/2W DISTANT 3 CHAINS (198') FROM 1/4 POINT ON THE EAST SIDE OF SEC 17 AND RUNNING THENCE FROM SAID 1/4 POINT ON THE EAST SIDE OF SECTION 17 AND RUNNING THENCE FROM SAID 1/4 POINT S30E 16 CHAINS 9 LINKS TO THE TERMINATION POINT A BUR OAK TREE 12 INCHES IN DIAMETER AND MAKE DO THE SW SIDE \_\_\_ N41 1/2E 59 LINKS (38.94') AND ANOTHER BUR OAK TREE 15 INCHES IN DIAMETER AND MARKED ON THE EAST SIDE N78 1/2W DISTANT 1 CHAIN AND FIFTY FIVE LINKS (102.3') \_\_\_ CAUSES AND DISTANCES ARE THE CENTER OF SAID HIGHWAY & THE WIDTH IS 66' VARIATION OF THE MAGNETIC NEEDLE IS 7-25 EAST AND THAT SO MUCH OF SAID JANESVILLE AND ALBANY RD AS NOW LAYS BETWEEN THE BEGINNING AND TERMINATION OF THE ABOVE MENTIONED SURVEYED LINE IS HEREBY TAKEN UP AND FOREVER DISCONTINUED. EZRA MILLER-SURVEYOR

Small Barnes  
Sep 20, 2012

SHEET 1 OF 5  
CORNER CODE L-5(1)

MA555 E1/4CORSEC18T3NR10E

- 1850 TWP RD REC BK 1 PG 9 & 10 IT WAS ORDERED THAT THE FOLLOWING ALTERATION BE MADE IN SAID RD TO WIT; COMMENCING AT A POINT S89 1/2W DISTANT 3 CHAINS (198') FROM 1/4 POINT ON THE EAST SIDE OF SEC 17 AND RUNNING THENCE FROM SAID 1/4 POINT ON THE EAST SIDE OF SECTION 17 AND RUNNING THENCE FROM SAID 1/4 POINT S30E 16 CHAINS 9 LINKS TO THE TERMINATION POINT A BUR OAK TREE 12 INGES IN DIAMATER AND MAKE DO THE SW SIDE \_\_\_ N41 1/2E 59 LINKS (38.94') AND ANOTHER BUR OAK TREE 15 INCHES IN DIAMATER AND MARKED ON THE EAST SIDE N78 1/2W DISTANT 1 CHAIN AND FIFTY FIVE LINKS (102.3') \_\_\_ CAUSES AND DISTANCES ARE THE CENTER OF SAID HIGHWAY & THE WIDTH IS 66' VARATION OF THE MAGNETIC NEEDLE IS 7-25 EAST AND THAT SO MUCH OF SAID JANESVILLE AND ALBANY RD AS NOW LAYS BETWEEN THE BEGINNING AND TERMINATION OF THE ABOVE MENTIONED SURVEYED LINE IS HEREBY TAKEN UP AND FOREVER DISCONTINUED. EZRA MILLER-SURVEYOR
- 1852 RD REC BK1 PG 15 COMMENCING AT THE SE CORNER OF SECTION 19 AND RUNNING THENCE NORTH ON SECTIONAL LINES TO THE QUARTER POST BETWEEN SECTIONS 17 & 18. IN WITNESS WHERE OF WE HAVE HEREUNTO SET OUR HANDS """" SEP 1852""""
- 1855 CHURCH VOL 1 PG 55 NO BEARING TREES MADE CORNER WIT TO CORNER BR O 18" N18 1/2W 45.54' STONE SCHOOL HOUSE NW CORNER S20 1/2E 95.70' 2650.56 TO SE & NE CORNERS OF SEC 18.
- 1855 CHURCH VOL 1 PG 56 FD STAKE BY STUMPS MARKED, OVERRUNS 116.82' TO E 1/4 COR SEC 17.
- 1870 RUGER VOL 2 PG 28 CORNER LOST AND BEARING TREES DESTROYED IN WORKING ROAD. ESTABLISHED QUARTER CORNER FROM SEC CORNERS THEN MEASURED OFF & FD REMAINS OF STUMP ONE BEARING TREE. SET IRREGULAR POINTED SANDSTONE 32X15X13 POINT UP. VAR 7-03 2652.21 TO FD BOTH BEARING TREES & REMAINS OF OLD STAKE SET IRREGULAR POINTED LIMESTONE 20X17X5 POINT UP @ NW COR SEC 17, VAR 7-03 1326.10 TO SET IRREGULAR POINTED HH 22X12X9 POINT UP @ W 1/16TH COR SW 1/4 SEC 17, VAR 7-03 2652.21 TO FD STUMPS OF BOTH BEARING TREES & REMAINS OF OLD STAKE. WEST BEARING TEE IS 50.82' DISTANT INSTEAD OF 46.86'-SET IRREGULAR POINTED HARD HEAD STONE 24X15X9 @ SW COR SEC 17, 1346.81 TO SET IRREGULAR POINTED HARD HEAD STONE 23X16X14 POINT UP @ N 1/16TH COR OF SW 1/4 SEC 17, 2693.25 TO SET IRREGULAR POINTED HH 24X17X12 POINT UP @ CENTER OF SEC 17.
- 1985 BARNES VOL 6 PG 343 N1-08-48E 2657.17 TO FD ALUM @ NW COR SEC 17, S1-08-48W 2657.17 TO SET PK FROM TIES @ SW COR SEC 17, S89-19-26E 2699.98 TO SET R/R SPIKE \ FROM TIES @ CENTER OF SEC 17, & & 5407.09 TO HH @ E 14 COR SEC 17.
- 1985 BARNES L-05 AFTER DIGGING FOR THE CORNER, A HIGHWAY DEPARTMENT MAN STATED THAT ABOUT 10 TO 12 YEARS EARLIAR THAT THEY HAD CUT THE INTERSECTION DOWN. RUGER STATED THAT HE HAD PLACED THE CORNER ON LINE WITH THE NW & SW CORNERS OF SECTION 17 AT MID POINT. I DID THE SAME. THIS IS IN HARMONY WITH E/W CENTER LINE OF THE SECTION. N1-08-48E 2657.17 TO NW COR SEC 17 & S1-08-48W 2652.21 TO SW COR SEC 17. REFERENCED SAME. SET 3/8" PIN.
- 1985 THOM #13688 SET 3/4 PIN BY COUNTY SURVEYORS REFERENCE TIES. EASTERLY 577.50 TO SET 3/4 IRON PIN ON E/W CENTERLINE OF SEC 17

*Donall Barnes*  
*Sep 29 2012*

SHEET <sup>2</sup> OF 5  
CORNER CODE L-5(2)

MA555 E1/4CORSEC18T3NR10E

1995 BARNES L-05(1) 283,926.14; 405,727.48 COORDINATES ARE BASED ON ROCK COUNTY PROJECTION SYSTEM.

ESTABLISHED BY CONVENTIONAL TRAVERSE FROM GPS "ALBANY" 304S AND THE AZIMUTH "ALBANY AZIMUTH" 304A WHICH IS IN THE SW 1/4 OF SECTION 7. FD ALUM MON & REFERENCE MONUMENTS.

1996 COMBS GCM VOL 19 PG 43 ALUM 5293.78 TO PK @ W 1/4 COR SEC 18

FD ALUM 0.15' DEEP & REFERENCE MONUMENTS.

C) Was the corner restored through acceptance of (1) an obliterated evidence location, or, (2) a found perpetuated location?

ACCEPTED FD ALUM.

D) Describe any material discrepancy between the location of the corner as restored or reestablished and the location of that corner as previously restored or reestablished by distance and direction. Show the discrepancy on the plan view drawing under (a), above. Show the distances between the corner as previously restored or reestablished and (1) the corner as restored or reestablished, and (2) to at least 4 of the witness monuments shown on the drawing in (a), above.

NONE

(E) Was the corner reestablished through lost corner proportionate methods? If so, show the method, including the directions and distances to other public land survey corners used as evidence or used for proportioning the corner location.

I, **Donald Barnes**, hereby certify that the corner location as identified by the corner code index was determined by me under my direction and control and that this U.S. Public Land Survey Monument Record is correct and complete to the best of my knowledge and belief.

3521

SHEET 3 OF 5

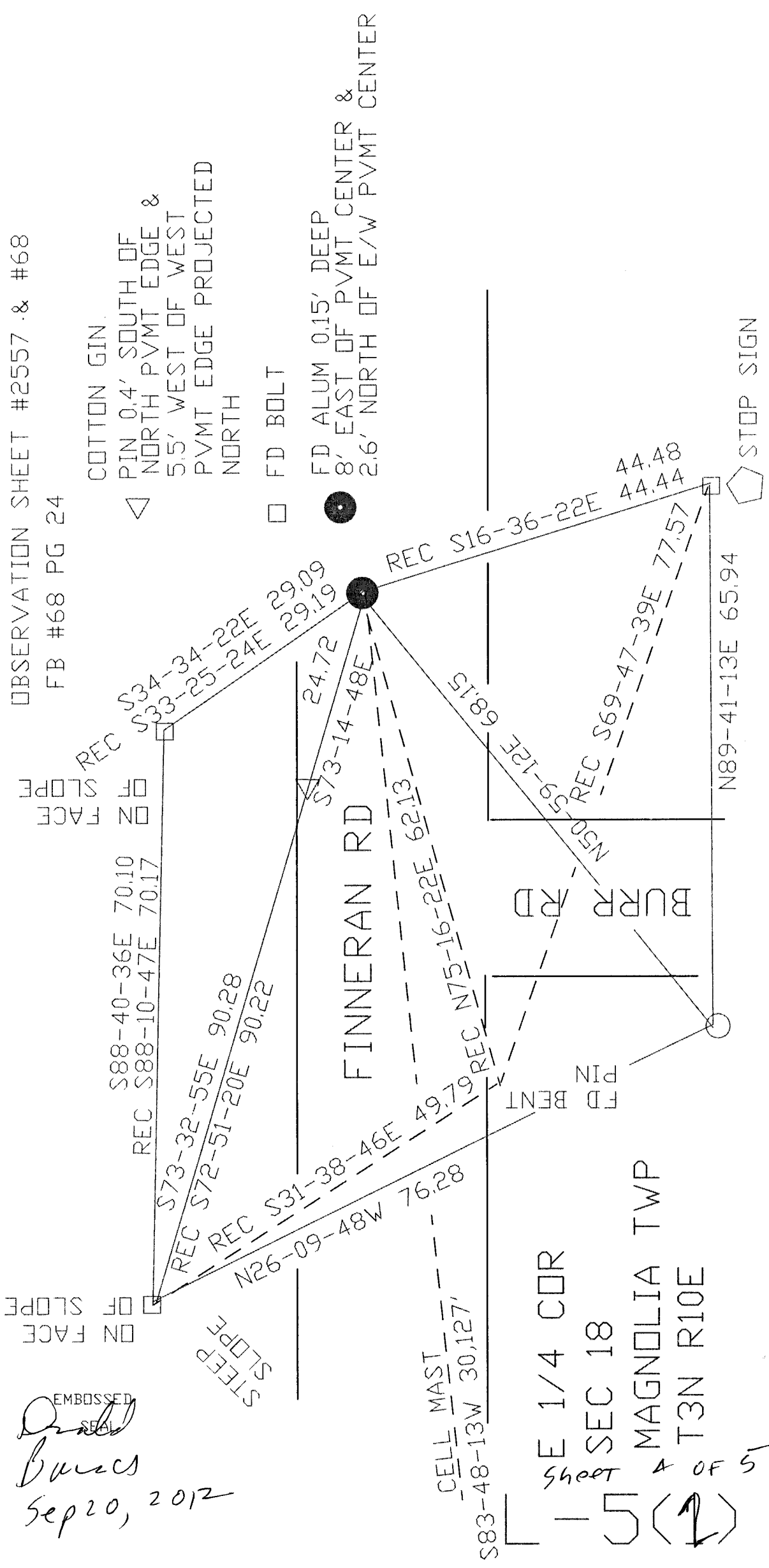
CORNER CODE L-5(2)

*Donald Barnes*  
Sep 20, 2012

A.E. 7.08 REQUIREMENT

EMBOSSED  
 Seal  
*Daniel*  
*Burris*  
 Sep 20, 2012

OBSERVATION SHEET #2557 & #68  
 FB #68 PG 24

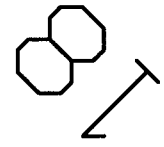


E 1/4 COR  
 SEC 18  
 MAGNOLIA TWP  
 T3N R10E  
 Sheet 4 of 5  
 5 (1)

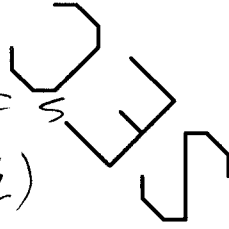
*Druid Barnes  
Sep 20, 2012*

1833 HARRISON 5280.00  
1855 CHURCH 1-55 5301.12  
1870 RUGER 2-28 VAR7-03 5304.42  
1985 BARNES 6-343 NI-08-48E 5314.34  
NO-35-20E 2657.21  
1985 BARNES NI-08-48E 2657.17  
1870 RUGER 2652.21  
1855 CHURCH 2650.56  
1833 HARRISON 2640.00

1996 COMBS CSM 19-43 5293.70  
S89-48-38E 5293.83



*LS(2)  
sheet 5 of 5*



S89-52-41E 1349.75  
1349.99 S89-19-26E 1985 BARNES 1349.99  
1346.82 RUGER 1870 1346.82  
1349.04 1855 CHURCH 1-56

0.02 SOUTH  
DF E/W LINE

1320.00 1855 CHURCH 1-56 1320.00  
1855 CHURCH 1-56 VAR 7-15'

0.01 NORTH  
DF E/W LINE

S89-52-50E 1350.02  
S89-19-26E 1349.99  
RUGER 1870 1346.82

1870 RUGER 2693.64  
1985 BARNES S89-19-26E 2699.98  
S89-52-46E 2699.77

1870 RUGER 2643.96  
1870 RUGER 2644.12  
1870 RUGER 2644.12  
1870 RUGER 2685.88  
S89-52-44E 2707.31  
1870 RUGER 2643.96  
S89-52-45E 5407.08  
S89-19-26E 5407.09  
1870 RUGER 5379.52  
1848 VAUGH RD BK1 PG 6A 5389.56

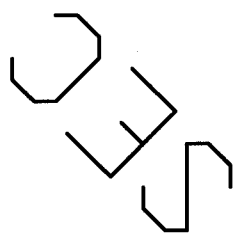
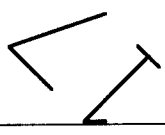
SEC CDR

1978 BARNES 6-362 2711.14  
1870 RUGER 2706.66  
1833 HARRISON 2656.50

1355.57 BARNES 1978 1355.57

1349.12 1870 RUGER 1349.12

1833 HARRISON 2659.80  
1345.90 1978 BARNES 1345.90  
1346.25 S89-46-50E 19?? SHIMEAL  
1329.90 CHURCH 1855 1329.90  
1342.94 1870 RUGER 2-28 VAR 6-44 1342.94



0.52 SOUTH DF  
E/W LINE

S89-51-23E 1354.44  
1354.51 S89-18-21E 1985 BARNES S89-19-14E 1352.60  
1342.94 RUGER 1870 1342.94

1870 RUGER 2685.88  
S89-52-44E 2707.31