

per weight-110# (minimum) k nonfading ink required

# U.S. PUBLIC LAND SURVEY MONUMENT RECORD

For Public Land Survey Corners In:  
**T. 3 N. R. 13 E. 4th P.M.**

WI ADMINISTRATIVE CODE A-E 7.08 REQUIREMENT  
 REV 10/23/2004 USMONREC.DWG

**CORNER CODE INDEX**

A	2	3	4	5	6	7	8	9	10	11	12	13	14	15	16	17	18	19	20	21	22	23	24	25	A
B		6			5				4				3				2				1				B
C																									C
D																									D
E																									E
F																									F
G																									G
H																									H
J																									J
K																									K
L																									L
M																									M
N																									N
O																									O
P																									P
Q																									Q
R																									R
S																									S
T																									T
U																									U
V																									V
W																									W
X																									X
Y																									Y
Z																									Z

HARMONY TWP  
**ROCK COUNTY WI**

IF AVAILABLE  
 ROCK COUNTY COORDINATES PREFERRED

North \_\_\_\_\_ Elev. \_\_\_\_\_

East \_\_\_\_\_

Hor. Datum \_\_\_\_\_ Vert. Datum \_\_\_\_\_

LATITUDE \_\_\_\_\_ ELLIPS. HT. \_\_\_\_\_

LONGITUDE \_\_\_\_\_

NAD83(91) \_\_\_\_\_ NETWORK ADJ. YR 2010

GPS (X) \_\_\_\_\_ TRAVERSE (X) X

BASED ON THE FOLLOWING CONTROL:  
 \_\_\_\_\_

1 2 3 4 5 6 7 8 9 10 11 12 13 14 15 16 17 18 19 20 21 22 23 24 25  
 PLACE MONUMENT SYMBOL **◆** AT PROPER LOCATION ON ABOVE INDEX

**◆ CORNER MONUMENT      ○ WITNESS MONUMENT**

BEARINGS ARE BASED ON: \_\_\_\_\_ ROCK COUNTY PROJECTION

FIELD BOOK \_\_\_\_\_ PAGE # \_\_\_\_\_  
 OR OBSERVATION SHEET \_\_\_\_\_

SHEET 1 OF 3

SHOW A PLAN VIEW DRAWING DEPICTING THE CORNER MONUMENT AND SURROUNDING PHYSICAL FEATURES, INCLUDING THE EXCAVATION AREA AND DEPTH.

PLANNING & ZONING COMMITTEE ADOPTED THIS FORM ON 12/2/1982

CORNER CODE C-13(2)

HA517 E1/4CORSEC4

(B) Describe any record evidence, monument evidence, occupational evidence, testimonial evidence or any other material evidence you considered, and whether the monument was found or placed.

- 1870 RUGER REMON. SET CUT LIMESTONES.  
NORTH ON WEST LINE OF SW QUARTER SEC 3 ON A VAR 7-03  
OFF SET 12.87' AT  
2649.90 INTERSECTED QUARTER LINE AT QUARTER COR  
FD STAKE ON COR SURROUNDED BY FOUR HH  
STONES COR 6-46  
NORTH ON WEST LINE OF NW QUARTER SEC 3 ON A VAR 7-00  
AT  
3030.72 INTERSECTED NORTH BOUNDED LINE 28.38'  
EAST OF COR. COR VAR 7-38
- 1870 RUGER VOL 2 PG 44 STONE MON SET BY SELF. VAR 5-20  
2660.62 TO CENTER OF SEC 4
- 1886 RUGER VOL 2 PG 278 STATES NOTHING ABOUT MON. USED  
TO SUBDIVIDE SEC 3. VAR 5-36 2607.99 TO SET STAKE  
SURROUNDED BY 4 HH STONES @ CENTER OF SEC 3.
- 1966 BATTERMAN 4-294 FD PIPE OVER CUT STONE. MON. SET  
PIPE WESTERLY 33.00.
- 1967 BATTERMAN VOL 4 PG 349 FD CUT STONE. SET MON BOX  
OVER 1" PIPE OVER STONE AT COR. REFERENCED SAME.
- 1977 COMBS CSM VOL 6 PG 259 RESET THE NW COR OF SEC 2  
FROM RUGER'S RESURVEY NOTES. SET PIPE. 59.40 TO SW  
COR SEC 35.
- 1978 BARNES VOL 5 PG 518 COORDINATES PROVIDED BY CITY  
OF JANESVILLE. MARK HURD MAPPING COMPANY MADE THE  
MAP. 278,289.29'; 2,280,694.20'
- 1983 COMBS CSM VOL 11 PG 322 FD PIPE IN MON BOX
- 1984 BARNES C-13 FD 1" PIPE IN MON BOX. FD SW & NW  
REFERENCE PIPES. SET 1" PIPE 44.86 TO THE EAST & RESET  
PIPE TO THE WEST. ELEV 877.8' & NAD27 275,252.47;  
2,280,771.83. COR IS 4' EAST OF WEST PVMT EDGE. FB#1  
PG 53.
- 1987 SCHROEDER CSM VOL 13 PG 33 FD PIPE IN MON. BOX.
- 1994 STRAND C-13(1) 275,260.31; 2,249,239.04 NAD83(1991)  
COORDINATES WERE PROVIDED BY STRAND ASSOCIATES  
FOR STH 26 PROJECT. CONVENTIONAL TRAVERSE WAS  
USED TO CONNECT SECTION CORNERS TO DOT GPS  
STATIONS. GPS STATIONS WERE ESTABLISHED PRIOR TO  
ROCK COUNTY'S GPS NETWORK. STRAND & ASSOCIATES  
USED A SCALE FACTOR OF 0.9999950000 FOR REDUCING  
GROUND TO GRID DISTANCE. I USED STRANS' STATE PLANE  
COORDINATES TO COMPUTE THE ABOVE LATITUDE,  
LONGITUDE, COUNTY COORDINATES, SCALE FACTOR, AND  
ANGLE BETWEEN THE TRUE NORTH AND COUNTY MAPPING  
PROJECTION NORTH. LAT 42-45-01.44492 LON 88-57-  
17.22804 N/S 293,750.86 E/W 511,544.86 SCALE  
0.9999971368 ANGLE + 0-04-47
- 1995 SCHROEDER CSM VOL 18 PG 329
- 1997 WIDOT 6-451 1" PIPE IN MON BOX. 275,260.31';  
2,249,239.04

CORNER WILL BE DESTROYED OR DISTURBED BY THE STH 26  
PROJECT. SW & WEST REFERENCE PIPES WERE GONE. FD NW  
REFERENCE PIPE LEANING. STRAIGHTENED SAME SO I COULD GET  
A BETTER MEASUREMENT. TOP OF MON BOX WAS ABOUT 1' BELOW  
PVMT SURFACE & 6.1' EAST OF WEST PVMT EDGE. DID NOT SEE DOT  
R/W SIGNS OR PINS. AREA EAST OF PVMT WAS GREATLY DISTURBED  
BY TREE CLEARING.

Seal

Emboss

*Ronald Barnes*

*May 15 2012*

SHEET 7 OF 3

CORNER CODE C-13(2)

HA517 E1/4CORSEC4

DOT PLANS SHOW MAJOR RELOCATION OF RD. CUT LS OF RECORD  
MAY SURVIVE.

C) Was the corner restored through acceptance of (1) an obliterated evidence location, or, (2) a found perpetuated location?

ACCEPTED FD PIPE IN MON. BOX.

D) Describe any material discrepancy between the location of the corner as restored or reestablished and the location of that corner as previously restored or reestablished by distance and direction. Show the discrepancy on the plan view drawing under (a), above. Show the distances between the corner as previously restored or reestablished and (1) the corner as restored or reestablished, and (2) to at least 4 of the witness monuments shown on the drawing in (a), above.

(E) Was the corner reestablished through lost corner proportionate methods? If so, show the method, including the directions and distances to other public land survey corners used as evidence or used for proportioning the corner location.

I, **Donald Barnes**, hereby certify that the corner location as identified by the corner code index was determined by me under my direction and control and that this U.S. Public Land Survey Monument Record is correct and complete to the best of my knowledge and belief.

Seal

*Donald Barnes*  
Emboss

SHEET 2 OF 3

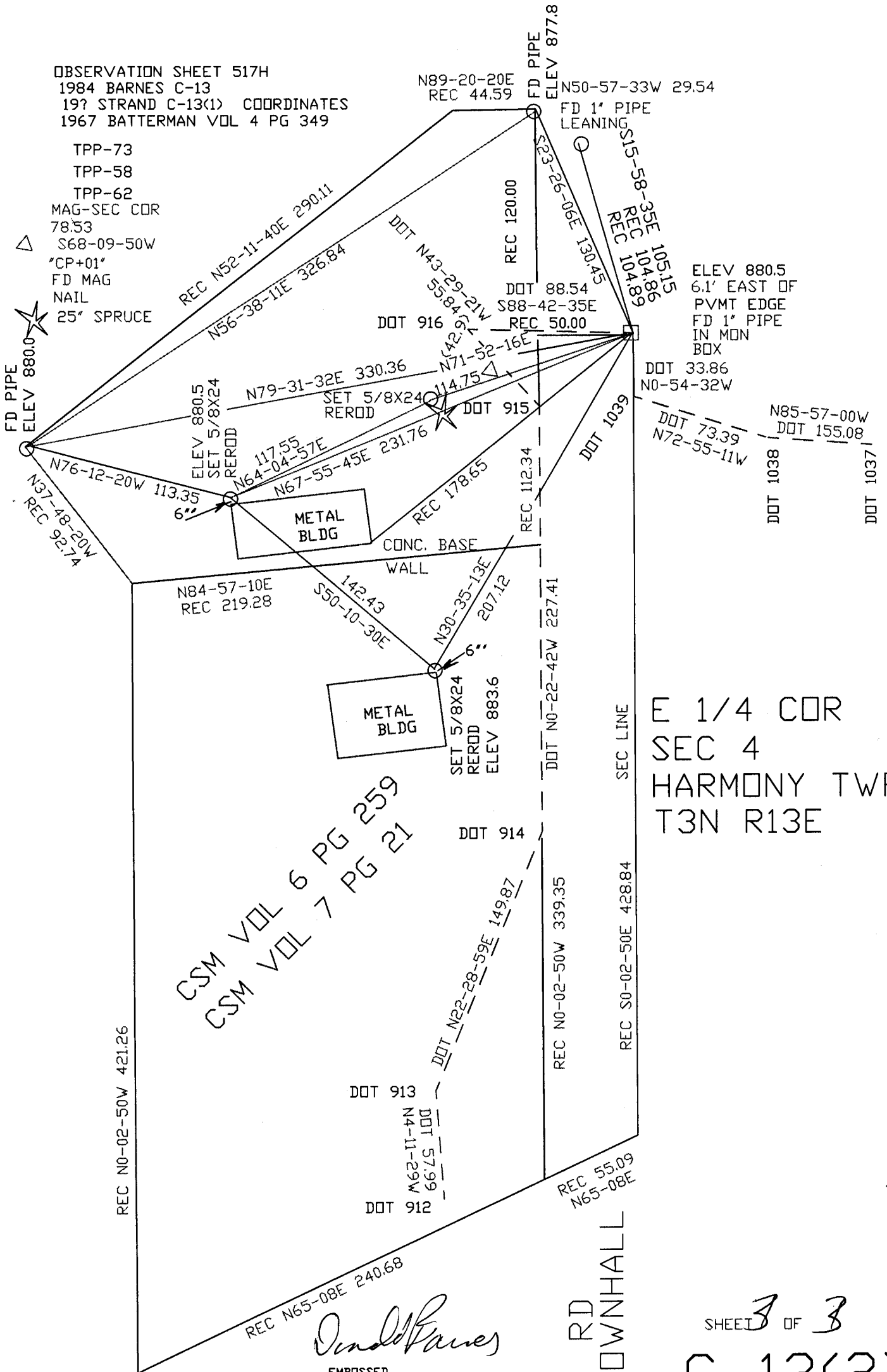
CORNER CODE **C-13(2)**

*May 15 2012*

A.E. 7.08 REQUIREMENT

OBSERVATION SHEET 517H  
 1984 BARNES C-13  
 197 STRAND C-13(1) COORDINATES  
 1967 BATTERMAN VOL 4 PG 349

TPP-73  
 TPP-58  
 TPP-62  
 MAG-SEC COR  
 78.53  
 S68-09-50W  
 "CP+01"  
 FD MAG  
 NAIL  
 25" SPRUCE



CSM VOL 6 PG 259  
 CSM VOL 7 PG 21

E 1/4 COR  
 SEC 4  
 HARMONY TWP  
 T3N R13E

*Dennis Barnes*  
 EMBOSSED SEAL  
 506, 9, 2012

RD  
 TOWNHALL

SHEET 3 OF 3  
 C-13(2)