

PUBLIC LAND SURVEY MONUMENT RECORD

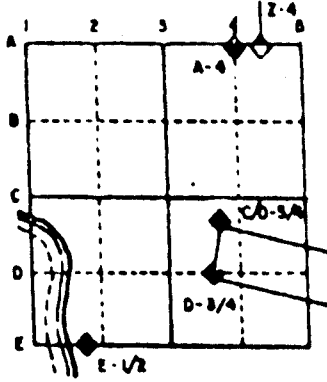
For Public Land Survey Corners in the
T. 3 N., R. 3 E.

CORNER CODE INDEX

	1	2	3	4	5	6	7	8	9	10	11	12	13	14	15	16	17	18	19	20	21	22	23	24	25
A																									
B																									
C																									
D																									
E																									
F																									
G																									
H																									
I																									
J																									
K																									
L																									
M																									
N																									
O																									
P																									
Q																									
R																									
S																									
T																									
U																									
V																									
W																									
X																									
Y																									
Z																									

PLACE MONUMENT SYMBOL (◆) AT PROPER LOCATION ON ABOVE INDEX

EXAMPLE



HARMONY TWP
ROCK COUNTY WI

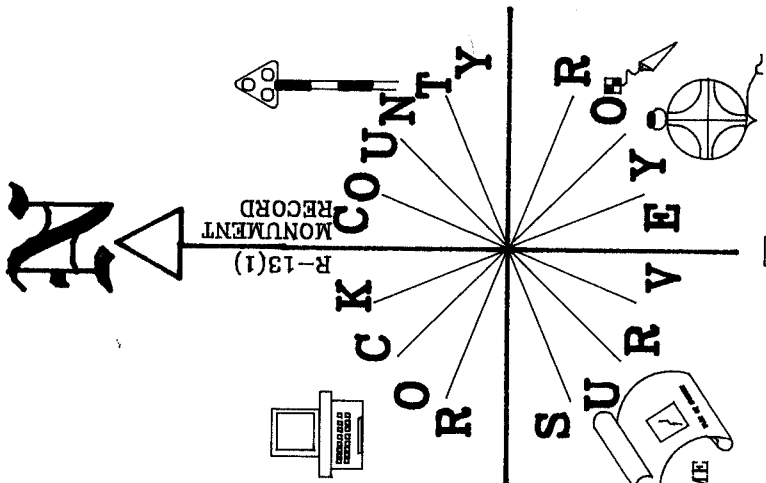
IF AVAILABLE
STATE PLANE COORDINATES

North (Y) _____ Elevation (Z) 875.4
East (X) _____ Zone _____
Hor. Datum County Vert. Datum NAD 29
NAD 83(91)

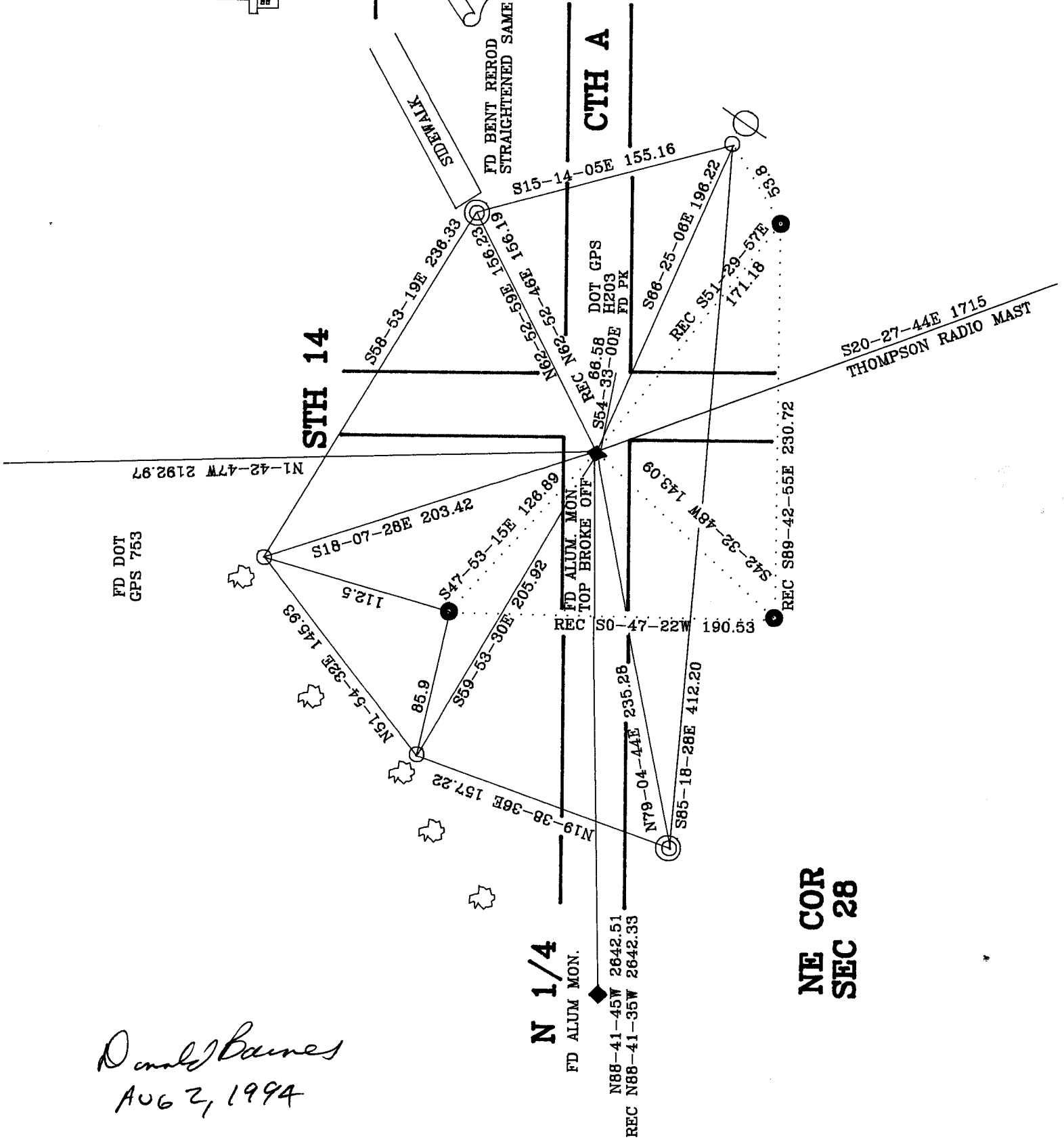
◆ CORNER MONUMENT

○ WITNESS MONUMENT

BEARINGS ARE BASED ON:



- 3/8X24 REROD 15" DEEP RECORD - DID NOT ATTEMPT TO RECOVER
- 3/4X24" REROD / PLASTIC CAP
- ☼ 2" DIA TREE



Donald Barnes
 AUG 2, 1994

N 1/4

FD ALUM MON.

N85-41-45W 2642.51
 REC N88-41-35W 2642.33

**NE COR
 SEC 28**

(B) Describe any record evidence, monument evidence, occupational evidence, testimonial evidence or any other material evidence you considered, and whether the monument was found or placed.

- 1868 LOCKE VOL 1 PG 318 FOUND OLD STAKE - SET LARGE CEDAR STAKE WITH LIMESTONE ON N,S,E,&W. 2646.6' TO N 1/4 COR SEC 27.
- 1870 RUGER - REMONUMENTATION NOTES- SOUTH ON EAST LINE OF SE 1/4 OF SECTION 21 ON A VAR 7-30 AT 2620.86 INTERSECTS SOUTH BOUNDARY LINE AT CORNER. FOUND STAKE SET BY LOCKE SURROUNDED BY 4 LIMESTONES. PLACED LARGE CUT LIMESTONE.
- 1901 KERCH VOL 3 PG 9 FOUND MONUMENT. 2648.0 TO N 1/4 CORNER & 2644.8 TO W 1/4 CORNERS OF SECTION 27.
- 1936 SUNNY VOL 3 PG 298 FOUND 6X6 STONE MONUMENT 18" LOW. SET 1 1/2" IRON PIPE MONUMENT CAPPED ON TOP. SET REFERENCE TIES.
- 1951 SUNNY VOL 3 PG 475 FOUND 2" PIPE. ANGLE FROM S 1/4 TO E 1/4 CORNERS OF SECTION 21 AT THE SE CORNER OF SECTION 21 IS 87-50.(TWP PROJ 87-38-16)
- 1963 BATTERMAN JR. VOL 4 PG 153 MONUMENT BOX OVER 1 1/2" CAPPED PIPE SET BY SUNNY OVER STONE MONUMENT. REFERENCED SAME.
- 1973 LEE VOL 5 PG 1 FOUND PIPE. CALLS FOR 2648.26 (TWP PROJ 2648.19') TO N 1/4 CORNER & 2645.05' (TWP PROJ 2645.17) TO W 1/4 CORNER OF SECTION 27. ANGLE 88-04-01 (TWP PROJ 88-03-32) FROM N 1/4 CORNER TO W 1/4 CORNER AT NW CORNER OF SECTION 27.
- 1977 HURD NAD 27 256,789.330; 2,281,257.785. TWP PROJ. 256,789.23; 2,281,256.40.
- 1977 BARNES VOL 5 PG 338 FOUND MONUMENT BOX 0.3 DEEP. REMOVED BOX & FOUND GAS PIPE 2' DEEP. SET ALUM MONUMENT ON TOP.
- 1980 BARNES VOL 6 PG 16 FOUND ALUM. MON. CALLS FOR 2642.46 TO N 1/4 COR SECTION 28.
- 1983 BARNES VOL 6 PG 302 FOUND ALUM. MON. CALLS FOR 2645.19 TO E 1/4 CORNER OF SECTION 28.
- 1983 BARNES R 13 FOUND ALUM. MON. & REFERENCED SAME. CALLS FOR ELEVATION OF 875.4 & COORDINATES AS IN 1977.
- 1986 BARNES R 13(1) FOUND ALUM. MON. & REFERENCED SAME.

FOUND ALUM. MON. WITH TOP BROKE OFF. CORNER WILL BE DISTURBED BY ROAD CONSTRUCTION. MEASURED 2642.51 TO THE N 1/4 CORNER OF SECTION 28.

C) Was the corner restored through acceptance of (1) an obliterated evidence location, or, (2) a found perpetuated location?
ACCEPTED FOUND PERPETUATED LOCATION.

D) Describe any material discrepancy between the location of the corner as restored or reestablished and the location of that corner as previously restored or reestablished by distance and direction. Show the discrepancy on the plan view drawing under (a), above. Show the distances between the corner as previously restored or reestablished and (1) the corner as restored or reestablished, and (2) to at least 4 of the witness monuments shown on the drawing in (a), above.

I, Donald Barnes, hereby certify that the corner points as identified by the corner code index were, in a field survey on, July 28, 1994, established, re-established, monumented, re-monumented, recovered or restored as expressed below and in conformance with the regulations and rules as required in the current manual of survey instructions of the United States Department of Interior, Bureau of Land Management.

seal

Donald Barnes
AUG 2 1994

AFFIX YOUR LAND SURVEYOR SEAL

COUNTY SURVEYOR FILING DATA

Date of computer entry _____

Date microfilmed _____

Number of included sheets _____
CORNER CODE