

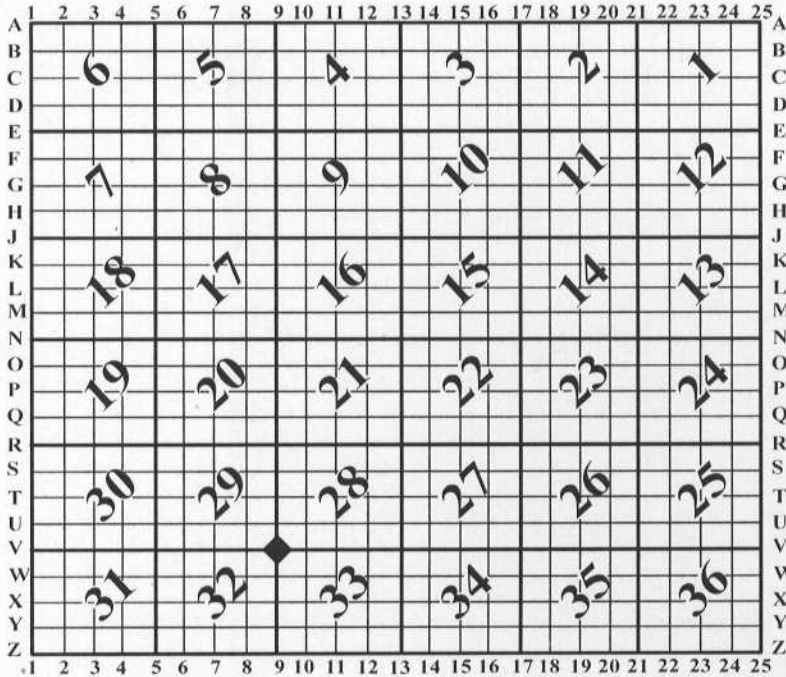
# U.S. PUBLIC LAND SURVEY MONUMENT RECORD

For Public Land Survey Corners In: WI ADMINISTRATIVE CODE A-E 7.08 REQUIREMENT

T. 3 N. - R. 10 E. of the 4th P.M.

### CORNER CODE INDEX

(PLACE "◆" SYMBOL AT PROPER PLSS CORNER LOCATION)



MAGNOLIA TWP  
ROCK COUNTY WI

### COORDINATES

(GNSS DERIVED VIA WISCORS)

NORTHING: 270623.64 ELEV: N/A

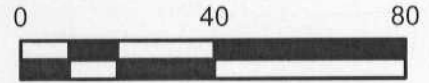
EASTING: 411280.55

Hor. Datum: WCCS-ROCK, (NA2011)

Vertical Datum: NAVD 88, (If applicable)

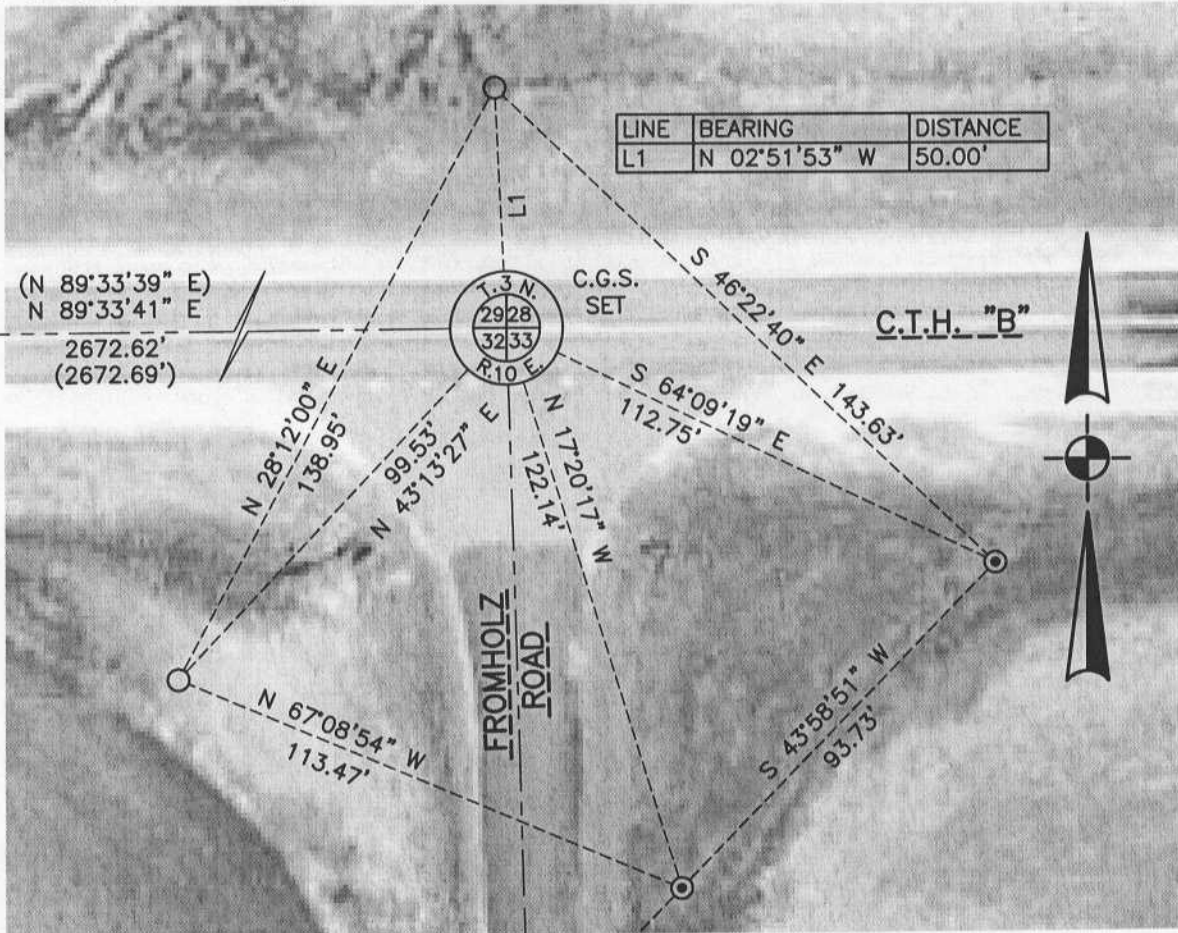
(a) **LEGEND**

- - CONCRETE WDOT MONUMENT WITH DISK FOUND
- ⊙ - IRON REBAR FOUND, (Combs Survey, M14902 & M14903)
- ⊗ - IRON PIPE FOUND
- (#) - RECORD DATA, (Combs survey, M17430)



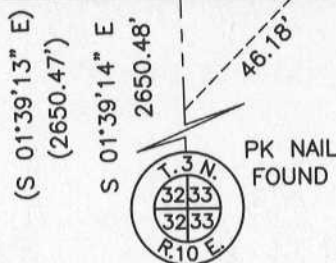
C.G.S.-COTTON  
GIN  
SPINDLE

ALUM.  
"SURVEY  
MARKER"  
NAIL  
FOUND



Field book: Magnolia 2013

Page: 48



Corner code: V-9

Page 1 of 2

**B) Describe any record evidence, monument evidence, occupational evidence, testimonial evidence or any other material evidence you considered, and whether the monument was found or placed.**

I found two of the four witnesses on the V-9 tie-sheet prepared by Barnes, (1985); only one was found to be undisturbed, (WDOT concrete mon. w/brass disk). Two other record monuments, (3/4" rebar), were found from a survey completed by Ron Combs, (M14902 & M14903 in Co. Surveyors office), to assist with restoring the PLSS corner. The East line of Section 32-3-10 was established from the Combs monuments per the referenced map. The East 1/4 corner, (X-9, Houle), was found and the East line of the section was extended to a point 50.00 feet from the WDOT monument. A recent Combs survey, (M17430), shows this corner and ties to nearby PLSS corners match within acceptable tolerances to my location. A cotton gin spindle was set at the PLSS corner location. An additional Concrete WDOT monument was found that wasn't previously shown and used as the fourth witness.

**C) Was the corner restored through acceptance of (1) an obliterated evidence location, or, (2) a found perpetuated location?**

This PLLS corner was obliterated and restored from record witnesses.

**D) Describe any material discrepancy between the location of the corner as restored or reestablished and the location of that corner as previously restored or reestablished by distance and direction. Show the discrepancy on the plan view drawing under (a), above. Show the distances between the corner as previously restored or reestablished and (1) the corner as restored or reestablished, and (2) to at least 4 of the witness monuments shown on the drawing in (a), above.**

I did not find a discrepancy between the corner restored and a previously documented corner location. *Discrepancy* being defined as *disagreeing* with a corner location, *not* as noting dimensional differences between current/former tie sheets due to measuring methods. The current and *most recent* tie-sheet dimensions filed for the corner are noted. Depending on the chosen monuments to restore this corner location from, differing solutions are arrived at. Any chosen method appears to be within 0.1' +/- of another. My preference was to hold 50.00 feet from the WDOT monument, (Barnes tie-sheet), and use that in conjunction with the Combs monuments.

**(E) Was the corner reestablished through lost corner proportionate methods? If so, show the method, including the directions and distances to other public land survey corners used as evidence or used for proportioning the corner location.**

N/A

I, **Jason R. Houle**, hereby certify that the corner location as identified by the corner code index was determined by me under my direction and control and that this U.S. Public Land Survey Monument Record is correct and complete to the best of my knowledge and belief.

CORNER CODE: V-9  
(A.E. 7.08 REQUIREMENT)

