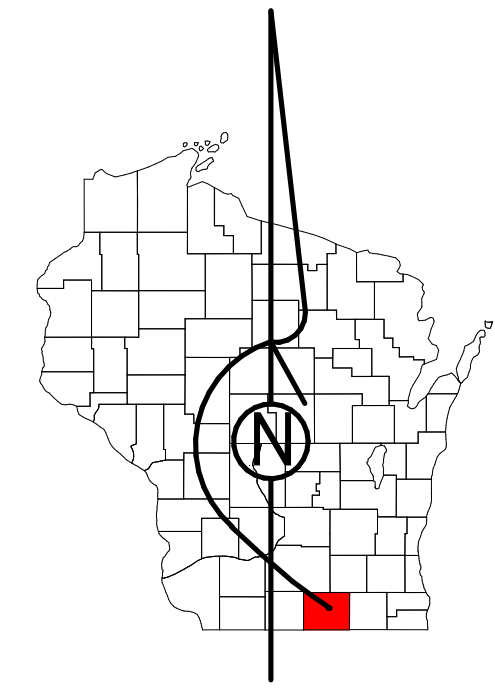


# Property Division Map

City  
of  
Edgerton

T. 4 N. - R. 12 E.  
Section 09 NW



STATE OF WISCONSIN  
COUNTY OF ROCK

PREPARED BY

REAL PROPERTY DESCRIPTION  
DEPARTMENT  
USING  
ROCK COUNTY  
GEOGRAPHIC INFORMATION SYSTEM

DUPLICATION OF THIS MAP PROHIBITED  
WITHOUT THE WRITTEN CONSENT OF THE  
REAL PROPERTY DESCRIPTION DEPARTMENT.

THIS MAP WAS PREPARED PURSUANT  
TO SECTION 70.09 WIS. STATS.  
USING PUBLIC RECORDS. IT IS NOT INTENDED  
TO BE A SUBSTITUTE FOR AN  
ACTUAL FIELD SURVEY  
AND IS ADVISORY ONLY.

DISTANCES SHOWN ON THIS  
MAP WERE PRODUCED BY  
THE GIS SYSTEM AND ARE  
FOR REFERENCE ONLY.  
SEE DOCUMENT OF RECORD  
FOR ACTUAL DISTANCE.

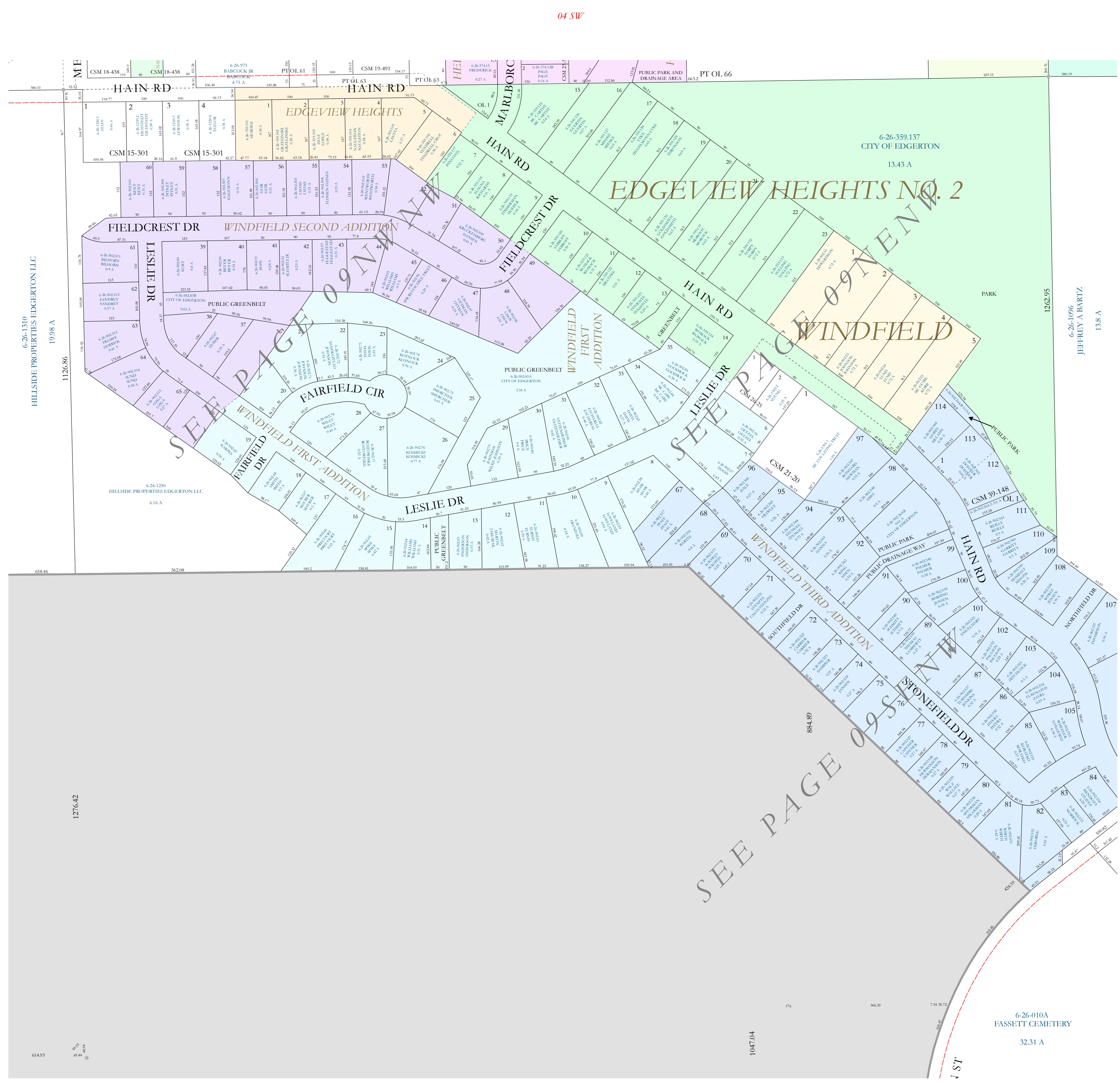
0 25 50 100 150 200  
Feet

- |  |                |  |             |
|--|----------------|--|-------------|
|  | Gap            |  | dam         |
|  | Overlap        |  | easement    |
|  | Town of Fulton |  | hydro       |
|  | CSM            |  | lots        |
|  | CSMHYDRO       |  | parcels     |
|  | CSMLOT         |  | parcelhydro |
|  | CSMLOTHYDRO    |  | roadw       |
|  | MFL            |  |             |

See Pages

January 1, 2022

09 NW



04 SW

09 SW

08 NE

09 NE

SEE PAGE 09 SW

SEE PAGE 09 NW

SEE PAGE 09 NE