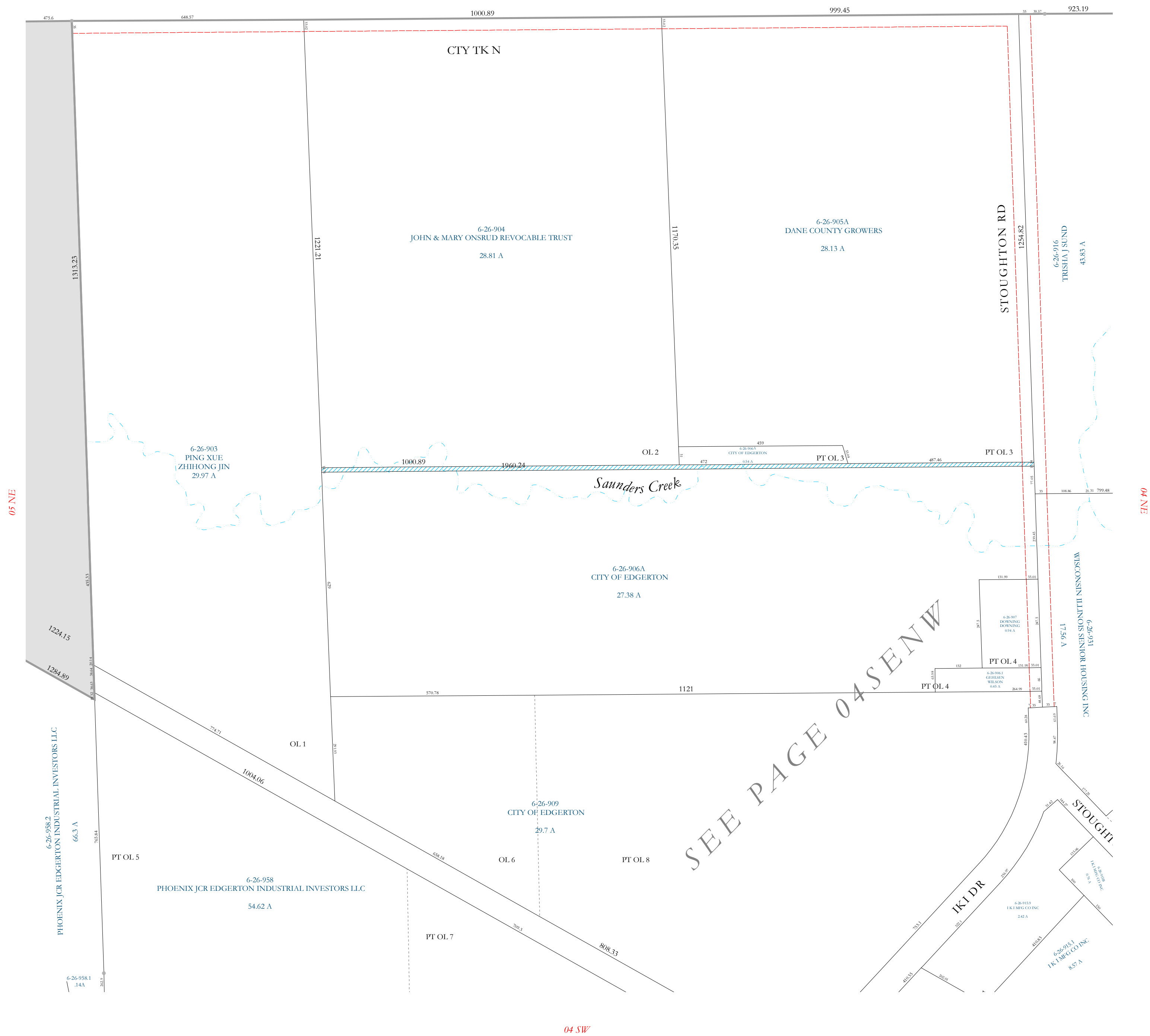


Dane County

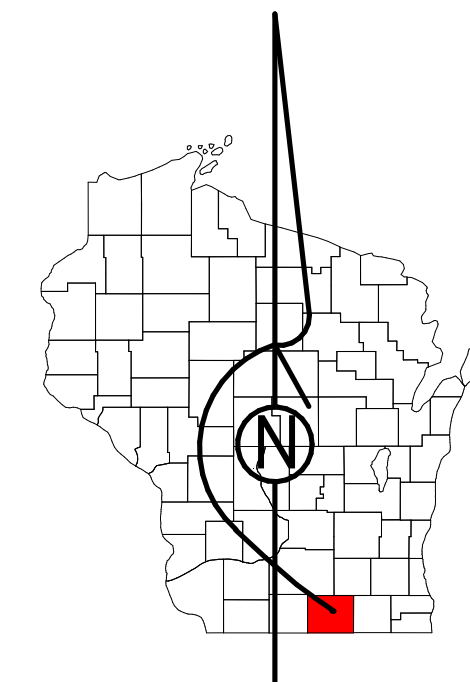


SEE PAGE 04 SENW

Property Division Map

City of Edgerton

T. 4 N. - R. 12 E.
Section 04 NW



STATE OF WISCONSIN
COUNTY OF ROCK

PREPARED BY

REAL PROPERTY DESCRIPTION DEPARTMENT

USING

ROCK COUNTY GEOGRAPHIC INFORMATION SYSTEM

DUPLICATION OF THIS MAP PROHIBITED WITHOUT THE WRITTEN CONSENT OF THE REAL PROPERTY DESCRIPTION DEPARTMENT.

THIS MAP WAS PREPARED PURSUANT TO SECTION 70.09 WIS. STATS. USING PUBLIC RECORDS. IT IS NOT INTENDED TO BE A SUBSTITUTE FOR AN ACTUAL FIELD SURVEY AND IS ADVISORY ONLY.

DISTANCES SHOWN ON THIS MAP WERE PRODUCED BY THE GIS SYSTEM AND ARE FOR REFERENCE ONLY. SEE DOCUMENT OF RECORD FOR ACTUAL DISTANCE.



- Gap
- Overlap
- Town of Fulton
- CSM
- CSMHYDRO
- CSMLOT
- CSMLOTHYDRO
- MFL
- dam
- easement
- hydro
- lots
- parcels
- parcelshydro
- roadw

See Pages

January 1, 2022

04 NW