

RESOLUTION

ROCK COUNTY BOARD OF SUPERVISORS

Public Works Committee
INITIATED BY



Lori Williams, Parks Director
DRAFTED BY

Public Works Committee
SUBMITTED BY

August 3, 2010
DATE DRAFTED

AGREEMENTS BY AND BETWEEN THE WISCONSIN DEPARTMENT OF TRANSPORTATION AND ROCK COUNTY FOR THE CONSTRUCTION AND MAINTENANCE OF BICYCLE/PEDESTRIAN PATH WITHIN THE RIGHTS-OF-WAY OF STATE HIGHWAY 26 IN ROCK COUNTY

1 **WHEREAS** the State and County have agreed to the development of a Bicycle/Pedestrian path that
 2 initially contains three sections; and,
 3
 4 **WHEREAS**, Section 1 Rock County path runs along the west side of State Highway 26 starting at
 5 Storrs Lake Road and extending northerly approximately 4.9 miles to the Rock County line where it
 6 connects to the existing Glacial River Trail in Jefferson County; and,
 7
 8 **WHEREAS**, Section 2 Rock County path runs along the east side of State Highway 26 starting at
 9 Town Line Road extending northerly approximately 1.5 miles to Milton City Limits south of
 10 Highway 59; and,
 11
 12 **WHEREAS**, Section 3 runs along the east side of State Highway 26 starting at Town Hall Road
 13 and extending northerly 0.5 miles to Town Line Road; and,
 14
 15 **WHEREAS**, the Cities of Janesville and Milton have agreed each to take over the maintenance of
 16 sections 2 and 3 as their respective municipalities grow into those areas; and,
 17
 18 **WHEREAS**, within said limits the initial construction of the path and appurtenances will be
 19 financed and completed by the State in cooperation with the County; and,
 20
 21 **WHEREAS**, Wisc. Stat. Sec. 66.0301 authorizes municipalities, including the County and the
 22 State, to contract with one another for the receipt or furnishing of services or the joint exercise of
 23 any power or duty required or authorized by law; and,
 24
 25 **WHEREAS**, State Statute 66.0301, (2) specifically authorizes municipalities to enter into
 26 intergovernmental cooperation agreements for any purpose consistent with other statutory
 27 provisions for the respective municipalities.
 28
 29 **NOW, THEREFORE, BE IT RESOLVED**, that the Rock County Board of Supervisors on this
 30 23rd day of September, 2010, hereby approves Intergovernmental Agreements
 31 with the Wisconsin Department of Transportation for the construction and maintenance of the
 32 Bicycle/Pedestrian Path within the Rights-Of-Way of State Highway 26 in Rock County.

10-9B-150

RESPECTFULLY SUBMITTED:

PUBLIC WORKS COMMITTEE

Kurtis L. Yankee
Kurtis L. Yankee, Chair

Betty Jo Bussie
Betty Jo Bussie, Vice Chair

Eva Arnold
Eva Arnold

David Diestler
David Diestler

Brent Fox
Brent Fox

Agreements by and Between the Wisconsin Department of Transportation and Rock County for the Construction and Maintenance of Bicycle/Pedestrian Path Within the Rights-of-Way of State Highway 26 in Rock County

Page 2

FISCAL NOTE:

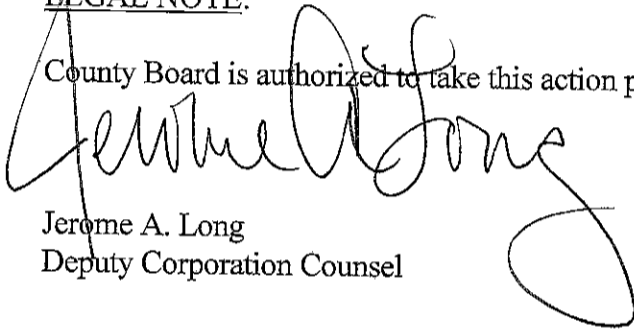
As detailed in the Executive Summary the State would be responsible for the construction cost of the proposed trail. Upon completion, expected by 2013 or 2014, the County would be responsible for maintaining the trail at an initial estimated cost of \$400 per mile. Approximately 6.9 miles of the trail maintenance would be the County's responsibility under the existing proposal.



Jeffrey A. Smith
Finance Director

LEGAL NOTE:

County Board is authorized to take this action pursuant to §59.01, 59.51 and 66.0301, Wis. Stats.



Jerome A. Long
Deputy Corporation Counsel

ADMINISTRATIVE NOTE:

Recommended.



Craig Knutson
County Administrator

- EXECUTIVE SUMMARY -

APPROVING THE AGREEMENTS BY AND BETWEEN THE WISCONSIN DEPARTMENT
OF TRANSPORTATION AND ROCK COUNTY FOR THE CONSTRUCTION AND
MAINTENANCE OF THE BICYCLE/PEDESTRIAN PATH WITHIN THE RIGHTS-OF WAY-
OF STATE HIGHWAY 26 IN ROCK COUNTY

In conjunction with the Highway 26 Bypass Project, the State Department of Transportation (DOT) is planning to construct a paved 40-mile bike/pedestrian pathway in the highway right-of-way from Janesville to north of Watertown. The DOT is requesting cooperation with other jurisdictions and entities for maintenance of the pathway after construction of the path. Various groups who are collaborating on this project include the Cities of Janesville and Milton; Jefferson, Dodge and Rock Counties; and the Wisconsin DOT and DNR.

Rock County has been asked to accept the pathway section from Storrs Lake Road north to County Line Road. This segment is approximately 5 miles long. The State plans to purchase the right-of-way and fund construction at no initial cost to Rock County. If total project costs come in over budgeted amounts, the State will work with Rock County to modify the pathway project to fit within budget parameters.

After construction is complete, Rock County would assume pathway maintenance for a 20-year timeframe. Maintenance expectation of the State is mainly mowing and litter cleanup. The estimated cost is \$400 per mile per year initially, and up to \$700 per year long-term as the pathway ages and anticipated crack filling and other maintenance needs arise.

The State is requesting Rock County enter into four separate agreements: the first being for constructing the highway improvement project and the other three being a maintenance agreement for each pathway section, Section 1 Rock County path from Storrs Lake Road extending north to the Rock County Line. Section 2 Rock County path runs along the east side of State Highway 26 starting at Town Line Road extending northerly approximately 1.5 miles to Milton City Limits south of Highway 59. Section 3 runs along the east side of State Highway 26 starting at Town Hall Road and extending northerly 0.5 miles to Town Line Road. The Cities of Janesville and Milton have each agreed to take over the maintenance of sections 2 and 3 as their respective municipalities grow into those areas. Memorandums of understanding will be drafted with both municipalities after the approval of this resolution.

Support of this project will allow the County a recreational and alternative transportation opportunity that we could not afford on our own. It also allows for connectivity of alternate transportation between communities by providing 40 miles of off-road travel from Janesville to Watertown. It also allows us to cooperate with other jurisdictions and entities in offering a significant asset that will enable us to promote the regional trail as a tourism opportunity and attraction by 2014.

Respectfully submitted,

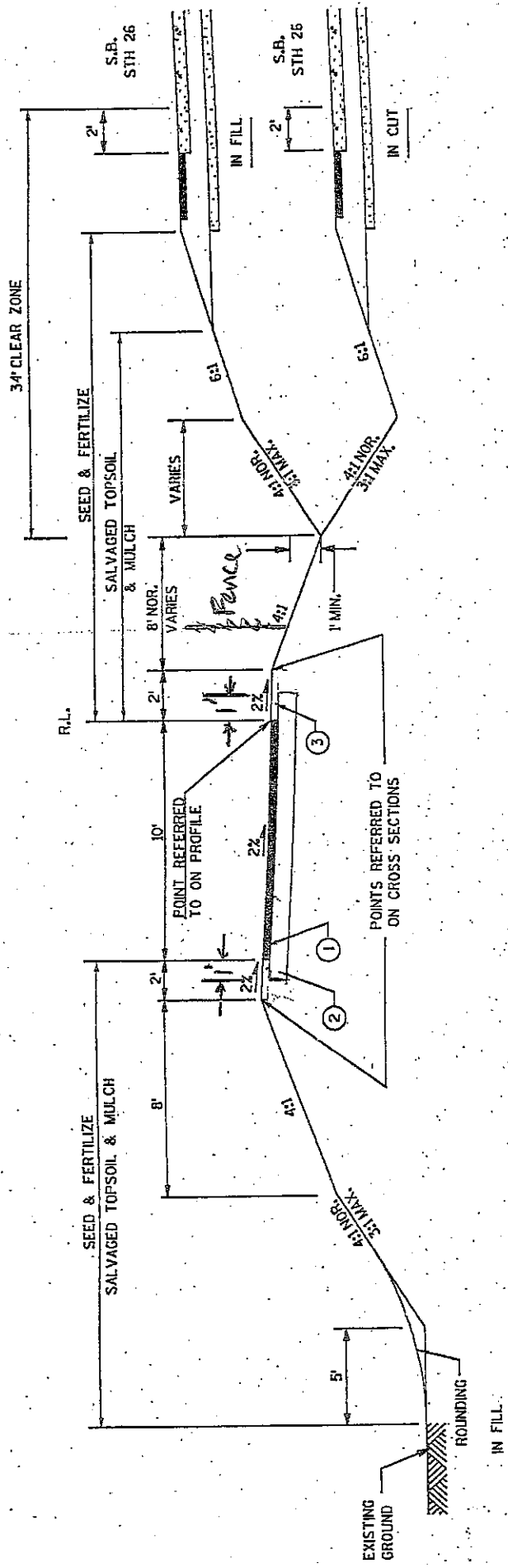


Lori Williams
Parks Director

12.D.3.(5)

LEGEND

- ① 2" HMA PAVEMENT TYPE E-0.3
- ② 6" BASE AGGREGATE DENSE 1 1/4-INCH
- ③ SALVAGED TOPSOIL, MULCH, SEED & FERTILIZER
ROLLED AND COMPACTED



TYPICAL FINISHED SECTION

BICYCLE / PEDESTRIAN PATH