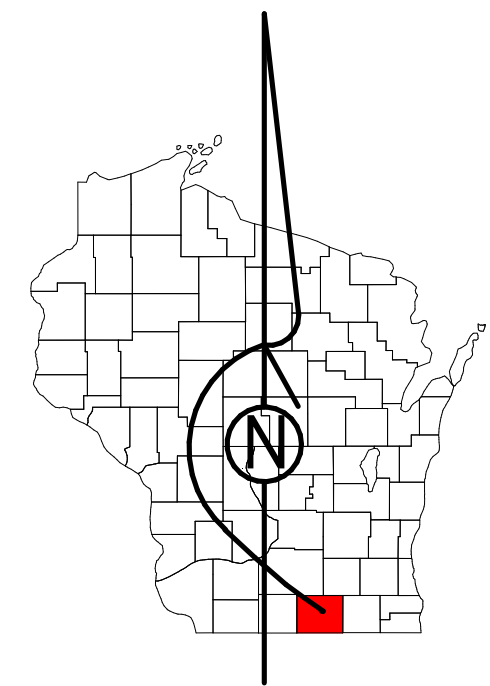


Property Division Map

Town
of
Harmony

T. 3 N. - R. 13 E.

Section 09



STATE OF WISCONSIN
COUNTY OF ROCK

PREPARED BY

**REAL PROPERTY DESCRIPTION
DEPARTMENT**
USING
**ROCK COUNTY
GEOGRAPHIC INFORMATION SYSTEM**

DUPLICATION OF THIS MAP PROHIBITED
WITHOUT THE WRITTEN CONSENT OF THE
REAL PROPERTY DESCRIPTION DEPARTMENT.

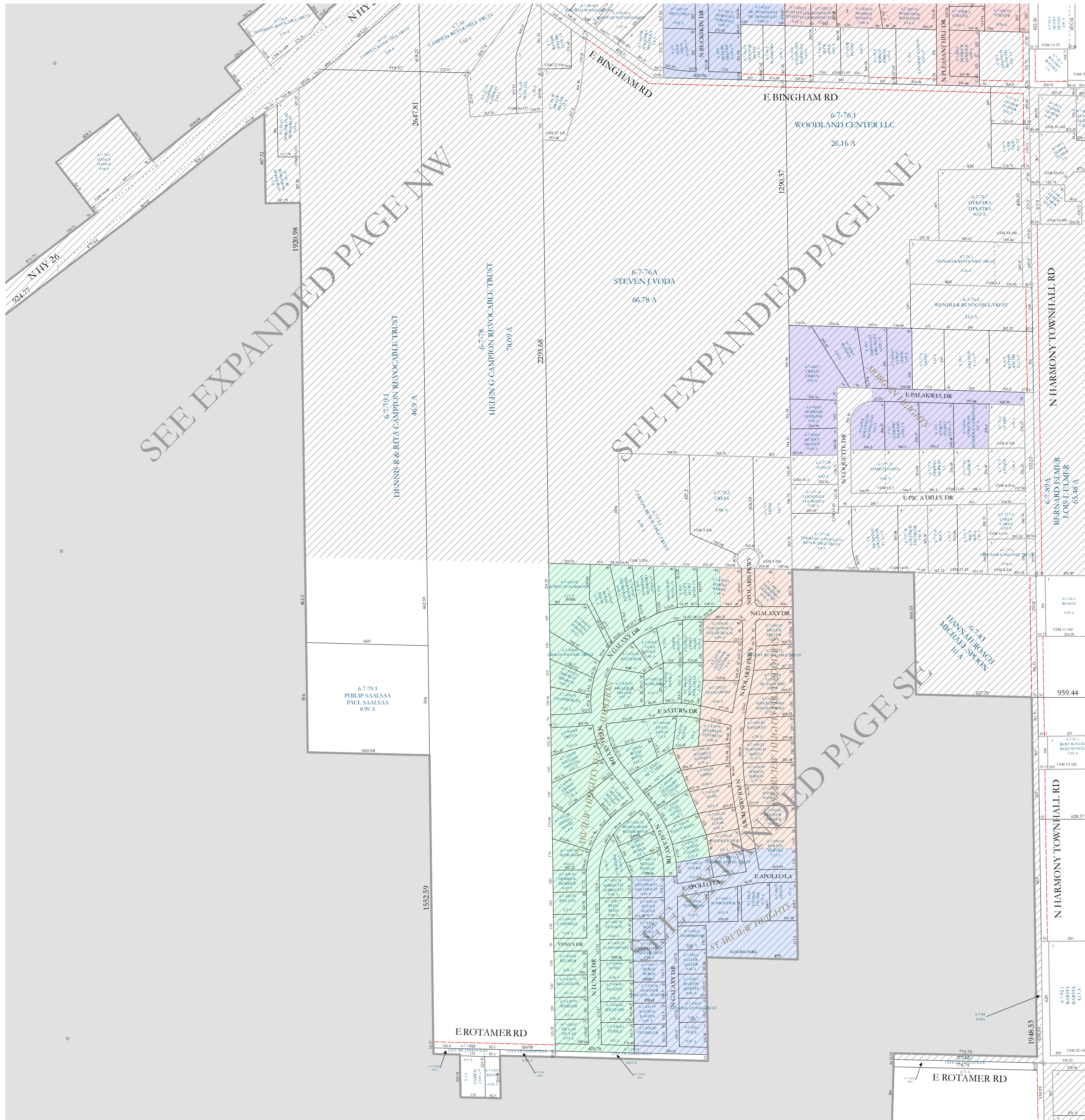
THIS MAP WAS PREPARED PURSUANT
TO SECTION 70.09 WIS. STATS.
USING PUBLIC RECORDS. IT IS NOT INTENDED
TO BE A SUBSTITUTE FOR AN
ACTUAL FIELD SURVEY
AND IS ADVISORY ONLY.

DISTANCES SHOWN ON THIS
MAP WERE PRODUCED BY
THE GIS SYSTEM AND ARE
FOR REFERENCE ONLY.
SEE DOCUMENT OF RECORD
FOR ACTUAL DISTANCE.

0 50 100 200 300 400
Feet

- | | | | |
|--|--------------------|--|--------------|
| | Gap | | MFL |
| | Overlap | | dam |
| | City of Milton | | easement |
| | City of Janesville | | hydro |
| | CSM | | lots |
| | CSMHYDRO | | parcels |
| | CSMLOT | | parcelshydro |
| | CSMLOTHYDRO | | roadrw |

See Pages
January 1, 2022



SEE EXPANDED PAGE NW

SEE EXPANDED PAGE NE

SEE EXPANDED PAGE SE