

Paper weight-110# (minimum)

Black nonfading ink required

U.S. PUBLIC LAND SURVEY MONUMENT RECORD

For Public Land Survey Corners In:

WI ADMINISTRATIVE CODE A-E 7.08 REQUIREMENT

T. 4 N. R. 11 E. 4th P.M.

REV 10/23/2004

USMONREC.DWG

CORNER CODE INDEX

PORTER TWP
ROCK COUNTY WI

A	1	2	3	4	5	6	7	8	9	10	11	12	13	14	15	16	17	18	19	20	21	22	23	24	25	A
B		6				5				4				3				2			1					B
C																										C
D																										D
E																										E
F																										F
G																										G
H																										H
J																										J
K																										K
L																										L
M																										M
N																										N
O																										O
P																										P
Q																										Q
R																										R
S																										S
T																										T
U																										U
V																										V
W																										W
X																										X
Y																										Y
Z																										Z

IF AVAILABLE
ROCK COUNTY COORDINATES PREFERRED

North _____ Elev. _____

East _____

Hor. Datum _____ Vert. Datum _____

LATITUDE _____ ELLIPS. HT. _____

LONGITUDE _____

NAD83(91) _____ NETWORK ADJ. YR _____

GPS (X) _____ TRAVERSE (X) _____

BASED ON THE FOLLOWING CONTROL:

PLACE MONUMENT SYMBOL AT PROPER LOCATION ON ABOVE INDEX

CORNER MONUMENT

WITNESS MONUMENT

BEARINGS ARE BASED ON: _____

FIELD BOOK _____ PAGE # _____

SHEET 1 OF 2

SHOW A PLAN VIEW DRAWING DEPICTING THE CORNER MONUMENT AND SURROUNDING PHYSICAL FEATURES, INCLUDING THE EXCAVATION AREA AND DEPTH.

PLANNING & ZONING COMMITTEE ADOPTED THIS FORM ON 12/2/1982

CORNER CODE P-20

PO2578 S1/160FNE1/4SEC23

(B) Describe any record evidence, monument evidence, occupational evidence, testimonial evidence or any other material evidence you considered, and whether the monument was found or placed.

1885 RUGER VOL 2 PG 293 SET LS 14XBX3 1/2 ON LINE WITH CENTER OF SEC 23 & E 1/4 COR SEC 23. VAR 6-05 1356.41 TO E 1/4 COR SEC 23 & CENTER OF SEC 23, 1323.80 TO CENTER OF NE 1/4 COR SEC 23.

1968 BATTERMAN VOL 4 PG 447 STATES NOTHING ABOUT MON. BUT CALLS FOR COR & REFERENCES SAME WITH 4 PIPES. SHOWS ON LINE WITH N/S FENCE TO THE SOUTH & WEST OF THE CENTER OF RAYMOND RD. ADDED TIES WITH WIDOT DISK IN CONG.

FD CI MON. & 2 OF 3 WIDOT DISKS IN CONCRETE.

C) Was the corner restored through acceptance of (1) an obliterated evidence location, or, (2) a found perpetuated location?

ACCEPTED SAME. IN HARMONY WITH RUGER'S DISTANCE & SUBDIVISION OF SECTION.

D) Describe any material discrepancy between the location of the corner as restored or reestablished and the location of that corner as previously restored or reestablished by distance and direction. Show the discrepancy on the plan view drawing under (a), above. Show the distances between the corner as previously restored or reestablished and (1) the corner as restored or reestablished, and (2) to at least 4 of the witness monuments shown on the drawing in (a), above.

(E) Was the corner reestablished through lost corner proportionate methods? If so, show the method, including the directions and distances to other public land survey corners used as evidence or used for proportioning the corner location.

I, **Donald Barnes**, hereby certify that the corner location as identified by the corner code index was determined by me under my direction and control and that this U.S. Public Land Survey Monument Record is correct and complete to the best of my knowledge and belief.

Seal
Donald

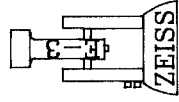
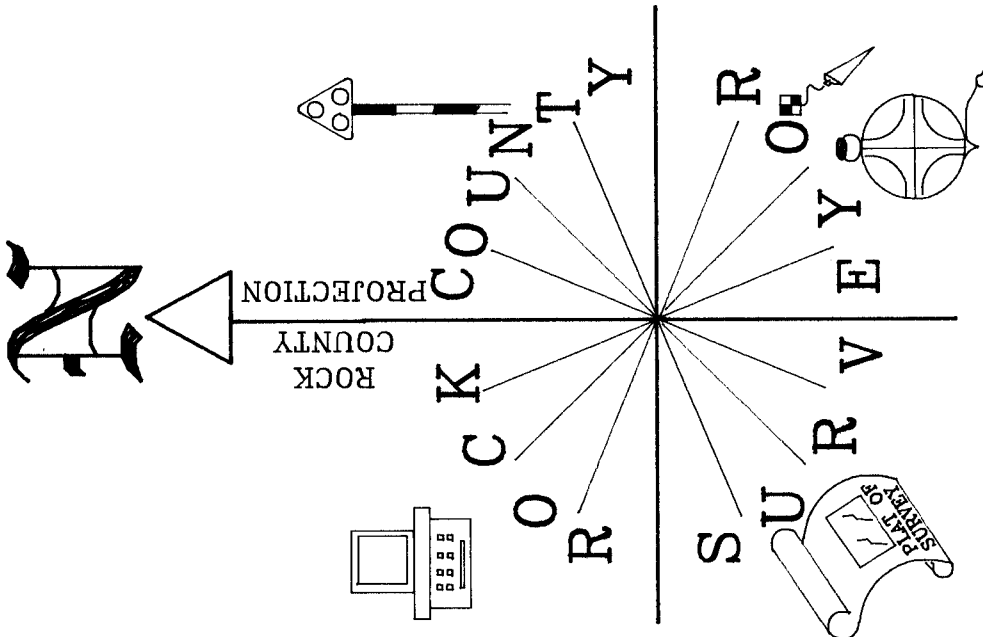
Embloss
Barnes

May 6, 2008

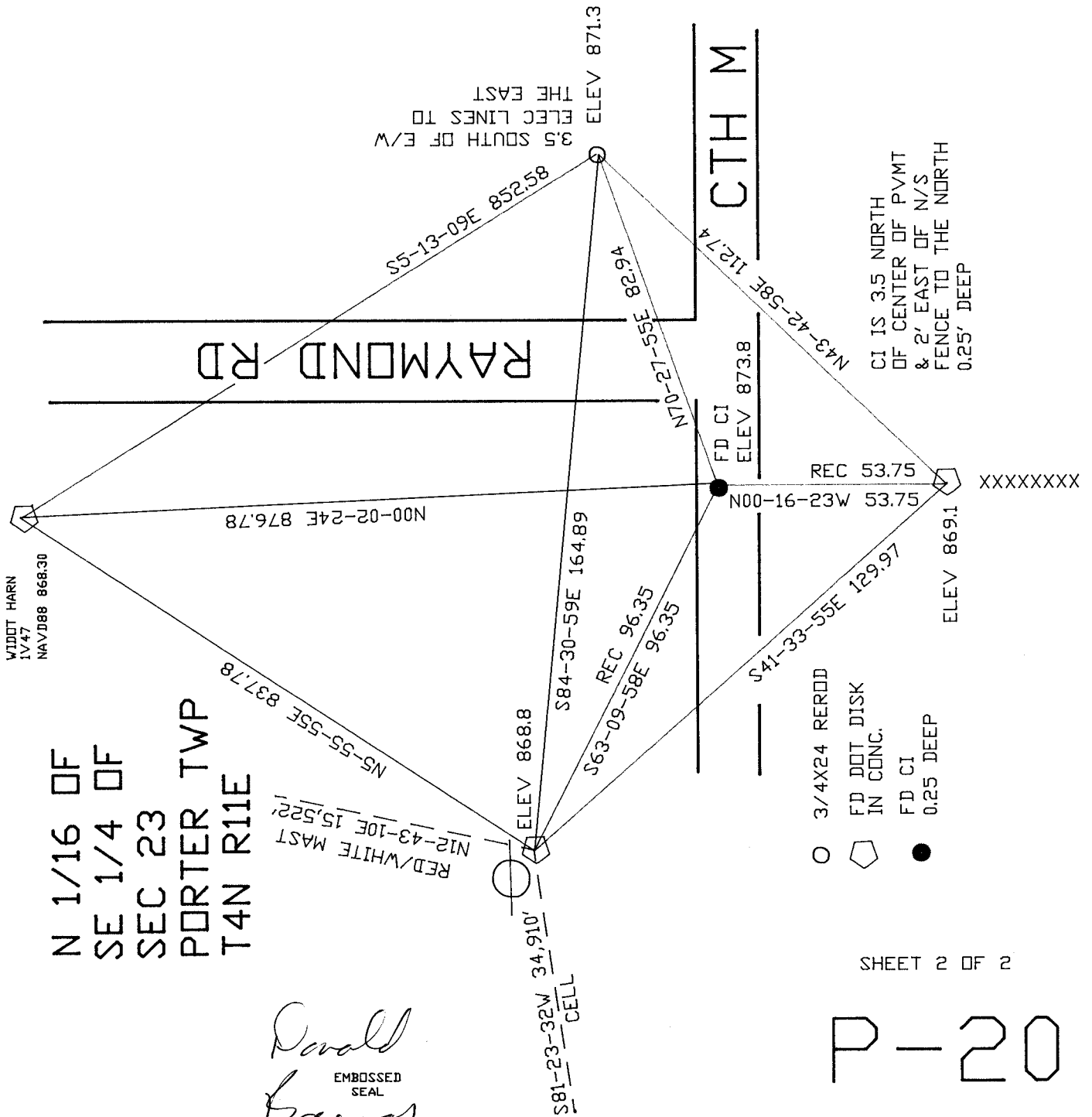
SHEET 1 OF 2

CORNER CODE **P-20**

A.E. 7.08 REQUIREMENT



NOT TO SCALE
OBSERVATION SHEET 343



N 1/16 OF
SE 1/4 OF
SEC 23
PORTER TWP
T4N R11E

Donald Baer
EMBOSSSED SEAL
May 6, 2008

- 3/4X24 REROD
- ◡ FD DOT DISK IN CONC.
- FD CI 0.25 DEEP

SHEET 2 OF 2

P-20

CI IS 3.5 NORTH OF CENTER OF PVMT & 2' EAST OF N/S FENCE TO THE NORTH 0.25' DEEP

3.5 SOUTH OF E/W ELEC LINES TO THE EAST