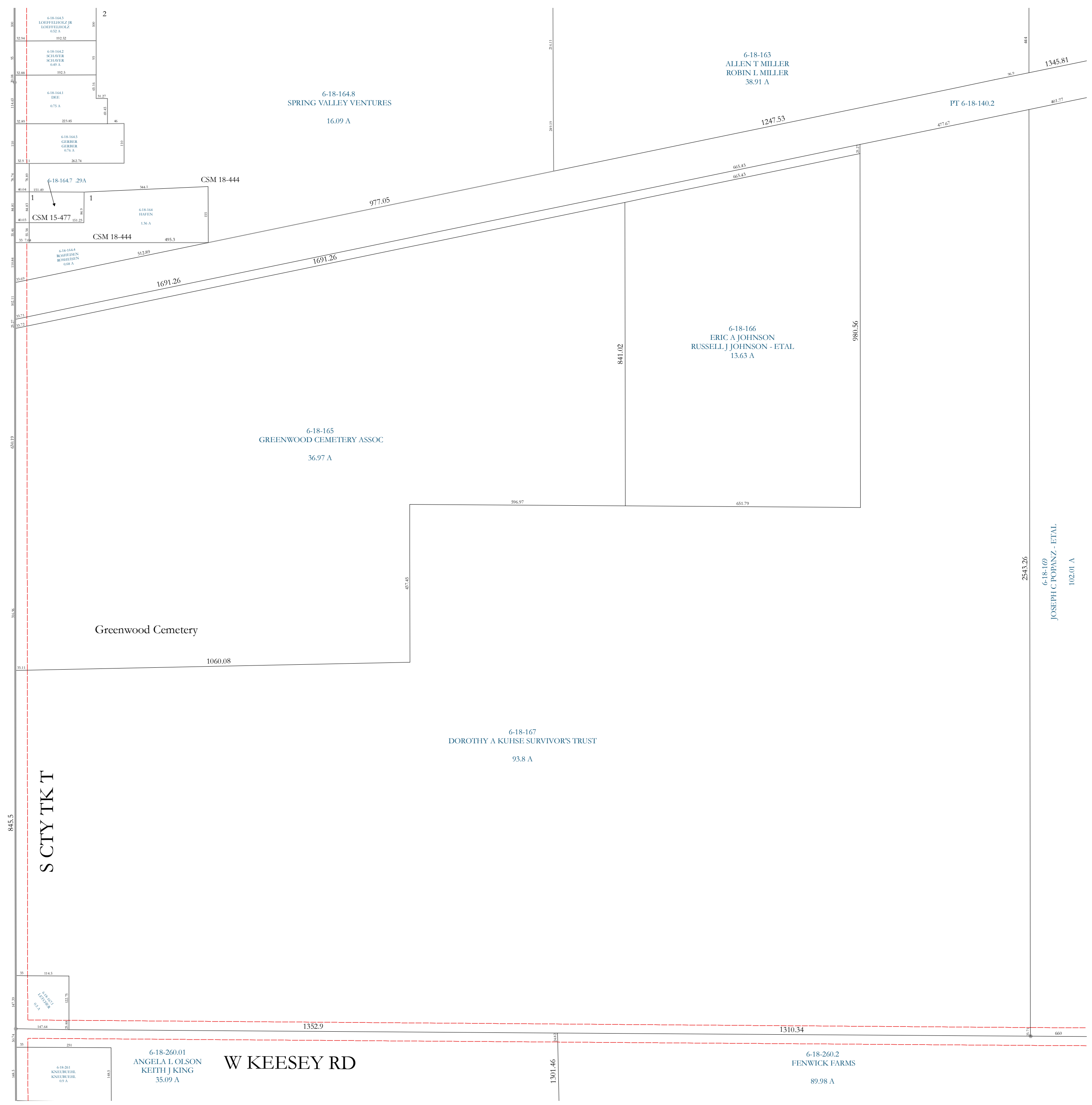


19 NW

Green County



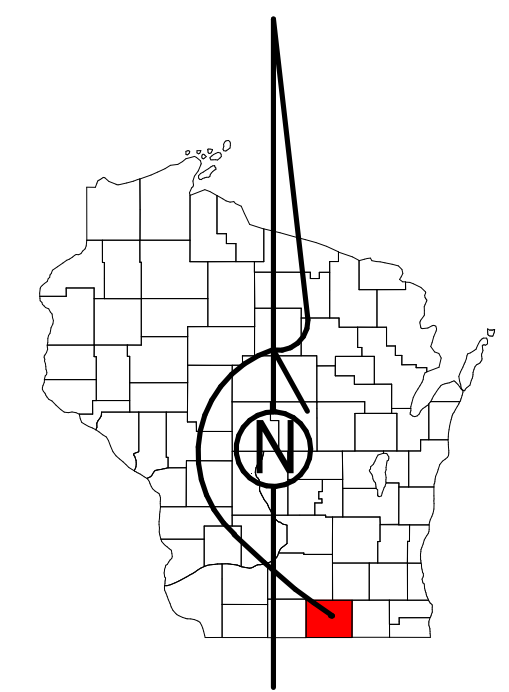
30 NW

Property Division Map

Town of Spring Valley

T. 2 N. - R. 10 E.

Section 19 SW



STATE OF WISCONSIN
COUNTY OF ROCK

PREPARED BY

REAL PROPERTY DESCRIPTION DEPARTMENT

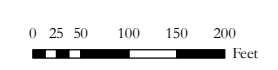
USING

ROCK COUNTY GEOGRAPHIC INFORMATION SYSTEM

DUPLICATION OF THIS MAP PROHIBITED WITHOUT THE WRITTEN CONSENT OF THE REAL PROPERTY DESCRIPTION DEPARTMENT.

THIS MAP WAS PREPARED PURSUANT TO SECTION 70.09 WIS. STATS. USING PUBLIC RECORDS. IT IS NOT INTENDED TO BE A SUBSTITUTE FOR AN ACTUAL FIELD SURVEY AND IS ADVISORY ONLY.

DISTANCES SHOWN ON THIS MAP WERE PRODUCED BY THE GIS SYSTEM AND ARE FOR REFERENCE ONLY. SEE DOCUMENT OF RECORD FOR ACTUAL DISTANCE.



- Gap
- Overlap
- City of Brodhead
- Village of Orfordville
- CSM
- CSMHYDRO
- CSMLOT
- CSMLOTHYDRO
- MFL
- dam
- easement
- hydro
- lots
- parcels
- parcelshydro
- roadrw

January 1, 2022

19 SW