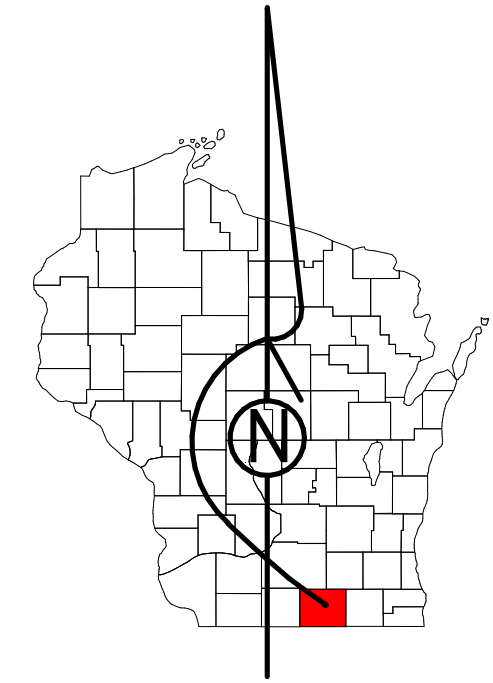


Property Division Map

Town
of
Rock

T. 2 N. - R. 12 E.
Section 14 SW



STATE OF WISCONSIN
COUNTY OF ROCK

PREPARED BY

**REAL PROPERTY DESCRIPTION
DEPARTMENT**
USING
**ROCK COUNTY
GEOGRAPHIC INFORMATION SYSTEM**

DUPLICATION OF THIS MAP PROHIBITED
WITHOUT THE WRITTEN CONSENT OF THE
REAL PROPERTY DESCRIPTION DEPARTMENT.

THIS MAP WAS PREPARED PURSUANT
TO SECTION 76.09 WIS. STATS.
USING PUBLIC RECORDS. IT IS NOT INTENDED
TO BE A SUBSTITUTE FOR AN
ACTUAL FIELD SURVEY
AND IS ADVISORY ONLY.

DISTANCES SHOWN ON THIS
MAP WERE PRODUCED BY
THE GIS SYSTEM AND ARE
FOR REFERENCE ONLY.
SEE DOCUMENT OF RECORD
FOR ACTUAL DISTANCE.

0 25 50 100 150 200
Feet

- Gap
- Overlap
- City of Janesville
- CSM
- CSMHYDRO
- CSMLOT
- CSMLOTHYDRO
- MFL
- dam
- casement
- hydro
- lots
- parcels
- parcelshydro
- roadrw

See Pages

January 1, 2022

14 SW

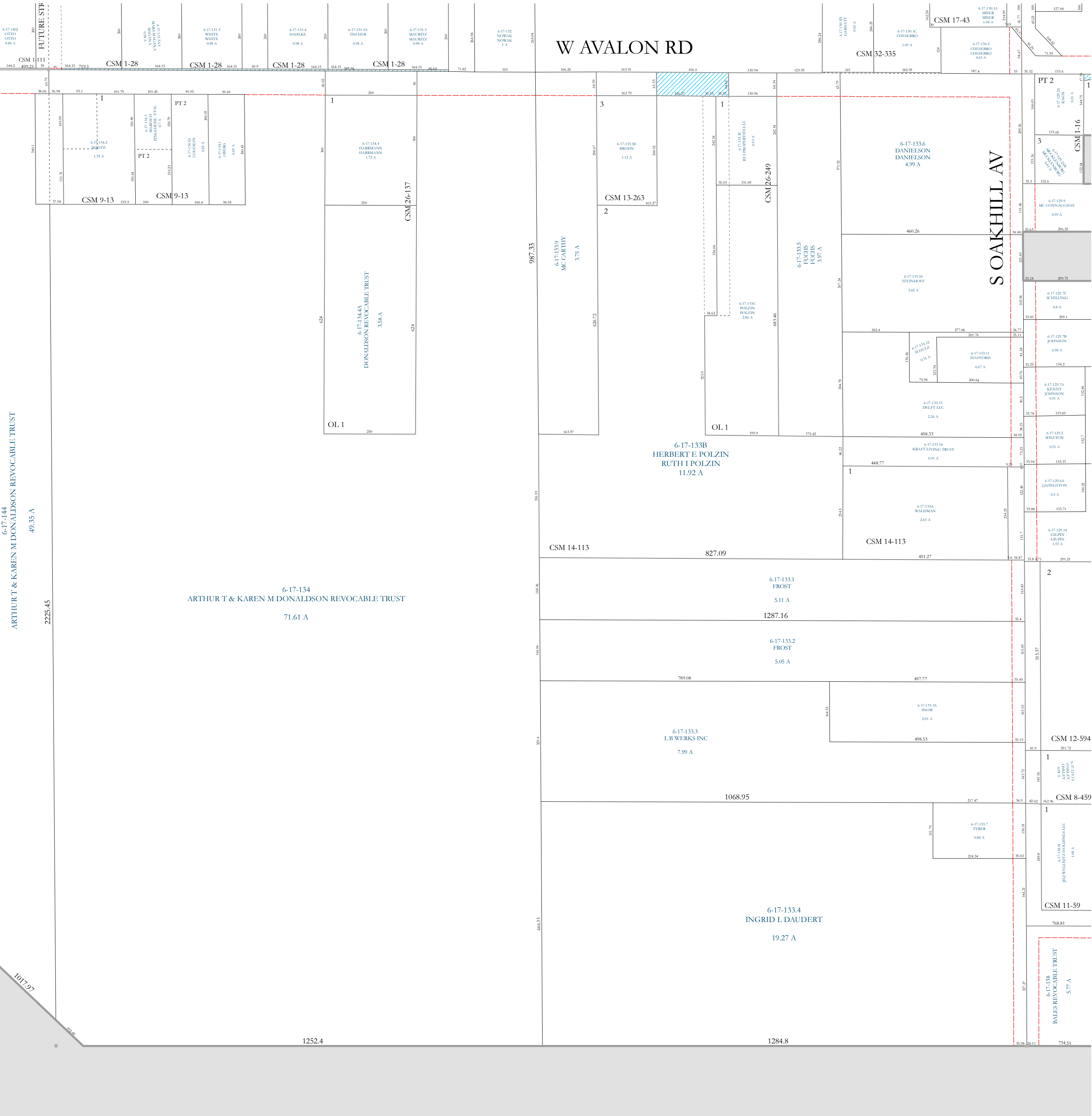
14 NW

W AVALON RD

CSM 32-335

CSM 17-43

S OAKHILL AV



6-17-144
ARTHUR T & KAREN M DONALDSON REVOCABLE TRUST
49.35 A

6-17-134
ARTHUR T & KAREN M DONALDSON REVOCABLE TRUST
71.61 A

6-17-133B
HERBERT E POLZIN
RUTH I POLZIN
11.92 A

6-17-133.4
INGRID L DAUDERT
19.27 A

15 SE

14 SE