

U.S. PUBLIC LAND SURVEY MONUMENT RECORD

For Public Land Survey Corners In: WI ADMINISTRATIVE CODE A-E 7.08 REQUIREMENT

T. 3 N. - R. 10 E. of the 4th P.M.

CORNER CODE INDEX

(PLACE "◆" SYMBOL AT PROPER PLSS CORNER LOCATION)

A	1	2	3	4	5	6	7	8	9	10	11	12	13	14	15	16	17	18	19	20	21	22	23	24	25	A
B			6			5		◆		4		3		2		1										B
C																										C
D																										D
E																										E
F																										F
G																										G
H																										H
J																										J
K																										K
L																										L
M																										M
N																										N
O																										O
P																										P
Q																										Q
R																										R
S																										S
T																										T
U																										U
V																										V
W																										W
X																										X
Y																										Y
Z																										Z
	1	2	3	4	5	6	7	8	9	10	11	12	13	14	15	16	17	18	19	20	21	22	23	24	25	

MAGNOLIA TWP
ROCK COUNTY WI

COORDINATES

(GNSS DERIVED VIA WISCORS)

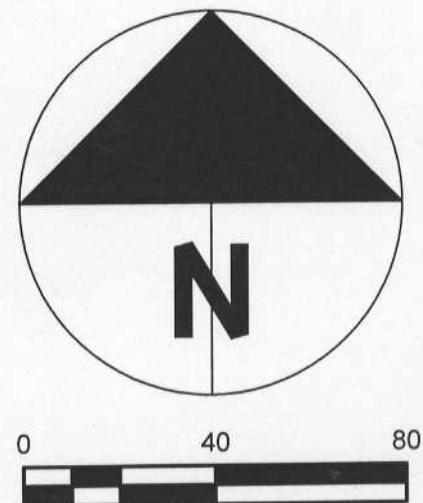
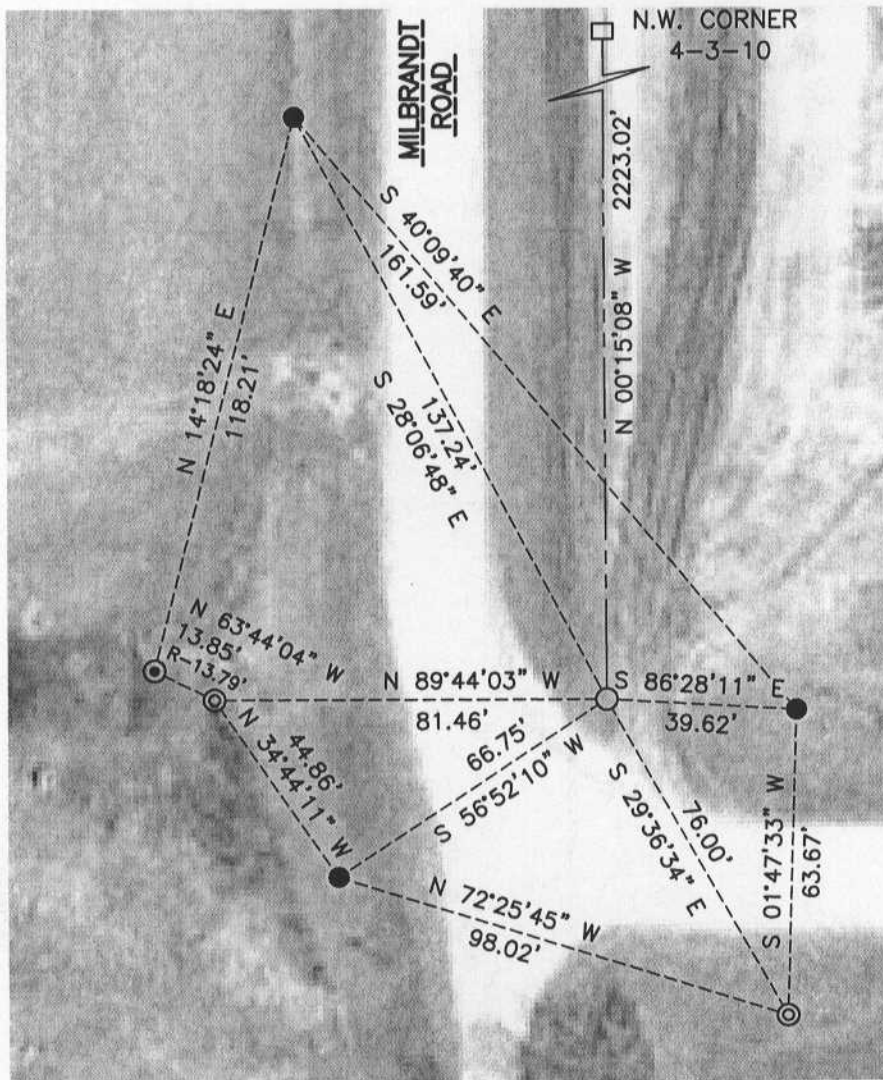
NORTHING: 294541.74 ELEV: N/A
EASTING: 411068.05

Hor. Datum: WCCS-ROCK, (NA2011)

Vertical Datum: NAVD 88, (If applicable)

(a) LEGEND

- - 5/8" x 24" REBAR SET, (RED CAP W/"PLSS WITNESS")
- - 5/8" x 24" REBAR SET, (NO CAP & buried 3", +/-)
- ⊙ - IRON REBAR FOUND
- ⊗ - IRON PIPE FOUND
- - BROKEN POLY FOUND



B) Describe any record evidence, monument evidence, occupational evidence, testimonial evidence or any other material evidence you considered, and whether the monument was found or placed.

At this location I recovered three, (3), witnesses from a tie-sheet, (C9), prepared by Don Barnes on July 30, 1991. An aluminum monument was found removed and laying intact in the tree/fence line South of the corner, along with one old pipe. The 1991 tie-sheets notes the monument as destroyed. Once a position was calculated I dug and found two, (2), old nails within close proximity of my calculation. A "Spike nail" is noted on a CSM as being set, (V. 11, Pg. 584), but no tie-sheet for the same exists. Similarly, a "Spike nail" is noted as found on a CSM recorded in V. 20, Pg. 167. I also surveyed a disturbed poly monument at the NE corner of Section 4. At the NE corner, Barnes has a "Placed Poly" note on his 8/12/91 tie sheet filed in Volume 6, Pg. 421 of records. A distance of 2222.98 feet distance from the NE corner to the E1/4 corner is also shown. My distance for the same is 2223.02 feet and indicated on the face of the map.

I established the position of the corner based on two of my found witnesses and set an uncapped 5/8x24" rebar at the corner. The position is further substantiated by the 8/12/91 tie sheet prepared by Barnes. The top of the rebar is 3", +/-, below grade.

C) Was the corner restored through acceptance of (1) an obliterated evidence location, or, (2) a found perpetuated location?

Restored through found witness monuments.

D) Describe any material discrepancy between the location of the corner as restored or reestablished and the location of that corner as previously restored or reestablished by distance and direction. Show the discrepancy on the plan view drawing under (a), above. Show the distances between the corner as previously restored or reestablished and (1) the corner as restored or reestablished, and (2) to at least 4 of the witness monuments shown on the drawing in (a), above.

All current tie distances are shown with the most recent tie distances noted with an "R", if applicable.

(E) Was the corner reestablished through lost corner proportionate methods? If so, show the method, including the directions and distances to other public land survey corners used as evidence or used for proportioning the corner location.

N/A

I, Jason R. Houle, hereby certify that the corner location as identified by the corner code index was determined by me under my direction and control and that this U.S. Public Land Survey Monument Record is correct and complete to the best of my knowledge and belief.

CORNER CODE: C-9(1)
(A.E. 7.08 REQUIREMENT)

