

Paper weight-110# (minimum)

Black nonfading ink required

U.S. PUBLIC LAND SURVEY MONUMENT RECORD

For Public Land Survey Corners In:
T. 3 N. R. 10 E. 4th P.M.

WI ADMINISTRATIVE CODE A-E 7.08 REQUIREMENT
REV 10/23/2004 USMONREC.DWG

CORNER CODE INDEX

	1	2	3	4	5	6	7	8	9	10	11	12	13	14	15	16	17	18	19	20	21	22	23	24	25		
A																											A
B																											B
C																											C
D																											D
E																											E
F																											F
G																											G
H																											H
J																											J
K																											K
L																											L
M																											M
N																											N
O																											O
P																											P
Q																											Q
R																											R
S																											S
T																											T
U																											U
V																											V
W																											W
X																											X
Y																											Y
Z																											Z

MAGNOLIA TWP
ROCK COUNTY WI

IF AVAILABLE
ROCK COUNTY COORDINATES PREFERRED

North _____ Elev. _____

East _____

Hor. Datum _____ Vert. Datum _____

LATITUDE _____ ELLIPS. HT. _____

LONGITUDE _____

NAD83(91) _____ NETWORK ADJ. YR 2010

GPS (X) _____ TRAVERSE (X) X

BASED ON THE FOLLOWING CONTROL:

PLACE MONUMENT SYMBOL AT PROPER LOCATION ON ABOVE INDEX

CORNER MONUMENT

WITNESS MONUMENT

(a) BEARINGS ARE BASED ON: ROCK COUNTY PROJECTION

FIELD BOOK _____ PAGE # _____
OR OBSERVATION SHEET _____

SHEET 1 OF 5

SHOW A PLAN VIEW DRAWING DEPICTING THE CORNER MONUMENT AND SURROUNDING PHYSICAL FEATURES, INCLUDING THE EXCAVATION AREA AND DEPTH.

PLANNING & ZONING COMMITTEE ADOPTED THIS FORM ON 12/2/1982

CORNER CODE 2-13(1)

MA627 SE COR SEC 33

(B) Describe any record evidence, monument evidence, occupational evidence, testimonial evidence or any other material evidence you considered, and whether the monument was found or placed.

- 1833 MULLETT SOUTH BOUNDARY T3N R10E WEST ON SOUTH SIDE SEC 33
 - 528 ENTER MARSH
 - 1650 LEAVE MARSH
 - 2640 SET QUARTER SECTION POST BUR OAK 14 N49W 27.0'; BUR OAK 4 N72E 56.0'
 - 5280 SET POST CORNER SECTIONS 32 & 33; BUR OAK 14 N87W 22'; BUR OAK 15 N47W 17' LAND ROLLING SECOND RATE BUR OAK, RED ROOT, HAZEL ROSE WILLOW & C
- 1833 MULLETT SOUTH BOUNDARY T3N R10E WEST ON SOUTH SIDE SEC 34
 - 2640 SET QUARTER SECTION POST IN PRAIRIE & MADE A MOUND
 - 3432 LEAVE PRAIRIE
 - 5280 SET POST CORNER SECTIONS 33 & 34 BUR OAK 16 N31E 44.22'; BUR OAK 16 N78W 29.04' LAND ROLLING SECOND RATE WESTERN PART TIMBERED WITH B ? & BUR OAK, HAZEL RED ROOT & C
- 1833 HARRISON WEST BET SECS 33 & 34
 - 198.0 WET PRAIRIE
 - 1188.0 LEAVE SAME & ENTER SMALL GROVE OF BURR OAK TIMBER
 - 2640.00 LEAVE PRAIRIE & SET QUARTER SEC COR. BEARING {BURR O 8 S19E 106.92'; BURR O 12 S44W 333.33'} BUR O 8; BUR O 12} MARKED
 - 3547.50 TRAIL CRS S.W.
 - 5280.00 SET COR TO SECS 27,28,33,34 POST & RAISED MOUND. LAND 1ST 1/2 MILE ROLLING 2ND RATE WITH TIMBER OF BURR OAK. 2ND 1/2 LEVEL PRAIRIE 1ST RATE
- 1834 MILLER NORTH BETWEEN SECS 3 & 4
 - 1271.16 BUR OAK 12 IN DIA
 - 2040.72 BUR OAK 14 IN DIA
 - 2640.00 SET 1/4 SEC POST BUR O 12 S64W 45.54'; BUR OAK 12 N17E 116.82'
 - 4377.12 BUR OAK 12" IN DIA
 - 5074.74 INTERSECTED NORTH BOUNDARY 68.64 WEST OF POST. SET POST CORNER OF SECTIONS 3 & 4. BURR OAK 14 S57E 64.02, BUR OAK 12 S21W 50.82'. LAND ROLLING 2ND RATE TIMBER OAK & HICKORY OAK & HAZEL UNDERGROWTH
- 1858 MAGNOLIA TWP RD BK1 PG 19 "A HIGHWAY BE LAID OUT IN SAID TOWNS OF THE WIDTH OF 66' & HAVE CAUSED A SUREY THERE OF TO BE MADE AS FOLLOWS TO WIT: THE CENTER LINE OF SAID HIGHWAY IS TO COMMENCE AT THE NORTH EAST CORNER OF SECTION FOUR OF SPRING VALLEY AND TO RUN THENCE WEST ON THE LINE BETWEEN SPRING VALLEY AND MAGNOLIA TO THE NORTH WEST CORNER OF SAID SECTION.
- 1861 RUGER VOL 1 PG 150 STATES NOTHING ABOUT THE NE CORNER SEC 4 BUT SHOWS VAR 7-16 2669.04 TO THE N 1/4 CORNER OF SECTION 3 AND VAR 5-17 2375.34 TO THE W 1/4 CORNER OF SECTION 3. ALSO SHOWS THAT THE N 1/4 CORNER OF SECTION 3 IS ON A STRAIGHT LINE BETWEEN THE NW AND NE CORNERS OF SECTION 3 & MID WAY.
- 1867 LOCKE VOL 1 PG 288 & 04455 @ NE COR SEC 4 FOUND STUMPS OF BTS & OLD STAKE. SET STAKE SURROUNDED BY 4 FLAT LIMESTONES. @ SE COR SEC 33 SHOWS EAST 68.64 OF NE COR SEC 4. @ NE COR SEC 4 FD OLD STAKE & STUMP OF W B.T. & OLD STAKE. SET STAKE

EMBOSSSED

SEAL

Donald B. Barnes

Jan 13 2011

SHEET 1 OF 5
CORNER CODE Z-13(1)

MA627 SE COR SEC 33

- 1874 RUGER VOL 2 PG 133 @ NE COR SEC 4 FOUND STAKE SURROUNDED BY STONES. ALSO FOUND STUMP OF SW BT & WHERE STUMP OF SE BT HAD BEEN DUG UP. SHOWS EAST 68.64 TO SE COR SEC 33 FD STAKE & LIMESTONE ON N.E. SIDE OF STAKE & FD WHERE B.T.S STUMPS HAD BEEN DUG UP @ SE CORNER OF SECTION 33. WESTERLY VAR 6-35 1311.75 TO DROVE STAKE SURROUNDED WITH 3 HH STONES @ S 1/16TH COR SEC SE 1/4 SEC 33. CONTINUED VAR 6-35 1311.75 TO FD STAKE @ 4 LIMESTONES ALSO FD STUMPS OF B.T.S @ S 1/4 COR SEC 33. NORTHERLY VAR 7-20 664.95' DROVE STAKE & SURROUNDED IT WITH 4 LIMESTONES, CONTINUED VAR 7-20 664.95' DROVE STAKE & IT WITH 4 LIMESTONES @ 1/16TH COR, CONTINUED VAR 7-20 664.95' DROVE STAKE & IT WITH HH, & CONTINUED VAR 7-20 664.95' TO FD LIMESTONE 26X6X5. ALSO @ E 1/4 COR SEC 33 FD SE B.T. IT IS DISTANT 164' INSTEAD OF 162
- 1874 RUGER VOL 2 PG 134 SHOWS SE COR SEC 33 EAST OF NE COR SEC 4. EASTERLY VAR 6-09 1315.82 DROVE STAKE SURROUNDED BY 3 HH @ S 1/16TH CORNER. CONTINUE EASTERLY VAR 6-09 1315.82 TO FD OLD STAKE DEEP IN GROUND & LIMESTONE ON TOP OF IT @ S 1/4 SEC 34. SET LIMESTONE 20X7X6 SURROUNDED WITH 4 HH @ S 1/4 COR SEC 34. S 1/4 COR SEC 34 IS 31.85' EAST OF N 1/4 COR SEC 3.
- 1965 BATTERMAN JR. VOL 4 PG 213 STATES THAT HE DID NOT DIG FOR NE COR SEC 4. HE STATES THAT HE DUG AND FOUND NOTHING AT THE SW CORNER OF SECTION 34 & S 1/16TH COR OF SW 1/4 SEC 34. SHOWS 1315.6 BETWEEN HOLES & S 1/4 COR SEC 34 WHERE HE FD SANDSTONE 5X4 SETTING ON END SURROUNDED BY SANDSTONE @ S 1/4 COR SEC 34 & FD LIMESTONE 7X6X SITTING ON END SURROUNDED BY HHS @ N 1/4 COR SEC 4.
- 1973 LEE VOL 5 PG 3 SHOWS THE SE COR SEC 33 & THE NE COR SEC 4. REFERENCED THEM BUT STATES NOTHING ABOUT THEM. 2610.26 TO S 1/4 COR SEC 33 & 2666.12 TO E 1/4 COR SEC 33
- 1973 LEE CSM VOL 3 PG 212. USED FOUND ALUMINUM MONUMENT FOR SE COR SEC 33 FOR SURVEY.
- 1988 BARNES VOL 6 PG 391 SHOWS RECORD DISTANCES.
- 1998 BARNES VOL 6 PG 393 NOTE: BEARINGS ARE STATE PLANE. TRAVERSE STARTED AT SI. GEOD #579. SHOWS RECORD DISTANCES.
- 1990 BARNES A-13 & Z-13 ESTABLISHED CORNER ON LINE WITH SE CORNER OF SECTION 33 AND S 1/4 CORNER OF SECTION 33 AT RECORD DISTANCE (68.64'). THIS IS IN HARMONY WITH RECORD DISTANCES. REFERENCED SAME. [FIELD BOOKS SHOWS I ALSO DUG A 5' DEEP HOLE AT THE SE COR SEC 33.
- 1990 BARNES VOL 6-410 FROM NE COR SEC 4 N89-46-25W 2571.69 TO N 1/4 COR SEC 4, S89-39-50E 2667.02 TO N 1/4 COR SEC 3, S2-33-43W 2383.27 TO E 1/4 COR SEC 4. FROM SE COR SEC 33 N89-46-14W 2625.32 TO S 1/4 COR SEC 33, S89-39-57E 2629.68 TO S 1/4 COR SEC 34, & N1-51-11W 2665.35 TO E 1/4 COR SEC 33
- 1992 COMBS CSM 16-140 FD POLY MON. @ NE COR SEC 4. WEST 2373.45 TO NE CSM COR, THENCE WEST 141.12 TO PK @ S 1/4 COR SEC 33; THENCE S89-21-55W 32.33 TO ALUM @ N 1/4 COR SEC 4. [IT APPEARS THE FD PK IS ACTUALLY MY TRAVERSE STATION & NOT A SEC CORNER.]
- 1994 COMBS #9583 CALLS FOR A PK @ NE COR SEC 4. 2383.28 TO E 1/4 COR SEC 4

EMBOSSSED
SEAL
Donald Barnes
Jan 13 2011

SHEET 2 OF 5
CORNER CODE Z-13(1)

MA627 SE COR SEC 33

REVIEW AND COMPARISON OF VOL 6 PG 410 REAFFIRMS MY DECISIONS IN ESTABLISHING THE POSITION OF THE NE COR SEC 4 & THE SE COR SEC 33. NOV 2010 A REPORT OF NOT FINDING A SURFACE MONUMENT OR MONUMENT AT THE NE COR SEC 4 & THE SE COR SEC 33 REAFFIRMS MY RECORDS NOT CALLING FOR MONUMENTS. ALSO THE REPORT STATED THE SW REFERENCE PIPE WAS FOUND AND

THE SOUTHERLY & NW REFERENCE PIPES WERE NOT FOUND. REPORTED THE ALUMINUM MONUMENTS WERE STARTING TO DISLOVE. I USED THE OLD OBSERVATIONS TO COMPUTE ANGLE AND DISTANCES FROM THE ALUM. MONUMENTS THAT LEE PLACED.

C) *Was the corner restored through acceptance of (1) an obliterated evidence location, or, (2) a found perpetuated location?*

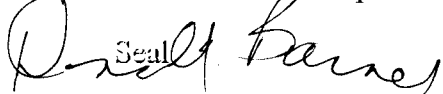
ACCEPTED THE 1990 POSITIONS.

D) *Describe any material discrepancy between the location of the corner as restored or reestablished and the location of that corner as previously restored or reestablished by distance and direction. Show the discrepancy on the plan view drawing under (a), above. Show the distances between the corner as previously restored or reestablished and (1) the corner as restored or reestablished, and (2) to at least 4 of the witness monuments shown on the drawing in (a), above.*

DID NOT ACCEPT FOUND LEE'S ALUMINUM MONUMENTS AS SHOWN IN THE DRAWING.

(E) Was the corner reestablished through lost corner proportionate methods? If so, show the method, including the directions and distances to other public land survey corners used as evidence or used for proportioning the corner location.

I, **Donald Barnes**, hereby certify that the corner location as identified by the corner code index was determined by me under my direction and control and that this U.S. Public Land Survey Monument Record is correct and complete to the best of my knowledge and belief.

 Seal Barnes

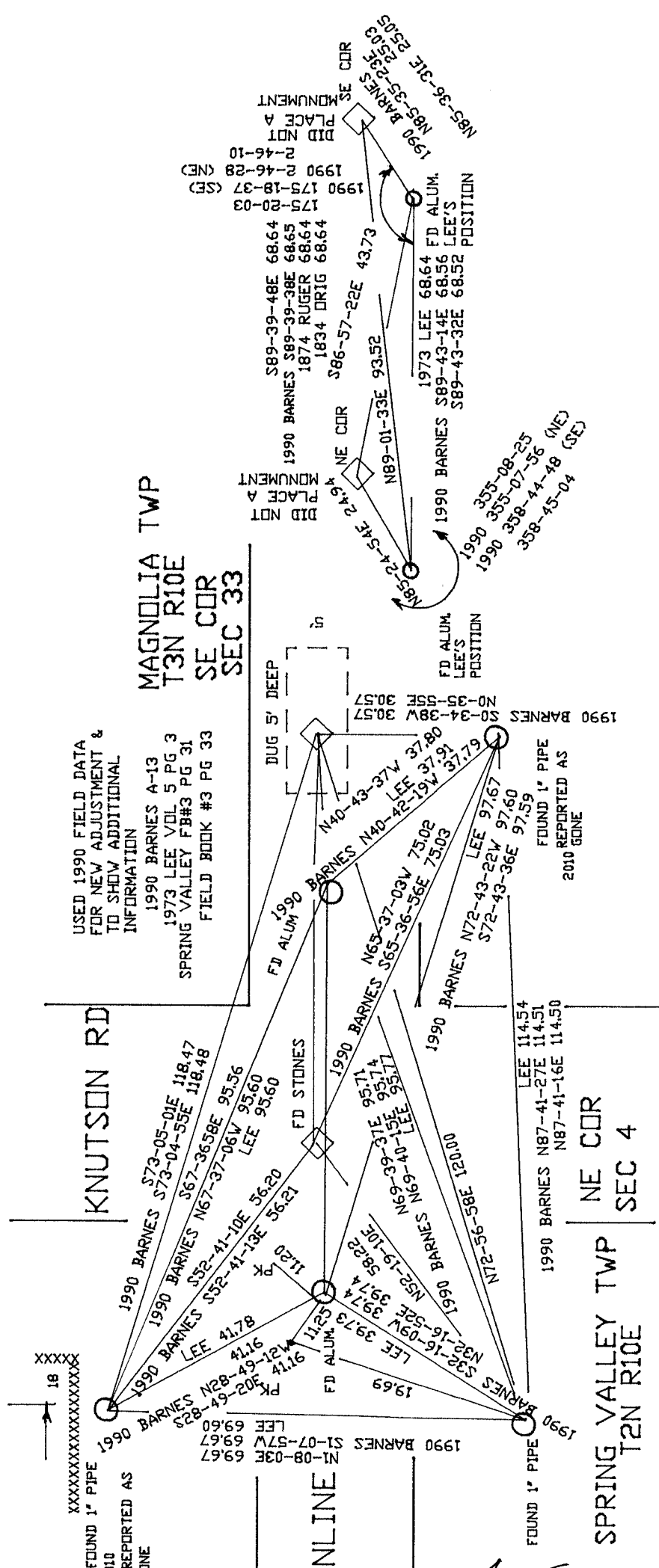
Emboss

Jan 13 2011

SHEET 3 OF 5

CORNER CODE Z-13(1)

A.E. 7.08 REQUIREMENT



USED 1990 FIELD DATA FOR NEW ADJUSTMENT & TO SHOW ADDITIONAL INFORMATION
 1990 BARNES A-13
 1973 LEE VOIL 5 PG 3
 SPRING VALLEY FB#3 PG 31
 FIELD BOOK #3 PG 33

MAGNOLIA TWP
 T3N R10E
 SE COR
 SEC 33

KNUTSON RD

TOWNLINE RD

SPRING VALLEY TWP
 T2N R10E
 NE COR
 SEC 4

SHEET 4 OF 5
 Z-13(1)

Embossed Seal
 Embossed Seal
 Jan 13, 2011

SEC 33

MAGNOLIA TWP

SW TO SE CDR SEC 33
 2010 BARNES 5250.70
 1990 BARNES 5250.64
 1973 LEE 5220.52
 1874 RUGER 5242.05
 1833 DRIG 5280.00

1990 BARNES 2610.39
 1973 LEE 2625.32
 1867 LOCKE 2651.88
 1874 RUGER V6-48 2618.55

LEE S 1/4 - MY SE CDR
 S89-46-17E 2640.31
 S89-46-14E 2625.32
 1874 RUGER 6-35 2623.50

LEE'S ALUM-ALUM
 S89-43-37E 2615.33
 1973 LEE 2610.26

1990 BARNES 88-55-03
 LEE 89-13-11
 89-13-29
 1/4 33-FD ALUM-E1/4 CDR

NO-30-09W 2665.79
 1990 BARNES 2665.35
 1973 LEE 2666.12

1867 LOCKE 2621.52
 S89-55-27E 2597.64

FD ALUM NEAR NE SEC 4
 S89-43-44E 2572.79

S89-46-32E 2597.64
 FD ALUM NEAR NE SEC 4
 S89-43-44E 2572.79

FD ALUM *
 LEE'S CDR

RUGER'S STONE
 FD STONE

FD ALUM
 LEE'S CDR

ESTABLISHED
 CDRNER

N85-36-32E 25.06

N85-24-54E 24.95

SEC 4
 SPRING VALLEY TWP
 T2N R10E

NW CDR
 SEC 4

LEE'S POSITION
 CDR S 1/4

LEE'S CDR
 FD ALUM *

FD ALUM *
 LEE'S CDR

RUGER'S STONE
 FD STONE

FD ALUM
 LEE'S CDR

ESTABLISHED
 CDRNER

N85-36-32E 25.06

N85-24-54E 24.95

SEC 4
 SPRING VALLEY TWP
 T2N R10E

NW CDR
 SEC 4

LEE'S POSITION
 CDR S 1/4

LEE'S CDR
 FD ALUM *

FD ALUM *
 LEE'S CDR

RUGER'S STONE
 FD STONE

FD ALUM
 LEE'S CDR

ESTABLISHED
 CDRNER

N85-36-32E 25.06

N85-24-54E 24.95

SEC 4
 SPRING VALLEY TWP
 T2N R10E

Daniel Barnes
 Jan 13 2011

Z-13(1)

S OF SHEETS POLY

1874 RUGER 2659.80
 W42-20-15
 124992
 SEC 33 CDR

1990 BARNES 88-55-03
 LEE 89-13-11
 89-13-29
 1/4 33-FD ALUM-E1/4 CDR

LEE S 1/4 - MY SE CDR
 S89-46-17E 2640.31
 S89-46-14E 2625.32
 1874 RUGER 6-35 2623.50

1990 BARNES 2610.39
 1973 LEE 2625.32
 1867 LOCKE 2651.88
 1874 RUGER V6-48 2618.55

1867 LOCKE 2621.52
 S89-55-27E 2597.64

NW CDR
 SEC 4

LEE'S POSITION
 CDR S 1/4

LEE'S CDR
 FD ALUM *

FD ALUM *
 LEE'S CDR

RUGER'S STONE
 FD STONE

FD ALUM
 LEE'S CDR

ESTABLISHED
 CDRNER

N85-36-32E 25.06

N85-24-54E 24.95

SEC 4
 SPRING VALLEY TWP
 T2N R10E