

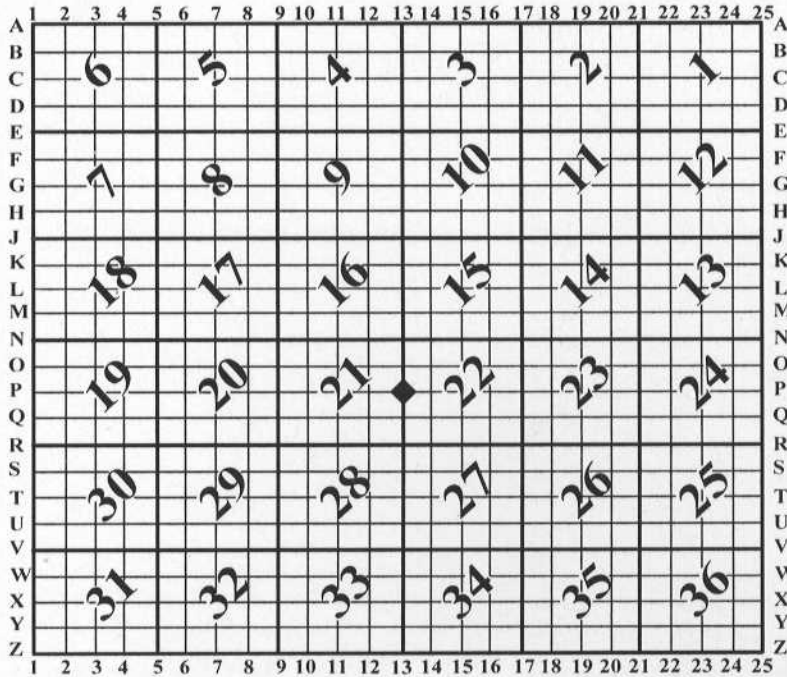
# U.S. PUBLIC LAND SURVEY MONUMENT RECORD

For Public Land Survey Corners In: WI ADMINISTRATIVE CODE A-E 7.08 REQUIREMENT

T. 3 N. - R. 10 E. of the 4th P.M.

### CORNER CODE INDEX

(PLACE "◆" SYMBOL AT PROPER PLSS CORNER LOCATION)



MAGNOLIA TWP  
ROCK COUNTY WI

### COORDINATES

(GNSS DERIVED VIA WISCORS)

NORTHING: 278587.88 ELEV:         

EASTING: 416478.84

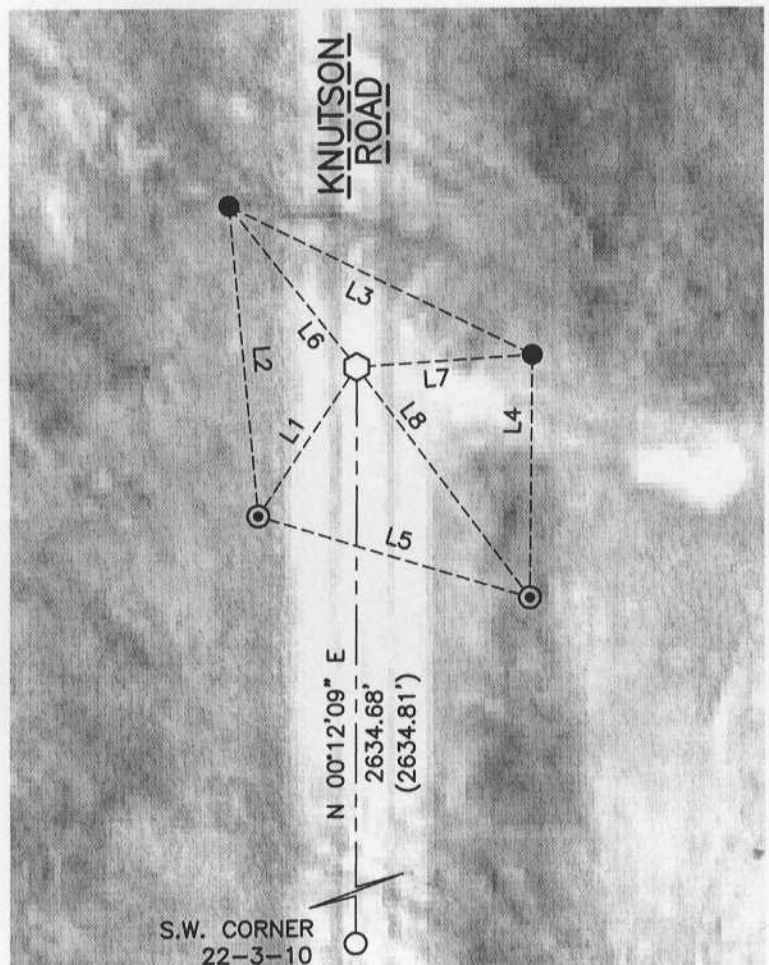
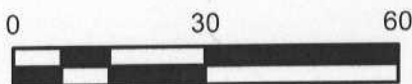
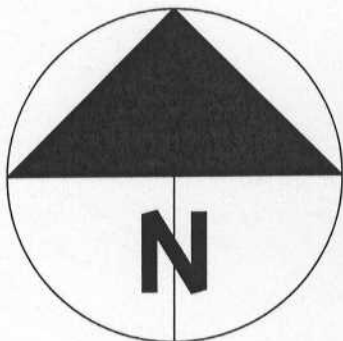
Hor. Datum: WCCS-ROCK, NAD83 (NA2011)

Vertical Datum: NAVD 88

**(a) LEGEND**

- - 5/8" x 24" REBAR SET, (RED CAP W/"PLSS WITNESS")
- - ALUMINUM MONUMENT FOUND
- ⊙ - IRON REBAR FOUND
- ⬡ - COTTON GIN SPINDLE SET
- (#) - DISTANCE FROM PREVIOUS TIE-SHEET

LINE	BEARING	DISTANCE
L1	S 33°29'03" W	27.93'
L2	N 05°17'31" W	48.83'
L3	S 63°29'26" E	52.75'
L4	S 00°39'15" W	38.14'
L5	N 72°50'16" W	44.23'
L6	N 38°10'21" W	32.22'
L7	N 86°15'15" E	27.35'
L8	S 36°27'26" E	45.19'



SHEET 1 OF 2

FIELD BOOK MAGNOLIA 2013 PAGE # 12

CORNER CODE P-13(1)

**B) Describe any record evidence, monument evidence, occupational evidence, testimonial evidence or any other material evidence you considered, and whether the monument was found or placed.**

I found two witness monuments & the Southwest corner of Section 22-3-10 as show on U.S. PLSS monument record P-13. The two witnesses found were accepted and the basis for computing the corner location. The distance to the SW corner checks to 0.13 feet and I set a cotton gin spindle at the corner. Two additional witnesses were set per the sketch.

**C) Was the corner restored through acceptance of (1) an obliterated evidence location, or, (2) a found perpetuated location?**

Found perpetuated location.

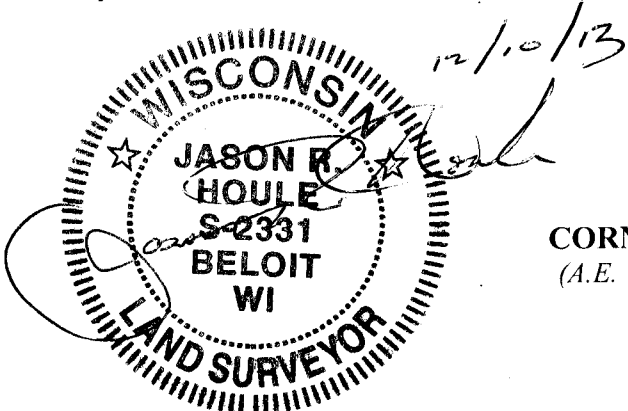
**D) Describe any material discrepancy between the location of the corner as restored or reestablished and the location of that corner as previously restored or reestablished by distance and direction. Show the discrepancy on the plan view drawing under (a), above. Show the distances between the corner as previously restored or reestablished and (1) the corner as restored or reestablished, and (2) to at least 4 of the witness monuments shown on the drawing in (a), above.**

The 0.13 foot discrepancy is relative to a 1996 traverse and given the elevation change in the area/terrain, is not a concern.

**(E) Was the corner reestablished through lost corner proportionate methods? If so, show the method, including the directions and distances to other public land survey corners used as evidence or used for proportioning the corner location.**

N/A

*I, Jason R. Houle, hereby certify that the corner location as identified by the corner code index was determined by me under my direction and control and that this U.S. Public Land Survey Monument Record is correct and complete to the best of my knowledge and belief.*



**CORNER CODE: P-13(1)**  
(A.E. 7.08 REQUIREMENT)