

U.S. PUBLIC LAND SURVEY MONUMENT RECORD

For Public Land Survey Corners in:

WI ADMINISTRATIVE CODE A-E 7.08 REQUIREMENT

T. 3N., R. 10E

CORNER CODE INDEX

A	1	2	3	4	5	6	7	8	9	10	11	12	13	14	15	16	17	18	19	20	21	22	23	24	25
B																									
C	6																								
D																									
E																									
F																									
G	1																								
H																									
J																									
K	18																								
L																									
M																									
N																									
O																									
P	19																								
Q																									
R																									
S	30																								
T																									
U																									
V																									
W																									
X	31																								
Y																									
Z																									

MAGNOLIA TWP

ROCK COUNTY WI

IF AVAILABLE
ROCK COUNTY COORDINATES PREFERRED

North _____ Elev. _____

East _____

Hor. Datum _____ Vert. Datum _____

LATITUDE _____ ELLIPS. HT. _____

LONGITUDE _____

GPS (X) _____ TRAVERSE (X) _____

BASED ON THE FOLLOWING CONTROL:

PLACE MONUMENT SYMBOL AT PROPER LOCATION ON ABOVE INDEX

CORNER MONUMENT

WITNESS MONUMENT

(a)

BEARINGS ARE BASED ON:

OBSERVATION

FIELD BOOK SHEET PAGE # 567

SHEET 1 OF 2

SHOW A PLAN VIEW DRAWING DEPICTING THE CORNER MONUMENT AND SURROUNDING PHYSICAL FEATURES, INCLUDING THE EXCAVATION AREA AND DEPTH.

PLANNING & ZONING COMMITTEE ADOPTED THE ABOVE FORM ON 12/2/1982

CORNER CODE N13(1)

MA567

(B) Describe any record evidence, monument evidence, occupational evidence, testimonial evidence or any other material evidence you considered, and whether the monument was found or placed.

1868 LOCKE FOUND STUMP OF E. BT & OLD STAKE SET BR. OAK STAKE. 2680.59 TO S 1/4 COR SEC 16 & 2662.44 TO E 1/4 COR SEC 16.

1869 LEE VOL 1 PG 356 FD BR OAK STAKE AT CORNER 2664.42 TO N 1/4 COR SEC 22.

1964 BATTERMAN JR. DUG LARGE 15X5X4 FOUND NOTHING.

1978 BARNES VOL 5 PG 389 SET CORNER AT INTERSECTION OF CENTER OF CTH A & CENTER KNUTSON ROADS. THIS WAS IN HARMONY WITH THE ROAD DEDICATION RECORDS, OCCUPATION AT LINES & SURVEY BY LEE (1869) TO THE EAST. REFERENCED SAME. SET ALUM. MON. 3/27/78

1978 BARNES VOL 5 PG 391 USED CORNER TO ESTABLISH THE N 1/4 COR SEC 22. CALLS FOR N/S FENCE 1334 TO THE EAST. 2662.80 TO N 1/4 COR SEC 22.

FOUND ALUMINUM MONUMENT WITH TOP BROKE OFF. FOUND REFERENCE PIPES.

C) Was the corner restored through application of (1) an established evidence location, or, (2) a found perpetuated location? ACCEPTED FOUND PERPETUATED LOCATION.

D) Describe any material discrepancy between the location of the corner as restored or reestablished and the location of that corner as previously restored or reestablished by distance and direction. Show the discrepancy on the plan view drawing under (a), above. Show the distances between the corner as previously restored or reestablished and (1) the corner as restored or reestablished, and (2) to at least 4 of the witness monuments shown on the drawing in (a), above.

(E) Was the corner reestablished through lost corner proportionate methods? If so, show the method, including the directions and distances to other public land survey corners used as evidence or used for proportioning the corner location.

I, Donald Barnes, hereby certify that the corner location as identified by the corner code index was determined by me under by direction and control and that this U.S. Public Land Survey Monument Record is correct and complete to the best of my knowledge and belief.

Donald Barnes
seal

AUGUST 23, 1996

emboss

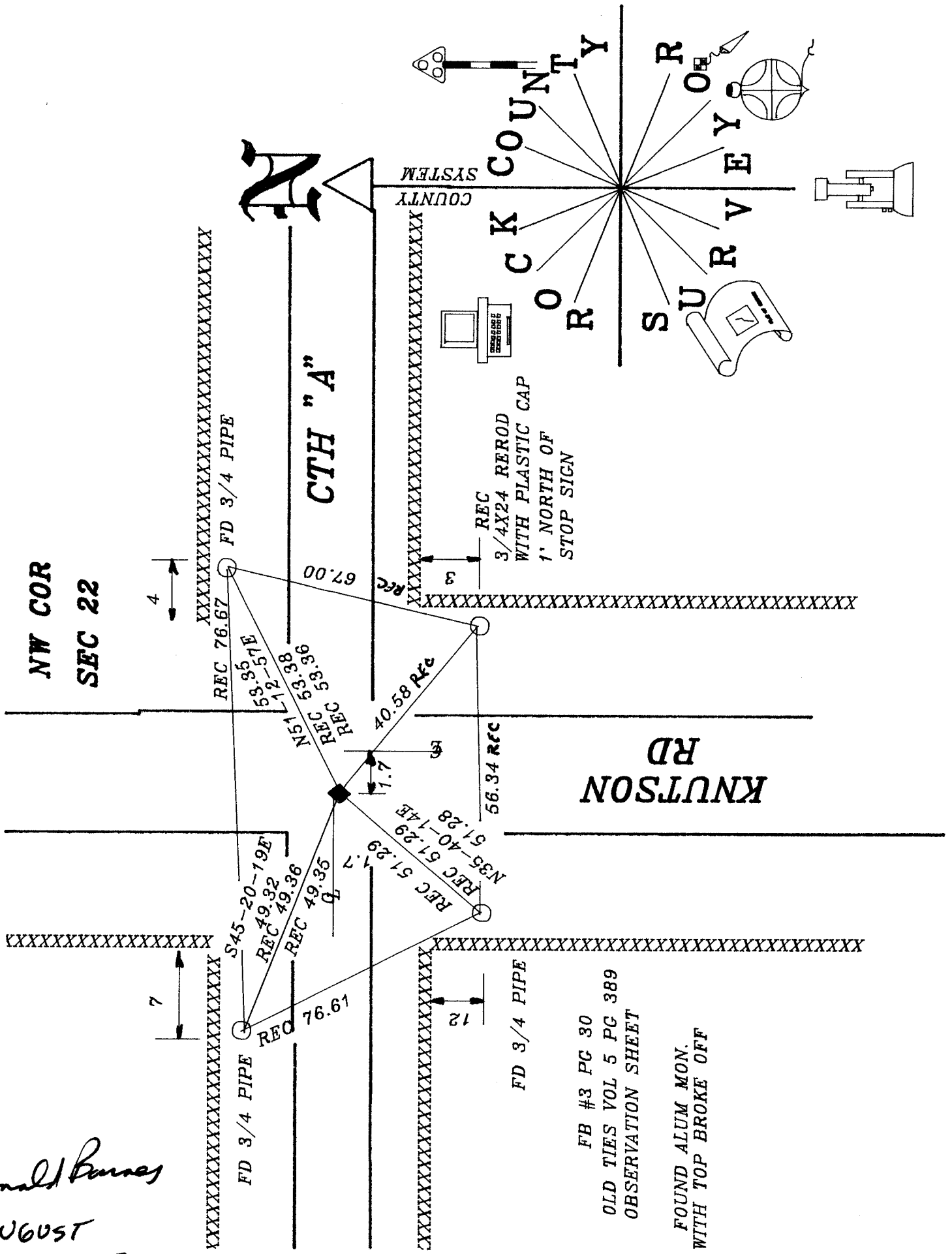
Number of included sheets 1

CORNER CODE

A-E 7.08 REQUIREMENT

N 13 (1)

Donald Bunnay
 AUGUST
 23, 1997



FB #3 PG 30
 OLD TIES VOL 5 PG 389
 OBSERVATION SHEET
 FOUND ALUM MON.
 WITH TOP BROKE OFF