

Paper weight-110# (minimum) Black nonfading ink required

U.S. PUBLIC LAND SURVEY MONUMENT RECORD

For Public Land Survey Corners In:
T. 3 N. R. 10 E. 4th P.M.
 CORNER CODE INDEX

WI ADMINISTRATIVE CODE A-E 7.08 REQUIREMENT
 REV 10/23/2004 USMONREC.DWG

A	1	2	3	4	5	6	7	8	9	10	11	12	13	14	15	16	17	18	19	20	21	22	23	24	25	A
B		6				5				4					3					2					1	B
C																										C
D																										D
E																										E
F																										F
G																										G
H																										H
J																										J
K																										K
L																										L
M																										M
N																										N
O																										O
P																										P
Q																										Q
R																										R
S																										S
T																										T
U																										U
V																										V
W																										W
X																										X
Y																										Y
Z																										Z

MAGNOLIA TWP
ROCK COUNTY WI

IF AVAILABLE
 ROCK COUNTY COORDINATES PREFERRED

North _____ Elev. _____

East _____

Hor. Datum _____ Vert. Datum _____

LATITUDE _____ ELLIPS. HT. _____

LONGITUDE _____

NAD83(91) _____ NETWORK ADJ. YR _____

GPS (X) _____ TRAVERSE (X) _____

BASED ON THE FOLLOWING CONTROL:

◆ CORNER MONUMENT ○ WITNESS MONUMENT

BEARINGS ARE BASED ON: ROCK COUNTY PROJECTION

FIELD BOOK _____ PAGE # _____
 OR OBSERVATION SHEET _____

SHEET 1 OF 3

SHOW A PLAN VIEW DRAWING DEPICTING THE CORNER MONUMENT AND SURROUNDING PHYSICAL FEATURES, INCLUDING THE EXCAVATION AREA AND DEPTH.

PLANNING & ZONING COMMITTEE ADOPTED THIS FORM ON 12/2/1982

CORNER CODE L-7(1)

MA4555 CENTERSEC17T3NR10E

(B) Describe any record evidence, monument evidence, occupational evidence, testimonial evidence or any other material evidence you considered, and whether the monument was found or placed.

- 1870 RUGER VOL 2 PG 28 SET IRREGULAR POINTED HH STONE
24X17X12 POINT UP VAR 6-55 2643.96 TO S 1/4 COR SEC
17, 2693.62 TO W 1/4 COR
- 1970 BATTERMAN VOL 4 PG 448 TIES BUT STATES NOTHING ABOUT
THE CORNER.
- 1985 BARNES VOL 6 PG 343 SET R/R SPIKE FROM TIES. S89-18-
21E 1354.51 TO SET R/R SPIKE FROM TIES @ S 1/16TH COR
OF NE 1/4 SEC 17, FROM 1/16TH COR S89-19-14E 1352.60
TO HH 34X16X22 @ E 1/4 COR SEC 17, N89-19-26W
2699.98 TO W 1/4 COR SEC 17.
- 1984 BARNES L-7 CORNER 2' NORTH OF PVMT CENTER & ON LINE
WITH N/S FENCE TO SOUTH. SET R/R SPIKEFROM FD
REFERENCE MONUMENTS.

FD R/R 0.2' DEEP & TIES:

C) Was the corner restored through acceptance of (1) an obliterated evidence location, or, (2) a found perpetuated location?

ACCEPTED FD R/R

D) Describe any material discrepancy between the location of the corner as restored or reestablished and the location of that corner as previously restored or reestablished by distance and direction. Show the discrepancy on the plan view drawing under (a), above. Show the distances between the corner as previously restored or reestablished and (1) the corner as restored or reestablished, and (2) to at least 4 of the witness monuments shown on the drawing in (a), above.

(E) Was the corner reestablished through lost corner proportionate methods? If so, show the method, including the directions and distances to other public land survey corners used as evidence or used for proportioning the corner location.

I, **Donald Barnes**, hereby certify that the corner location as identified by the corner code index was determined by me under my direction and control and that this U.S. Public Land Survey Monument Record is correct and complete to the best of my knowledge and belief.

Donald Barnes
Sep 20, 2012

SHEET 1 OF 3

CORNER CODE L-7(1)

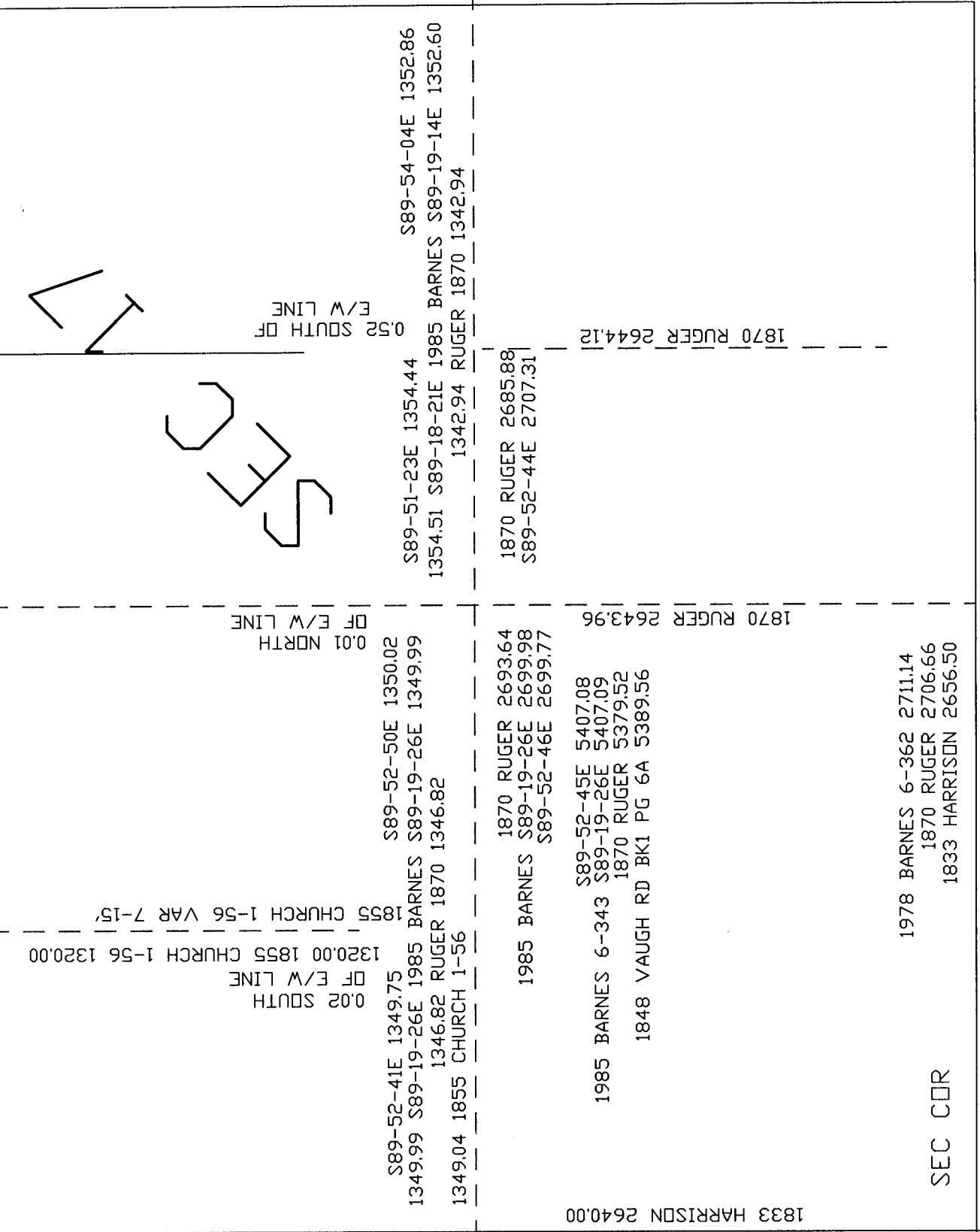
A.E. 7.08 REQUIREMENT

1833 HARRISON 2659.80
 1345.90 1978 BARNES 1345.90
 1346.25 S89-46-50E 1977 SHIMEAL
 1329.90 CHURCH 1855 1329.90
 1342.94 1870 RUGER 2-28 VAR 6-44 1342.94

1870 RUGER 2-28 VAR7-04 2697.42
 1348.71 1870 RUGER 2-28 VAR7-04 1348.71

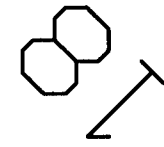
1833 HARRISON 2640.00
 1870 RUGER 2650.56
 1855 CHURCH 2652.21
 1870 RUGER 2657.17
 1985 BARNES N1-08-48E 2657.17
 N0-35-20E 2657.21
 1985 BARNES 6-343 N1-08-48E 5314.34
 1870 RUGER 2-28 VAR7-03 5304.42
 1855 CHURCH 1-55 5301.12
 1833 HARRISON 5280.00

*Errol Barnes
 Sep 20, 2012*



1833 HARRISON 2640.00
 1870 RUGER 2652.21
 1855 CHURCH 2657.17
 1985 BARNES N1-08-48E 2657.17
 N0-35-20E 2657.21
 1985 BARNES 6-343 N1-08-48E 5314.34
 1870 RUGER 2-28 VAR7-03 5304.42
 1855 CHURCH 1-55 5301.12
 1833 HARRISON 5280.00

1996 COMBS CSM 19-43 5293.70
 S89-48-38E 5293.83



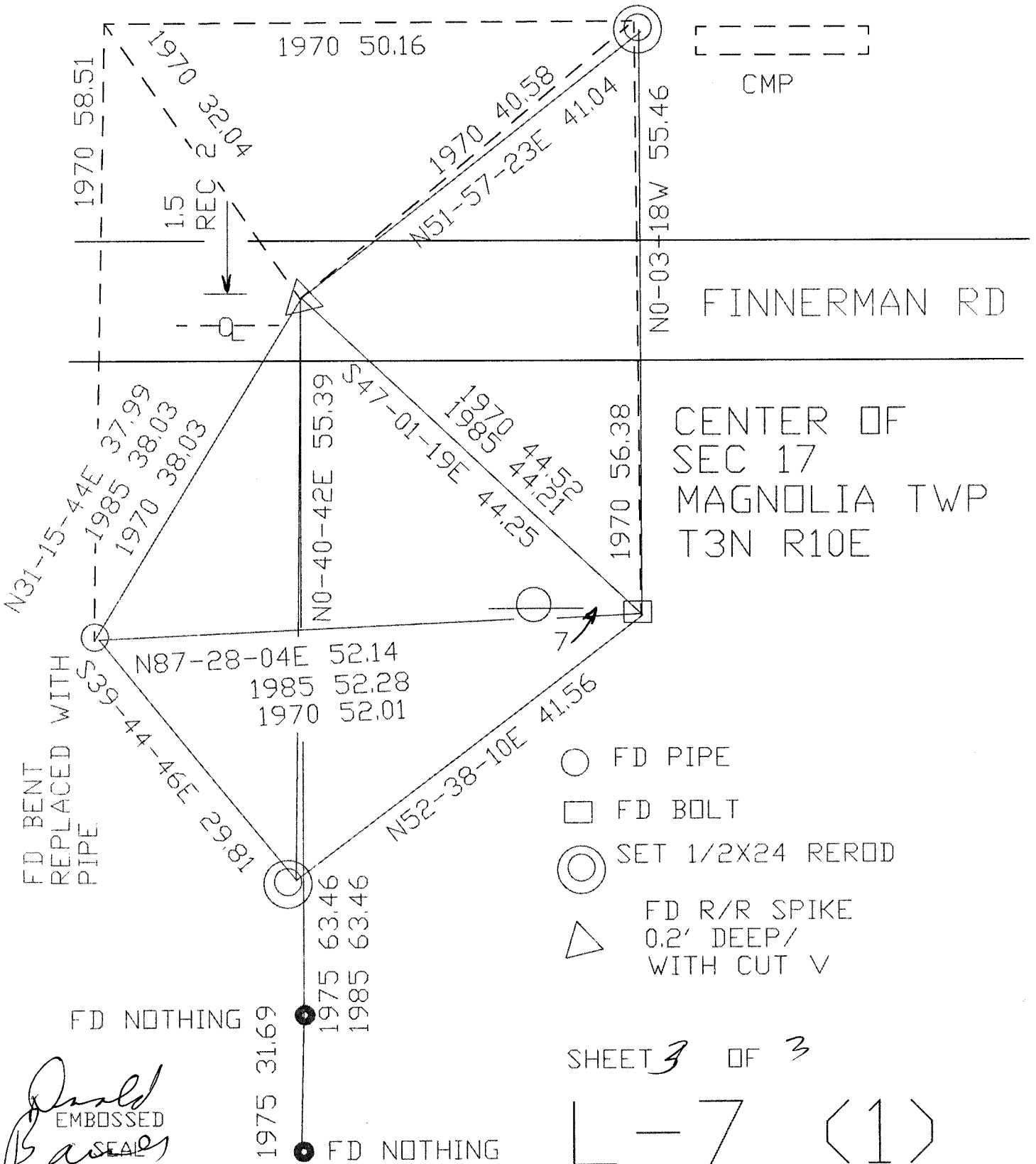
1833 HARRISON 2640.00
 1870 RUGER 2652.21
 1985 BARNES N1-08-48E 2657.17
 N0-36-12E 2657.13

*sheet 2 of 3
 L-7 (1)*

1349.12 1870 RUGER 1349.12

1355.57 BARNES 1978 1355.57

1975 SHROEDER VOL 4-448
 1970 BATTERMAN VOL 4-448
 1985 BARNES L-7 & BK 2 PG 20
 OBSERVATION SHEET 4555



Donald Barnes
 EMBOSSED SEAL
 Sep 20, 2012

SHEET 3 OF 3

L-7 (1)