

Paper weight-110# (minimum)

Black nonfading ink required

# U.S. PUBLIC LAND SURVEY MONUMENT RECORD

For Public Land Survey Corners In:

WI ADMINISTRATIVE CODE A-E 7.08 REQUIREMENT

T. 7 N. R. 10 E. 4th P.M.

REV 10/23/2004

USMONREC.DWG

CORNER CODE INDEX

MAGNOLIA TWP

ROCK COUNTY WI

IF AVAILABLE

ROCK COUNTY COORDINATES PREFERRED

A	1	2	3	4	5	6	7	8	9	10	11	12	13	14	15	16	17	18	19	20	21	22	23	24	25	A	
B		6				5				4					3					2						1	B
C																											C
D																											D
E																											E
F																											F
G																											G
H																											H
J																											J
K																											K
L																											L
M																											M
N																											N
O																											O
P																											P
Q																											Q
R																											R
S																											S
T																											T
U																											U
V																											V
W																											W
X																											X
Y																											Y
Z																											Z

North \_\_\_\_\_ Elev. \_\_\_\_\_

East \_\_\_\_\_

Hor. Datum \_\_\_\_\_ Vert. Datum \_\_\_\_\_

LATITUDE \_\_\_\_\_ ELLIPS. HT. \_\_\_\_\_

LONGITUDE \_\_\_\_\_

NAD83(91) \_\_\_\_\_ NETWORK ADJ. YR \_\_\_\_\_

GPS (X) \_\_\_\_\_ TRAVERSE (X) \_\_\_\_\_

BASED ON THE FOLLOWING CONTROL:

1 2 3 4 5 6 7 8 9 10 11 12 13 14 15 16 17 18 19 20 21 22 23 24 25  
PLACE MONUMENT SYMBOL  AT PROPER LOCATION ON ABOVE INDEX

CORNER MONUMENT

WITNESS MONUMENT

(a)

BEARINGS ARE BASED ON: ROCK COUNTY PROJECTION

FIELD BOOK \_\_\_\_\_ PAGE # \_\_\_\_\_  
OR OBSERVATION SHEET \_\_\_\_\_

SHEET 1 OF 4

SHOW A PLAN VIEW DRAWING DEPICTING THE CORNER MONUMENT AND SURROUNDING PHYSICAL FEATURES, INCLUDING THE EXCAVATION AREA AND DEPTH.

PLANNING & ZONING COMMITTEE ADOPTED THIS FORM ON 12/2/1982

CORNER CODE L-9(1)

MA556 E1/4CORSEC17T3NR10E

(B) Describe any record evidence, monument evidence, occupational evidence, testimonial evidence or any other material evidence you considered, and whether the monument was found or placed.

1833 HARRISON NOV NORTH BETWEEN SECS 16 & 17

2640.00 QUARTER SEC COR. {BURR O 18" S18E 25.08';  
BURR OAK 12" N15W 28.38' BURR O 18" &  
BURR OAK 12"} MARKED

4086.06 W.O. 20" IN DIAM

5280.00 COR TO SECS 8,9,16,17 WD 14" N40E 57.42';  
BURR OAK 12" S65E 93.06'; W.O. 24" S23W 141.9'

1848 VAUGH TWP RD BK 1 PG 6A COMMENCING IN THE CENTER OF THE HIGHWAY RUNNING FROM JANESVILLE TO MINERAL POINT AT THE SE CORNER OF SECTION 16 T3N R10E, AND RUN THENCE WEST ALONG SOUTH LINE OF SAID SEC 16 20 CHAINS & 28 LINKS (1338.48') TO THE SOUTH CORNER OF THE EAST HALF OF THE SE 1/4 OF SAID SECTION 16; THENCE N68W 37 CHAINS 67 LINKS (2486.22') TO A STAKE STANDING N30E 39 LINKS (25.74') FROM A DOUBLE BUR OAK TREE 20 INCHES THROUGH; THENCE N55W 26 CHAINS 32 LINKS (1737.12') TO THE CENTER OF A HIGHWAY RUNNING NORTHERLY TO OR NEAR NORTONS SAW MILL; THENCE N31W ALONG THE CENTER OF SAID HIGHWAY TO THE WEST LINE OF SAID SECTION 16 AND A CONTINUATION OF THE SAME FROM SAID SECTION LINE 5 CHAINS 81 LINKS (383.46') TO THE CENTER LINE RUNNING EAST AND WEST THROUGH THE CENTER OF SECTION 17, 2 CHAINS 98 LINKS (196.68') WEST OF THE QUARTER POST ON THE EAST LINE OF SAID SEC 17; THENCE WEST ALONG SAID CENTER LINE 78 CHAINS 68 LINKS (5192.88') TO THE QUARTER POST UPON THE SECTION LINE BETWEEN SECTIONS 17 & 18 THE LINE BEING THE CENTER OF THE HIGHWAY. VARIATION OF THE MAGNETIC NEEDLE 8 MINUTES EAST FROM THE TRUE MERIDIAN. SEP 7 1848 ALANSON B. VAUGH SURVEYOR. WE THE COMMISSIONERS OF HIGHWAYS TO THIS DAY LAY OUT AND ESTABLISH THE ABOVE SURVEY AS A PUBLIC HIGHWAY OF 66' IN WIDTH THE SAME BEING THE CENTER OF THE ROAD. SEP 7 1848.

1850 MILLER TWP RD REC BK 1 PG 9 & 10. IT WAS ORDERED THAT THE FOLLOWING ALTERATION BE MADE IN SAID RD TO WIT; COMMENCING AT A POINT S89 1/2W DISTANT 3 CHAINS (198') FROM 1/4 POINT ON THE EAST SIDE OF SEC 17 AND RUNNING THENCE FROM SAID 1/4 POINT ON THE EAST SIDE OF SECTION 17 AND RUNNING THENCE FROM SAID 1/4 POINT S30E 16 CHAINS 9 LINKS TO THE TERMINATION POINT A BUR OAK TREE 12 INCHES IN DIAMATER AND MAKE DO THE SW SIDE \_\_\_ N41 1/2E 59 LINKS (38.94') AND ANOTHER BUR OAK TREE 15 INCHES IN DIAMATER AND MARKED ON THE EAST SIDE N78 1/2W DISTANT 1 CHAIN AND FIFTY FIVE LINKS (102.3') \_\_\_ CAUSES AND DISTANCES ARE THE CENTER OF SAID HIGHWAY & THE WIDTH IS 66' VARIATION OF THE MAGNETIC NEEDLE IS 7-25 EAST AND THAT SO MUCH OF SAID JANESVILLE AND ALBANY RD AS NOW LAYS BETWEEN THE BEGINNING AND TERMINATION OF THE ABOVE MENTIONED SURVEYED LINE IS HEREBY TAKEN UP AND FOREVER DISCONTINUED. EZRA MILLER-SURVEYOR

1851 TWP RD REC BK 1 PG 14 COMMENCING AT A POINT S89-30W 198' FROM THE 1/4 POST ON THE EAST SIDE OF SEC 17 AND RUNNING THENCE FROM SAID 1/4 POST S30E 1061.94' TO

SHEET 1 OF 4

3041  
500000

*Ronald Francis*  
*Sep 20, 2012*

CORNER CODE L-9(1)

MA556 E1/4CORSEC17T3NR10E

THE TERMINATION POINT IN THE CENTER OF THE ROAD, AS IT NOW RUNS FROM JANESVILLE TO ALBANY; FROM SAID TERMINATION POINT A BURR OAK TREE 12 INCHES IN DIAMETER AND MARKED ON THE SOUTHWEST SIDE N41 1/2E 38.94' AND ANOTHER BURR OAK 15 INCHES IN DIAMETER AND MARKED ON THE EAST SIDE BEARS N78 1/4W 102.3' SAID COURSES AND DISTANCE ARE THE CENTER OF SAID HIGHWAY AND THE WIDTH IS 6' VARIATION OF THE MAGNETIC NEEDLE IS 7-15

- 1855 TWP RD REC BK 1 PG 17 COMMENCING AT THE FOOT OF THE HILL NEAR AMBROSE SPENCER'S HOUSE AND RUNNING TO THE QUARTER STAKE BETWEEN SECTIONS 16 AND 17 IN SAID TOWN & IT IS ALSO ORDERED AND "\*\*\*\*\*" A HIGHWAY BE LAID OUT IN SAID TOWN OF THE WIDTH OF 66'; COMMENCING AT THE FOOT OF THE HILL NEAR AMBROSE SPENCER'S HOUSE AND RUNNING NEARLY ON A STRAIT LINE ALONG THE SIDE HILL TO THE QUARTER STAKE BETWEEN SECTIONS 16 & 17. 18TH DAY JUNE 1855
- 1868 LOCKE #02759 FD STUMP OF N BT & REMAINS OF STUMP OF S BT & STONE SET ON COR (SMALL LIME) VAR 7-15 TO E 1/4 COR SEC 16.
- 1870 RUGER VOL 2 PG 28 FD REMAINS OF STUMP OF BEARING TREE & REMAINS OF OLD STAKE SET IRREGULAR POINTED HH STONE 34X16X12 POINT UP. USED TO SUBDIVIDE SEC 17
- 1870 RUGER VOL 2 PG 30 CORNER AS SET BY SELF INSURVEY OF SEC 17 SEE PAGE 21 VAR 6-28 1329.24 TO SET LIMESTONE 18X8X3 SURROUNDED IT WITH 4 LIMESTONES @ S 1/16TH COR OF NW 1/4 SEC 16, VAR 6-28 2658.48 TO CORNER AS SET BY LOCKE @ CENTER OF SEC 16, VAR 6-53 1325.36 TO SET HH 20X13X9 @ W 1/16TH COR OF NW 1/4 SEC 16, VAR 6-53 2650.72 TO CORNER AS SET BY SELF IN SURVEY OF SEC 17 SEE PAGE 28 @ NW COR SEC 16.
- 1984 BARNES L-9 FD 13X16X36 STONE, POINT UP. TOP 18" IS ABOVE THE GROUND. SET CARSONITE. STONE WAS SET BY RUGER-SEE VOL 2 PG 28. REFERENCED SAME. STONE IS JUST EAST OF PAVEMENT.
- 1985 BARNES VOL 6 PG 343 FD HH 34X16X12. NB9-19-14W 1352.60 TO SET R/R SPIKE FROM TIES, SB9-18-21E 1354.51 TO SET SPIKE FROM TIES @ CENTER OF SEC 17 FROM S 1/16TH COR OF NE 1/4 SEC 17, SB9-19-26E 1349.99 FROM CENTER OF SEC 17 TO ??? S 1//16TH COR SEC 17.

FD 13X16X36 STONE, POINT UP. TOP 18" IS ABOVE THE GROUND. FD CARSONITE NEXT TO STONE.

C) Was the corner restored through acceptance of (1) an obliterated evidence location, or, (2) a found perpetuated location?

ACCEPTED FD STONE

D) Describe any material discrepancy between the location of the corner as restored or reestablished and the location of that corner as previously restored or reestablished by distance and direction. Show the discrepancy on the plan view drawing under (a), above. Show the distances between the corner as previously restored or reestablished and (1) the corner as restored or reestablished, and (2) to at least 4 of the witness monuments shown on the drawing in (a), above.

(E) Was the corner reestablished through lost corner proportionate methods? If so, show the method, including the directions and distances to other public land survey corners used as evidence or used for proportioning the corner location.

I, Donald Barnes, hereby certify that the corner location as identified by the corner code index was determined by me under my direction and control and that this U.S. Public Land Survey Monument Record is correct and complete to the best of my knowledge and belief.

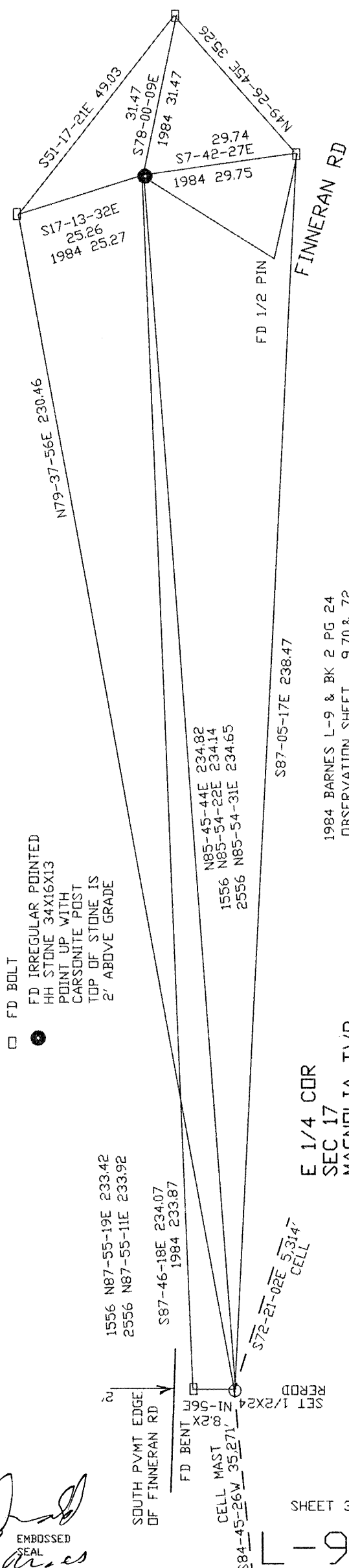
SHEET 2 OF 4

Donald Barnes  
Sep 20, 2012

CORNER CODE L-9(1)

A.E. 7.08 REQUIREMENT

*Barber*  
 EMBOSSED SEAL  
 Sep 20, 2012



□ FD BOLT  
 ● FD IRREGULAR POINTED  
 HH STONE 34X16X13  
 POINT UP WITH  
 CARSONITE POST  
 TOP OF STONE IS  
 2" ABOVE GRADE

1556 N87-55-19E 233.42  
 2556 N87-55-11E 233.92

S87-46-18E 234.07  
 1984 233.87

N85-45-44E 234.82  
 1556 N85-54-22E 234.14  
 2556 N85-54-31E 234.65

S87-05-17E 238.47

E 1/4 COR  
 SEC 17  
 MAGNOLIA TWP  
 T3N R10E

1984 BARNES L-9 & BK 2 PG 24  
 OBSERVATION SHEET 9,70,& 72

L-9(1)

*Andy Barnes  
Sep 20, 2012*

1833 HARRISON 5280.00  
1855 CHURCH 1-55 5301.12  
1870 RUGER 2-28 VAR7-03 5304.42  
1985 BARNES 6-343 NI-08-48E 5314.34  
NO-35-20E 2657.21  
1985 BARNES NI-08-48E 2657.17  
1870 RUGER 2652.21  
1855 CHURCH 2650.56  
1833 HARRISON 2640.00

S89-52-41E 1349.75  
1349.99 S89-19-26E 1985 BARNES 1320.00 1855 CHURCH 1-56 1320.00  
DF E/W LINE  
0.02 SOUTH  
1346.82 RUGER 1870 1346.82  
1349.04 1855 CHURCH 1-56

1895 CHURCH 1-56 VAR 7-15'  
S89-52-50E 1350.02  
1349.99 S89-19-26E 1349.99  
1346.82 RUGER 1870 1346.82

S89-51-23E 1354.44  
1354.51 S89-18-21E 1985 BARNES S89-19-14E 1352.60  
1342.94 RUGER 1870 1342.94

S89-54-04E 1352.86  
1342.94 RUGER 1870 1342.94

1996 COMBS CSM 19-43 5293.70  
S89-48-38E 5293.83

NO-36-12E 2657.13  
1985 BARNES NI-08-48E 2657.17  
1870 RUGER 2652.21  
1833 HARRISON 2640.00

1985 BARNES 6-343 S89-19-26E 5407.08  
1870 RUGER 5379.52  
1848 VAUGH RD BK1 PG 6A 5389.56

1870 RUGER 2643.96

1870 RUGER 2685.88  
S89-52-44E 2707.31  
1870 RUGER 2644.12

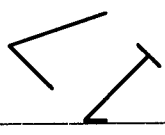
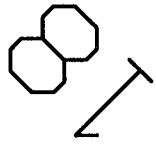
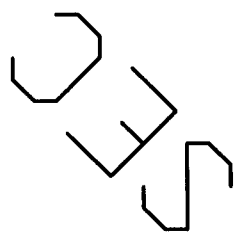
*sheet 4 of 4  
L9(1)*

1349.12 1870 RUGER 1349.12

1355.57 BARNES 1978 1355.57

SEC COR

1978 BARNES 6-362 2711.14  
1870 RUGER 2706.66  
1833 HARRISON 2656.50



0.01 NORTH  
DF E/W LINE

0.52 SOUTH OF  
E/W LINE